



BASEBALL

NIKE TEAM SPORTS 2015-16

CUSTOMIZE VAPOR PRO FB JERSEY >



CUSTOM

DIGITAL

STOCK

FOOTWEAR

ACCESSORIES

GEAR UP

CUSTOM BASEBALL



- FULLY CUSTOMIZABLE UNIFORMS WITH A COMPLETE RANGE OF EMBELLISHMENTS AND COLOR OPTIONS.
- BUILD TO SHIP IN 90 DAYS FROM ORDER DEADLINE.
- MADE WITH THE HIGHEST QUALITY FABRICATIONS AND THE LATEST NIKE DESIGNS AND TECHNOLOGIES.

LEADOFF FULL-BUTTON JERSEY

See below*

SIZES: S, M, L, XL, 2XL
*15% upcharge for 3XL, ST, MT, LT, XLT, 2XLT, 3XLT

OFFER DATE: 12/01/13
END DATE: 04/01/16

Full-button jersey with lightweight, Dri-FIT polyester warp knit body fabric for moisture-wicking durability. Mesh side and shoulder inset panels for increased breathability and less bulk at waist when tucked-in. Body width: 22", Body length: 32.5" (size large). Tall body length: +2.375" (all sizes). Tall sleeve length: +1.125" (all sizes).

FABRIC: 100% polyester.

| | | |
|--------|--|-----------|
| 578472 | Blank | \$65.00* |
| 269941 | One-Color Standard Twill Name/Number Split Front | \$115.00* |
| 269942 | Two-Color Standard Twill Name/Number Split Front | \$135.00* |
| 436077 | One-Color Lightweight Twill Split Front | \$125.00* |
| 436078 | Two-Color Lightweight Twill Split Front | \$145.00* |
| 269945 | Arm Cuff - Braid/Piping | \$10.00* |
| 269946 | Neck/Placket - Braid/Piping | \$30.00* |

DRI-FIT



Style 578478
CUSTOM LONGBALL PANT

LEADOFF FULL-BUTTON JERSEY PINSTRIPE

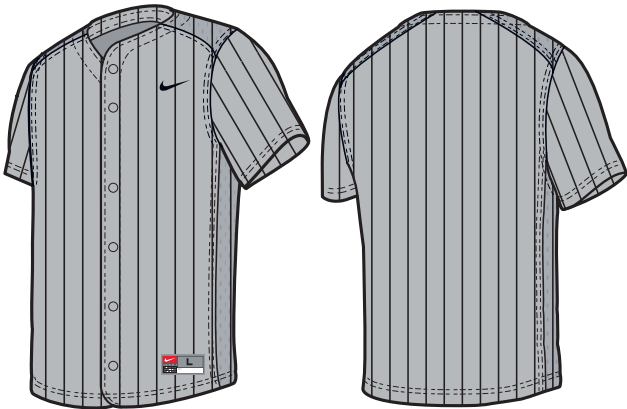
See below*

SIZES: S, M, L, XL, 2XL
*15% upcharge for 3XL, ST, MT, LT, XLT, 2XLT, 3XLT

Full-button jersey with lightweight polyester warp knit body fabric. Mesh side and shoulder insets for increased breathability and less bulk at waist when tucked in. Body width: 22", Body length: 32.5" (size large). Tall body length: +2.375" (all sizes). Tall sleeve length: +1.125" (all sizes).

FABRIC: 100% polyester.

| | | |
|--------|-------------------------------------|-----------|
| 677518 | Pinstripe | \$90.00* |
| 269941 | One-Color Standard Twill | \$140.00* |
| 269942 | Two-Color Standard Twill | \$160.00* |
| 436077 | One-Color Lightweight Stretch Twill | \$150.00* |
| 436078 | Two-Color Lightweight Stretch Twill | \$170.00* |
| 269945 | Arm Cuff - Braid/Piping | \$10.00* |
| 269946 | Neck/Placket - Braid/Piping | \$30.00* |



BP JERSEY II

See below*

SIZES: S, M, L, XL, 2XL

OFFER DATE: 12/01/13

*15% upcharge for 3XL, ST, MT, LT, XLT, 2XLT, 3XLT

END DATE: 04/01/16

Lightweight mesh two-button BP top with mesh at arm seams for breathability. Mock raglan sleeve construction for ease of movement. Body width: 22", Body length: 32.75" (size large). Tall body length: +2.375" (all sizes). Tall sleeve length: +1.125" (all sizes).

FABRIC: 100% polyester.

| | | |
|--------|------------------------------|-----------|
| 578550 | Blank | \$60.00* |
| 330089 | One-Color Standard Twill | \$90.00* |
| 330090 | Two-Color Standard Twill | \$100.00* |
| 409637 | One-Color Lightweight Twill | \$100.00* |
| 409638 | Two-Color Lightweight Twill | \$110.00* |
| 456047 | Sublimated Lightweight Twill | \$110.00* |

DRI-FIT



Style 578478
CUSTOM LONGBALL PANT

519552 | ELITE VAPOR PANT OPEN

\$80.00*

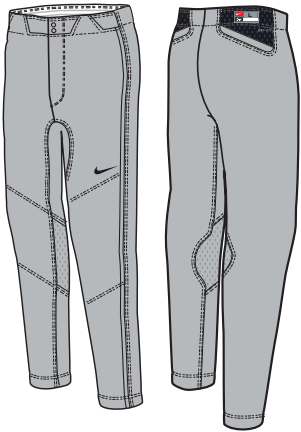
SIZES: S, M, L, XL, 2XL
*15% upcharge for 3XL, ST, MT, LT, XLT, 2XLT, 3XLT, STT, MTT, LTT, XLTT, 2XLTT, 3XLTT

OFFER DATE: 12/01/12
END DATE: 04/01/16

Dri-FIT polyester warp knit body fabric for durable breathability, with stretch fabric in gusset for mobility. Lined knees for durability. Articulated back pockets for accessibility. Side seams moved forward to aid in sliding. Hip width: 21.5", Inseam length: 31.75" (size large), with +2" or +4" inseam options.

FABRIC: 100% polyester.

DRI-FIT



519553 | ELITE VAPOR PANT UNHEMMED

\$80.00*

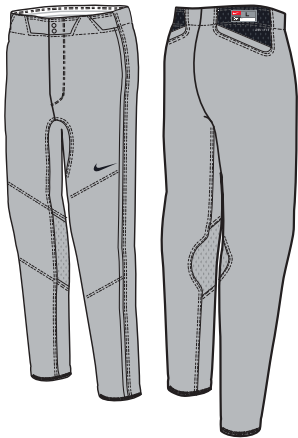
SIZES: S, M, L, XL, 2XL
*15% upcharge for 3XL, ST, MT, LT, XLT, 2XLT, 3XLT, STT, MTT, LTT, XLTT, 2XLTT, 3XLTT

OFFER DATE: 12/01/12
END DATE: 04/01/16

Dri-FIT polyester warp knit body fabric for durable breathability, with stretch fabric in gusset for mobility. Lined knees for durability. Articulated back pockets for accessibility. Side seams moved forward to aid in sliding. Hip width: 21.5" (size large), Inseam length: 37" (all sizes), with +2" or +4" inseam options.

FABRIC: 100% polyester.

DRI-FIT



519554 | ELITE VAPOR PANT HIGH

\$75.00*

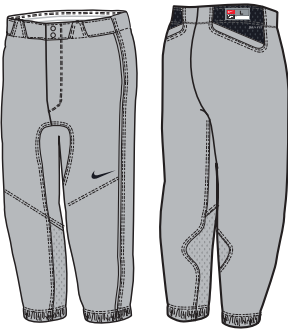
SIZES: S, M, L, XL, 2XL
*15% upcharge for 3XL, ST, MT, LT, XLT, 2XLT, 3XLT, STT, MTT, LTT, XLTT, 2XLTT, 3XLTT

OFFER DATE: 12/01/12
END DATE: 04/01/16

Dri-FIT polyester warp knit body fabric for durable breathability, with stretch fabric in gusset for mobility. Lined knees for durability. Articulated back pockets for accessibility. Side seams moved forward to aid in sliding. Hip width: 21.5", Inseam length: 16.25" (size large), with +2" or +4" inseam options.

FABRIC: 100% polyester.

DRI-FIT



CUSTOM LONGBALL PANT

See below*

SIZES: S, M, L, XL, 2XL,
*15% upcharge for 3XL, ST, MT, LT, XLT, 2XLT, 3XLT,
STT, MTT, LTT, XLTT, 2XLTT, 3XLTT

OFFER DATE: 12/01/13
END DATE: 04/01/16

Moisture-wicking Dri-FIT polyester warp knit baseball pant with reinforced knees for durability, brass zipper, two metal snap closures, two back welt pockets, and a pro-style seven belt loop system. Gripper silicone print on interior waistband for jersey lock-down with jacquard "NIKE BASEBALL" graphic repeat. Hip width: 22", Inseam length: 31.75" (size large), with +2" or +4" inseam options.

FABRIC: 100% polyester.

| | | |
|--------|--------------|----------|
| 578478 | Blank | \$70.00* |
| 269947 | Braid/Piping | \$14.00* |

DRI-FIT



CUSTOM LONGBALL PANT CONVENTIONAL

See below*

SIZES: S, M, L, XL, 2XL,
*15% upcharge for 3XL, ST, MT, LT, XLT, 2XLT, 3XLT,
STT, MTT, LTT, XLTT, 2XLTT, 3XLTT

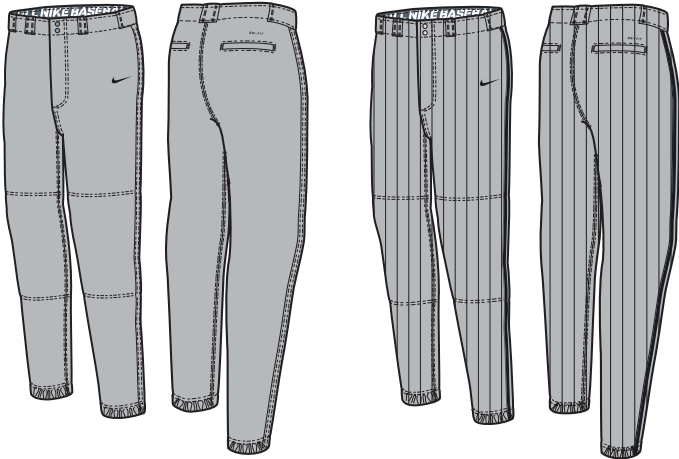
OFFER DATE: 10/01/14
END DATE: 04/01/16

Moisture-wicking Dri-FIT polyester warp knit baseball pant with reinforced knees for durability, brass zipper, two metal snap closures, two back welt pockets, and a pro-style seven belt loop system. Gripper silicone print on interior waistband for jersey lock-down with jacquard Nike baseball graphic repeat. Hip width: 22", Inseam length: 34.5" (size large), with +2" or +4" inseam options, +6", +8" or +10" inseam options (+6" length).

FABRIC: 100% polyester.

| | | |
|--------|--|-----------|
| 638302 | Blank Regular Length | \$75.00* |
| 677502 | Blank +6" Length | \$90.00* |
| 677519 | Pinstripe Regular Length (not Dri-FIT) | \$100.00* |
| 677521 | Pinstripe +6" Length (not Dri-FIT) | \$115.00* |
| 269947 | Braid Piping | \$14.00* |

DRI-FIT



CUSTOM LONGBALL PANT TAPERED

See below*

SIZES: S, M, L, XL, 2XL,
*15% upcharge for 3XL, ST, MT, LT, XLT, 2XLT, 3XLT,
STT, MTT, LTT, XLTT, 2XLTT, 3XLTT

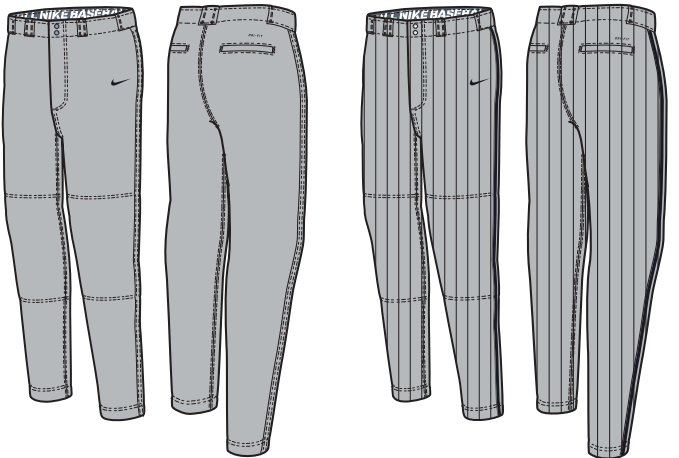
OFFER DATE: 10/01/14
END DATE: 04/01/16

Moisture-wicking Dri-FIT polyester warp knit baseball pant with reinforced knees for durability, brass zipper, two metal snap closures, two back welt pockets, and a pro-style seven belt loop system. Gripper silicone print on interior waistband for jersey lock-down with jacquard Nike Baseball graphic repeat. Hip width: 22", Inseam length: 28.75" (size large), with +2" or +4" inseam options, +6", +8" or +10" inseam options (+6" length).

FABRIC: 100% polyester.

| | | |
|--------|--|-----------|
| 677500 | Blank Regular Length | \$70.00* |
| 693192 | Blank +6" Length | \$85.00* |
| 677520 | Pinstripe Regular Length (not Dri-FIT) | \$95.00* |
| 693191 | Pinstripe +6" Length (not Dri-FIT) | \$110.00* |
| 269947 | Braid Piping | \$14.00* |

DRI-FIT



DIGITAL BASEBALL



VAPOR 1.0 2-BUTTON



PAGE 12

VAPOR GAME TOP



PAGE 13

ELITE VAPOR SL



PAGE 14

- FULLY SUBLIMATED UNIFORMS WITH A FULL RANGE OF COLOR AND CUSTOMIZATION OPTIONS.
- BUILD TO SHIP IN 60 DAYS FROM ORDER DEADLINE.
- MADE WITH THE HIGHEST QUALITY FABRICATIONS AND THE LATEST NIKE DESIGNS AND TECHNOLOGIES.
- DQT STYLES AVAILABLE 365 DAYS A YEAR IN 40-45 DAYS FROM ORDER TO DELIVERY.

DIGITAL BASEBALL



VAPOR PRO FULL-BUTTON



PAGE 15

VAPOR PRO 2-BUTTON



PAGE 16

THROWBACK



PAGE 17

- FULLY SUBLIMATED UNIFORMS WITH A FULL RANGE OF COLOR AND CUSTOMIZATION OPTIONS.
- BUILD TO SHIP IN 60 DAYS FROM ORDER DEADLINE.
- MADE WITH THE HIGHEST QUALITY FABRICATIONS AND THE LATEST NIKE DESIGNS AND TECHNOLOGIES.
- DQT STYLES AVAILABLE 365 DAYS A YEAR IN 40-45 DAYS FROM ORDER TO DELIVERY.

632233 | DQT VAPOR 1.0 2-BUTTON JERSEY

\$115.00*

SIZES: XS, S, M, L, XL, 2XL

OFFER DATE: 10/01/14

*15% upcharge for 3XL, 4XL, LT, XLT, 2XLT, 3XLT, 4XLT

END DATE: 10/01/17

Sublimated lightweight 2-button pull over jersey. Mesh underarm and back for superior breathability. Body width: 22", Body length: 32.5" (size large). Tall body length: +2.375" (all sizes). Tall sleeve length: +1.125" (all sizes).

FABRIC: Body: 80% polyester/20% spandex. Mesh: 100% polyester.



Style 519552
VAPOR PANT

708187 DQT VAPOR GAME TOP

\$90.00

SIZES: XS, S, M, L, XL, 2XL
*15% upcharge for 3XL, ST, MT, LT, XLT, 2XLT, 3XLT

OFFER DATE: 01/01/16

END DATE: 01/01/19

Lightweight sublimated baseball top with rib knit v-neck collar. Body width: 22.75", Body length: 31.5" (size large).

FABRIC: Body: 100% polyester.

NEW DRI-FIT



519551 ELITE VAPOR SUBLIMATED JERSEY

\$90.00*

SIZES: S, M, L, XL, 2XL

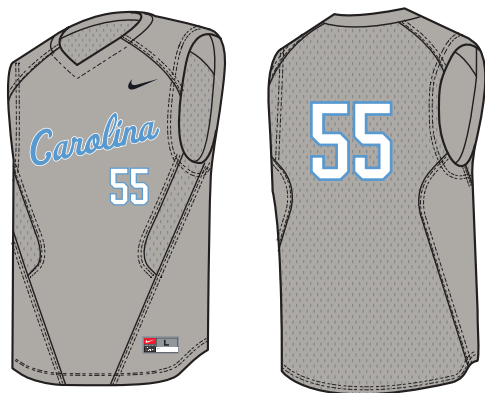
OFFER DATE: 12/01/12

*15% upcharge for 3XL, ST, MT, LT, XLT, 2XLT, 3XLT

END DATE: 04/01/16

Lighter is better. Jersey vest has minimal bulk with no placket or sleeves. Mesh fabric on back and under arms for breathability with stretch woven fabric on chest for durability. Fully sublimated. Nike Team Sports jock tag on lower left hem. Body width: 22", Body length: 32.5" (size large). Tall body length: +2.375" (all sizes).

FABRIC: Body: 80% polyester/20% spandex. Mesh: 100% polyester.



VAPOR PRO FULL-BUTTON JERSEY

VENTILATED GAME-DAY COMFORT.

THE VAPOR PRO JERSEY HELPS KEEP YOU COOL AND COMFORTABLE WITH A MESH BACK PANEL AND A TAILORED FIT.

**VAPOR PRO FULL-BUTTON
JERSEY - 708192**
PAGE 15

FORWARD MOTION SEAMS
ALLOW YOU TO MOVE NATURALLY.

MESH BACK PANEL
ENHANCES AIRFLOW AND REDUCES WEIGHT.

ZONAL SUBLIMATION
ALLOWS FOR MULTIPLE LOOKS.



708192

VAPOR PRO FULL-BUTTON JERSEY

\$110.00

SIZES: XS, S, M, L, XL, 2XL

OFFER DATE: 01/01/16

*15% upcharge for 3XL, ST, MT, LT, XLT, 2XLT, 3XLT

END DATE: 01/01/19

Lightweight sublimated full-button baseball jersey. Mesh fabric at back and underarm for added breathability. Body width: 22", Body length: 31.5" (size large).

FABRIC: 100% polyester.

NEW



708191 VAPOR PRO 2-BUTTON JERSEY

\$100.00

SIZES: XS, S, M, L, XL, 2XL

OFFER DATE: 01/01/16

*15% upcharge for 3XL, ST, MT, LT, XLT, 2XLT, 3XLT

END DATE: 01/01/19

Lightweight sublimated two-button baseball jersey. Mesh fabric at back and underarm for added breathability. Body width: 22", Body length: 31.5" (size large).

FABRIC: 100% polyester.

NEW



632234

THROWBACK JERSEY 1.5

\$80.00*

SIZES: S, M, L, XL, 2XL
*15% upcharge for 3XL, ST, MT, LT, XLT, 2XLT, 3XLT

Sublimated v-neck pull-over baseball jersey. Throwback look with current performance fabrics.
Body width: 24", Body length: 31.5" (size large). Tall body length: +2.375" (all sizes). Tall sleeve length: +1.125" (all sizes).

FABRIC: 100% polyester.

OFFER DATE: 10/01/14
END DATE: 04/01/17

DRI-FIT



Style 677500
CUSTOM LONGBALL PANT TAPERED

STOCK BASEBALL



- UNIFORMS SOLD BLANK IN A RANGE OF COLOR OPTIONS.
- STOCK EMBELLISHMENT PROGRAM AVAILABLE FOR QUICK TURNAROUND OF DECORATED JERSEYS.
- MADE WITH THE HIGHEST QUALITY FABRICATIONS AND THE LATEST NIKE DESIGNS AND TECHNOLOGIES.

519558

FULL-BUTTON VAPOR JERSEY

\$45.00

SIZES: XS, S, M, L, XL, 2XL, 3XL

OFFER DATE: 10/01/12
END DATE: 10/01/16

Double-knit full-button jersey with optimized tapered fit. Nike Team Sports jock tag at lower left hem and Swoosh design trademark at upper left chest. Body width: 22", Body length: 32.5" (size large).

Part of Stock Embellishment Program.

FABRIC: 100% polyester.

| | | | | | |
|-----|---------------|-----|--------------------|-----|--------------------------------|
| 010 | Black/(White) | 052 | Blue Grey/(Black) | 060 | Anthracite/(White) (not shown) |
| 100 | White/(Black) | 341 | Dark Green/(White) | 419 | Navy/(White) |
| 493 | Royal/(White) | 610 | Cardinal/(White) | 657 | Scarlet/(White) |

Youth #632188 / S-XL / \$40.00 / Body width: 18", Body length: 24" (size medium)



578552 | BP JERSEY II

\$40.00

SIZES: S, M, L, XL, 2XL, 3XL

OFFER DATE: 12/01/13
END DATE: 10/01/16

Lightweight mesh two-button BP top with mesh at arm seams for breathability. Mock raglan sleeve construction for ease of movement. Body width: 22", Body length: 32.75" (size large).

Part of Stock Embellishment Program.

FABRIC: 100% polyester.

| | | |
|---|---------------------------------|--|
| 010 Black/Black/(White) | 052 Blue Grey/Blue Grey/(Black) | 053 Blue Grey/Scarlet/(Scarlet) |
| 056 Blue Grey/Navy/(Navy) | 058 Blue Grey/Black/(Black) | 100 White/White/(Black) |
| 348 Dark Green/Blue Grey/(White) | 419 Navy/Navy/(White) | 430 Navy/Blue Grey/(White) |
| 442 Royal/Blue Grey/(White) | 493 Royal/Royal/(White) | 544 Purple/Blue Grey/(White) (not shown) |
| 616 Cardinal/Blue Grey/(White) | 631 Scarlet/Blue Grey/(White) | 657 Scarlet/Scarlet/(White) |
| 668 Dark Maroon/Blue Grey/(White) (not shown) | | |

Youth #578553-010, 052, 100, 419, 430, 442, 493, 544, 631, 657, 668 / S-XL / \$35.00 / Body width: 18", Body length: 24" (size medium)

DRI-FIT 



708189

STOCK VAPOR DRI-FIT GAME TOP

\$38.00

SIZES: S, M, L, XL, 2XL, 3XL

OFFER DATE: 10/01/15

END DATE: 10/01/18

Lightweight performance baseball top with rib knit v-neck collar. Body width: 22.75", Body length: 31.5" (size large).

Part of Stock Embellishment Program.
Part of Response Program.

FABRIC: 100% polyester.

| | | |
|---|---------------------------------|-------------------------------|
| 025 Black/Blue Grey/(White) | 052 Blue Grey/Blue Grey/(Black) | 118 White/Blue Grey/(Black) |
| 348 Dark Green/Blue Grey/(White) | 430 Navy/Blue Grey/(White) | 442 Royal/Blue Grey/(White) |
| 544 Purple/Blue Grey/(White) (not shown) | 616 Cardinal/Blue Grey/(White) | 631 Scarlet/Blue Grey/(White) |
| 668 Dark Maroon/Blue Grey/(White) (not shown) | | |

Youth #708213 / S-XL / \$30.00 / Body width: 17.5", Body length: 23.5" (size medium)

NEW DRI-FIT Y



636808

VAPOR 1.0 PANT UNHEMMED

\$60.00

SIZES: S, M, L, XL, 2XL

OFFER DATE: 10/01/14
END DATE: 04/01/16

Dri-FIT baseball pant with reinforced knees and back thigh for durability, brass zipper, back pockets, and two metal snap closures. Gripper elastic waistband and a relaxed leg fit. Side seams moved forward to minimize effect on sliding. Embroidered Swoosh design trademark. Hip width: 21.25" (size large), Inseam length: 37" (all sizes).

FABRIC: 100% polyester.

| | | |
|----------------------------------|----------------------------------|-----------------------------|
| 042 Blue Grey/Anthracite/(Black) | 053 Blue Grey/Scarlet/(Black) | 055 Blue Grey/Royal/(Black) |
| 056 Blue Grey/Navy/(Black) | 079 Anthracite/Blue Grey/(Black) | 108 White/Royal/(Black) |
| 109 White/Scarlet/(Black) | 118 White/Blue Grey/(Black) | |

DRI-FIT



578535

NIKE LONGBALL PANT PIPED

\$45.00

SIZES: S, M, L, XL, 2XL, 3XL

OFFER DATE: 12/01/13
END DATE: 10/01/16

Moisture-wicking Dri-FIT polyester warp knit baseball pant with reinforced knees for durability, brass zipper, two metal snap closures, two back welt pockets, and a pro-style seven belt loop system. Gripper silicone print on interior waistband for jersey lock-down with jacquard "NIKE BASEBALL" graphic repeat. Hip width: 22", Inseam length: 31.75" (size large).

FABRIC: 100% polyester.

| | | |
|---------------------------------|-----------------------------|---------------------------|
| 053 Blue Grey/Scarlet/(Scarlet) | 055 Blue Grey/Royal/(Royal) | 056 Blue Grey/Navy/(Navy) |
| 058 Blue Grey/Black/(Black) | 106 White/Black/(Black) | 107 White/Navy/(Navy) |
| 108 White/Royal/(Royal) | 109 White/Scarlet/(Scarlet) | |

Youth #578539 / XS-XL / \$40.00 / Hip width: 15.75", Inseam length: 25.75" (size medium)

DRI-FIT 



578534

NIKE LONGBALL PANT

\$40.00

SIZES: S, M, L, XL, 2XL, 3XL

OFFER DATE: 12/01/13
END DATE: 10/01/16

Moisture-wicking Dri-FIT polyester warp knit baseball pant with reinforced knees for durability, brass zipper, two metal snap closures, two back welt pockets, and a pro-style seven belt loop system. Gripper silicone print on interior waistband for jersey lock-down with jacquard "NIKE BASEBALL" graphic repeat. Hip width: 22", Inseam length: 31.75" (size large).

FABRIC: 100% polyester.

| | |
|-----------------------|-------------------|
| 052 Blue Grey/(Black) | 100 White/(Black) |
|-----------------------|-------------------|

Youth #578538 / XS-XL / \$35.00 / Hip width: 15.75", Inseam length: 25.75" (size medium)

DRI-FIT 



62183

VAPOR PLAYERS TOP

\$110.00

SIZES: XS, S, M, L, XL, 2XL

OFFER DATE: 10/01/14
END DATE: 04/01/16

The BSBL Vapor Players Top 1.5 is designed for the baseball player. It has a fitted body and compression sleeves with warmth and support for the bicep, elbow, and throwing muscles while keeping cool with mesh on the forearm using engineered mesh and thermal zoning. The body is seamless for zero distractions. Nike bsbl repeat neck tape. Body width: 19.75", Body length: 28.25" (size large).

FABRIC:

| | | | | | |
|-----|-----------------|-----|--------------|-----|---------------|
| 010 | Black/(White) | 419 | Navy/(White) | 480 | Royal/(White) |
| 657 | Gym Red/(White) | | | | |

DRI-FIT



634674

NPC VAPOR SLIDER TIGHT

\$100.00

SIZES: XS, S, M, L, XL, 2XL

OFFER DATE: 10/01/14
END DATE: 04/01/16

The ultimate in baseball baselayer. Stretch-woven fabric in sliding zones at thigh, outside shin, & above knee.Linen-textured laminate at thigh for extra friction resistance and durability. Mesh fabric body for maximum ventilation behind the knee and at front & back rise. 2 waistband and cup pocket with woven/laminated overlay for comfort and lock-down fit. Detech foam at knee for impact resistance w/routed grooves for flexibility. NIKE Baseball B logo, Swoosh design trademark, VAPOR, and MLB Authentic Collection batterman logo in heat transfers. Hip width: 18.5", Inseam length: 21.25" (size large).

FABRIC: Body: 77% polyester/23% spandex. Pad Overlay: 100% polyester.

060

Anthracite/White/Volt/(Anthracite)

DRI-FIT



634677

NPC VAPOR SPEED SLIDER 1.5

\$70.00

SIZES: XS, S, M, L, XL, 2XL

OFFER DATE: 10/01/14
END DATE: 04/01/16

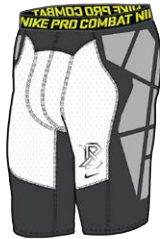
The BSBL Vapor Speed Slider 1.5 is the ultimate in baseball baselayer, with stretch-woven fabric strategically placed in sliding zones at thigh and above knee, using linen-textured laminate at thigh for extra friction resistance and durability. Mesh fabric body for maximum ventilation where possible, including at front and back rise. 2 wide waistband and cup pocket with woven overlay for comfort and lock-down fit. NIKE Baseball B logo, Swoosh design trademark, VAPOR, and MLB Authentic Collection Batterman logo in heat transfers. Hip width: 18.5", Inseam length: 12.25" (size large).

FABRIC: Body: 89% polyester/11% spandex. Inner Leg: 77% polyester/23% spandex.

060

Anthracite/White/Volt/(Anthracite)

DRI-FIT



637867

HEIST SLIDER 1.4

\$35.00

SIZES: XS, S, M, L, XL, 2XL

OFFER DATE: 10/01/14
END DATE: 04/01/17

The Heist Slider has been updated with increased pad coverage at thigh/hip, sew-lines tie to Hyperstrong design lines for visual tie to top end slider tight. Gusset, inner leg material updated to NPC compression short material that is cool to the touch. 2 Nike Pro Combat waistband for comfort. Hip width: 17", Inseam length: 11.25" (size large).

FABRIC: Body: 100% polyester. Gusset: 92% polyester/8% spandex.

100

White/Anthracite/Volt/(Volt)

DRI-FIT



704893

HYPERWARM DRI-FIT MAX MOCK

\$55.00

SIZES: S, M, L, XL, 2XL, 3XL

OFFER DATE: 07/01/15
END DATE: 07/01/17

Dri-FIT max fabric. Right weight warmth. Flatlock seams to reduce irritation from chafing. Zoned thermal ventilation for thermoregulation. New striated fusion twill fabric for increased surface interest, thermal mesh back panel for thermoregulation highlighted with outlined pod graphic. For outdoor gameday or training. Fusion twill fabric provides warm hand feel. "Compression" fit for locked in feel and increased proprioception. Body width: 17.5", Body length: 29" (size large).

FABRIC: 88% polyester/12% spandex.

| | | |
|--------------------------------|------------------------------|-------------------------------|
| 010 Black/(Medium Grey) | 064 Flint Grey/(Medium Grey) | 100 White/(Medium Grey) |
| 419 College Navy/(Medium Grey) | 480 Game Royal/(Medium Grey) | 648 Varsity Red/(Medium Grey) |

DRI-FIT



704892

HYPERWARM DRI-FIT MAX TIGHT

\$55.00

SIZES: S, M, L, XL, 2XL, 3XL

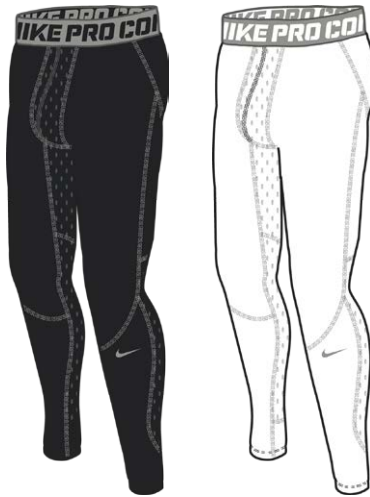
OFFER DATE: 07/01/15
END DATE: 07/01/17

Right weight warmth. Flatlock seams to reduce irritation from chafing. Zoned thermal ventilation for thermoregulation. Dri-FIT max for ultimate moisture management for gameday and training. New striated fusion twill fabric for increased surface interest, thermal mesh lower leg back panel for thermoregulation. For indoor/outdoor gameday or training. Fusion twill fabric provides warm hand feel. "Compression" fit for locked in feel and increased proprioception. Hip width: 15.75", Inseam length: 27" (size large).

FABRIC: 88% polyester/12% spandex.

| | |
|-------------------------|-------------------------|
| 010 Black/(Medium Grey) | 100 White/(Medium Grey) |
|-------------------------|-------------------------|

DRI-FIT



651292

NPC HYPERCOOL 3.0 FITTED 3/4 SLEEVE

\$55.00

SIZES: S, M, L, XL, 2XL, 3XL

OFFER DATE: 01/01/15
END DATE: 01/01/18

Warp-knit fabric produces combat-strength mesh structures which reduce potential tearing and ripping. Sublimated pod means zero bonding. True mesh holes provide superior ventilation. Lightweight Dri-FIT Max fabric gives off a cool hand feel. Baseball specific version uses a fitted body, sleeves, and Swoosh on the neck, just like they have in the pros. Body width: 21", Body length: 29.5" (size large).

FABRIC: 92% polyester/8% spandex.

| | | |
|-------------------|----------------------------|------------------|
| 010 Black/(White) | 100 White/(Black) | 419 Navy/(White) |
| 460 Royal/(White) | 657 University Red/(White) | |

DRI-FIT



654406

HYPERCOOL FITTED SS NTS

\$50.00

SIZES: S, M, L, XL, 2XL, 3XL

OFFER DATE: 01/01/15
END DATE: 01/01/17

Dri-FIT max for ultimate moisture management for gameday. New warp knit jacquard back panel (5x more breathable), new embossed jersey fabric (25% lighter), Dri-FIT max fabric (wicks 50% more sweat). Body width: 21", Body length: 29.5" (size large).

FABRIC: 92% polyester/8% spandex.

| | | | | | |
|-----|------------------------------------|-----|----------------------------------|-----|--------------------------------------|
| 010 | Black/Cool Grey/(Cool Grey) | 100 | White/Cool Grey/(Cool Grey) | 341 | Gorge Green/Cool Grey/(Cool Grey) |
| 419 | College Navy/Cool Grey/(Cool Grey) | 480 | Game Royal/Cool Grey/(Cool Grey) | 657 | University Red/Cool Grey/(Cool Grey) |

DRI-FIT



677933

HYPERCOOL COMP 6" SHORT NTS

\$45.00

SIZES: S, M, L, XL, 2XL, 3XL

OFFER DATE: 01/01/15
END DATE: 01/01/17

Dri-FIT max for ultimate moisture management for gameday. New warp knit jacquard side panel (5x more breathable), new embossed jersey fabric (25% lighter), Dri-FIT max fabric (wicks 50% more sweat), plated jersey fabric is lightweightand breathable with a cool hand touch. Compression fit for locked in feel and increased proprioception. Hip width: 16", Inseam length: 8.25" (size large).

FABRIC: 100% polyester.

| | | | |
|-----|-----------------------------|-----|-----------------------------|
| 010 | Black/Cool Grey/(Cool Grey) | 100 | White/Cool Grey/(Cool Grey) |
|-----|-----------------------------|-----|-----------------------------|

DRI-FIT



728052 NIKE PRO COOL FITTED L/S \$35.00

SIZES: S, M, L, XL, 2XL, 3XL **OFFER DATE:** 10/01/15
END DATE: 10/01/17

Key technology: Dri-FIT fabric, key features: Lightweight & breathable, flatlock seams to reduce irritation from chafing. New zoned ventilation for thermoregulation. Shaped, low-rise collar, what's new and improved: vented side hem with drop tail for enhanced tuck in performance. Zoned thermoregulation with back panel mesh, who is this for/type of workout: indoor/outdoor gameday or training, fit and feel: Lightweight four-way stretch jersey provides mobility. Mesh back panel provides zoned thermoregulation. "fitted" fit for body skimming performance. Body width: 21", Body length: 30" (size large).

FABRIC: 100% polyester.

| | | |
|--------------------------|------------------------|----------------------------|
| 010 Black/(White) | 100 White/(Flint Grey) | 341 Gorge Green/(White) |
| 419 College Navy/(White) | 493 Game Royal/(White) | 657 University Red/(White) |

NEW DRI-FIT



728066 NIKE PRO COOL FITTED S/S \$30.00

SIZES: S, M, L, XL, 2XL, 3XL **OFFER DATE:** 10/01/15
END DATE: 10/01/17

Key technology: Dri-FIT fabric, key features: Lightweight & breathable, flatlock seams to reduce irritation from chafing. New zoned ventilation for thermoregulation. Shaped, low-rise collar, what's new and improved: vented side hem with drop tail for enhanced tuck in performance. Zoned thermoregulation with back panel mesh, who is this for/type of workout: indoor/outdoor gameday or training, fit and feel: Lightweight four-way stretch jersey provides mobility. Mesh back panel provides zoned thermoregulation. "fitted" fit for body skimming performance. Body width: 21", Body length: 30" (size large).

FABRIC: 100% polyester.

| | | |
|--------------------------|------------------------|----------------------------|
| 010 Black/(White) | 100 White/(Flint Grey) | 341 Gorge Green/(White) |
| 419 College Navy/(White) | 493 Game Royal/(White) | 657 University Red/(White) |

NEW DRI-FIT



728047 NIKE PRO COOL COMPRESSION L/S \$35.00

SIZES: S, M, L, XL, 2XL, 3XL **OFFER DATE:** 07/01/15
END DATE: 01/01/17

Key features: Lightweight & breathable, flatlock seams to reduce irritation from chafing. New zoned ventilation for thermoregulation. What's new and improved: raglan sleeve construction for increased mobility, vented side hem with drop tail. Zoned thermoregulation with back panel mesh. Branded verbiage inside droptail to communicate compression fit, consumer/workout: indoor/outdoor gameday or training, fit/feel: Lightweight four-way stretch jersey provides mobility. Mesh back panel provides zoned thermoregulation. "Compression" fit for locked in feel and increased proprioception. Body width: 17.5", Body length: 28.75" (size large).

FABRIC: 100% polyester.

| | | |
|------------------------------|------------------------------|--------------------------------|
| 010 Black/(Cool Grey) | 022 Carbon Heather/(Black) | 100 White/(Cool Grey) |
| 341 Gorge Green/(Cool Grey) | 419 College Navy/(Cool Grey) | 494 Game Royal/(Cool Grey) |
| 545 Court Purple/(Cool Grey) | 610 Team Maroon/(Cool Grey) | 658 University Red/(Cool Grey) |
| 669 Deep Maroon/(Cool Grey) | | |

NEW DRI-FIT



728048 NIKE PRO COOL COMPRESSION S/S \$30.00

SIZES: S, M, L, XL, 2XL, 3XL **OFFER DATE:** 10/01/15
END DATE: 10/01/17

Key features: Lightweight & breathable, flatlock seams to reduce irritation from chafing. New zoned ventilation for thermoregulation. What's new and improved: raglan sleeve construction for increased mobility, vented side hem with drop tail. Zoned thermoregulation with back panel mesh. Branded verbiage inside droptail to communicate compression fit, consumer/workout: indoor/outdoor gameday or training, fit/feel: Lightweight four-way stretch jersey provides mobility. Mesh back panel provides zoned thermoregulation. "Compression" fit for locked in feel and increased proprioception. Body width: 17.5", Body length: 28.75" (size large).

FABRIC: 100% polyester.

| | | |
|-----------------------------------|------------------------------|--------------------------------|
| 010 Black/(Cool Grey) | 022 Carbon Heather/(Black) | 100 White/(Cool Grey) |
| 341 Gorge Green/(Cool Grey) | 419 College Navy/(Cool Grey) | 494 Game Royal/(Cool Grey) |
| 545 Court Purple/(Cool Grey) | 610 Team Maroon/(Cool Grey) | 658 University Red/(Cool Grey) |
| 669 Deep Maroon/(Cool Grey) | 727 Sundown/(Cool Grey) | 784 Team Gold/(Cool Grey) |
| 888 University Orange/(Cool Grey) | | |

NEW DRI-FIT



728044 NIKE PRO COOL COMPRESSION SLEEVELESS \$30.00

SIZES: S, M, L, XL, 2XL, 3XL **OFFER DATE:** 10/01/15
END DATE: 10/01/17

Key features: Lightweight & breathable, flatlock seams to reduce irritation from chafing. New zoned ventilation for thermoregulation. What's new and improved: vented side hem with drop tail. Zoned thermoregulation with back panel mesh. Branded verbiage inside droptail to communicate compression fit, consumer/workout: indoor/outdoor gameday or training, fit/feel: Lightweight four-way stretch jersey provides mobility. Mesh back panel provides zoned thermoregulation. "Compression" fit for locked in feel and increased proprioception. Body width: 17", Body length: 28.75" (size large).

FABRIC: 100% polyester.

| | | |
|------------------------------|------------------------------|--------------------------------|
| 010 Black/(Cool Grey) | 022 Carbon Heather/(Black) | 100 White/(Cool Grey) |
| 341 Gorge Green/(Cool Grey) | 419 College Navy/(Cool Grey) | 494 Game Royal/(Cool Grey) |
| 545 Court Purple/(Cool Grey) | 610 Team Maroon/(Cool Grey) | 658 University Red/(Cool Grey) |
| 669 Deep Maroon/(Cool Grey) | 784 Team Gold/(Cool Grey) | |

NEW DRI-FIT



728049 NIKE PRO COOL 6" COMPRESSION SHORT \$28.00

SIZES: S, M, L, XL, 2XL, 3XL **OFFER DATE:** 10/01/15
END DATE: 10/01/17

Key technology: Dri-FIT fabric. Key features: Lightweight & breathable, flatlock seams to reduce irritation from chafing. Provides moisture management for gameday. What's new and improved: mesh gusset and inner leg panel for increased zoned thermoregulation. Updated NPC waistband, who is this for/type of workout: indoor/outdoor gameday or training, fit and feel: Lightweight all over four-way stretch jersey provides mobility and "compression" fit for locked in feel and increased proprioception. Hip width: 12.25", Inseam length: 7.75" (size large).

FABRIC: 100% polyester.

| | | |
|------------------------------|------------------------------|--------------------------------|
| 010 Black/(Cool Grey) | 022 Carbon Heather/(Black) | 100 White/(Cool Grey) |
| 341 Gorge Green/(Cool Grey) | 419 College Navy/(Cool Grey) | 493 Game Royal/(Cool Grey) |
| 545 Court Purple/(Cool Grey) | 610 Team Maroon/(Cool Grey) | 658 University Red/(Cool Grey) |
| 669 Deep Maroon/(Cool Grey) | | |

NEW DRI-FIT



708184

STORM-FIT DUGOUT JACKET II

\$120.00

SIZES: S, M, L, XL, 2XL, 3XL

OFFER DATE: 10/01/15
END DATE: 10/01/18

Weather-resistant Storm-FIT full-zip hooded jacket features brushed liner and polyfil for warmth. Elastic bungees at hood and waist, and sleeve gator at cuffs for added comfort and protection from the elements. Zippered pockets and dual-entry front zipper. Body width: 25", Body length: 30.25" (size large).

FABRIC: 100% polyester.

| | | |
|-------------------|------------------------|------------------|
| 010 Black/(White) | 060 Anthracite/(White) | 419 Navy/(White) |
| 493 Royal/(White) | 657 Scarlet/(White) | |

NEW STORM-FIT



708188

VAPOR L/S WINDSHIRT

\$90.00

SIZES: XS, S, M, L, XL, 2XL, 3XL

OFFER DATE: 10/01/15
END DATE: 10/01/17

Lightweight weather-repellant training and warmup jacket with 2-button baseball placket and mesh panels at underarm and sides for ventilation. Body width: 23.75", Body length: 29.25" (size large).

FABRIC: 100% polyester.

| | | |
|-------------------------|------------------------|---------------------|
| 010 Black/(White) | 060 Anthracite/(White) | 100 White/(Black) |
| 341 Dark Green/(White) | 419 Navy/(White) | 493 Royal/(White) |
| 545 Purple/(White) | 610 Cardinal/(White) | 657 Scarlet/(White) |
| 669 Dark Maroon/(White) | | |

NEW



715061

S/S HOT JACKET

\$60.00

SIZES: S, M, L, XL, 2XL, 3XL

OFFER DATE: 10/01/15
END DATE: 10/01/18

Versatile short-sleeve lightweight jacket with one-snap modified v-neck placket, zippered kangaroo pocket, and bungees at the waist. Body width: 23.25", Body length: 28.75" (size large).

FABRIC: 100% polyester.

| | | |
|------------------------------------|---------------------------------|-----------------------------------|
| 010 Black/(White) | 060 Anthracite/Black/(White) | 100 White/Anthracite/(Anthracite) |
| 341 Dark Green/Anthracite/(White) | 419 Navy/Anthracite/(White) | 493 Royal/Anthracite/(White) |
| 545 Purple/Anthracite/(White) | 610 Cardinal/Anthracite/(White) | 657 Scarlet/Anthracite/(White) |
| 669 Dark Maroon/Anthracite/(White) | | |

NEW



632184

SHIELD THERMA-FIT CREW 1.5

\$85.00

SIZES: XS, S, M, L, XL, 2XL, 3XL

OFFER DATE: 10/01/14
END DATE: 10/01/16

Baseball specific crew Therma-FIT fleece. Nike shield technology to protect against the elements. Ergonomically designed to allow to for minimal distraction during baseball movements. Zippered front pouch pocket for storage. "NIKE BSBL" repeat back neck tape. Body width: 24.75", Body length: 28.75" (size large).

FABRIC: Body: 100% polyester. Rib: 96% polyester/4% spandex.

| | | |
|-----------------------------------|---------------------------------|------------------------------------|
| 062 Anthracite/Dark Green/(White) | 064 Anthracite/Black/(White) | 066 Anthracite/Navy/(White) |
| 067 Anthracite/Royal/(White) | 070 Anthracite/Cardinal/(White) | 071 Anthracite/Dark Maroon/(White) |
| 072 Anthracite/Scarlet/(White) | | |

Therma-FIT



621940TEAM KO HOODY\$50.00

SIZES: S, M, L, XL, 2XL, 3XL, 4XLOFFER DATE: 07/01/14
END DATE: 07/01/17

Nike's number 1 performance knockout hoody features a Therma-FIT flat face and brushed back fabrication that keeps the athlete comfortable during activity. Features a 3 panel hood lined in mesh and an updated gusset under the arm providing mobility as well as great color blocking options. Decorative topstitching throughout the garment screams premium craftsmanship. Double bartack at neck provides reinforcement for enhanced durability. Embroidered #4 Swoosh design trademark at right chest. Nike trademark repeat back neck tape. Body width: 24.25", Body length: 28.75" (size large).

Part of Tee/Fleece Embellishment Program.

FABRIC: 100% polyester.

| | | | | | |
|-----|---------------------------------|-----|-------------------------------------|-----|------------------------------------|
| 020 | Black/Anthracite/(Anthracite) | 062 | Anthracite/Black/(Black) | 361 | Dark Green/Anthracite/(Anthracite) |
| 418 | Navy/Anthracite/(Anthracite) | 466 | Royal/Anthracite/(Anthracite) | 552 | Purple/Anthracite/(Anthracite) |
| 656 | Scarlet/Anthracite/(Anthracite) | 691 | Dark Maroon/Anthracite/(Anthracite) | 693 | Cardinal/Anthracite/(Anthracite) |

Therma-FIT



621942TEAM KO PANT\$55.00

SIZES: S, M, L, XL, 2XL, 3XL, 4XLOFFER DATE: 07/01/14
END DATE: 07/01/17

Nike's number 1 performance knockout pant features a Therma-FIT flat face and brushed back fabrication that keeps the athlete comfortable during activity. Pockets at side seams. Bungee at bottom hem. Decorative topstitching throughout the garment screams premium craftsmanship. Color blocked side insets. Embroidered Swoosh design trademark at lower left leg. Nike trademark repeat waistband. Hip width: 23.375", Inseam length: 32.5" (size large).

Part of Tee/Fleece Embellishment Program.

FABRIC: 100% polyester.

| | | | | | |
|-----|---------------------------------|-----|-------------------------------------|-----|------------------------------------|
| 020 | Black/Anthracite/(Anthracite) | 062 | Anthracite/Black/(Black) | 361 | Dark Green/Anthracite/(Anthracite) |
| 418 | Navy/Anthracite/(Anthracite) | 466 | Royal/Anthracite/(Anthracite) | 552 | Purple/Anthracite/(Anthracite) |
| 656 | Scarlet/Anthracite/(Anthracite) | 691 | Dark Maroon/Anthracite/(Anthracite) | 693 | Cardinal/Anthracite/(Anthracite) |

Therma-FIT



384407

LEGEND S/S POLY TOP

\$22.00

SIZES: S, M, L, XL, 2XL, 3XL, 4XL

OFFER DATE: 06/01/10
END DATE: 04/01/16

Dri-FIT fabric wicks away sweat to help keep you comfortable and dry. Short-sleeve construction is ideal for a variety of training conditions. Neck tape added for durability and comfort. Swoosh design trademark at upper left chest. Body width: 22.75", Body length: 29.25" (size large). **Part of Tee/Fleece Embellishment Program.**

FABRIC: Body: 100% polyester.

| | | |
|--------------------------------------|--------------------------------|----------------------------------|
| 010 Black/(Matte Silver) | 091 Carbon Heather/(Black) | 100 White/(Matte Silver) |
| 341 Dark Green/(Matte Silver) | 419 Navy/(Matte Silver) | 448 Light Blue/(Matte Silver) |
| 493 Royal/(Matte Silver) | 545 Purple/(Matte Silver) | 610 Cardinal/(Matte Silver) |
| 657 Scarlet/(Matte Silver) | 669 Dark Maroon/(Matte Silver) | 698 Crimson/(Matte Silver) |
| 727 Bright Gold/(Matte Silver) | 783 Vegas Gold/(Matte Silver) | 802 Desert Orange/(Matte Silver) |
| 888 University Orange/(Matte Silver) | | |

Youth #453189 / S-XL / \$20.00 / Body width: 17.75", Body length: 23.5" (size medium)

DRI-FIT



418635

MEN'S 3 POCKET FLY SHORT

\$38.00

SIZES: S, M, L, XL, 2XL, 3XL, 4XL

OFFER DATE: 06/01/11
END DATE: 04/01/16

Dri-FIT circular knit body fabric. Brushed waistband with drawcord. Swoosh design trademark at lower left hem. Hip width: 25.75" (size large), Inseam length: 9.25" (all sizes).

FABRIC: 100% polyester.

| | | |
|---------------------|-------------------------|------------------------|
| 010 Black/(White) | 060 Anthracite/(White) | 341 Dark Green/(White) |
| 419 Navy/(White) | 493 Royal/(White) | 610 Cardinal/(White) |
| 657 Scarlet/(White) | 669 Dark Maroon/(White) | |

DRI-FIT



361056

MEN'S TEAM FLY SHORT

\$28.00

SIZES: S, M, L, XL, 2XL, 3XL, 4XL

OFFER DATE: 12/01/09
END DATE: 04/01/16

Dri-FIT circular knit body fabric. Brushed waistband with drawcord. Inside waistband will be Anthracite for ALL colorways. Swoosh design trademark at lower left hem. Hip width: 24.5" (size large), Inseam length: 10" (all sizes).

FABRIC: 100% polyester.

| | | |
|--------------------------------|--------------------------------|-------------------------------|
| 010 Black/(Matte Silver) | 060 Anthracite/(Matte Silver) | 341 Dark Green/(Matte Silver) |
| 419 Navy/(Matte Silver) | 448 Light Blue/(Matte Silver) | 493 Royal/(Matte Silver) |
| 545 Purple/(Matte Silver) | 610 Cardinal/(Matte Silver) | 657 Scarlet/(Matte Silver) |
| 669 Dark Maroon/(Matte Silver) | 716 Bright Gold/(Matte Silver) | 783 Vegas Gold/(Matte Silver) |
| 820 Orange/(Matte Silver) | | |

DRI-FIT





633158 | STOCK NIKE TRUE VAPOR SF CAP \$25.00

SIZES: S/M, M/L, L/X
 Ultimate performance and comfort in our signature Nike True Silhouette. This structured six panel cap is constructed in Dri-FIT fabric and features a Dri-FIT terry sweatband for excellent moisture management. Our patented vapor bill construction reduces pressure against your forehead and reduces weight providing unmatched comfort. The back four panels are laser perforated to increase ventilation and reduce weight. This Swoosh flex cap stretches to accommodate a variety of sizes.

| | | |
|-------------------|---------------------|------------------|
| 010 Black/(White) | 100 White/(Black) | 419 Navy/(White) |
| 493 Royal/(White) | 657 Scarlet/(White) | |

DRI-FIT

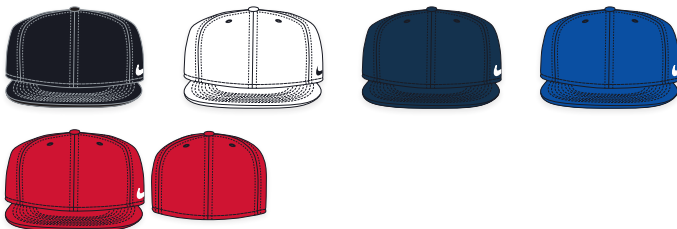


388831 | STOCK LEGACY 91 SWOOSH FLEX CAP \$18.00

SIZES: S/M, M/L, L/XL
 Our structured six-panel Legacy 91 Silhouette with Dri-FIT fabric, heavy buckram, embroidered eyelets, 40mm bill curve. Dri-FIT Swoosh flex sweatband.

| | | |
|------------------------|------------------------|---------------------|
| 010 Black/(White) | 060 Anthracite/(White) | 100 White/(Black) |
| 341 Dark Green/(White) | 419 Navy/(White) | 494 Royal/(White) |
| 545 Purple/(White) | 610 Cardinal/(White) | 658 Scarlet/(White) |

DRI-FIT



384409 | STOCK NIKE TRUE SWOOSH FLEX CAP \$20.00

SIZES: S/M, M/L, L/X
 Our signature Nike True Silhouette, six-panel cap offers heavy buckram, flat bill, Dri-FIT fabric, Dri-FIT Swoosh flex sweatband and embroidered eyelets.

| | | |
|-------------------|---------------------|------------------|
| 010 Black/(White) | 100 White/(Black) | 419 Navy/(White) |
| 493 Royal/(White) | 657 Scarlet/(White) | |

DRI-FIT



102699 | STOCK HERITAGE 86 CAP \$15.00

SIZES: One Size Fits Most
 Our adjustable six-panel Heritage 86 Silhouette is unstructured with washed cotton, 40 mm bill curve, embroidered eyelets and a totally clean finish closure.

| | | |
|---------------------|------------------------|----------------------|
| 010 Black/(White) | 060 Anthracite/(White) | 100 White/(Black) |
| 221 Chino/(White) | 341 Dark Green/(White) | 419 Navy/(White) |
| 494 Royal/(White) | 545 Purple/(White) | 610 Cardinal/(White) |
| 658 Scarlet/(White) | | |



807127 | LUNAR TROUT 2 \$140.00

SIZES: 8-14 OFFER DATE: 10/1

Built to the exact specifications of Mike Trout.
UPPER: Synthetic leather upper strategically molded for structure. Ultra-light flywire for lockdown, neoprene booty acts as a base layer for your foot.
MIDSOLE: Lunarlon foam delivers soft, responsive ride. Zoom Air unit in the forefoot for responsive low profile cushioning.
OUTSOLE: Pebax® speed plate with 9-cleat configuration for traction and durability. Insert provides flexible propulsion.

| | |
|--------------------------|----------------------|
| 010 Black/White | 410 Game Royal/White |
| 610 University Red/White | |

NEW



683895 | NIKE LUNAR VAPOR PRO \$110.00

SIZES: 8-14 OFFER DATE: C/O

Vapor Pro is ideal if you're a serious baseball player who's looking for a cleat with lightweight speed, traction, and comfort.
UPPER: Lightweight sl and premium TPU toe guard for enhanced durability.
MIDSOLE: Lunarlon foam delivers soft, responsive ride.
OUTSOLE: Pebax® speed plate for excellent traction and durability.

| | |
|----------------------------|-----------------------|
| 010 Black/White-Anthracite | 101 White/Black-Black |
|----------------------------|-----------------------|



684685 | NIKE AIR MVP PRO METAL II \$85.00

SIZES: 4-14, 15, 16 OFFER DATE: C/O

Nike Air MVP Pro II is a versatile, low cut cleat for fielding and rounding the bases like a pro.
UPPER: Durable synthetic leather upper for enhanced ventilation, support and fit. Mesh tongue keeps foot cool and comfortable.
MIDSOLE: Full-length Phylon midsole for lightweight cushioning and comfort.
OUTSOLE: TPU outsole with 9 cleat configuration, six full length cleat and three supplemental cleats for traction while reducing hot spots.

| |
|-----------------|
| 010 Black/White |
|-----------------|

749359 | AIR HUARACHE 2KFILTH ELITE MID \$100.00

SIZES: 8-14 OFFER DATE: 10/1

| | |
|----------------------|-------------------------------|
| 010 Black/White | 011 Cool Grey/White-Wolf Grey |
| 411 Game Royal/White | 610 University Red/White |

NEW



684690 | NIKE LUNAR MVP PREGAME II \$85.00

SIZES: 6-15, 16, 17, 18 OFFER DATE: C/O

The ultimate baseball trainer for pre-game, post-game and everything in between.
UPPER: Lightweight synthetic leather and mesh upper provides great performance fit and excellent breathability.
MIDSOLE: Full-length Lunar midsole for zoned cushion and response.
OUTSOLE: Solid rubber outsole with hybrid traction pattern and lateral outrigger for traction and lateral stability.

| | |
|---------------------------------|----------------------------|
| 010 Black/White (Synthetic) | 040 Black/Rush Blue (Mesh) |
| 060 Black/University Red (Mesh) | 100 White/Black (Mesh) |



333785 | AIR DIAMOND TRAINER \$60.00

SIZES: 4-14, 15, 16 **OFFER DATE:** C/O
A classic baseball trainer designed for the needs of today's athlete.
UPPER: Lightweight synthetic leather combination with removable tongue flap.
MIDSOLE: Full-length Phylon midsole with Air-Sole unit in heel.
OUTSOLE: Rubber outsole combines our nubby bottom outsole with cross-training traction to meet the on-field needs of MLB players.

012 Black/White-Metallic Silver
Available in Wide:334096-012 Black/White



707442 | NIKE VAPOR KEYSTONE 2 LOW \$40.00

SIZES: 6.5-13 **OFFER DATE:** 10/1
A new lightweight low-cut speed-inspired baseball cleat for all turf conditions.
UPPER: Low-cut synthetic leather with TPU drag cap for enhanced durability. EVA sockliner for lightweight cushioning and comfort.
MIDSOLE: Sculpted Phylon midsole wedge for lightweight cushioning and comfort.
OUTSOLE: 3-color solid rubber outsole with 12-cleat configuration for great traction and durability. Power Channel flex grooves.

010 Black/White



707443 | NIKE VAPOR KEYSTONE 2 LOW (GS) \$30.00

SIZES: 10c-13c, 1y-6y **OFFER DATE:** 10/1
A new lightweight low-cut speed-inspired baseball cleat for all turf conditions.
UPPER: Low-cut synthetic leather with TPU drag cap for enhanced durability. EVA sockliner for lightweight cushioning and comfort.
MIDSOLE: Sculpted Phylon midsole wedge for lightweight cushioning and comfort.
OUTSOLE: 3-color solid rubber outsole with 12-cleat configuration for great traction and durability. Power Channel flex grooves.

010 Black/White



723987 | NIKE FREE TRAINER 5.0 TB \$100.00

SIZES: 6-13, 14, 15, 16, 17, 18 **OFFER DATE:** C/O
Nike's most versatile training shoe for the athlete who needs to be ready for anything.
UPPER: Breathable mesh upper with welded flex zones to enable a full range of motion. Internal support structure.
MIDSOLE: Flexible hexagonal pods allow freedom of movement in multiple directions.
OUTSOLE: Traction pattern is optimized for a variety of surfaces.

001 Black/White-Cool Grey 100 White/Black-Cool Grey



BA4757 | MVP ELITE ROLLER BAG \$130.00

SIZES: MISC **OFFER DATE:** C/O
Tough 600D polyester • Dual-zippered main compartment • Quiet, easy-roll wheels • Adjustable shoulder strap • Interior mesh pocket

087 Black/Anthracite/Volt

BA5173 | VAPOR ELITE BAT BACKPACK—GRAPHIC \$75.00

SIZES: MISC OFFER DATE: 10/1

| | |
|-------------------------------------|-----------------------------------|
| 010 Black/Black/(White) | 037 Tumbled Grey/Black/(Volt) |
| 410 Midnight Navy/Obsidian/(White) | 480 Game Royal/Deep Royal/(White) |
| 657 University Red/Dark Red/(White) | |

NEW

BA5172 | MVP SELECT DUFFLE \$55.00

SIZES: MISC OFFER DATE: 10/1

Longer silhouette made of 600D polyester for ample storage and durability • Sewn-in fence hooks • External zip bat sleeve • Haul loop at front and adjustable shoulder strap for custom carrying options Small pouch at front for organization

DIMENSIONS: 36" L x 10"W x 10"H

FABRIC: 95% polyester, 5% polyurethane.

010 Black/Black/(White)

NEW



NIKE ELITE BASEBALL VAPOR OTC \$22.00

Orders accepted in increments of 6 PPK units only

SIZES: S-XL OFFER DATE: 10/1

Dri-FIT fabric / Wicks away moisture to help keep feet dry and cool • Arch support / Snug, secure fit • Compression knit / Supportive fit for game-day comfort • Reinforced heel and toe / Enhanced durability in high-wear areas

SIZE: L sock = M 8-12 shoe size, W 10-13 shoe size; M sock = M 6-8 shoe size, W 6-10 shoe size.

| | | |
|------------|-----------------------------|---------|
| SX4844-006 | Black/(Flint Grey) | \$22.00 |
| SX4844-120 | White/(Neutral Grey) | \$22.00 |
| SX4844-406 | Game Royal/(Flint Grey) | \$22.00 |
| SX4844-410 | College Navy/(Flint Grey) | \$22.00 |
| SX4844-650 | University Red/(Flint Grey) | \$22.00 |

DRI-FIT

GB0399 | NIKE MVP ELITE PRO 2.0 \$60.00

SIZES: XS-2XL OFFER DATE: 10/1

DESCRIPTION

| | |
|---|---|
| 060 Anthracite/Bone/Anthracite/(Chrome) | 419 College Navy/Bone/College Navy/(Chrome) |
| 480 Game Royal/Bone/Game Royal/(Chrome) | 658 Univ Red/Bone/Univ Red/(Chrome) |

NEW



3PPK DRI-FIT CUSHION CREW \$18.00

Orders accepted in increments of 6 PPK units only

SIZES: S-XL OFFER DATE: C/O

Cushioned terry foot / Comfort and shock absorption • Dri-FIT fabric / Wicks away moisture to keep feet dry and cool • Arch support / Snug, secure fit • Anatomical left and right / Superior fit and cushioning

FABRIC: 60% polyester/26% nylon/12% cotton/2% spandex.

SIZE: XL sock = M 12-15 shoe size; L sock = M 8-12 shoe size, W 10-13 shoe size; M sock = M 6-8 shoe size, W 6-10 shoe size.

| | | |
|------------|--------------------|---------|
| SX4827-001 | Black/(Flint Grey) | \$18.00 |
| SX4827-101 | White/(Flint Grey) | \$18.00 |

DRI-FIT