

Fully sublimated jersey for lightweight customization

Dri-FIT flat back mesh provides moisture-wicking comfort

Sublimated custom logo or number

Molded sockliner for added comfort

Geo balanced technology for more accurate flight

Dri-FIT fabric keeps feet dry

Calf leather upper for comfort



WOMEN'S SOCCER

1 WMNS DIGITAL GAME JERSEY 12

456246 \$80 PAGE 54

2 WMNS DIGITAL SOCCER GAME SHORT

428812 \$60 PAGE 54

3 CLASSIC III SOCK

394386 \$10 PAGE 64

4 NIKE PREMIER TEAM NFHS

SC1910 \$40 PAGE 65

5 WMNS TIEMPO FLIGHT FG

453961 \$115 PAGE 62

456268

WMNS CLASSIC IV JERSEY

\$55.00

SIZES: S, M, L, XL, 2XL
Global Soccer Fit

OFFER DATE: 01/01/12
END DATE: 01/01/15

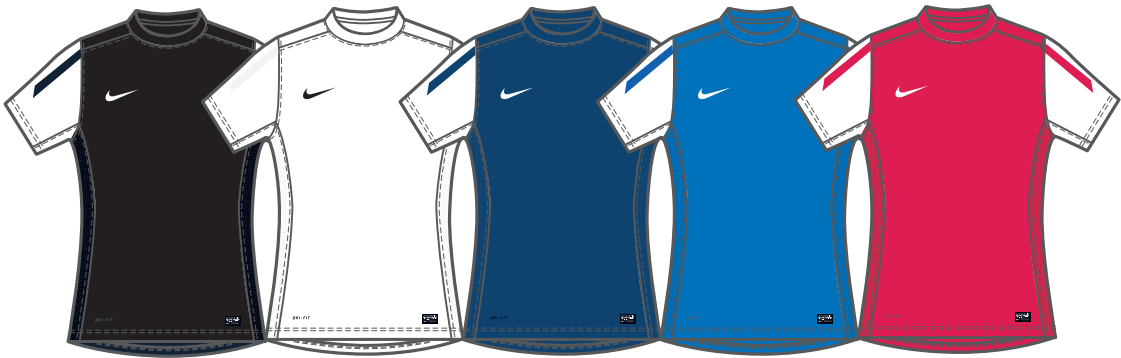
Forward shoulder seam, straight hem, with twin needle stitch, silicon sleeve print on arm, embroidered Swoosh design trademark, authentic jock tag, Dri-FIT embroidery. Inspired by arsenal FA11 home design. Body width: 18.75", Body length: 26.75" (size medium).

FABRIC: 100% polyester.

012 Black/White/(White)	100 White/White/(Black)	420 Navy/White/(White)
494 Royal/White/(White)	658 Scarlet/White/(White)	

Youth #456463 / S-XL / \$50.00 / Body width: 16.75", Body length: 24" (size medium)

NEW DRI-FIT



456269

WMNS CLASSIC IV WOVEN SHORT

\$35.00

SIZES: S, M, L, XL, 2XL
Global Soccer Fit

OFFER DATE: 01/01/12
END DATE: 01/01/15

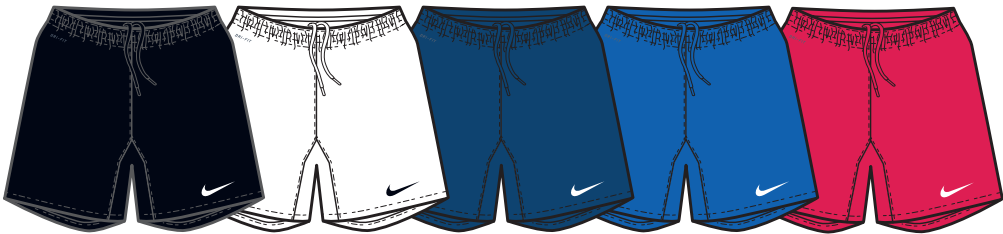
4cm wide fold over, elasticated waistband, 3cm deep split to hem. Embroidered Swoosh design trademark, Dri-FIT embroidery. Hip width: 21.75", Inseam length: 5" (size medium).

FABRIC: 100% polyester.

010 Black/(White)	100 White/(Black)	419 Navy/(White)
493 Royal/(White)	657 Scarlet/(White)	

Youth #456464 / S-XL / \$30.00 / Hip width: 19.25", Inseam length: 4" (size medium)

NEW DRI-FIT



379177

WMNS LASER JERSEY

\$48.00

SIZES: S, M, L, XL
US Team Sports Fit

OFFER DATE: 04/01/10
END DATE: 01/01/14

Short-sleeve V-neck raglan soccer game jersey. Dri-FIT fabric jersey with horizontal stripes, 1x1 knit rib neck band, #2 embroidered Swoosh design trademark, heat transfer Nike Team Sports jock tag at lower left front. Body width: 18.75", Body length: 26" (size medium).

FABRIC: 100% polyester.

012 Black/White/(White)	104 White/Cardinal/(Cardinal)	106 White/Black/(Black)
107 White/Navy/(Navy)	108 White/Royal/(Royal)	109 White/Scarlet/(Scarlet)
110 White/Purple/(Purple)	111 White/Dark Green/(Dark Green)	113 White/Univ Orange/(Univ Orange)
342 Dark Green/White/(White)	420 Navy/White/(White)	494 Royal/White/(White)
546 Purple/White/(White)	612 Cardinal/White/(White)	658 Scarlet/White/(White)
889 Univ Orange/White/(White)		

Youth #379138 / S-XL / \$42.00 / Body width: 16.75", Body length: 24" (size medium)

DRI-FIT 



379178

WMNS LASER WOVEN SHORT

\$38.00

SIZES: S, M, L, XL
US Team Sports Fit

OFFER DATE: 04/01/10
END DATE: 01/01/14

Woven soccer game short with liner. Dri-FIT stretch taffeta with Dri-FIT mesh side insets and brief liner, exposed elastic waist with drawcord, #2 embroidered Swoosh design trademark at left front. Hip width: 21", Inseam length: 4" (size medium).

FABRIC: Body: 84% polyester/16% spandex. Lining: 100% polyester.

010 Black/Black/(White)	012 Black/White/(White)	100 White/White/(Black)
342 Dark Green/White/(White)	420 Navy/White/(White)	494 Royal/White/(White)
546 Purple/White/(White)	612 Cardinal/White/(White)	658 Scarlet/White/(White)
889 Univ Orange/White/(White)		

Youth #379139 / S-XL / \$33.00 / Hip width: 18.5", Inseam length: 4" (size medium)

DRI-FIT 



379179 | WMNS BRASILIA II JERSEY

\$44.00

SIZES: S, M, L, XL
US Team Sports Fit

OFFER DATE: 04/01/10
END DATE: 01/01/14

Dri-FIT fabric short-sleeve crewneck soccer jersey. No distractions seaming. #3 Swoosh design trademark at upper right chest, Nike Team Sport jock tag at lower left front. Body width: 18.75", Body length: 26.75" (size medium).

FABRIC: 100% polyester.

010 Black/(White)	100 White/(Silver)	341 Dark Green/(White)
419 Navy/(White)	448 Light Blue/(White)	493 Royal/(White)
610 Cardinal/(White)	657 Scarlet/(White)	750 Gold/(White)
888 University Orange/(White)		

Youth #379140 / \$40.00 / Body width: 16.75", Body length: 24" (size medium)

DRI-FIT 



427679 | WMNS BRASILIA II GAME SHORT

\$30.00

SIZES: S, M, L, XL
US Team Sports Fit

OFFER DATE: 04/01/10
END DATE: 01/01/14

Dri-FIT fabric longer length soccer game short. No distractions seaming. #3 Swoosh design trademark at left front. Hip width: 21.75", Inseam length: 5" (size medium).

FABRIC: 100% polyester.

010 Black/(White)	100 White/(Silver)	341 Dark Green/(White)
419 Navy/(White)	448 Light Blue/(White)	493 Royal/(White)
610 Cardinal/(White)	657 Scarlet/(White)	750 Gold/(White)
888 University Orange/(White)		

Youth #427678 / S-XL / \$27.00 / Hip width: 19.25", Inseam length: 4" (size medium)

DRI-FIT 



413174 | WMNS FEDERATIONS S/S JERSEY

\$40.00

SIZES: XS, S, M, L, XL
Global Soccer Fit

OFFER DATE: 01/01/12
END DATE: 01/01/14

Dri-FIT single knit popcorn at front/sleeves, cut & sew side panel. Dri-FIT warp knit mesh at back panel. Dri-FIT embroidery at front. #5 embroidered Swoosh design trademark. Jock tag. Body width: 18", Body length: 26" (size medium).

FABRIC: 100% polyester.

012 Black/White/(White)	100 White/White/(Black)	342 Dark Green/White/(White)
420 Navy/White/(White)	453 Light Blue/White/(White)	494 Royal/White/(White)
546 Purple/White/(White)	612 Cardinal/White/(White)	658 Scarlet/White/(White)
889 University Orange/White/(White)		

Youth #413183 / XS-XL / \$35.00 / Body width: 16.75", Body length: 24" (size medium)



413180 | WMNS FEDERATIONS SHORT WB

\$30.00

SIZES: XS, S, M, L, XL
Global Soccer Fit

OFFER DATE: 01/01/12
END DATE: 01/01/14

Dri-FIT single knit popcorn at front/back/side panel. Warp knit mesh for inner brief. Dri-FIT embroidery at front. #5 embroidered Swoosh design trademark. Jock tag. Hip width: 22", Inseam length: 6" (size medium).

FABRIC: 100% polyester.

012 Black/White/(White)	100 White/White/(White)	342 Dark Green/White/(White)
420 Navy/White/(White)	453 Light Blue/White/(White)	494 Royal/White/(White)
546 Purple/White/(White)	612 Cardinal/White/(White)	658 Scarlet/White/(White)
889 University Orange/White/(White)		

Youth #413185 / XS-XL / \$25.00 / Hip width: 19.25", Inseam length: 4" (size medium)



456270 | WMNS HERTHA JERSEY

\$35.00

SIZES: S, M, L, XL, 2XL
Global Soccer Fit

OFFER DATE: 01/01/12
END DATE: 01/01/15

Self fabric v-neck (cross-over), forward shoulder seam, self fabric cut and sew contrast chest band, straight hem with twin needle stitch. Embroidered Swoosh design trademark, jock tag, Dri-FIT embroidery. Body width: 18.75", Body length: 26.75" (size medium).

FABRIC: 100% polyester.

012 Black/White/(Black)	100 White/White/(Black)	420 Navy/White/(Navy)
494 Royal/White/(Royal)	658 Scarlet/White/(Scarlet)	

Youth #456465 / XS-XL / \$35.00 / Body width: 16.75", Body length: 24" (size medium)

NEW

DRI-FIT

Y



456271 | WMNS HERTHA KNIT SHORT

\$25.00

SIZES: S, M, L, XL, 2XL
Global Soccer Fit

OFFER DATE: 01/01/12
END DATE: 01/01/15

4cm wide fold over elasticated waistband, 12cm wide mesh gusset, 4cm deep mesh panel 2cm wide self fabric contrast cut & sew. Embroidered Swoosh design trademark, embroidered Dri-FIT logo. Hip width: 21.75", Inseam length: 4" (size medium).

FABRIC: 100% polyester.

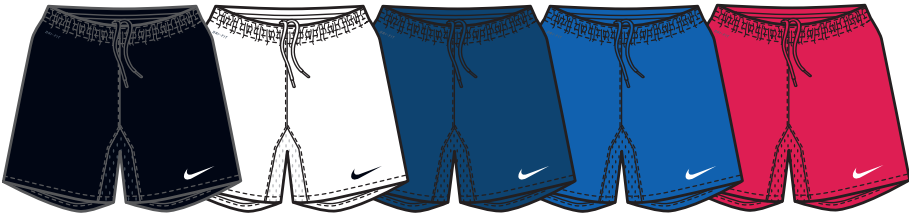
012 Black/White/(White)	100 White/White/(Black)	420 Navy/White/(White)
494 Royal/White/(White)	658 Scarlet/White/(White)	

Youth #456466 / S-XL / \$22.00 / Hip width: 19.25", Inseam length: 4" (size medium)

NEW

DRI-FIT

Y



379181 | WMNS MYSTIFI JERSEY

\$35.00

SIZES: S, M, L, XL
US Team Sports Fit

OFFER DATE: 04/01/10
END DATE: 01/01/14

Short-sleeve v-neck soccer game jersey. Dri-FIT piqué with Dri-FIT mesh insets. Flattering color blocked team color to white, #3 embroidered Swoosh design trademark at right front, heat transfer Nike Team Sports jock tag at lower left front. Body width: 18.75", Body length: 26.75" (size medium).

FABRIC: 100% polyester.

012 Black/White/(White)	100 White/White/(Silver)	342 Dark Green/White/(White)
410 Navy/White/(White)	453 Light Blue/White/(White)	494 Royal/White/(White)
546 Purple/White/(White)	612 Cardinal/White/(White)	658 Scarlet/White/(White)

Youth #379142 / S-XL / \$30.00 / Body width: 16.75", Body length: 24" (size medium)

DRI-FIT 



399907 | WMNS MYSTIFI SLEEVELESS JERSEY

\$30.00

SIZES: XS, S, M, L, XL
US Team Sports Fit

OFFER DATE: 04/01/11
END DATE: 01/01/14

Dri-FIT sleeveless double knit jersey, v-neck, mesh insets. Flattering color blocked with team color to white, embroidered Swoosh design trademark at right front, small Nike Team Sports jock tag heat transfer at lower left front. Body width: 18.75", Body length: 26.75" (size medium).

FABRIC: 100% polyester.

012 Black/White/(White)	100 White/White/(Silver)	342 Dark Green/White/(White)
410 Navy/White/(White)	453 Light Blue/White/(White)	494 Royal/White/(White)
546 Purple/White/(White)	612 Cardinal/White/(White)	658 Scarlet/White/(White)

Youth #399905 / XS-XL / \$25.00 / Body width: 16.5", Body length: 24" (size medium)

DRI-FIT 



379182 | WMNS MYSTIFI GAME SHORT

\$30.00

SIZES: S, M, L, XL
US Team Sports Fit

OFFER DATE: 04/01/10
END DATE: 01/01/14

Woven soccer game short. Dri-FIT taffeta with Dri-FIT mesh side insets, Dri-FIT mesh brief liner in white colorways only. Flattering color blocked team color to white, #3 embroidered Swoosh design trademark at left front. Hip width: 21.75", Inseam length: 4" (size medium).

FABRIC: 100% polyester.

012 Black/White/(White)	100 White/White/(Silver)	342 Dark Green/White/(White)
420 Navy/White/(White)	453 Light Blue/White/(White)	494 Royal/White/(White)
546 Purple/White/(White)	612 Cardinal/White/(White)	658 Scarlet/White/(White)

Youth #379143 / S-XL / \$28.00 / Hip width: 19.25", Inseam length: 4" (size medium)

DRI-FIT 



379183 | WMNS PASADENA II JERSEY

\$25.00

SIZES: S, M, L, XL
US Team Sports Fit

OFFER DATE: 04/01/10
END DATE: 01/01/14

Short-sleeve crewneck soccer game jersey. Front chest design line to coordinate with Men's Rio kit. Dri-FIT piqué with Dri-FIT mesh side panels, #3 embroidered Swoosh design trademark at right front. Body width: 18.75", Body length: 26.75" (size medium).

FABRIC: 100% polyester.

012 Black/White/(White)	100 White/White/(Silver)	342 Dark Green/White/(White)
420 Navy/White/(White)	453 Light Blue/White/(White)	494 Royal/White/(White)
612 Cardinal/White/(White)	658 Scarlet/White/(White)	741 Gold/White/(White)
889 University Orange/White/(White)		

Youth #379144 / \$22.00 / Body width: 16.75", Body length 24" (size medium)

DRI-FIT 



379184 | WMNS PASADENA II GAME SHORT

\$20.00

SIZES: S, M, L, XL
US Team Sports Fit

OFFER DATE: 04/01/10
END DATE: 01/01/14

Woven soccer game short. Dri-FIT taffeta with Dri-FIT mesh back yoke, contrast color side panels, Dri-FIT mesh brief liner in white colorways only, elastic waist with drawcord, #3 embroidered Swoosh design trademark at left front. Hip width: 21.75", Inseam length: 4" (size medium).

FABRIC: 100% polyester.

012 Black/White/(White)	100 White/White/(Silver)	342 Dark Green/White/(White)
420 Navy/White/(White)	453 Light Blue/White/(White)	494 Royal/White/(White)
612 Cardinal/White/(White)	658 Scarlet/White/(White)	741 Gold/White/(White)
889 University Orange/White/(White)		

Youth #379145 / S-XL / \$18.00 / Hip width: 19.25", Inseam length: 4" (size medium)

DRI-FIT 



453181 WMNS LEGEND S/S TEE \$25.00

SIZES: XS, S, M, L, XL, 2XL **OFFER DATE:** 12/01/11 **END DATE:** 12/01/13

Dri-FIT fabric wicks away sweat to help keep you comfortable and dry. Short-sleeve construction is ideal for a variety of training conditions. Neck tape added for durability and comfort. Swoosh design trademark at upper left chest. Body width: 18.75", Body length: 26.25" (size medium).

FABRIC: 100% polyester.

010 Black/(Matte Silver)	100 White/(Matte Silver)	260 Onyx Heather/(Black)
341 Gorge Green/(Matte Silver)	419 College Navy/(Matte Silver)	448 Valor Blue/(Matte Silver)
493 Game Royal/(Matte Silver)	545 Court Purple/(Matte Silver)	610 Team Maroon/(Matte Silver)
657 University Red/(Matte Silver)	667 Shy Pink/(Matte Silver)	669 Deep Maroon/(Matte Silver)
698 Team Crimson/(Matte Silver)	727 Sundown/(Matte Silver)	783 Team Gold/(Matte Silver)
802 Desert Orange/(Matte Silver)	888 University Orange/(Matte Silver)	

Youth #453189 / S-XL / \$22.00 / Body width: 17.75", Body length: 23.5" (size medium)

NEW DRI-FIT **Y**



453182 WMNS LEGEND L/S TEE \$28.00

SIZES: XS, S, M, L, XL, 2XL **OFFER DATE:** 12/01/11 **END DATE:** 12/01/13

Dri-FIT fabric wicks away sweat to help keep you comfortable and dry. Long-sleeve construction is ideal for a variety of training conditions. Neck tape added for durability and comfort. Swoosh design trademark at upper left chest. Body width: 18.75", Body length: 26.25" (size medium).

FABRIC: 100% polyester.

010 Black/(Matte Silver)	100 White/(Matte Silver)	260 Onyx Heather/(Black)
341 Gorge Green/(Matte Silver)	419 College Navy/(Matte Silver)	448 Valor Blue/(Matte Silver)
493 Game Royal/(Matte Silver)	545 Court Purple/(Matte Silver)	610 Team Maroon/(Matte Silver)
657 University Red/(Matte Silver)	667 Shy Pink/(Matte Silver)	669 Deep Maroon/(Matte Silver)
698 Team Crimson/(Matte Silver)	727 Sundown/(Matte Silver)	783 Team Gold/(Matte Silver)
802 Desert Orange/(Matte Silver)	888 University Orange/(Matte Silver)	

NEW DRI-FIT



410626 NIKE PRO - CORE TIGHT (COMPRESSION) SLEEVELESS V-NECK \$28.00

SIZES: XS, S, M, L, XL, 2XL **OFFER DATE:** 06/01/10 **END DATE:** 06/01/13

Dri-FIT poly spandex top Nike Pro fitted sleeveless V-neck. Body-skimming top with raglan arm-hole and backwards wrapping side seams. Pop color stitch and inside neck band on fashion colorways. #3 Swoosh design trademark heat transfer. Body width: 15.25", Body length: 25" (size medium).

FABRIC: Body (solid): Dri-FIT 170 g. 84% polyester/16% spandex. Body (heather): Dri-FIT 167 g. 84% polyester/16% spandex.

010 Black/(White)	091 Carbon Heather/(White)	100 White/(Cool Grey)
341 Dark Green/(White)	419 Navy/(White)	493 Royal/(White)
545 Purple/(White)	610 Cardinal/(White)	657 Scarlet/(White)
669 Dark Maroon/(White)	783 Vegas Gold/(White)	

DRI-FIT **COMPRESSION**



\$35.00

OFFER DATE: 06/01/10
END DATE: 06/01/13

FABRIC: Body (solid): Dri-FIT 170 g. 84% polyester/16% spandex. Body (heather): Dri-FIT 167 g. 84% polyester/16% spandex.

DRI-FIT COMPRESSION

\$25.00

OFFER DATE: 06/01/10
END DATE: 06/01/13

FABRIC: Body: Dri-FIT 230 g. 82% polyester/18% spandex.

DRI-FIT COMPRESSION

\$28.00

OFFER DATE: 06/01/10
END DATE: 06/01/13

FABRIC: Body: 82% polyester/18% spandex.

DRI-FIT COMPRESSION

410633

NIKE PRO FITTED S/S V-NECK

\$30.00

SIZES: XS, S, M, L, XL, 2XL

OFFER DATE: 06/01/10
END DATE: 06/01/13

Dri-FIT poly spandex top Nike Pro fitted short-sleeve V-neck. Body-skimming top with raglan arm-hole and backwards wrapping side seams. Pop color stitch and inside neck band on fashion colorways. #3 Swoosh design trademark heat transfer. Body width: 17.5", Body length: 26" (size medium).

FABRIC: Body (solid): Dri-FIT 170 g. 84% polyester/16% spandex. Body (heather): Dri-FIT 167 g. 84% polyester/16% spandex.

010 Black/(White)	091 Carbon Heather/(White)	100 White/(Cool Grey)
341 Dark Green/(White)	419 Navy/(White)	493 Royal/(White)
545 Purple/(White)	610 Cardinal/(White)	657 Scarlet/(White)
669 Dark Maroon/(White)	727 Bright Gold/(White)	783 Vegas Gold/(White)
810 Orange/(White)		

DRI-FIT **FITTED**



410624

NIKE PRO HYPERCOOL RACER-BACK TANK

\$35.00

SIZES: XS, S, M, L, XL, 2XL

OFFER DATE: 06/01/10
END DATE: 06/01/13

Nike Pro Hypercool racer-tank V-neck. Body skimming fit with bonded mesh panel in the center back for maximum ventilation. Contrast color to highlight this innovation appeal to the athlete. Nike Pro branding at inside neck band. #3 heat transfer Swoosh design trademark. Body width: 17", Body length: 24.75" (size medium).

FABRIC: Body: 84% polyester/16% spandex. Side panel: 80% polyester/20% spandex. Back panel: 81% polyester/19% spandex.

010 Black/Black/White/(White)	100 White/White/White/(Cool Grey)	419 Navy/Navy/White/(White)
494 Royal/Royal/White/(White)	658 Scarlet/Scarlet/White/(White)	

DRI-FIT



410631

NIKE PRO BRA

\$30.00

SIZES: XS, S, M, L, XL, 2XL

OFFER DATE: 06/01/10
END DATE: 06/01/13

New Dri-FIT Nike Pro compression bra with updated fit and fabrication. Revised body shape for improved support. Bonded seam on front snap, side exterior seam bonded seams. The perfect bra for every activity and motion with its compression fit which provides excellent support. Every detail is carefully considered including the flat and clean finished seams. Lastly, this great piece is hit with the Nike Pro badge at center back to let the athlete know its authenticity. Swoosh design trademark at center chest. Body width: 14", Front Body length: 6.5" (size medium).

FABRIC: Body: 88% polyester/12% spandex.

010 Black/(White)	091 Carbon Heather/(White)	100 White/(Cool Grey)
419 Navy/(White)	657 Scarlet/(White)	

DRI-FIT



418642

WMNS S/S POLO II

\$48.00

SIZES: XS, S, M, L, XL, 2XL

OFFER DATE: 06/01/11
END DATE: 06/01/14

Three-button placket short-sleeve polo. Dri-FIT fabric technology for moisture management. Swoosh design trademark at right chest. Body width: 18.5", Body length: 26.25" (size medium).
FABRIC: 90% polyester/10% spandex.

010 Black/(White)	100 White/(Black)	341 Dark Green/(White)
419 Navy/(White)	493 Royal/(White)	610 Cardinal/(White)
657 Scarlet/(White)	669 Dark Maroon/(White)	

DRI-FIT



418643

WMNS L/S POLO II

\$60.00

SIZES: XS, S, M, L, XL, 2XL

OFFER DATE: 06/01/11
END DATE: 06/01/14

Three-button placket long-sleeve polo. Dri-FIT fabric technology for moisture management. Swoosh design trademark at right chest. Body width: 18.5", Body length: 26.25" (size medium).
FABRIC: 90% polyeste/10% spandex.

010 Black/(White)	100 White/(Black)	341 Dark Green/(White)
419 Navy/(White)	493 Royal/(White)	610 Cardinal/(White)
657 Scarlet/(White)	669 Dark Maroon/(White)	

DRI-FIT



337298

WMNS COMMANDER JACKET

\$115.00*

SIZES: S, M, L, XL, 2XL

OFFER DATE: 06/01/09
END DATE: 06/01/12

Stock full-zip woven jacket. Water-resistant. Fabric bonded to fleece with zip-off hood and zippered pockets. Contrast white piping on front and back. Music player zipper pocket on upper right chest. Embroidered Swoosh design trademark at upper right chest. Body width: 20.5", Body length: 25" (size medium).

FABRIC: 100% polyester.

010 Black/(White)	060 Anthracite/(White)	419 Navy/(White)
493 Royal/(White)	610 Cardinal/(White)	657 Scarlet/(White)



379188

WMNS PASADENA II WARM-UP JACKET

\$45.00

SIZES: S, M, L, XL
US Team Sports Fit

OFFER DATE: 06/01/10
END DATE: 01/01/14

Knit long-sleeve full-zip soccer warm-up jacket. Warp knit with 2x2 knit rib at collar, waist, and cuffs. Higher collar height for added warmth, front pockets, music cord management, #3 embroidered Swoosh design trademark at right front. Body width: 20", Body length: 26" (size medium).

FABRIC: Body: 70g. 100% polyester plain warp knit.

012 Black/White/(White)	342 Dark Green/White/(White)	420 Navy/White/(White)
494 Royal/White/(White)	612 Cardinal/White(white)	658 Scarlet/White/(White)

Youth #379149 / S-XL / \$42.00 / Body width: 17", Body length: 21" (size medium)

Y



379189

WMNS PASADENA II WARM-UP PANT

\$35.00

SIZES: S, M, L, XL
US Team Sports Fit

OFFER DATE: 06/01/10
END DATE: 01/01/14

Knit soccer warm-up pant. Warp knit body with contrast side panels, side pockets, elastic waist with drawcord, side leg zippers, #3 embroidered Swoosh design trademark at left front. Hip width: 21.75", Inseam length: 31" (size medium).

FABRIC: Pant: 70g. 100% polyester plain warp knit.

012 Black/White	420 Navy/White
-----------------	----------------

Youth #379150 / S-XL / \$33.00 / Hip width: 17.75", Inseam length: 25.25" (size medium)

Y



399913 | WMNS CLASSIC KNIT JACKET

\$70.00

SIZES: XS, S, M, L, XL
US Team Sports Fit

OFFER DATE: 04/01/11
END DATE: 01/01/14

Full-zip Dri-FIT waffle knit warm-up jacket with mesh underarm insets, higher collar for increased warmth, side front zipper pockets with Nike+ enabled pocket in left front pocket. Contrast piping at front chest and sides. Rib knit cuffs and waistband. Embroidered Swoosh design trademark at upper right front. Body width: 19", Body length: 26" (size medium).

FABRIC: 100% polyester.

012 Black/White/(White)	106 White/Black/(Black)	213 Anthracite/Black/(Black)
342 Dark Green/White/(White)	420 Navy/White/(White)	494 Royal/White/(White)
658 Scarlet/White/(White)		

Youth #399912 / XS-XL / \$60.00 / Body width: 17", Body length: 21" (size medium)

DRI-FIT 



399914 | WMNS CLASSIC KNIT PANT

\$50.00

SIZES: XS, S, M, L, XL
US Team Sports Fit

OFFER DATE: 04/01/11
END DATE: 01/01/14

Dri-FIT waffle knit warm-up pant with mesh back knee panels for increased breathability, contrast piping at sides, side seam pockets, and leg zippers. Embroidered Swoosh design trademark at left front. Hip width: 21.75", Inseam length: 31" (size medium).

FABRIC: 100% polyester.

012 Black/White/(White)	106 White/Black/(Black)	213 Anthracite/Black/(Black)
342 Dark Green/White/(White)	420 Navy/White/(White)	494 Royal/White/(White)
658 Scarlet/White/(White)		

Youth #399915 / XS-XL / \$45.00 / Hip width: 17.75", Inseam length: 25.25" (size medium)

DRI-FIT 



399916 | WMNS CLASSIC KNIT CAPRI

\$40.00

SIZES: XS, S, M, L, XL
US Team Sports Fit

OFFER DATE: 04/01/11
END DATE: 01/01/14

Dri-FIT waffle knit Capri with mesh back knee panels for increased breathability, contrast piping at sides, side seam pockets. Embroidered Swoosh design trademark at left front. Hip width: 21.75", Inseam length: 16" (size medium).

FABRIC: 100% polyester.

012 Black/White/(White)	213 Anthracite/Black/(Black)	420 Navy/White/(White)
-------------------------	------------------------------	------------------------

Youth #399917 / XS-XL / \$38.00 / Hip width: 17.75", Inseam length: 15" (size medium)

DRI-FIT 



379186

WMNS MYSTIFI WARM-UP JACKET

\$65.00*

SIZES: S, M, L, XL
*15% upcharge for MT, LT, XLT, 2XLT
US Team Sports Fit

OFFER DATE: 06/01/10
END DATE: 06/01/14

Knit long-sleeve full-zip soccer warm-up jacket. Dri-FIT double knit piqué with knit-in dot pattern, 2x2 knit rib at collar, waist and cuffs. Higher collar height for added warmth, front pockets with zipper closures, music cord management, #3 embroidered Swoosh design trademark at right front. Body width: 19", Body length: 26" (size medium), Tall Body length: +2.375", Tall Sleeve length: +2.375".

FABRIC: Body: 70g. 100% polyester plain warp knit.

012 Black/White/(White)	342 Dark Green/White/(White)	420 Navy/White/(White)
494 Royal/White/(White)	546 Purple/White/(White)	612 Cardinal/White/(White)
658 Scarlet/White/(White)		

Youth #379147 / S-XL / \$60.00 / Body width: 17", Body length: 21" (size medium)

DRI-FIT 



379187

WMNS MYSTIC II WARM-UP PANT

\$50.00

SIZES: S, M, L, XL
US Team Sports Fit

OFFER DATE: 06/01/10
END DATE: 01/01/14

Knit soccer warm-up pant. Dri-FIT double knit piqué with knit-in dot pattern, 2x2 knit rib waistband with tunneled elastic and drawcord, side pockets with zipper closures, side leg zippers, #3 embroidered Swoosh design trademark at left front. Hip width: 21.75", Inseam length: 31" (size medium).

FABRIC: Pant: 70g. 100% polyester plain warp knit.

012 Black/White/(White)	420 Navy/White/(White)
-------------------------	------------------------

Youth #379148 / S-XL / \$45.00 / Hip width: 17.75", Inseam length: 25.25" (size medium)

DRI-FIT 



361053

WMNS L/S TRAINING TOP

\$65.00

SIZES: S, M, L, XL
US Team Sports Fit

OFFER DATE: 01/01/10
END DATE: 01/01/13

Updated design. Dri-FIT fabric technical hooded training top with four-way mechanical stretch, half-zip front and vented back panels for thermal regulation. Swoosh design trademark on right chest. Body width: 20", Body length: 26" (size medium).

FABRIC: Body: 92% polyester/8% spandex. Insets: 95% polyester/5% spandex.

018	Black/Silver/(Silver)	214	Anthracite/Silver/(Silver)	346	Dark Green/Silver/(Silver)
424	Navy/Silver/(Silver)	499	Royal/Silver/(Silver)	664	Scarlet/Silver/(Silver)

Youth #368983 / S-XL / \$60.00 / Body width: 16.25", Body length: 24" (size medium)

DRI-FIT 



379185

WMNS QUARTER-ZIP PERFORMANCE THERMAL TOP

\$60.00

SIZES: S, M, L, XL
US Team Sports Fit

OFFER DATE: 06/01/10
END DATE: 01/01/13

Long-sleeve fl-zip performance fleece pull-over top. Therma-FIT technical fleece with Dri-FIT mesh underarm and side panels for ventilation. 2x2 knit rib at cuffs for a snug fit. No sew inside music pocket. Contrast top stitching. #3 embroidered Swoosh design trademark at right chest. Body width: 20.5", Body length: 26.75" (size medium).

FABRIC: 100% polyester.

010	Black/(Silver)	060	Anthracite/(Silver)	341	Dark Green/(Silver)
419	Navy/(Silver)	493	Royal/(Silver)	610	Cardinal/(Silver)
657	Scarlet/(Silver)	669	Dark Maroon/(Silver)		

Youth #379146 / S-XL / \$55.00 / Body width: 17", Body length 24" (size medium)

DRI-FIT 



337295

WMNS CLASSIC FLEECE HOODY

\$50.00*

SIZES: XS, S, M, L, XL, 2XL

OFFER DATE: 06/01/09

*15% upcharge for 3XL, ST, MT, LT, XLT, 2XLT

END DATE: 06/01/12

Women's Specific Fit. Long-sleeve fleece hood with "V" at center front neck. Knit rib waistband/side-panel. Embroidered Swoosh design trademark located at upper right chest. Body width: 21.25", Body length: 25.25" (size medium), Tall Body length: +2.375", Tall Sleeve length: +2.375".

FABRIC: Body: 9.6 oz. 80% cotton/20% polyester. Rib: 95% cotton/5% spandex.

010 Black/(White)	075 Sport Grey Heather/(Black)	419 Navy/(White)
493 Royal/(White)	657 Scarlet/(White)	



337296

WMNS CLASSIC FLEECE PANT

\$40.00*

SIZES: XS, S, M, L, XL, 2XL

OFFER DATE: 06/01/09

*15% upcharge for 3XL, ST, MT, LT, XLT, 2XLT

END DATE: 06/01/12

Women's Specific Fit. Fleece pant with embroidered Swoosh design trademark at left hip. Draw-cord waistband for adjustable fit and open bottom hem. Hip width: 21.5", Inseam length: 32" (size medium), Tall Inseam length: +2.375.

FABRIC: Body: 9.6 oz. 80% cotton/20% polyester. Rib: 95% cotton/5% spandex.

010 Black/(White)	075 Sport Grey Heather/(Black)	419 Navy/(White)
493 Royal/(White)	657 Scarlet/(White)	



456246 | WMNS DIGITAL GAME JERSEY 12

\$80.00

SIZES: S, M, L, XL, 2XL
US Team Sports Fit

OFFER DATE: AVAILABLE 365 DAYS/YEAR

3-5 WEEK DELIVERY UPON ARTWORK APPROVAL. Designed for the elite level athlete, fully sublimated short-sleeve game jersey delivers the ultimate in women's soccer uniforms. Dri-FIT flat back mesh provides for high performance jersey. Fully customized with the ability for a unique team name or logo placed at the upper left front or center front, depending on the design choosen. Numbering variations also available. Back name placement options are also available. Body width: 18.75", Body length: 26.75" (size medium). **Exclusive order form required.**

FABRIC: 100% polyester.

Youth #456461 / S-XL / \$75.00 / Body width: 16.75", Body length: 24" (size medium)

NEW DRI-FIT 365 Y



456247 | WMNS L/S DIGITAL GAME JERSEY 12

\$90.00

SIZES: S, M, L, XL, 2XL
US Team Sports Fit

OFFER DATE: AVAILABLE 365 DAYS/YEAR

3-5 WEEK DELIVERY UPON ARTWORK APPROVAL. Designed for the elite level athlete, fully sublimated long-sleeve game jersey delivers the ultimate in women's soccer uniforms. Dri-FIT flat back mesh provides for high performance jersey. Fully customized with the ability for a unique team name or logo placed at the upper left front or center front, depending on the design choosen. Numbering variations also available. Back name placement options are also available. #3 Swoosh design trademark at right chest. Body width: 18.75", Body length: 26.75" (size medium). **Exclusive order form required.**

FABRIC: 100% polyester.

Youth #456462 / S-XL / \$85.00 / Body width: 16.75", Body length: 24" (size medium)

NEW DRI-FIT 365 Y



428812 | WMNS DIGITAL SOCCER GAME SHORT

\$60.00

SIZES: XS, S, M, L, XL
US Team Sports Fit

OFFER DATE: AVAILABLE 365 DAYS/YEAR

3-5 WEEK DELIVERY UPON ARTWORK APPROVAL. New digitally printed and fully sublimated game short delivers the ultimate in women's soccer uniforms. Dri-FIT flat-back mesh provides for a high performance game short. Fully customized jersey with the ability to color block to your teams/clubs needs, as well as the addition of your custom logo or numbers all printed into the short for the best/lightest game ready short available. #3 Swoosh design trademark at left leg. Hip width: 21.75", Inseam length: 4" (size medium). **Exclusive order form required.**

FABRIC: 100% polyester.

Youth #433409 / XS-XL / \$55.00 / Hip width: 19.25", Inseam length: 4" (size medium)

DRI-FIT Y 365



428811 WMNS DIGITAL SOCCER GAME JERSEY**\$80.00**

SIZES: XS, S, M, L, XL
US Team Sports Fit

OFFER DATE: AVAILABLE 365 DAYS/YEAR

3-5 WEEK DELIVERY UPON ARTWORK APPROVAL. New digitally printed and fully sublimated game jersey delivers the ultimate in women's soccer uniforms. Dri-FIT flat-back mesh provides for a high performance game jersey. Fully customized jersey with the ability to color block to your teams/clubs needs, as well as the addition of your custom logo and names and numbers all printed into the jersey for the best/lightest game ready jersey available. 2 designs to choose from: US or Brasil. #3 Swoosh design trademark at right chest. Names, numbers and logo placements available. Body width: 18.75", Body length: 26.75" (size medium). **Exclusive order form required.**

FABRIC: 100% polyester.

Youth #433408 / XS-XL / \$75.00 / Body width: 16.75", Body length: 24" (size medium)

DRI-FIT

**456244 WMNS L/S DIGITAL SOCCER GAME JERSEY****\$90.00**

SIZES: S, M, L, XL, 2XL
US Team Sports Fit

OFFER DATE: AVAILABLE 365 DAYS/YEAR

3-5 WEEK DELIVERY UPON ARTWORK APPROVAL. Fully sublimated jersey delivers the ultimate in women's soccer uniforms. Dri-FIT flat-back mesh provides for a high performance game jersey. Fully customized jersey with the ability to color block to your teams/clubs needs, as well as the addition of your custom logo and names and numbers all printed into the jersey for the best/lightest game ready jersey available. 2 designs to choose from: USA or Brasil. #3 Swoosh design trademark at right chest. Names, numbers and logo placements available. Body width: 18.75", Body length: 26.75" (size medium).

FABRIC: 100% polyester.

Youth #456458 / S-XL / \$85.00 / Body width: 16.75", Body length: 24" (size medium)

DRI-FIT

**428812 WMNS DIGITAL SOCCER GAME SHORT****\$60.00**

SIZES: XS, S, M, L, XL
US Team Sports Fit

OFFER DATE: AVAILABLE 365 DAYS/YEAR

3-5 WEEK DELIVERY UPON ARTWORK APPROVAL. New digitally printed and fully sublimated game short delivers the ultimate in women's soccer uniforms. Dri-FIT flat-back mesh provides for a high performance game short. Fully customized jersey with the ability to color block to your teams/clubs needs, as well as the addition of your custom logo or numbers all printed into the short for the best/lightest game ready short available. #3 Swoosh design trademark at left leg. Hip width: 21.75", Inseam length: 4" (size medium). **Exclusive order form required.**

FABRIC: 100% polyester.

Youth #433409 / XS-XL / \$55.00 / Hip width: 19.25", Inseam length: 4" (size medium)

DRI-FIT



DIGITAL QUICK-TURN UNIFORM OPTIONS



PRIMARY AND SECONDARY COLOR OPTIONS



FONT OPTIONS

A-GOTHIC - 1 or 2 color

ABCDEFGHIJKLMNOPQRSTUVWXYZ

ATHLETIC SHADOW - 2 color

ABCDEFGHIJKLMNOPQRSTUVWXYZ

BOULDER BOLD - 1 or 2 color

ABCDEFGHIJKLMNOPQRSTUVWXYZ

BUREAU - 1 or 2 color

ABCDEFGHIJKLMNOPQRSTUVWXYZ

COUGARS - 1 or 2 color (Cannot be Arched or Vertically Arched)

ABCDEFGHIJKLMNOPQRSTUVWXYZ

DADE BOLD - 1 or 2 color

ABCDEFGHIJKLMNOPQRSTUVWXYZ

FACET BOLD - 1 or 2 color

ABCDEFGHIJKLMNOPQRSTUVWXYZ

FB RUSH - 1 or 2 color

ABCDEFGHIJKLMNOPQRSTUVWXYZ

FB02 CONDENSED - 1 or 2 color

ABCDEFGHIJKLMNOPQRSTUVWXYZ

FULL BLOCK - 1 or 2 color

ABCDEFGHIJKLMNOPQRSTUVWXYZ

GLADES BOLD - 1 or 2 color

ABCDEFGHIJKLMNOPQRSTUVWXYZ

GOTHIC - 1 or 2 color

ABCDEFGHIJKLMNOPQRSTUVWXYZ

ITHACA - 1 or 2 color

ABCDEFGHIJKLMNOPQRSTUVWXYZ

MICHIGAN STATE - 1 or 2 color

ABCDEFGHIJKLMNOPQRSTUVWXYZ

NARROW FULL BLOCK - 1 or 2 color

ABCDEFGHIJKLMNOPQRSTUVWXYZ

SYRACUSE - 1 or 2 color

ABCDEFGHIJKLMNOPQRSTUVWXYZ

TUCSON BOLD - 1 or 2 color

ABCDEFGHIJKLMNOPQRSTUVWXYZ

A-GOTHIC - 1 or 2 color

1234567890

ATHLETIC SHADOW - 2 color

012345012345

BOULDER BOLD - 3 color

1234567890

BUREAU - 1 or 2 color

1234567890

COUGARS - 1 or 2 color

0123456789

DADE BOLD - 1 or 2 color

1234567890

FACET BOLD - 1 or 2 color

1234567890

FB RUSH - 1 or 2 color

1234567890

FB02 CONDENSED - 1 or 2 color

1234567890

FULL BLOCK - 1 or 2 color

1234567890

GLADES BOLD - 1 or 2 color

1234567890

GOTHIC - 1 or 2 color

1234567890

ITHACA - 1 or 2 color

1234567890

MICHIGAN STATE - 1 or 2 color

1234567890

NARROW FULL BLOCK - 1 or 2 color

1234567890

SYRACUSE - 1 or 2 color

012345012345

TUCSON BOLD - 1 or 2 color

1234567890

BLACKSBURG - 3 color

1234567890

GRID IRON BLOCK - 3 color

1234567890

MORGANTOWN BOLD ITALIC - 1 or 2 color

1234567890

*Additional options would include customized logo embellishment, optional player name on back of jersey, go to niketeam.com for all digital quick-turn options.

See Uniform Builder at Niketeam.com or Team representative for order and delivery dates.

456235 WMNS S/S TEAM ID GAME JERSEY

\$50.00



SIZES: S, M, L, XL, 2XL
US Team Sports Fit

OFFER DATE: 01/01/11
END DATE: 01/01/14

New fully sublimated game jersey delivers the ultimate in women's soccer uniforms. Dri-FIT flat-back mesh provides for a high performance game jersey. Fully customized jersey with the ability to color block to your teams/clubs needs, as well as the addition of names and numbers all printed into the jersey for the best/lightest game ready jersey available. 5 designs to choose from: flash, trophy, thin flash, horizontal stripes, or large star. #3 Swoosh design trademark at right chest. Names and number placements available. Body width: 18.75", Body length: 26.75" (size medium). **Exclusive order form required.**

FABRIC: 100% polyester.

Youth #456467 / S-XL / \$45.00 / Body width: 16.75", Body length: 24" (size medium)

NEW DRI-FIT Y



456236 WMNS L/S TEAM ID GAME JERSEY

\$60.00



SIZES: S, M, L, XL, 2XL
US Team Sports Fit

OFFER DATE: 01/01/11
END DATE: 01/01/14

New fully sublimated game jersey delivers the ultimate in Women's soccer uniforms. Dri-FIT flat-back mesh provides for a high performance game jersey. Fully customized jersey with the ability to color block to your teams/clubs needs, as well as the addition of names and numbers all printed into the jersey for the best/lightest game ready jersey available. 5 designs to choose from: flash, trophy, thin flash, horizontal stripes, or large star. #3 Swoosh design trademark at right chest. Names and number placements available. Body width: 18.75", Body length: 26.75" (size medium). **Exclusive order form required.**

FABRIC: 100% polyester.

Youth #456468 / S-XL / \$55.00 / Body width: 16.75", Body length: 24" (size medium)

NEW DRI-FIT Y



456237 WMNS TEAM ID GAME SHORT

\$45.00



SIZES: S, M, L, XL, 2XL
US Team Sports Fit

OFFER DATE: 01/01/11
END DATE: 01/01/14

New fully sublimated game short delivers the ultimate in women's soccer uniforms. Dri-FIT flat-back mesh provides for a high performance game short. The ability to color block to your teams/clubs needs, as well as the addition of numbers all printed into the short for the best/lightest game ready short available. 3 designs to choose from: basic side stripes, flash side stripes or back horizontal stripes. #3 Swoosh design trademark at left leg. Number placements available at right leg. Hip width: 21.75", Inseam length: 4" (size medium). **Exclusive order form required.**

FABRIC: 100% polyester.

Youth #456469 / S-XL / \$40.00 / Hip width: 19.25", Inseam length: 4" (size medium)

NEW DRI-FIT Y



TEAM ID MODIFIED UNIFORM OPTIONS

PRIMARY AND SECONDARY COLOR OPTIONS



LETTER FONT OPTIONS: Height will vary based on team name.

FULL BLOCK - 1 or 2 color

ABCDEFGHIJKLMNOPQRSTUVWXYZ

ATHLETIC SHADOW - 2 color

ABCDEFGHIJKLMNOPQRSTUVWXYZ

TUCSON BOLD - 1 or 2 color

ABCDEFGHIJKLMNOPQRSTUVWXYZ

BOULDER BOLD - 1 or 2 color

ABCDEFGHIJKLMNOPQRSTUVWXYZ

DADE BOLD - 1 or 2 color (Vertical Arch Only)

ABCDEFGHIJKLMNOPQRSTUVWXYZ

GLADES BOLD - 1 or 2 color

ABCDEFGHIJKLMNOPQRSTUVWXYZ

ITHACA - 1 or 2 color

ABCDEFGHIJKLMNOPQRSTUVWXYZ

FB RUSH - 1 or 2 color

ABCDEFGHIJKLMNOPQRSTUVWXYZ

NUMBER FONT OPTIONS: 5" front, 8" back (Adult). *4" front, 7" back (Youth).

FULL BLOCK - 1 or 2 color

012345012345

ATHLETIC SHADOW - 2 color

012345012345

TUCSON BOLD - 1 or 2 color

1234567890

BOULDER BOLD - 3 color

1234567890

DADE BOLD - 1 or 2 color

1234567890

GLADES BOLD - 1 or 2 color

1234567890

GRID IRON BLOCK - 3 color

1234567890

BLACKSBURG - 3 color

1234567890

ITHACA - 1 or 2 color

1234567890

MORGANTOWN BOLD ITALIC - 1 or 2 color

1234567890

FB RUSH - 1 or 2 color

1234567890

*Adult and Youth combined orders will receive the youth embellishment.

456238 S/S CLASSIC IV JERSEY**\$60.00**

SIZES: S, M, L, XL, 2XL
Global Soccer Fit

OFFER DATE: 01/01/12
END DATE: 01/01/15

Teams can customize the jerseys color blocking for a unique and functional new uniform. Body width: 18.75", Body length: 26.75" (size medium).

FABRIC: 100% polyester.

Youth #456470 / S-XL / \$55.00 / Body width: 16.75", Body length: 24" (size medium)

NEW DRI-FIT **Y**

456239 L/S CLASSIC IV JERSEY**\$65.00**

SIZES: S, M, L, XL, 2XL
Global Soccer Fit

OFFER DATE: 01/01/12
END DATE: 01/01/15

Teams can customize the jerseys color blocking for a unique and functional new uniform. Body width: 18.75", Body length: 26.75" (size medium).

FABRIC: 100% polyester.

Youth #456471 / S-XL / \$60.00 / Body width: 16.75", Body length: 24" (size medium)

NEW DRI-FIT **Y**

456240 CLASSIC IV WOVEN SHORT**\$40.00**

SIZES: S, M, L, XL, 2XL
Global Soccer Fit

OFFER DATE: 01/01/12
END DATE: 01/01/15

4cm wide fold over, elasticated waistband, 3cm deep split to hem. Embroidered Swoosh design trademark, Dri-FIT embroidery. Teams can customize the shorts color blocking for a unique and functional new uniform. Hip width: 21.75", Inseam length: 4" (size medium).

FABRIC: 100% polyester.

Youth #456472 / S-XL / \$35.00 / Hip width: 19.25", Inseam length: 4" (size medium)

NEW DRI-FIT **Y**

**CUT & SEW MODIFIED UNIFORM OPTIONS****COLOR OPTIONS****FONT OPTIONS**

FULL BLOCK - 1 or 2 color

A B C D E F G H I J K L M N O P Q R S T U V W X Y Z

FULL BLOCK - 1 or 2 color

0 1 2 3 4 5 0 1 2 3 4 5

See Uniform Builder at Niketeam.com or Team representative for order and delivery dates.



456241 S/S HERTHA JERSEY

\$40.00



SIZES: S, M, L, XL, 2XL
Global Soccer Fit

OFFER DATE: 01/01/12
END DATE: 01/01/15

Self fabric v-neck (cross-over), forward shoulder seam, self fabric cut and sew contrast chest band, straight hem with twin needle stitch. Embroidered Swoosh design trademark, jocktag, Dri-FIT embroidery. Teams can customize the jerseys color blocking for a unique and functional new uniform. Body width: 18.75", Body length: 26.75" (size medium).

FABRIC: 100% polyester.

Youth #456473 / S-XL / \$35.00 / Body width: 16.75", Body length: 24" (size medium)

NEW DRI-FIT

456242 L/S HERTHA JERSEY

\$45.00



SIZES: S, M, L, XL, 2XL
Global Soccer Fit

OFFER DATE: 01/01/12
END DATE: 01/01/15

Self fabric v-neck (cross-over), forward shoulder seam, self fabric cut and sew contrast chest band, straight hem with twin needle stitch. Embroidered Swoosh design trademark, jock tag, Dri-FIT embroidery. Teams can customize the jerseys color blocking for a unique and functional new uniform. Body width: 18.75", Body length: 26.75" (size medium).

FABRIC: 100% polyester.

Youth #456474 / S-XL / \$40.00 / Body width: 16.75", Body length: 24" (size medium)

NEW DRI-FIT

483432 HERTHA KNIT SHORT

\$30.00



SIZES: S, M, L, XL, 2XL
Global Soccer Fit

OFFER DATE: 01/01/12
END DATE: 01/01/15

4cm wide fold over elasticated waistband, 12cm wide mesh gusset, 4cm deep mesh panel 2cm wide self fabric contrast cut and sew. Embroidered Swoosh design trademark, embroidered Dri-FIT logo. Teams can customize the shorts color blocking for a unique and functional new uniform. Hip width: 21.75", Inseam length: 4" (size medium).

FABRIC: 100% polyester.

Youth #456475 / S-XL / \$25.00 / Hip width: 19.25", Inseam length: 3.75" (size medium)

NEW DRI-FIT



CUT & SEW MODIFIED UNIFORM OPTIONS

COLOR OPTIONS



FONT OPTIONS

FULL BLOCK - 1 or 2 color

ABCDEFGHIJKLMNOPQRSTUVWXYZ

FULL BLOCK - 1 or 2 color

012345012345

See Uniform Builder at Niketeam.com or Team representative for order and delivery dates.



389790 | WMNS S/S C&S BRASILIA JERSEY

\$50.00



SIZES: S, M, L, XL
US Team Sports Fit

OFFER DATE: 06/01/10
END DATE: 01/01/14

Dri-FIT fabric short-sleeve crewneck soccer jersey. No distractions seaming. Teams can customize the jerseys color blocking for a unique and functional new uniform. #3 Swoosh design trademark at upper right chest. Nike Team Sports jock tag at lower left front. Body width: 18.75", Body length: 26.75" (size medium).

FABRIC: 100% polyester.

Women's L/S #415930 / S-XL / \$55.00 / Body width: 18.75", Body length: 26.75" (size medium)

Youth S/S #389784 / S-XL / \$45.00 / Body width: 16.75", Body length: 24" (size medium)

Youth L/S #415927 / S-XL / \$50.00 / Body width: 16.75", Body length: 24" (size medium)

DRI-FIT MOD Y



389791 | WMNS C&S BRASILIA SHORT

\$35.00



SIZES: S, M, L, XL
US Team Sports Fit

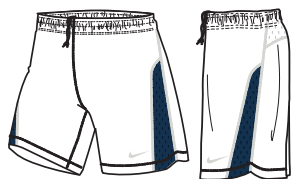
OFFER DATE: 06/01/10
END DATE: 01/01/14

Dri-FIT fabric longer length soccer game short. No distractions seaming. Teams can customize the shorts color blocking for a unique and functional new uniform. #3 Swoosh design trademark at left front. Hip width: 21.75", Inseam length: 5" (size medium).

FABRIC: 100% polyester.

Youth #389785 / S-XL / \$30.00 / Hip width: 19.25", Inseam length: 4" (size medium)

DRI-FIT MOD Y



CUT & SEW MODIFIED UNIFORM OPTIONS

COLOR OPTIONS



FONT OPTIONS

FULL BLOCK - 1 or 2 color

ABCDEFGHIJKLMNOPQRSTUVWXYZ

FULL BLOCK - 1 or 2 color

012345012345

See Uniform Builder at Niketeam.com or Team representative for order and delivery dates.





488131 | WMNS CTR360 MAESTRI II FG \$190.00

SIZES: 6.5-12, 13 **OFFER DATE:** 1/1

Control and passing pace are key to winning games. This boot delivers both with a technical yet familiar aesthetic. For use on firm natural surfaces.

UPPER: Kanga-Lite synthetic leather combined with some innovative built-in features deliver maximum ball control and optimal passing-pace.

MIDSOLE: High performance, molded sockliner with Poron® low-profile cushioning delivers great under the foot comfort.

OUTSOLE: Innovative dual-density forefoot to allow an enhanced ball to cleat interface, unique cleat geometry for maximum traction and stability.

018 Black/White-Bright Mango

NEW



488132 | WMNS CTR360 TREQUARTISTA II FG \$95.00

SIZES: 6.5-12, 13 **OFFER DATE:** 1/1

Ball control and passing pace are key to winning games. This boot delivers both with a technical yet familiar aesthetic. For use on firm natural surfaces.

UPPER: Ultra-soft, lightweight synthetic leather forefoot for superior ball feel. Innovative built-in features deliver maximum ball control and optimal passing.

MIDSOLE: Performance molded EVA sockliner with textile top cloth.

OUTSOLE: Unique cleat geometry for maximum traction and stability.

018 Black/White-Bright Mango

NEW



452356 | WMNS MERCURIAL GLIDE II FG \$85.00

SIZES: 5.5-12, 13 **OFFER DATE:** 1/1

A lightweight performance boot for use on firm natural surfaces.

UPPER: Soft, supple Teijin synthetic leather for supreme ball feel. Contoured speed last mirrors the foot shape. Lace cover increases ball contact area.

MIDSOLE: Contoured molded sockliner.

OUTSOLE: Innovative Vapor traction islands. Lightweight TPU bladed studs configuration provides instant acceleration.

144 White/Obsidian-Neptune Blue

NEW



453961 | WMNS TIEMPO FLIGHT FG \$110.00

SIZES: 5.5-12, 13 **OFFER DATE:** C/O

Performance level boot offering a lightweight crafted product for the serious player. For use on firm ground surfaces.

UPPER: Newly developed soft calf leather for superior comfort and ball feel.

MIDSOLE: High performance molded sockliner with Poron cushioning delivers great under the foot comfort.

OUTSOLE: Lightweight TPU with multidirectional forefoot flexibility to improve the foot's natural cutting motion. Conical/bladed stud design for optimal traction and durability.

016 Black/White-Solar Red



454118 | WMNS TIEMPO MYSTIC IV FG \$70.00

SIZES: 5.5-12, 13 **OFFER DATE:** C/O

Core level boot offering the natural leather comfort and performance for the player. For use on firm ground surfaces.

UPPER: Soft, full-grain leather for comfort and touch.

MIDSOLE: High-density, recycled EVA sockliner.

OUTSOLE: Lightweight TPU plate with combination conical and bladed studs.

016 Black/White-Solar Red

419167 | DRI-FIT COMPRESSION SOCK (UNISEX) | \$20.00

SIZES: S, M, L, XL
Global Soccer Fit

OFFER DATE: 01/01/12
END DATE: 01/01/14

Sold in pre-packs of six.

FABRIC:

010 Black/(White)	100 White/(Black)	104 White/(Royal Blue)
302 Pine Green/(White)	410 Midnight Navy/(White)	463 Royal Blue/(White)
648 Varsity Red/(White)	703 Varsity Maize/(Black)	

NEW DRI-FIT



413309 | BRASIL III SOCK (UNISEX) | \$16.00

SIZES: S, M, L

OFFER DATE: 06/01/10
END DATE: 01/01/14

Sold in pre-packs of six.

FABRIC: 88% nylon/9% polyester/3% spandex.

012 Black/White/(Black)	106 White/Black/(Black)	107 White/Navy/(Navy)
108 White/Royal/(Royal)	109 White/Scarlet/(Scarlet)	111 White/Dark Green/(Dark Green)
342 Dark Green/White/(White)	420 Navy/White/(White)	494 Royal/White/(White)
658 Scarlet/White/(White)		



399897

VAPOR SOCK (UNISEX)

\$12.00

SIZES: S, M, L

OFFER DATE: 06/01/10
END DATE: 01/01/14

Sold in pre-packs of six.
FABRIC: 89% nylon/8% polyester/3% spandex.

012 Black/White/(White)	013 Black/University Red/(University Red)	104 White/Team Maroon/(Team Maroon)
106 White/Black/(Black)	107 White/College Navy/(College Navy)	108 White/Game Royal/(Game Royal)
109 White/University Red/(University Red)	111 White/Gorge Green/(Gorge Green)	342 Gorge Green/White/(White)
420 College Navy/White/(White)	494 Game Royal/White/(White)	498 Game Royal/Univ Gold/(Univ Gold)
612 Team Maroon/White/(White)	658 University Red/White/(White)	



394386

CLASSIC III SOCK (UNISEX)

\$10.00

SIZES: S, M, L

OFFER DATE: 06/01/10
END DATE: 01/01/14

Sold in pre-packs of six.
FABRIC: 93% nylon/6% polyester/1% spandex.

010 Black/(White)	057 Grey/(Black)	100 White/(Black)
323 Gorge Green/(White)	410 College Navy/(White)	448 Valor Blue/(White)
460 Game Royal/(White)	545 Court Purple/(White)	648 University Red/(White)
677 Team Maroon/(White)	750 University Gold/(White)	888 University Orange/(White)



394385

PARK III SOCK (UNISEX)

\$6.00

SIZES: S, M, L

OFFER DATE: 06/01/10

Sold in pre-packs of six.
FABRIC: 95% polyester/5% spandex.

010 Black/(White)	100 White/(Black)	323 Gorge Green/(White)
410 College Navy/(White)	448 Valor Blue/(White)	460 Game Royal/(White)
545 Court Purple/(White)	648 University Red/(White)	667 Shy Pink/(Black)
677 Team Maroon/(White)	750 University Gold/(White)	888 University Orange/(White)





SC1912 NIKE AG ELITE \$75.00

SIZES: 5 OFFER DATE: C/O

DESIGN: Advanced Panel Geometry distributes pressure more evenly all around the ball to create a 360 sweet spot

GRAPHIC: Asymmetrical graphic pattern allows for better judgment of ball flight

CASING: Hand-stitched high-quality PU • Soft, High-Performance Casing for exceptional feel and performance • Stain-Resistant Casing maintains bright white appearance longer, and doesn't attract gray film from turf substrate

WARRANTY: 2 year stitch and shape guarantee

130 White/Black/(Green)



SC1921 NIKE CATALYST TEAM \$75.00

SIZES: 5 OFFER DATE: C/O

DESIGN: Geometric Precision distributes pressure evenly across panels and around the ball for a consistent, accurate and powerful strike no matter where it's hit • Perfect Sphericity allows the ball to fly faster, farther, and more accurately

GRAPHIC: Asymmetrical High-Contrast Graphic creates an optimal flicker as the ball rotates for a more powerful visual signal allowing the player to more easily identify and track the ball

CASING: Premium PU casing for exceptional touch and feel

BLADDER: 6-wing carbon-latex air chamber for explosive acceleration

WARRANTY: 2 year stitch and shape guarantee

129 White/Gold/(Black)



SC1910 NIKE PREMIER TEAM NFHS \$40.00

SIZES: 4, 5 OFFER DATE: C/O

DESIGN: Geo Balanced Technology allows for truer and more accurate flight

GRAPHIC: Asymmetrical High-Contrast Graphic creates an optimal flicker as the ball rotates for a more powerful visual signal allowing the player to more easily identify and track the ball

CASING: Hand-stitched high-quality PU

BLADDER: 6-wing latex bladder for strong rebound qualities and superior air retention

WARRANTY: 2 year stitch and shape guarantee

129 White/Gold/(Black)



SC1906 NIKE CLUB TEAM \$30.00

SIZES: 3, 4, 5 OFFER DATE: C/O

DESIGN: Geo Balanced Technology for truer flight

GRAPHIC: Asymmetrical High-Contrast Graphic creates an optimal flicker as the ball rotates for a more powerful visual signal allowing the player to more easily identify and track the ball

CASING: Hand-stitched, grained PU for craftsmanship and durability

BLADDER: Butyl bladder for strong rebound and shape-retention qualities

WARRANTY: 2 year stitch and shape guarantee

170 White/Bronze/(Black)



SP0239 MERCURIAL LIGHTSPEED \$50.00

SIZES: S, M, L, XL OFFER DATE: C/O

071 Black/Volt/(White)



SP0240 MERCURIAL LITE \$20.00

SIZES: S, M, L, XL OFFER DATE: C/O

DESIGN: Low-Profile Construction provides protection while not distracting the athlete

BACKER: The Durable Low-Profile Shell is bonded to a dense foam backing for excellent impact diffusion and comfort against the skin

SLEEVE: NikeFIT Dry Fabric Sleeves are highly breathable and lightweight, designed to hold the guard secure against the shin

FIT: Anatomical left and right design is engineered and tested to fit the contour of the leg

162 White/Red/(Black)

008 Black/Orange/(White)





GS0238 NIKE GK VAPOR GRIP3 \$110.00

SIZES: 7, 8, 9, 10, 11 **OFFER DATE:** C/O

WRIST: Wraparound Wristband provides an easy adjustment and a comfortable fit

BACKHAND: Ventilated Mesh allows for cool airflow in between the fingers and provides a brow wipe

GRIP: 4 mm Contact Foam absorbs shot impact and enhances grip

DESIGN: Patented Grip3 Technology Wrapped thumb, forefinger and pinky for enhanced control.

140 White/Blue/(Black)



GS0236 NIKE GK GUNN CUT \$90.00

SIZES: 7, 8, 9, 10, 11 **OFFER DATE:** C/O

WRIST: Flexible Fit Wraparound Tunnel Wristband for a comfortable fit that is easy to adjust

GRIP: Extended 4 mm Contact Foam Palm absorbs shot impact and offers superior grip and control in all conditions

DESIGN: Pre-Curved Fingers positions the hands in a catch-ready position. Gunn Cut Construction with rolled foam fingers for better grip and feel.

140 White/Blue/(Black)



GS0230 NIKE GK SPYNE PRO \$70.00

SIZES: 7, 8, 9, 10, 11 **OFFER DATE:** C/O

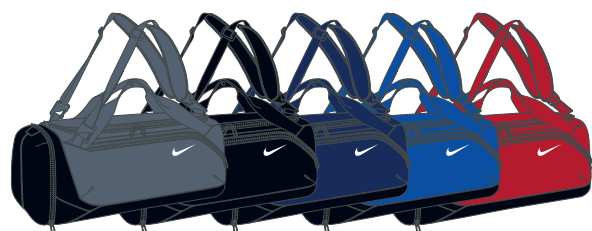
WRIST: Wraparound Wristband for a comfortable fit that is easy to adjust

GRIP: 3 mm Super-Soft Latex Foam absorbs shot impact and enhances grip

DESIGN: Pre-Curved Bio-Align Technology positions the hands in a catch-ready position, and reduces stress on the hands

PROTECTION: T90 Spyne Finger Supports for enhanced shot-blocking and stability

140 White/Blue/(Black)



BA3211 ELITE UTILITY DUFFEL \$55.00

SIZES: MISC **OFFER DATE:** C/O

Water-resistant Tarpaulin bottom • Tough 600D polyester • Tri-carry strap system: Carry as a backpack, duffel, or cross-body • Ergonomic, wrap-around fit • Separated shoe or wet/dry storage • Separated shoe compartment • Wet/dry separation • Water-resistant Tarpaulin

DIMENSIONS: 25" L x 13" W x 11" H inch/2867 cu. in.

001 Flint Grey/Flint Grey/(White)	067 Black/Black/(White)
423 Midnight Navy/Midnight Navy/(White)	479 Varsity Royal/Black/(White)
661 Varsity Red/Varsity Red/(White)	



BA3253 TEAM SALES NUTMEG BACKPACK - MEDIUM \$40.00

SIZES: MISC **OFFER DATE:** 6/1

• Tough 600D polyester • Water-resistant Tarpaulin bottom • Padded shoulder straps • Padded backpanel • Ventilated shoe pocket • Ball carry up to size 4 • Wet/dry separation • Water-resistant Tarpaulin • Room for all your tournament, match or training gear • Screened Swoosh design trademark

DIMENSIONS: 19" H x 15" W x 10" D / 1952 cu. in.

067 Black/Black/(White)	074 Flint Grey/Black/(White)
472 Midnight Navy/Black/(White)	479 Varsity Royal/Black/(White)
624 Varsity Red/Black/(White)	



BA3251 CLUB TEAM MEDIUM DUFFEL \$30.00

SIZES: MISC **OFFER DATE:** 7/1

Water-resistant Tarpaulin bottom • Tough 600D polyester • Adjustable, padded shoulder strap • Detachable shoulder strap • Separated shoe compartment • Small valuables pocket

DIMENSIONS: 23" L x 12" W x 11.5" H inch/3355 cu. in.

067 Black/Black/(White)	074 Flint Grey/Black/(White)
472 Midnight Navy/Black/(White)	479 Royal/Black/(White)
624 Varsity Red/Black/(White)	



BA3256	NIKE CLUB TEAM ROLLER BAG	\$90.00
---------------	----------------------------------	----------------

SIZES: MISC	OFFER DATE: C/O
Screened Swoosh design trademark	
DIMENSIONS: 34" L x 16" W x 15" H / 7203 cu. in.	
067 Black/Black/(White)	



BA4223	TEAM EQUIPMENT BALL BAG	\$35.00
---------------	--------------------------------	----------------

SIZES: MISC	OFFER DATE: C/O
Neoprene • 600D polyester • Adjustable shoulder straps / Customized fit	
• Interior Mesh Pocket / Breathable Storage • Interior pockets / Securely stores personal items • Drawstring closure / Easy access to contents	
• Screened Swoosh design trademark	
DIMENSIONS: 20" W x 35" H x 20" D / 6711 cu. in.	
067 Black/Black/(White)	

This image shows a single sheet of white paper with horizontal ruling lines. The lines are evenly spaced and run across the width of the page. There are no margins, text, or other markings on the paper.



Printed on recycled paper containing
30% post consumer waste.



MIX
Paper from
responsible sources
FSC® C001643

06/11 5K GAC - SPRING 2012 NIKE TEAM SOCCER
© Nike, Inc. 2011. All rights reserved.
Price: Suggested Retail

Team Customer Service: 1-877-235-6453

Fax: (503) 532-6708

Customer Affairs: 1-800-344-6453