



WOMEN'S FAST PITCH





WOMEN'S FAST PITCH

- 1 FULL BUTTON S/S JERSEY**
453381 \$55 PAGE 18
- 2 ALL OUT 3/4 PANT**
453382 \$55 PAGE 18
- 3 CLASSIC III SOCK**
394386 \$10
- 4 WMNS NIKE AIR UNIFY PRO**
415177 \$70 PAGE 28

453380

STOCK FULL BUTTON S/S JERSEY

\$50.00*

SIZES: XS, S, M, L, XL, 2XL

OFFER DATE: 12/01/11

*15% upcharge for 3XL

END DATE: 12/01/14

Poly warp knit full button short-sleeve game jersey. Knit mesh under arms for added breathability. Embroidered Swoosh design trademark upper left chest. Nike Team Sports jock tag at lower left hem. Body width: 19.5", Body length: 29" (size medium).

FABRIC: Body: 100% polyester. Insets: 84% polyester/16% spandex.

012 Black/White/(White)	043 Blue Grey/White/(Black)	100 White/White/(Black)
342 Dark Green/White/(White)	420 Navy/White/(White)	494 Royal/White/(White)
612 Cardinal/White/(White)	658 Scarlet/White/(White)	670 Dark Maroon/White/(White)



453383

STOCK ALL OUT 3/4 PANT

\$50.00

SIZES: S, M, L, XL, 2XL

OFFER DATE: 12/01/11

END DATE: 12/01/14

Poly warp knit fast pitch pant with over-the-knee length. Gripper at leg opening to lock sock and pant in place for proper fit. Rocked side seam placement for comfort in pitch and slide. 5 belt loop system, 2 button snap and brass zipper front closure. Reinforced, double-layer knee for durability. 2 back welt pockets to reduce bulk and weight. Gripper elastic waistband. Embroidered Swoosh design trademark at upper left hip. Hip width: 21.25", Inseam length: 18.75" (size medium).

FABRIC: 100% polyester.

010 Black/(White)	052 Blue Grey/(Black)	100 White/(Black)
419 Navy/(White)	657 Scarlet/(White)	



359740 | PROSPECT S/S JERSEY **\$35.00**

SIZES: XS, S, M, L, XL, 2XL **OFFER DATE:** 12/01/09
END DATE: 12/01/12

Dri-FIT poly knit short-sleeve game jersey. Dri-FIT mesh side panel inserts and mesh inserts on front and back shoulder. Contrast stitching along the front and back side seams of jersey and around arm hole shoulder area. Nike Team Sports jock tag at lower left hem. Swoosh design trademark on upper right chest. Body width: 18.5", Body length: 26.75" (size medium).

FABRIC: 100% Dri-FIT polyester.

051 Grey/White/(Black)	012 Black/White/(White)	100 White/White/(Black)
342 Dark Green/White/(White)	420 Navy/White/(White)	453 Light Blue/White/(White)
494 Royal/White/(White)	546 Purple/White/(White)	612 Cardinal/Cardinal/(White)
658 Scarlet/White/(White)	821 Orange/White/(White)	

DRI-FIT



359925 | PROSPECT SHORT **\$25.00**

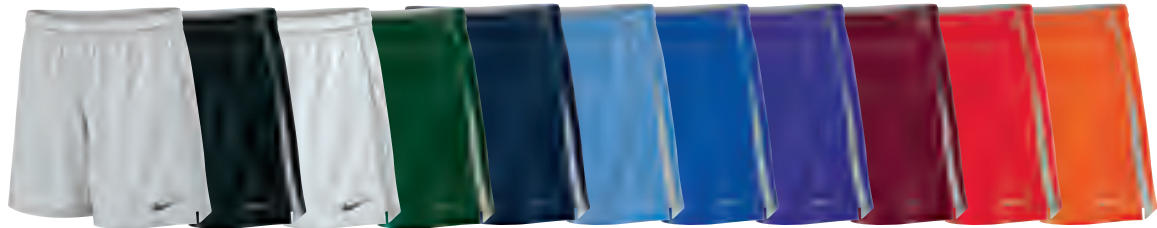
SIZES: XS, S, M, L, XL, 2XL **OFFER DATE:** 12/01/09
END DATE: 12/01/12

Dri-FIT knit game short with contrast Dri-FIT mesh side insets. Gripper elastic waistband with drawcord for adjustability. Swoosh design trademark at lower left hem. Hip width: 22.25" (size medium), Inseam length: 7" (all sizes).

FABRIC: 100% Dri-FIT polyester.

051 Grey/White/(Black)	012 Black/White/(White)	100 White/White/(Black)
342 Dark Green/White/(White)	420 Navy/White/(White)	453 Light Blue/White/(White)
494 Royal/White/(White)	546 Purple/White/(White)	612 Cardinal/White/(White)
658 Scarlet/White/(White)	821 Orange/White/(White)	

DRI-FIT



359741

ELITE RACER-BACK GAME JERSEY

\$40.00

SIZES: XS, S, M, L, XL, 2XL

OFFER DATE: 12/01/09
END DATE: 12/01/12

Racer-back V-neck game jersey. Poly spandex body with a back mesh panel to allow breathability for the athlete during competition. Contrast side vented insets. Nike Team Sports jock tag at lower left hem. Swoosh design trademark at upper right chest. Body width: 17.5", Body length: 24.75" (size medium).

FABRIC: 92% polyester/8% spandex.

012 Black/White/(White)	100 White/White/(Black)	342 Dark Green/White/(White)
420 Navy/White/(White)	494 Royal/White/(White)	546 Purple/White/(White)
612 Cardinal/White/(White)	658 Scarlet/White/(White)	

359923

ELITE SHORT

\$35.00

SIZES: XS, S, M, L, XL, 2XL

OFFER DATE: 12/01/09
END DATE: 12/01/12

Dri-FIT poly piqué game short. Contrast side vented inset. Brushed elastic waistband with draw-cord providing comfort to the athlete while on field. Swoosh design trademark on lower left hem. Hip width: 22.25" (size medium), Inseam length: 5" (all sizes).

FABRIC: 100% polyester.

012 Black/White/(White)	100 White/White/(Black)	342 Dark Green/White/(White)
420 Navy/White/(White)	494 Royal/White/(White)	546 Purple/White/(White)
612 Cardinal/White/(White)	658 Scarlet/White/(White)	



359728

NIKE TEAM USA FAST PITCH JERSEY

\$45.00

SIZES: XS, S, M, L, XL, 2XL

OFFER DATE: 12/01/09
END DATE: 12/01/12

A light weight Dri-FIT piqué fabric providing a smooth comfort feel for the fast pitch athlete while on the diamond. Contrast sleeves and back mesh inset for breathability. Nike Team Sports jock tag at lower left hem. Swoosh design trademark at upper right chest. Body width: 20.5", Body length: 29" (size medium).

FABRIC: 100% polyester.

012 Black/White/(White)	100 White/White/(Black)	342 Dark Green/White/(White)
420 Navy/White/(White)	494 Royal/White/(White)	546 Purple/White/(White)
612 Cardinal/White/(White)	658 Scarlet/White/(White)	

DRI-FIT



359729

NIKE TEAM USA FAST PITCH SHORT

\$40.00

SIZES: XS, S, M, L, XL, 2XL

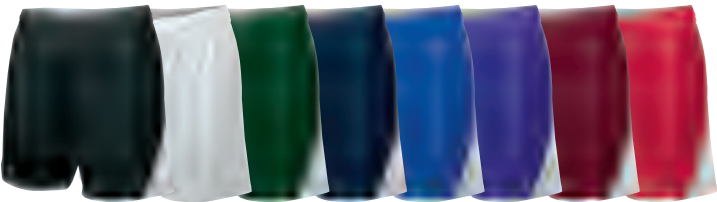
OFFER DATE: 12/01/09
END DATE: 12/01/12

Lightweight Dri-FIT piqué fabric. Contrast bottom hem trim and small contrast pop on short side panels. 2" gripper elastic waistband with drawcord for adjustability and fit. Swoosh design trademark at lower right thigh. Hip width: 22.25" (size medium), Inseam length: 6.75" (all sizes).

FABRIC: 100% polyester.

012 Black/White/(White)	100 White/White/(Black)	342 Dark Green/White/(White)
420 Navy/White/(White)	494 Royal/White/(White)	546 Purple/White/(White)
612 Cardinal/White/(White)	658 Scarlet/White/(White)	

DRI-FIT



299423

STEALTH FAST PITCH JERSEY

\$40.00

SIZES: XS, S, M, L, XL, 2XL

OFFER DATE: 12/01/08
END DATE: 12/01/12

Lightweight Dri-FIT fabric jersey with mesh insets at side panels and upper back for ventilation. Unique embossed design on both sleeves. Contrast white piping along shoulders and side panels. Contrast white insets at neck. Swoosh design trademark at left sleeve. Body width: 20.5", Body length: 27" (size medium).

FABRIC: 100% polyester.

011 Silver/White/(Black)	012 Black/White/(White)	100 White/White/(Black)
342 Dark Green/White/(White)	420 Navy/White/(White)	494 Royal/White/(White)
612 Cardinal/White/(White)	658 Scarlet/White/(White)	

DRI-FIT



299422

STEALTH FAST PITCH PANT

\$45.00

SIZES: XS, S, M, L, XL, 2XL

OFFER DATE: 12/01/08
END DATE: 12/01/12

Fast pitch specific fit with over-the-knee pant length. Gripper at leg opening to lock sock and pant in place for proper fit. Rocked side seam placement for comfort in pitch and slide. Mesh insets at sides for ventilation. Reinforced, double-layer knee for durability. White contrast piping along side seams and back panel. Mesh pockets hidden in back piping seam to reduce bulk and weight. Gripper elastic and drawcord waistband. Swoosh design trademark at upper left hip. Hip width: 19.5", Inseam length: 18.75" (size medium).

FABRIC: 100% polyester.

012 Black/White/(White)	043 Blue Grey/White/(White)	100 White/White/(Black)
420 Navy/White/(White)	657 Scarlet/White/(White)	



399217

CORE 3/4 FAST PITCH PANT

\$25.00

SIZES: S, M, L, XL, 2XL

OFFER DATE: 12/01/10
END DATE: 12/01/13

Poly warp knit 3/4 length fast pitch pant with reinforced knees for durability, gripper elastic waistband with a draw cord for adjustability, two back welt pockets and gripper elastic at bottom pant hem. Embroidered Swoosh design trademark at upper left hip. Hip width: 20.5", Inseam length: 18.75" (size medium).

FABRIC: 100% polyester.

010 Black/(White)	052 Blue Grey/(Black)	100 White/(Black)
419 Navy/(White)	657 Scarlet/(White)	

Youth #399218 / S-XL / \$20.00 / Hip width: 16.5", Inseam length: 15.25" (size medium)

Y



MOD FULL-BUTTON S/S JERSEY

See below*



SIZES: XS, S, M, L, XL, 2XL

OFFER DATE: 12/01/11
END DATE: 12/01/14

Poly warp knit full button short-sleeve game jersey. Knit mesh under arms for added breathability. Embroidered Swoosh design trademark upper left chest. Nike team sports jock tag at lower left hem. Body width: 19.5", Body length: 29" (size medium).

FABRIC: Body: 100% polyester. Mesh: 86% polyester/14% spandex.

453381	Blank	\$55.00*
269941	One-Color Twill Name/Number Split Front	\$100.00*
269942	Two-Color Twill Name/Number Split Front	\$125.00*
436077	One-Color Lightweight Twill Split Front	\$125.00*
436078	Two-Color Lightweight Twill Split Front	\$135.00*
269945	Arm Cuff - Braid/Piping	\$10.00*
269946	Neck/Placket - Braid/Piping	\$30.00*



MOD ALL OUT 3/4 PANT

See below*



SIZES: XS, S, M, L, XL, 2XL

OFFER DATE: 12/01/11
END DATE: 12/01/14

Poly warp knit fast pitch pant with over-the-knee length. Gripper at leg opening to lock sock and pant in place for proper fit. Rocked side seam placement for comfort in pitch and slide. 5 belt loop system, 2 button snap and brass zipper front closure. Reinforced, double-layer knee for durability. 2 back welt pockets to reduce bulk and weight. Gripper elastic waistband. Embroidered Swoosh design trademark at upper left hip. Hip width: 21.25", Inseam length: 18.75" (size medium).

FABRIC: 100% polyester.

453382	Blank	\$55.00*
269947	Braid/Piping	\$14.00*



ELITE S/S JERSEY

See below*



SIZES: XS, S, M, L, XL, 2XL
*15% upcharge for 3XL

OFFER DATE: 12/01/09
END DATE: 12/01/12

Poly spandex short-sleeve game jersey with a back mesh panel to allow breathability for the athlete during competition. Contrast vented side insets and contrast neck trim. Nike Team Sports jock tag at lower left hem. Swoosh design trademark at upper right chest. Body width: 18", Body length: 24.75" (size medium).

FABRIC: 92% polyester/8% spandex.

359743	Blank	\$45.00*
330089	One-Color Twill	\$71.00*
330090	Two-Color Twill	\$81.00*
359555	One-Color Screen Print	\$61.00*
359556	Two-Color Screen Print	\$71.00*
409637	One-Color Lightweight Stretch Twill	\$81.00*
409638	Two-Color Lightweight Stretch Twill	\$89.00*
456533	Sublimated Standard Twill	\$75.00*
456047	Sublimated Lightweight Stretch Twill	\$85.00*



ELITE RACER-BACK JERSEY

See below*



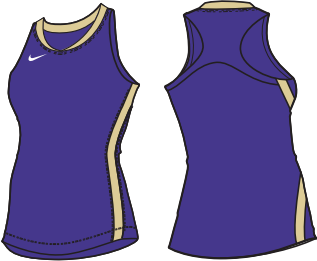
SIZES: XS, S, M, L, XL, 2XL
*15% upcharge for 3XL

OFFER DATE: 12/01/09
END DATE: 12/01/12

Racer-back V-neck game jersey. Poly spandex body with a back mesh panel to allow breathability for the athlete during competition. Contrast vented side insets and contrast neck trim. Nike Team Sports jock tag at lower left hem. Swoosh design trademark at upper right chest. Body width: 17.5", Body length: 24.75" (size medium).

FABRIC: 92% polyester/8% spandex.

359744	Blank	\$45.00*
330089	One-Color Twill	\$71.00*
330090	Two-Color Twill	\$81.00*
359555	One-Color Screen Print	\$61.00*
359556	Two-Color Screen Print	\$71.00*
409637	One-Color Lightweight Stretch Twill	\$81.00*
409638	Two-Color Lightweight Stretch Twill	\$89.00*
456533	Sublimated Standard Twill	\$75.00*
456047	Sublimated Lightweight Stretch Twill	\$85.00*



360097 ELITE SHORT

\$40.00*



SIZES: XS, S, M, L, XL, 2XL
*15% upcharge for 3XL

OFFER DATE: 12/01/09
END DATE: 12/01/12

Dri-FIT poly piqué game short. Contrast side vented inset. Brushed elastic waistband with drawcord providing comfort to the athlete while on field. Swoosh design trademark on lower left hem. Hip width: 22.25" (size medium), Inseam length: 5" (all sizes).

FABRIC: 100% polyester.



NIKE TEAM USA FAST PITCH JERSEY

See below*

SIZES: XS, S, M, L, XL, 2XL

OFFER DATE: 12/01/09
END DATE: 12/01/12

A lightweight Dri-FIT piqué fabric providing a smooth comfort feel for the fast pitch athlete while on the diamond. Contrast sleeves and back mesh inset for breathability. Nike Team Sports jock tag at lower left hem. Swoosh design trademark at upper right chest. Body width: 20.5", Body length: 29" (size medium).

FABRIC: 100% polyester.

359732	Blank	\$50.00*
359555	One-Color Screen Print	\$16.00*
359556	Two-Color Screen Print	\$26.00*
330089	One-Color Twill Name/Number	\$26.00*
330090	Two-Color Twill Name/Number	\$36.00*

DRI-FIT MOD



359733 NIKE TEAM USA FAST PITCH SHORT

\$45.00

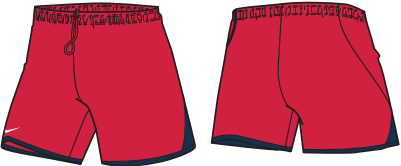
SIZES: XS, S, M, L, XL, 2XL

OFFER DATE: 12/01/09
END DATE: 12/01/12

Lightweight Dri-FIT piqué fabric. Contrast bottom hem trim and small contrast pop on short side panels. Gripper elastic and drawcord waistband for adjustability. Swoosh design trademark at lower right thigh. Hip width: 22.25" (size medium), Inseam length: 6.75" (all sizes).

FABRIC: 100% polyester.

DRI-FIT MOD



360098 STEALTH 3/4-PANT

\$50.00

SIZES: XS, S, M, L, XL, 2XL

OFFER DATE: 12/01/09
END DATE: 12/01/12

Fast pitch specific fit with over-the-knee pant length. Gripper at leg opening to lock sock and pant in place for proper fit. Side panel mesh insets. Reinforced, double-layer knee for durability. Contrast piping along side seams and back panel. Pockets hidden in back piping seam to reduce bulk and weight. Gripper elastic and drawcord waistband. Swoosh design trademark at upper left hip. Hip width: 20.5", Inseam length: 18.75" (size medium).

FABRIC: 100% polyester.

MOD



VENTED FAST PITCH JERSEY

See below*



SIZES: XS, S, M, L, XL, 2XL

OFFER DATE: 12/01/07
END DATE: 09/01/12

Premier fast pitch short-sleeve jersey with strategically placed insets for optimal ventilation, fully sublimated side panel design for team customization. Swoosh design trademark on right chest. Nike Team Sports jock tag at lower left hem. Body width: 20.5", Body length: 29" (size medium).
FABRIC: Body: 100% polyester tricot warp knit. Neck & Sleeve Insets: 100% polyester. Sublimated side mesh inset: 100% polyester circular knit mesh.

243415	Arizona Design (Blank)	\$50.00*
243415	Speed Design (Blank)	\$50.00*
359555	One-Color Screen Print	\$16.00*
359556	Two-Color Screen Print	\$26.00*
330089	One-Color Twill Name/Number	\$26.00*
330090	Two-Color Twill Name/Number	\$36.00*

DRI-FIT MOD USA



Speed Design



Arizona Design

FAST PITCH – MODIFIED UNIFORM OPTIONS



PIPING AND BRAID COLOR OPTIONS



PIPING AND BRAID OPTIONS



1 color/solid
(1/8" or 3/8" width)



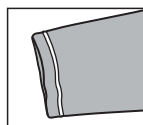
1 color/solid
2 color/3 stripes
(3/8" width)

PIPING AND BRAID PLACEMENTS

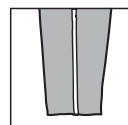
*Please refer to price sheet with body and insert options



Placket



Sleeve



Pant

FONT APPLICATIONS

- 4" front letters (5 letters or less)
- 3" front letters (6-10 letters)
- Scaled names (5" max letter height)
- 4" front numbers
- 8" back numbers
- No nameplates or player names

TIGERS

Straight

Wildcats

Script w/ Tail

Wildcats

Script w/o Tail

EAGLES

Vertical Arch

ARIZONA

Padres Style Arch

Bc

Step Down

B

Single 6" Letter
(Men's Only)

FONTS

BRUSH SCRIPT - 1 or 2 color tackle twill

ABCDEFGHIJKLMNOPQRSTUVWXYZ

LOWER CASE SCRIPT - 1 or 2 color tackle twill

abcdefghijklmnopqrstuvwxyz

KANSAS - 1 or 2 color tackle twill

ABCDEFGHIJKLMNOPQRSTUVWXYZ

FULL BLOCK - 1 or 2 color tackle twill

ABCDEFGHIJKLMNOPQRSTUVWXYZ

CAXTON ROMAN - 1 or 2 color tackle twill

ABCDEFGHIJKLMNOPQRSTUVWXYZ

ATHLETIC SHADOW - 1 or 2 color tackle twill

ABCDEFGHIJKLMNOPQRSTUVWXYZ

DADE BOLD - 1 or 2 color tackle twill (No Arched Options)

ABCDEFGHIJKLMNOPQRSTUVWXYZ

COUGARS - 1 or 2 color tackle twill (No Arched Options)

ABCDEFGHIJKLMNOPQRSTUVWXYZ

MICHIGAN STATE - 1 or 2 color tackle twill

ABCDEFGHIJKLMNOPQRSTUVWXYZ

FULL BLOCK - 1 or 2 color tackle twill

0123456789

CAXTON - 1 or 2 color tackle twill

0123456789

KANSAS - 1 or 2 color tackle twill

0123456789

ATHLETIC SHADOW - 1 or 2 color tackle twill

0123456789

DADE BOLD - 1 or 2 color tackle twill

1234567890

COUGARS - 1 or 2 color tackle twill

0123456789

MICHIGAN STATE - 1 or 2 color tackle twill

1234567890

PRICING

- 359555 – One-Color Screen Print: \$16.00
- 359556 – Two-Color Screen Print: \$26.00
- 330089 – One-Color Twill: \$26.00
- 330090 – Two-Color Twill: \$36.00
- 409637 – One-Color Lightweight Twill: \$36.00
- 409638 – Two-Color Lightweight Twill: \$44.00
- 269941 – One-Color Twill Name/Number split front: \$50.00
- 269942 – Two-Color Twill Name/Number split front: \$70.00
- 436077 – One-Color Lightweight Twill split front: \$70.00
- 436078 – Two-Color Lightweight Twill split front: \$80.00
- +2" extra length: \$1.50
- +4" extra length: \$3.00

337526 | DQT US GAME UNIFORM JERSEY

\$80.00*



SIZES: XS, S, M, L, XL, 2XL
*15% upcharge for 3XL

OFFER DATE: AVAILABLE 365 DAYS/YEAR

3-5 WEEK DELIVERY UPON ARTWORK APPROVAL. Designed for the elite women's player, the new digitally printed and fully sublimated Women's US Game Jersey delivers the ultimate uniform in women's fast pitch. Lightweight Dri-FIT piqué fabric provides a smooth comfort feel. Fully customized jersey with the ability for unique logo placement options on left and right sleeve, upper right chest, center front team name as well as front and back number. Distinctive graphic design on back panel of jersey as worn by Team USA in 2008. Swoosh design trademark at upper right chest. Body width: 20.5", Body length: 29" (size medium). **Exclusive order form required.**

FABRIC: 100% polyester.



359930 | DQT ELITE RACER-BACK GAME JERSEY

\$70.00*



SIZES: XS, S, M, L, XL, 2XL
*15% upcharge for 3XL

OFFER DATE: AVAILABLE 365 DAYS/YEAR

3-5 WEEK DELIVERY UPON ARTWORK APPROVAL. Fully sublimated racer-back game jersey. Poly spandex body with a back mesh panel to allow breathability for the athlete during competition. Contrast side and neck trim. Swoosh design trademark at upper right chest. Body width: 17.5", Body length: 24.75" (size medium). **Exclusive order form required.**

FABRIC: 88% polyester/12% spandex.



359734 NIKE TEAM USA FAST PITCH JERSEY

SIZES: S, M, L, XL, 2XL

*25% upcharge for 3XL

Fast pitch pull-over jersey. V-neck with contrasting sleeves and side inserts. Swoosh design trademark at upper right chest. Body width: 20.5", Body length: 29" (size medium).

Flat-back mesh

CUSTOM



359735 NIKE TEAM USA FAST PITCH SHORT

SIZES: S, M, L, XL, 2XL

*25% upcharge for 3XL

Fast pitch game short with contrast bottom hem trim and small contrast pop on short side panels. Drawcord waistband for adjustability. Swoosh design trademark at lower right leg. Hip width: 22.25" (size medium), Inseam length: 6.75" (all sizes).

Flat-back mesh

CUSTOM



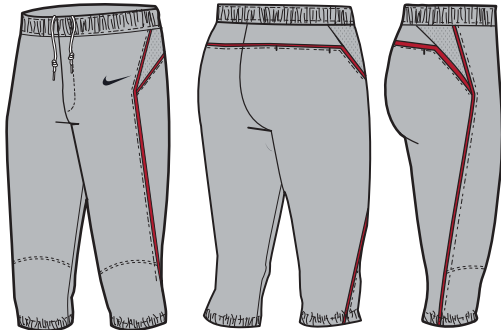
359928 STEALTH 3/4-PANT

SIZES: S, M, L, XL, 2XL

*25% upcharge for 3XL

Pull-on pant featuring false fly front, lined knees and drawstring waist. Pro mesh triangular upper side inserts. Elastic leg opening with side and back piping. Hip width: 20.5", Inseam length: 18.75" (size medium).

CUSTOM



ELITE FULL-BUTTON JERSEY

SIZES: S, M, L, XL, 2XL
*25% upcharge for 3XL
Full-button front jersey with cover-stitched seams and curved Raglan sleeves.
JERSEY OPTIONS:

- Solid colors or pinstripes
- 1/8" button front braid
- 1/2" button front braid placed like piping
- 1/2" braid set-up from sleeve end
- 1/8" piping set-up from sleeve end
- 1" sleeve end trim
- 1/2" braid set-on neckline
- Name plaques
- +2" or +4" extra length
- *Pictured with 1" sleeve end trim option*

NLGM01650	Poly warp knit - Solid colors
NLGM03142	Poly warp knit - White with pinstripes
NLGM03141	Poly warp knit - Grey with pinstripes
NLGM03140	Solid - Medium-weight nylon stretch fit
NLGM03146	White with pinstripes - Medium-weight nylon stretch fit
NLGM03145	Grey with pinstripes - Medium-weight nylon stretch fit
NLGM06897	Solid - Pro mesh

CUSTOM



ELITE CONVENTIONAL SMOOTH FINISH PANT

SIZES: S, M, L, XL, 2XL
*25% upcharge for 3XL
Elastic smooth finish waistband, two-ply knees, two back pockets (left side with button closure) and cover-stitched seams.
PANT OPTIONS:

- Solid colors or pinstripes
- 1/8" side piping (not available on pinstripe)
- 1/2" side braid
- 1" side braid
- 1 1/2" side braid
- +2", +4" or +6" extra length (extra length limitations on pinstripe)
- *Pictured with 1" braid option*

NPKN03129	Poly warp knit - Solid colors
NPKN03131	Poly warp knit - White with pinstripes
NPKN03130	Poly warp knit - Grey with pinstripes
NPKN03126	Solid colors - Medium-weight nylon stretch fit
NPKN03128	White with pinstripes - Medium-weight nylon stretch fit
NPKN03127	Grey with pinstripes - Medium-weight nylon stretch fit
NPKN03125	Solid - Heavyweight nylon stretch fit

CUSTOM



ELITE FULL-BUTTON VEST

SIZES: S, M, L, XL, 2XL
*25% upcharge for 3XL
Full-button front vest with cover-stitched seams.
VEST OPTIONS:

- Solid colors or pinstripes
- 1/8" button front piping
- 1/2" button front braid (placed like piping)
- 1/8" armhole piping set 1/2" up
- 1/2" armhole braid set 1/2" up
- Name plaques
- +2" or +4" extra length
- *Pictured with 1/2" braid option*

NWVT03152	Poly warp knit - Solid colors
NWVT03154	Poly warp knit - White with pinstripes
NWVT03153	Poly warp knit - Grey with pinstripes
NWVT03149	Solid - Medium-weight nylon stretch fit
NWVT03151	White with pinstripes - Medium-weight nylon stretch fit
NWVT03150	Grey with pinstripes - Medium-weight nylon stretch fit
NLGM07339	Solid - Pro Brite mesh
NLGM07338	Solid - Shimmersheen

CUSTOM

ELITE CONVENTIONAL BELT LOOP PANT

SIZES: S, M, L, XL, 2XL
*25% upcharge for 3XL
Non-roll elastic waistband with belt loops, two-ply knees, two back set in pockets, left side with button closure and cover-stitched seams.
PANT OPTIONS:

- Solid colors or pinstripes
- 1/8" side piping (not available on pinstripe)
- 1/2" side braid
- 1" side braid
- 1 1/2" side braid
- +2", +4" or +6" extra length (extra length limitations on nylon pinstripe)
- *Pictured with 1/2" braid option*

NPKN01658	Poly warp knit - Solid colors
NPKN03136	Poly warp knit - White with pinstripes
NPKN03135	Poly warp knit - Grey with pinstripes
NPKN03132	Solid - Medium-weight nylon stretch fit
NPKN03134	White with pinstripes - Medium-weight nylon stretch fit
NPKN03133	Grey with pinstripes - Medium-weight nylon stretch fit
NPKN03124	Solid - Heavyweight nylon stretch fit

CUSTOM



FAST PITCH – ELITE CUSTOM UNIFORM OPTIONS



COLORS AND FABRICS

FABRICS	White	Black	Navy	Purple	Royal	Light Blue	Silver	Dark Green	Kelly Green	Dark Maroon	Cardinal	Scarlet	Orange	Bright Gold	Vegas Gold	Grey	Blue Grey	Pinkfire II
100% stretch fit nylon - Medium/Heavy																		
100% stretch fit nylon - Heavy																		
100% stretch fit nylon white w/ pinstripes - Medium																		
100% stretch fit nylon grey w/ pinstripes - Medium																		
100% polyester warp knit (top weight)																		
100% polyester warp knit (bottom weight)																		
100% nylon pro mesh																		
100% nylon Dri-FIT Flat-back mesh																		
Shimmersheen																		
Pro-Brite mesh																		

MEN'S CUSTOM UNIFORM SIZING FOR CARRY OVER STYLES*

*For new styles please refer to sizing chart in information section of the catalog.

SIZE	CHEST	WAIST	INSEAM
Small	34-36	26-28	27
Medium	38-40	30-32	29
Large	42-44	34-36	29
XL	46-48	38-40	29
2XL	50-52	42-44	29

WOMEN'S CUSTOM UNIFORM SIZING FOR CARRY OVER STYLES*

*For new styles please refer to sizing chart in information section of the catalog.

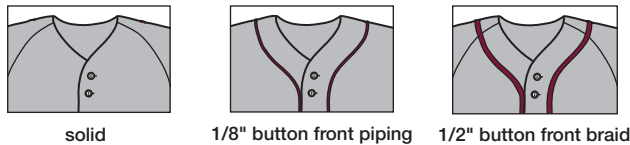
SIZE	BUST	WAIST	INSEAM
Small	32	24	22
Medium	34-36	26-28	22-23
Large	38-40	30-32	23
XL	42-44	34-36	23-25
2XL	46-48	38-40	25
3XL	50-52	42-44	25

TRIM OPTIONS

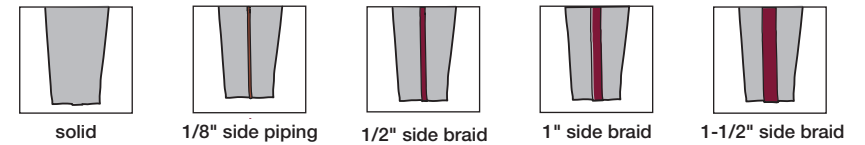
NECK/CUFF/PANT TRIM OPTIONS* *1/8" braid piping available in solid colors. *1/2" braid available on 11, 22, 23E and 33E patterns only.



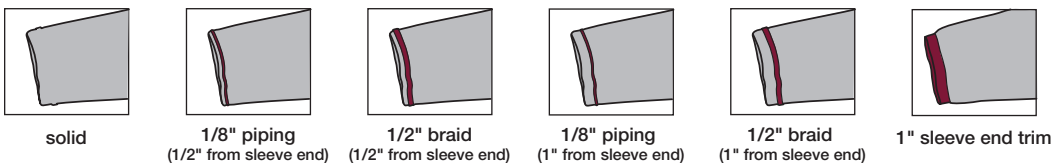
FULL BUTTON JERSEY OR VEST FRONT TRIM OPTIONS



BASEBALL PANT TRIM OPTIONS



FULL BUTTON JERSEY SLEEVE TRIM OPTIONS



FONTS

- Tackle twill and print
- Script lettering - 5" caps with 3" lower case / 4" caps with 2"
- Name plates and names are offered depending on style

Wildcats

SCRIPT 1

(1 or 2 color print or tackle twill,
1 color tail \$6, 2 color tail \$10)

ARIZONA

PADRES STYLE

(2 color print or tackle twill)

PLAIN BLOCK (1 or 2 color print or tackle twill - 3"/4")

A B C D E F G H I J K L M N O P Q R S T U V W X Y Z

FULL BLOCK (1 or 2 color print or tackle twill - 3"/4")

A B C D E F G H I J K L M N O P Q R S T U V W X Y Z

ATHLETIC SHADOW (2 color print or tackle twill - 3"/4")

A B C D E F G H I J K L M N O P Q R S T U V W X Y Z

GOTHIC BLOCK (1 or 2 color print or tackle twill - 3"/4")

A B C D E F G H I J K L M N O P Q R S T U V W X Y Z

ATHLETIC GOTHIC SHADOW (1 or 2 color print or tackle twill - 3"/4")

A B C D E F G H I J K L M N O P Q R S T U V W X Y Z

KANSAS BLOCK (1 or 2 color print or tackle twill - 3"/4")

A B C D E F G H I J K L M N O P Q R S T U V W X Y Z

CAXTON ROMAN BOOK (1 or 2 color print or tackle twill - 3"/4")

A B C D E F G H I J K L M N O P Q R S T U V W X Y Z

SYRACUSE BLOCK (1 or 2 color print or tackle twill - 3"/4")

A B C D E F G H I J K L M N O P Q R S T U V W X Y Z

TRUE BLOCK - 1 or 2 color tackle twill)

A B C D E F G H I J K L M N O P Q R S T U V W X Y Z

MIAMI - 1 or 2 color tackle twill)

A B C D E F G H I J K L M N O P Q R S T U V W X Y Z

ATHLETIC GOTHIC SHADOW (2 color print or tackle twill - 4"/6"/8")

1 2 3 4 5 6 7 8 9 0

ATHLETIC SHADOW (2 color only print or tackle twill - 4"/5"/6"/8"/10"/12")

1 2 3 4 5 6 7 8 9 0

KANSAS BLOCK (1 or 2 color print or tackle twill - 4"/6"/8")

1 2 3 4 5 6 7 8 9 0

SYRACUSE BLOCK (tackle twill - 3"/4"/6"/8")

1 2 3 4 5 6 7 8 9 0

GOTHIC (1 or 2 color print - 4"/6"/8"/10"/12", tackle twill only - 4"/6"/8"/10")

1 2 3 4 5 6 7 8 9 0

FULL BLOCK (1 or 2 color print or tackle twill - 8"/10"/12")

1 2 3 4 5 6 7 8 9 0

CAXTON ROMAN BOOK (1 or 2 color print or tackle twill - 4"/5"/6"/8")

1 2 3 4 5 6 7 8 9 0

TRUE BLOCK - 1 or 2 color tackle twill)

0 1 2 3 4 5 6 7 8 9

MIAMI - 1 or 2 color tackle twill)

0 1 2 3 4 5 6 7 8 9



415177 | WMNS NIKE AIR UNIFY PRO \$70.00

SIZES: 5-12 OFFER DATE: C/O

Strategically designed for fastpitch softball. Designed for the athlete looking for comfort and performance.

UPPER: A comfortable blend of synthetics creates a form fitting women's cleat, molded drag cap provides toe protection and durability.

MIDSOLE: Full-length Phylon midsole.

OUTSOLE: Power channel allows for longer surface contact during driving phase molded TPU outsole for lightweight comfortable traction.

001 Black/White



415179 | WMNS NIKE UNIFY METAL \$60.00

SIZES: 5-12 OFFER DATE: C/O

A metal spike for her with all the extra features. Strategically designed for fastpitch softball.

UPPER: Synthetic leather upper. Molded TPU frame line drag cap provides complete toe protection and durability.

MIDSOLE: Phylon midsole wedge with EVA foam liner for comfort.

OUTSOLE: 5-spike Nike speed plate gets in and out of the ground faster. Supplemental cleats provide extra traction in change of direction movements.

001 Black/White

411 Navy/White

612 Red/White



415182 | WMNS AIR TEAM DESTROYER 3 \$65.00

SIZES: 5-12, 13, 14 OFFER DATE: 10/1

The first true women's turf shoe. Designed for the competitive athlete looking for comfort and performance.

UPPER: Lightweight and durable synthetic leather with supportive synthetic overlays and midfoot.

MIDSOLE: Phylon midsole with Air-Sole unit for maximum comfort.

OUTSOLE: New rubber bottom Destroyer traction. Integrated flex zones and rubber nubs allow for lightweight traction on all turf conditions.

010 Black/Black-White

100 White/Metallic Silver-Black

NEW



BT0644 | AERO ATHENA COMPOSITE (2011) \$275.00

SIZES: 30/20, 33/23, 34/24, 31/21, 32/22 OFFER DATE: C/O

Advanced-performance, multi-wall fastpitch bat • Multi-Wall Cross-React Carbon Composite creates an explosive bat/ball collision • Power Belt Technology maximizes the size of the sweet spot • Extended barrel profile expands hitting area and sweet spot • Patented Aero-Cap is 3% more aerodynamic than traditional cupped-end bats for increased bat speed and additional power • Durable automotive clearcoat • -10 length-to-weight ratio, 2 1/4" barrel diameter, fastpitch certified ASA 2004, USSSA BPF 1.20, NSA, and ISF BPF 1.20 • Cushioned synthetic-leather grip offers exceptional feel and durability

110 White/White/(Black)

NEW



GB0309 | IMARA \$20.00

SIZES: S, M, L, XL OFFER DATE: C/O

Competitive/recreational fastpitch batting gloves • Genuine leather palm offers exceptional grip and feel • Ventilated mesh helps keep hands cool and comfortable • Adjustable elastic wristband secures fit

151 White/(White)

NEW



BF1437 | N1 ATHENA 12.50" BASKET WEB \$65.00

SIZES: REGULAR OFFER DATE: 10/1

Advanced, articulated Nike Air bag curves from the upper palm to the index finger for no-sting impact control • Game-Ready oiled Steerhide is soft, durable and holds its structure, with reinforced anti-abrasion edges • Full-grainleather lacing for strength and durability • Dri-FIT technology moisture-wicking fabric finger linings help keep hands dry and comfortable • Basket web is strong, durable and versatile

021 Black/Brown/(White)

NEW



BZ9289 | BASEBALL BACKPACK \$40.00

SIZES: MISC **OFFER DATE:** 10/1
 Dual bat sleeves • Separate shoe compartment • Sealed batting glove pocket
 • Easy-access pocket for the little things

- | | |
|--------------------------------|----------------------------------|
| 070 Black/Silver/(Black) | 497 Varsity Royal/Black/(Silver) |
| 647 Varsity Red/Black/(Silver) | |



BA2725 | FUSE ROLLER BAG \$100.00

SIZES: MISC **OFFER DATE:** C/O
 Ultimate wheeled locker bag with dugout organizer flap • Wide mouth padded four-bat sleeve, huge main compartment for helmet, catcher's gear and tournament essentials • Fence hooks, dugout flap, two mesh pouches, shoe compartment, insulated water-bottle holder • Durable urethane wheels and nylon pull-strap make it easy to carry heavy loads • 1200D polyester with coated water and scuff-resistant bottom, rugged extra-large zippers on main compartment

- DIMENSIONS:** 36"L x 14"W x 14"H
- | |
|-----------------------------------|
| 058 Black/Black/(Metallic Silver) |
|-----------------------------------|



BS0122 | VAPOR BAT BAG \$40.00

SIZES: MISC **OFFER DATE:** C/O
 Backpack-style carry system with padded back panel balances loads evenly and features adjustable padded straps for comfort • Padded three-bat sleeve, fence hook, dugout organizer flap, mesh locker pouch, shoe compartment
 • Main Compartment holds a helmet, fielding glove and other equipment
 • 600 D polyester with coated water and scuff-resistant bottom, rugged extra large zippers

- | |
|------------------|
| 058 Black/Silver |
|------------------|



BS0121 | DIAMOND ELITE SHOW BAT BAG \$30.00

SIZES: MISC **OFFER DATE:** C/O
 Durable bat bag with fence clip and valuables pocket • Padded three-bat sleeve, fence hook, dugout organizer flap, mesh locker pouch, shoe compartment • Padded shoulder strap and handles • 600 D polyester and nylon construction, rugged large zippers, wide nylon webbing, dual loop

- DIMENSIONS:** 36"L x 8"W x 9"H
- | |
|-----------------------------------|
| 058 Black/Black/(Metallic Silver) |
|-----------------------------------|