



WOMEN'S FAST PITCH

NIKETEAM.COM



453380

STOCK FULL BUTTON S/S JERSEY

\$50.00*

SIZES: XS, S, M, L, XL, 2XL

OFFER DATE: 12/01/11

*15% upcharge for 3XL

END DATE: 12/01/14

Poly warp knit full button short-sleeve game jersey. Knit mesh under arms for added breathability. Embroidered Swoosh design trademark upper left chest. Nike Team Sports jock tag at lower left hem. Body width: 19.5", Body length: 29" (size medium).

FABRIC: Body: 100% polyester. Insets: 84% polyester/16% spandex.

012 Black/White/(White)	043 Blue Grey/White/(Black)	100 White/White/(Black)
342 Dark Green/White/(White)	420 Navy/White/(White)	494 Royal/White/(White)
612 Cardinal/White/(White)	658 Scarlet/White/(White)	670 Dark Maroon/White/(White)



453383

STOCK ALL OUT 3/4 PANT

\$50.00

SIZES: S, M, L, XL, 2XL

OFFER DATE: 12/01/11

END DATE: 12/01/14

Poly warp knit fast pitch pant with over-the-knee length. Gripper at leg opening to lock sock and pant in place for proper fit. Rocked side seam placement for comfort in pitch and slide. 5 belt loop system, 2 button snap and brass zipper front closure. Reinforced, double-layer knee for durability. 2 back welt pockets to reduce bulk and weight. Gripper elastic waistband. Embroidered Swoosh design trademark at upper left hip. Hip width: 21.25", Inseam length: 18.75" (size medium).

FABRIC: 100% polyester.

010 Black/(White)	052 Blue Grey/(Black)	100 White/(Black)
419 Navy/(White)	657 Scarlet/(White)	



359741

ELITE RACER-BACK GAME JERSEY

\$40.00

SIZES: XS, S, M, L, XL, 2XL

OFFER DATE: 12/01/09
END DATE: 12/01/12

Racer-back V-neck game jersey. Poly spandex body with a back mesh panel to allow breathability for the athlete during competition. Contrast side vented insets. Nike Team Sports jock tag at lower left hem. Swoosh design trademark at upper right chest. Body width: 17.5", Body length: 24.75" (size medium).

FABRIC: 92% polyester/8% spandex.

012 Black/White/(White)	100 White/White/(Black)	342 Dark Green/White/(White)
420 Navy/White/(White)	494 Royal/White/(White)	546 Purple/White/(White)
612 Cardinal/White/(White)	658 Scarlet/White/(White)	

359923

ELITE SHORT

\$35.00

SIZES: XS, S, M, L, XL, 2XL

OFFER DATE: 12/01/09
END DATE: 12/01/12

Dri-FIT poly piqué game short. Contrast side vented inset. Brushed elastic waistband with draw-cord providing comfort to the athlete while on field. Swoosh design trademark on lower left hem. Hip width: 22.25" (size medium), Inseam length: 5" (all sizes).

FABRIC: 100% polyester.

012 Black/White/(White)	100 White/White/(Black)	342 Dark Green/White/(White)
420 Navy/White/(White)	494 Royal/White/(White)	546 Purple/White/(White)
612 Cardinal/White/(White)	658 Scarlet/White/(White)	



299423

STEALTH FAST PITCH JERSEY

\$40.00

SIZES: XS, S, M, L, XL, 2XL

OFFER DATE: 12/01/08
END DATE: 12/01/12

Lightweight Dri-FIT fabric jersey with mesh insets at side panels and upper back for ventilation. Unique embossed design on both sleeves. Contrast white piping along shoulders and side panels. Contrast white insets at neck. Swoosh design trademark at left sleeve. Body width: 20.5", Body length: 27" (size medium).

FABRIC: 100% polyester.

011 Silver/White/(Black)	012 Black/White/(White)	100 White/White/(Black)
342 Dark Green/White/(White)	420 Navy/White/(White)	494 Royal/White/(White)
612 Cardinal/White/(White)	658 Scarlet/White/(White)	

DRI-FIT



299422

STEALTH FAST PITCH PANT

\$45.00

SIZES: XS, S, M, L, XL, 2XL

OFFER DATE: 12/01/08
END DATE: 12/01/12

Fast pitch specific fit with over-the-knee pant length. Gripper at leg opening to lock sock and pant in place for proper fit. Rocked side seam placement for comfort in pitch and slide. Mesh insets at sides for ventilation. Reinforced, double-layer knee for durability. White contrast piping along side seams and back panel. Mesh pockets hidden in back piping seam to reduce bulk and weight. Gripper elastic and drawcord waistband. Swoosh design trademark at upper left hip. Hip width: 19.5", Inseam length: 18.75" (size medium).

FABRIC: 100% polyester.

012 Black/White/(White)	043 Blue Grey/White/(White)	100 White/White/(Black)
420 Navy/White/(White)	657 Scarlet/White/(White)	



399217

CORE 3/4 FAST PITCH PANT

\$25.00

SIZES: S, M, L, XL, 2XL

OFFER DATE: 12/01/10
END DATE: 12/01/13

Poly warp knit 3/4 length fast pitch pant with reinforced knees for durability, gripper elastic waistband with a draw cord for adjustability, two back welt pockets and gripper elastic at bottom pant hem. Embroidered Swoosh design trademark at upper left hip. Hip width: 20.5", Inseam length: 18.75" (size medium).

FABRIC: 100% polyester.

010 Black/(White)	052 Blue Grey/(Black)	100 White/(Black)
419 Navy/(White)	657 Scarlet/(White)	

Youth #399218 / S-XL / \$20.00 / Hip width: 16.5", Inseam length: 15.25" (size medium)

Y



MOD FULL-BUTTON S/S JERSEY

See below*



SIZES: XS, S, M, L, XL, 2XL

OFFER DATE: 12/01/11
END DATE: 12/01/14

Poly warp knit full button short-sleeve game jersey. Knit mesh under arms for added breathability. Embroidered Swoosh design trademark upper left chest. Nike team sports jock tag at lower left hem. Body width: 19.5", Body length: 29" (size medium).

FABRIC: Body: 100% polyester. Mesh: 86% polyester/14% spandex.

453381	Blank	\$55.00*
269941	One-Color Twill Name/Number Split Front	\$100.00*
269942	Two-Color Twill Name/Number Split Front	\$125.00*
436077	One-Color Lightweight Twill Split Front	\$125.00*
436078	Two-Color Lightweight Twill Split Front	\$135.00*
269945	Arm Cuff - Braid/Piping	\$10.00*
269946	Neck/Placket - Braid/Piping	\$30.00*



MOD ALL OUT 3/4 PANT

See below*



SIZES: XS, S, M, L, XL, 2XL

OFFER DATE: 12/01/11
END DATE: 12/01/14

Poly warp knit fast pitch pant with over-the-knee length. Gripper at leg opening to lock sock and pant in place for proper fit. Rocked side seam placement for comfort in pitch and slide. 5 belt loop system, 2 button snap and brass zipper front closure. Reinforced, double-layer knee for durability. 2 back welt pockets to reduce bulk and weight. Gripper elastic waistband. Embroidered Swoosh design trademark at upper left hip. Hip width: 21.25", Inseam length: 18.75" (size medium).

FABRIC: 100% polyester.

453382	Blank	\$55.00*
269947	Braid/Piping	\$14.00*



ELITE S/S JERSEY

See below*



SIZES: XS, S, M, L, XL, 2XL
*15% upcharge for 3XL

OFFER DATE: 12/01/09
END DATE: 12/01/12

Poly spandex short-sleeve game jersey with a back mesh panel to allow breathability for the athlete during competition. Contrast vented side insets and contrast neck trim. Nike Team Sports jock tag at lower left hem. Swoosh design trademark at upper right chest. Body width: 18", Body length: 24.75" (size medium).

FABRIC: 92% polyester/8% spandex.

359743	Blank	\$45.00*
330089	One-Color Twill	\$71.00*
330090	Two-Color Twill	\$81.00*
359555	One-Color Screen Print	\$61.00*
359556	Two-Color Screen Print	\$71.00*
409637	One-Color Lightweight Stretch Twill	\$81.00*
409638	Two-Color Lightweight Stretch Twill	\$89.00*
456533	Sublimated Standard Twill	\$75.00*
456047	Sublimated Lightweight Stretch Twill	\$85.00*



ELITE RACER-BACK JERSEY

See below*



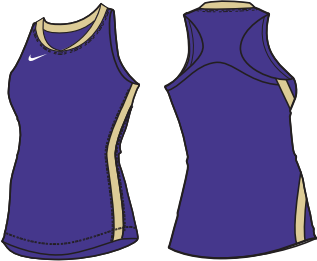
SIZES: XS, S, M, L, XL, 2XL
*15% upcharge for 3XL

OFFER DATE: 12/01/09
END DATE: 12/01/12

Racer-back V-neck game jersey. Poly spandex body with a back mesh panel to allow breathability for the athlete during competition. Contrast vented side insets and contrast neck trim. Nike Team Sports jock tag at lower left hem. Swoosh design trademark at upper right chest. Body width: 17.5", Body length: 24.75" (size medium).

FABRIC: 92% polyester/8% spandex.

359744	Blank	\$45.00*
330089	One-Color Twill	\$71.00*
330090	Two-Color Twill	\$81.00*
359555	One-Color Screen Print	\$61.00*
359556	Two-Color Screen Print	\$71.00*
409637	One-Color Lightweight Stretch Twill	\$81.00*
409638	Two-Color Lightweight Stretch Twill	\$89.00*
456533	Sublimated Standard Twill	\$75.00*
456047	Sublimated Lightweight Stretch Twill	\$85.00*



360097 ELITE SHORT

\$40.00*



SIZES: XS, S, M, L, XL, 2XL
*15% upcharge for 3XL

OFFER DATE: 12/01/09
END DATE: 12/01/12

Dri-FIT poly piqué game short. Contrast side vented inset. Brushed elastic waistband with drawcord providing comfort to the athlete while on field. Swoosh design trademark on lower left hem. Hip width: 22.25" (size medium), Inseam length: 5" (all sizes).

FABRIC: 100% polyester.



NIKE TEAM USA FAST PITCH JERSEY

See below*

SIZES: XS, S, M, L, XL, 2XL

OFFER DATE: 12/01/09
END DATE: 12/01/12

A lightweight Dri-FIT piqué fabric providing a smooth comfort feel for the fast pitch athlete while on the diamond. Contrast sleeves and back mesh inset for breathability. Nike Team Sports jock tag at lower left hem. Swoosh design trademark at upper right chest. Body width: 20.5", Body length: 29" (size medium).

FABRIC: 100% polyester.

359732	Blank	\$50.00*
359555	One-Color Screen Print	\$16.00*
359556	Two-Color Screen Print	\$26.00*
330089	One-Color Twill Name/Number	\$26.00*
330090	Two-Color Twill Name/Number	\$36.00*

DRI-FIT MOD



359733 NIKE TEAM USA FAST PITCH SHORT

\$45.00

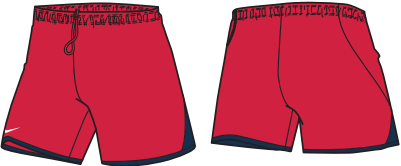
SIZES: XS, S, M, L, XL, 2XL

OFFER DATE: 12/01/09
END DATE: 12/01/12

Lightweight Dri-FIT piqué fabric. Contrast bottom hem trim and small contrast pop on short side panels. Gripper elastic and drawcord waistband for adjustability. Swoosh design trademark at lower right thigh. Hip width: 22.25" (size medium), Inseam length: 6.75" (all sizes).

FABRIC: 100% polyester.

DRI-FIT MOD



360098 STEALTH 3/4-PANT

\$50.00

SIZES: XS, S, M, L, XL, 2XL

OFFER DATE: 12/01/09
END DATE: 12/01/12

Fast pitch specific fit with over-the-knee pant length. Gripper at leg opening to lock sock and pant in place for proper fit. Side panel mesh insets. Reinforced, double-layer knee for durability. Contrast piping along side seams and back panel. Pockets hidden in back piping seam to reduce bulk and weight. Gripper elastic and drawcord waistband. Swoosh design trademark at upper left hip. Hip width: 20.5", Inseam length: 18.75" (size medium).

FABRIC: 100% polyester.

MOD



FAST PITCH – MODIFIED UNIFORM OPTIONS



PIPING AND BRAID COLOR OPTIONS



PIPING AND BRAID OPTIONS



1 color/solid
(1/8" or 3/8" width)



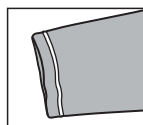
1 color/solid
2 color/3 stripes
(3/8" width)

PIPING AND BRAID PLACEMENTS

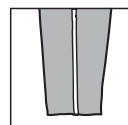
*Please refer to price sheet with body and insert options



Placket



Sleeve



Pant

FONT APPLICATIONS

- 4" front letters (5 letters or less)
- 3" front letters (6-10 letters)
- Scaled names (5" max letter height)
- 4" front numbers
- 8" back numbers
- No nameplates or player names

TIGERS

Straight

Wildcats

Script w/ Tail

Wildcats

Script w/o Tail

EAGLES

Vertical Arch

ARIZONA

Padres Style Arch

BC

Step Down

B

Single 6" Letter
(Men's Only)

FONTS

BRUSH SCRIPT - 1 or 2 color tackle twill

ABCDEFGHIJKLMNOPQRSTUVWXYZ

LOWER CASE SCRIPT - 1 or 2 color tackle twill

abcdefghijklmnopqrstuvwxyz

KANSAS - 1 or 2 color tackle twill

ABCDEFGHIJKLMNOPQRSTUVWXYZ

FULL BLOCK - 1 or 2 color tackle twill

ABCDEFGHIJKLMNOPQRSTUVWXYZ

CAXTON ROMAN - 1 or 2 color tackle twill

ABCDEFGHIJKLMNOPQRSTUVWXYZ

ATHLETIC SHADOW - 1 or 2 color tackle twill

ABCDEFGHIJKLMNOPQRSTUVWXYZ

DADE BOLD - 1 or 2 color tackle twill (No Arched Options)

ABCDEFGHIJKLMNOPQRSTUVWXYZ

COUGARS - 1 or 2 color tackle twill (No Arched Options)

ABCDEFGHIJKLMNOPQRSTUVWXYZ

MICHIGAN STATE - 1 or 2 color tackle twill

ABCDEFGHIJKLMNOPQRSTUVWXYZ

FULL BLOCK - 1 or 2 color tackle twill

0123456789

CAXTON - 1 or 2 color tackle twill

0123456789

KANSAS - 1 or 2 color tackle twill

0123456789

ATHLETIC SHADOW - 1 or 2 color tackle twill

0123456789

DADE BOLD - 1 or 2 color tackle twill

1234567890

COUGARS - 1 or 2 color tackle twill

0123456789

MICHIGAN STATE - 1 or 2 color tackle twill

1234567890

PRICING

- 359555 – One-Color Screen Print: \$16.00
- 359556 – Two-Color Screen Print: \$26.00
- 330089 – One-Color Twill: \$26.00
- 330090 – Two-Color Twill: \$36.00
- 409637 – One-Color Lightweight Twill: \$36.00
- 409638 – Two-Color Lightweight Twill: \$44.00
- 269941 – One-Color Twill Name/Number split front: \$50.00
- 269942 – Two-Color Twill Name/Number split front: \$70.00
- 436077 – One-Color Lightweight Twill split front: \$70.00
- 436078 – Two-Color Lightweight Twill split front: \$80.00
- +2" extra length: \$1.50
- +4" extra length: \$3.00

337526 DQT US GAME UNIFORM JERSEY

\$80.00*



SIZES: XS, S, M, L, XL, 2XL
*15% upcharge for 3XL

OFFER DATE: AVAILABLE 365 DAYS/YEAR

3-5 WEEK DELIVERY UPON ARTWORK APPROVAL. Designed for the elite women's player, the new digitally printed and fully sublimated Women's US Game Jersey delivers the ultimate uniform in women's fast pitch. Lightweight Dri-FIT piqué fabric provides a smooth comfort feel. Fully customized jersey with the ability for unique logo placement options on left and right sleeve, upper right chest, center front team name as well as front and back number. Distinctive graphic design on back panel of jersey as worn by Team USA in 2008. Swoosh design trademark at upper right chest. Body width: 20.5", Body length: 29" (size medium). **Exclusive order form required.**

FABRIC: 100% polyester.



337525 DQT US GAME UNIFORM SHORT

\$64.00*



SIZES: XS, S, M, L, XL, 2XL
*15% upcharge for 3XL

OFFER DATE: AVAILABLE 365 DAYS/YEAR

3-5 WEEK DELIVERY UPON ARTWORK APPROVAL. Designed for the elite women's player, the new digitally printed and fully sublimated Women's US Game Short delivers the ultimate uniform in women's fast pitch. Lightweight Dri-FIT piqué fabric provides a smooth comfort feel. Fully customized short with the ability for unique logo placement or number option on left thigh. Contrast color blocking on bottom hem and lower side panels. Swoosh design trademark at lower right thigh. Hip width: 22.25" (size medium), Inseam length: 6.75" (all sizes). **Exclusive order form required.**

FABRIC: 100% polyester.



CHARACTER SPECIFICATIONS

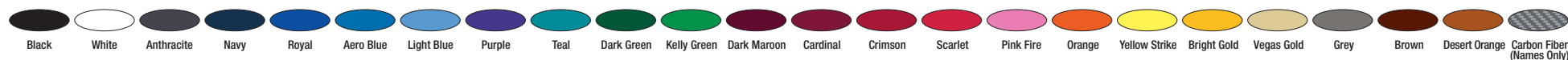
- MAXIMUM 9 CHARACTERS ON JERSEY / 2 CHARACTERS ON SHORT
- 3" LETTERS (1 OR 2 COLOR)
- 4" NUMBERS ON FRONT (1 OR 2 COLOR)
- 6" NUMBERS ON BACK (1 OR 2 COLOR)



DIGITAL QUICK-TURN UNIFORM OPTIONS



PRIMARY AND SECONDARY COLOR OPTIONS



FONT OPTIONS

A-GOTHIC - 1 or 2 color

ABCDEFGHIJKLMNOPQRSTUVWXYZ

ATHLETIC SHADOW - 2 color

ABCDEFGHIJKLMNOPQRSTUVWXYZ

BOULDER BOLD - 1 or 2 color

ABCDEFGHIJKLMNOPQRSTUVWXYZ

BUREAU - 1 or 2 color

ABCDEFGHIJKLMNOPQRSTUVWXYZ

COUGARS - 1 or 2 color (Cannot be Arched or Vertically Arched)

ABCDEFGHIJKLMNOPQRSTUVWXYZ

DADE BOLD - 1 or 2 color

ABCDEFGHIJKLMNOPQRSTUVWXYZ

FACET BOLD - 1 or 2 color

ABCDEFGHIJKLMNOPQRSTUVWXYZ

FB RUSH - 1 or 2 color

ABCDEFGHIJKLMNOPQRSTUVWXYZ

FB02 CONDENSED - 1 or 2 color

ABCDEFGHIJKLMNOPQRSTUVWXYZ

FULL BLOCK - 1 or 2 color

ABCDEFGHIJKLMNOPQRSTUVWXYZ

GLADES BOLD - 1 or 2 color

ABCDEFGHIJKLMNOPQRSTUVWXYZ

GOTHIC - 1 or 2 color

ABCDEFGHIJKLMNOPQRSTUVWXYZ

ITHACA - 1 or 2 color

ABCDEFGHIJKLMNOPQRSTUVWXYZ

MICHIGAN STATE - 1 or 2 color

ABCDEFGHIJKLMNOPQRSTUVWXYZ

NARROW FULL BLOCK - 1 or 2 color

ABCDEFGHIJKLMNOPQRSTUVWXYZ

SYRACUSE - 1 or 2 color

ABCDEFGHIJKLMNOPQRSTUVWXYZ

TUCSON BOLD - 1 or 2 color

ABCDEFGHIJKLMNOPQRSTUVWXYZ

A-GOTHIC - 1 or 2 color

1234567890

ATHLETIC SHADOW - 2 color

012345012345

BOULDER BOLD - 3 color

1234567890

BUREAU - 1 or 2 color

1234567890

COUGARS - 1 or 2 color

0123456789

DADE BOLD - 1 or 2 color

1234567890

FACET BOLD - 1 or 2 color

1234567890

FB RUSH - 1 or 2 color

1234567890

FB02 CONDENSED - 1 or 2 color

1234567890

FULL BLOCK - 1 or 2 color

1234567890

GLADES BOLD - 1 or 2 color

1234567890

GOTHIC - 1 or 2 color

1234567890

ITHACA - 1 or 2 color

1234567890

MICHIGAN STATE - 1 or 2 color

1234567890

NARROW FULL BLOCK - 1 or 2 color

1234567890

SYRACUSE - 1 or 2 color

012345012345

TUCSON BOLD - 1 or 2 color

1234567890

BLACKSBURG - 1, 2 or 3 color

1234567890

GRID IRON BLOCK - 3 color

1234567890

MORGANTOWN BOLD ITALIC - 1 or 2 color

1234567890

See Uniform Builder at Niketeam.com or Team representative for order and delivery dates.

453181 WMNS LEGEND S/S TEE \$25.00

SIZES: XS, S, M, L, XL, 2XL **OFFER DATE:** 12/01/11
END DATE: 12/01/13

Dri-FIT fabric wicks away sweat to help keep you comfortable and dry. Short-sleeve construction is ideal for a variety of training conditions. Neck tape added for durability and comfort. Swoosh design trademark at upper left chest. Body width: 18.75", Body length: 26.25" (size medium).

FABRIC: 100% polyester.

010 Black/(Matte Silver)	100 White/(Matte Silver)	260 Onyx Heather/(Black)
341 Gorge Green/(Matte Silver)	419 College Navy/(Matte Silver)	448 Valor Blue/(Matte Silver)
493 Game Royal/(Matte Silver)	545 Court Purple/(Matte Silver)	610 Team Maroon/(Matte Silver)
657 University Red/(Matte Silver)	667 Shy Pink/(Matte Silver)	669 Deep Maroon/(Matte Silver)
698 Team Crimson/(Matte Silver)	727 Sundown/(Matte Silver)	783 Team Gold/(Matte Silver)
802 Desert Orange/(Matte Silver)	888 University Orange/(Matte Silver)	

Youth #453189 / S-XL / \$22.00 / Body width: 17.75", Body length: 23.5" (size medium)

NEW DRI-FIT Y



453182 WMNS LEGEND L/S TEE \$28.00

SIZES: XS, S, M, L, XL, 2XL **OFFER DATE:** 12/01/11
END DATE: 12/01/13

Dri-FIT fabric wicks away sweat to help keep you comfortable and dry. Long-sleeve construction is ideal for a variety of training conditions. Neck tape added for durability and comfort. Swoosh design trademark at upper left chest. Body width: 18.75", Body length: 26.25" (size medium).

FABRIC: 100% polyester.

010 Black/(Matte Silver)	100 White/(Matte Silver)	260 Onyx Heather/(Black)
341 Gorge Green/(Matte Silver)	419 College Navy/(Matte Silver)	448 Valor Blue/(Matte Silver)
493 Game Royal/(Matte Silver)	545 Court Purple/(Matte Silver)	610 Team Maroon/(Matte Silver)
657 University Red/(Matte Silver)	667 Shy Pink/(Matte Silver)	669 Deep Maroon/(Matte Silver)
698 Team Crimson/(Matte Silver)	727 Sundown/(Matte Silver)	783 Team Gold/(Matte Silver)
802 Desert Orange/(Matte Silver)	888 University Orange/(Matte Silver)	

NEW DRI-FIT



444116 NIKE PRO - THERMAL MOCK \$50.00

SIZES: XXS, XS, S, M, L, XL **OFFER DATE:** 09/01/11
END DATE: 06/01/13

It's cold outside but she's still training for her sport. Pro thermal mock is the ultimate layering solution for our athlete. Body fabric is a Dri-FIT brushed spandex jersey. Keeps her warm and she can move in it. Seams shifted to the back for comfort, thumbholes for added warmth, and underarm gussets for mobility. Body width: 17.5", Body length: 26" (size medium).

FABRIC: 88% polyester/12% spandex.

010 Black/(White)	063 Grey Heather/(White)	100 White/(Black)
341 Dark Green/(White)	419 Navy/(White)	493 Royal/(White)
545 Purple/(White)	610 Cardinal/(White)	657 University Red/(White)
669 Dark Maroon/(White)		

NEW DRI-FIT



410631

NIKE PRO BRA

\$30.00

SIZES: XS, S, M, L, XL, 2XL

OFFER DATE: 06/01/10
END DATE: 06/01/13

New Dri-FIT Nike Pro compression bra with updated fit and fabrication. Revised body shape for improved support. Bonded seam on front snap, side exterior seam bonded seams. The perfect bra for every activity and motion with its compression fit which provides excellent support. Every detail is carefully considered including the flat and clean finished seams. Lastly, this great piece is hit with the Nike Pro badge at center back to let the athlete know its authenticity. Swoosh design trademark at center chest. Body width: 14", Front Body length: 6.5" (size medium).

FABRIC: Body: 88% polyester/12% spandex.

010 Black/(White)	091 Carbon Heather/(White)	100 White/(Cool Grey)
419 Navy/(White)	657 Scarlet/(White)	

DRI-FIT



410630

CORE 5" COMPRESSION SHORT

\$25.00

SIZES: XS, S, M, L, XL, 2XL

OFFER DATE: 06/01/10
END DATE: 06/01/13

Dri-FIT polyester spandex Nike Pro compression short. Shiny elastic waistband with Nike Pro branding. #3 Swoosh design trademark heat transfer. Nike Pro jock tag at back center waist. Flat seams for comfort and fit. 5" inseam (size medium) can be worn as a base layer and is an essential piece in every athlete's wardrobe. Hip width: 14" (size medium).

FABRIC: Body: Dri-FIT 230 g. 82% polyester/18% spandex.

010 Black/(Cool Grey)	091 Carbon Heather/(White)	100 White/(Cool Grey)
419 Navy/(White)		

DRI-FIT **COMPRESSION**



410623

FRESH MESH 5" FIELD SHORT

\$30.00

SIZES: XS, S, M, L, XL, 2XL

OFFER DATE: 06/01/10
END DATE: 06/01/13

New standard in core excellence this short inspired by field sports will become a staple of the field, gym and track. Open hole mesh construction makes this piece both light and breathable. Taping details give a classic feel that will never go out of style. The 5" inseam provides complete coverage through all athletic movements. Swoosh design trademark embroidered at left leg. Hip width: 23.25", Inseam length: 5" (size medium).

FABRIC: Body: 100% polyester.

012 Black/White/(White)	212 Anthracite/White/(White)	342 Dark Green/White/(White)
420 Navy/White/(White)	494 Royal/White/(White)	546 Purple/White/(White)
612 Cardinal/White/(White)	658 Scarlet/White/(White)	

DRI-FIT



361053

WMNS L/S TRAINING TOP

\$65.00

SIZES: S, M, L, XL
US Team Sports Fit

OFFER DATE: 01/01/10
END DATE: 01/01/13

Updated design. Dri-FIT fabric technical hooded training top with four-way mechanical stretch, half-zip front and vented back panels for thermal regulation. Swoosh design trademark on right chest. Body width: 20", Body length: 26" (size medium).

FABRIC: Body: 92% polyester/8% spandex. Insets: 95% polyester/5% spandex.

018 Black/Silver/(Silver)	214 Anthracite/Silver/(Silver)	346 Dark Green/Silver/(Silver)
424 Navy/Silver/(Silver)	499 Royal/Silver/(Silver)	664 Scarlet/Silver/(Silver)

Youth #368983 / S-XL / \$60.00 / Body width: 16.25", Body length: 24" (size medium)

DRI-FIT **Y**



337295 | WMNS CLASSIC FLEECE HOODY \$50.00*

SIZES: XS, S, M, L, XL, 2XL **OFFER DATE:** 06/01/09
*15% upcharge for 3XL, ST, MT, LT, XLT, 2XLT **END DATE:** 06/01/12

Women's Specific Fit. Long-sleeve fleece hood with "V" at center front neck. Knit rib waistband/side-panel. Embroidered Swoosh design trademark located at upper right chest. Body width: 21.25", Body length: 25.25" (size medium), Tall Body length: +2.375", Tall Sleeve length: +2.375".

FABRIC: Body: 9.6 oz. 80% cotton/20% polyester. Rib: 95% cotton/5% spandex.

010 Black/(White)	075 Sport Grey Heather/(Black)	419 Navy/(White)
493 Royal/(White)	657 Scarlet/(White)	



337296 | WMNS CLASSIC FLEECE PANT \$40.00*

SIZES: XS, S, M, L, XL, 2XL **OFFER DATE:** 06/01/09
*15% upcharge for 3XL, ST, MT, LT, XLT, 2XLT **END DATE:** 06/01/12

Women's Specific Fit. Fleece pant with embroidered Swoosh design trademark at left hip. Draw-cord waistband for adjustable fit and open bottom hem. Hip width: 21.5", Inseam length: 32" (size medium), Tall Inseam length: +2.375".

FABRIC: Body: 9.6 oz. 80% cotton/20% polyester. Rib: 95% cotton/5% spandex.

010 Black/(White)	075 Sport Grey Heather/(Black)	419 Navy/(White)
493 Royal/(White)	657 Scarlet/(White)	



379186 | WMNS MYSTIFI WARM-UP JACKET \$65.00*

SIZES: S, M, L, XL **OFFER DATE:** 06/01/10
*15% upcharge for MT, LT, XLT, 2XLT **END DATE:** 06/01/14

US Team Sports Fit
Knit long-sleeve full-zip soccer warm-up jacket. Dri-FIT double knit pique with knit-in dot pattern, 2x2 knit rib at collar, waist and cuffs. Higher collar height for added warmth, front pockets with zipper closures, music cord management, #3 embroidered Swoosh design trademark at right front. Body width: 19", Body length: 26" (size medium), Tall Body length: +2.375", Tall Sleeve length: +2.375".

FABRIC: Body: 70g. 100% polyester plain warp knit.

012 Black/White/(White)	342 Dark Green/White/(White)	420 Navy/White/(White)
494 Royal/White/(White)	546 Purple/White/(White)	612 Cardinal/White/(White)
658 Scarlet/White/(White)		



Youth #379147 / S-XL / \$60.00 / Body width: 17", Body length: 21" (size medium)

DRI-FIT

378281 | MYSTIFI OPEN BOTTOM PANT \$50.00*

SIZES: XS, S, M, L, XL, 2XL **OFFER DATE:** 06/01/10
*15% upcharge for MT, LT, XLT, 2XLT **END DATE:** 06/01/13

Dri-FIT double knit tapered pant with hidden zipper pockets on the front. 2" wide waistband with flat drawcord for adjustability. Full length contrast pique knit fabric inset on side panel. 12" bottom leg zips. #3 embroidered Swoosh design trademark on upper left thigh. Hip width: 21.75, Inseam length: 31" (size medium), Tall Inseam length: +2.375".

FABRIC: Body: 100% polyester.

012 Black/White/(White)	342 Dark Green/White/(White)	420 Navy/White/(White)
494 Royal/White/(White)	546 Purple/White/(White)	612 Cardinal/White/(White)
658 Scarlet/White/(White)		



Youth #379148 / S-XL / \$45.00 / Hip width: 17.75", Inseam length: 25.375" (size medium)

DRI-FIT

378278

WMNS DEFIANCE JACKET

\$65.00

SIZES: XS, S, M, L, XL, 2XL

OFFER DATE: 06/01/10
END DATE: 06/01/13

Storm-FIT 1 poly taffeta long sleeve full-zip jacket. Fully lined with mesh with taffeta lined sleeve. Easy fit, underarm gussets for mobility. Rib at hem and at cuffs. Elongated neck for warmth. Packable zip hood. Cool embossed fabric on front for a fresh look. Front pockets that allow easy storage for her keys or ID cards. Nike Plus enabled in left front pocket. Reflective taping at center front zipper and center back adds extra style and interest. Swoosh design trademark at upper right chest. Perfect jacket for cool spring mornings into evening practices. Body width: 21.25", Body length: 25" (size medium).

FABRIC: Body/Rib/Lining: 100% polyester.

010	Black/(Flint Grey)	419	Navy/(Flint Grey)	341	Dark Green/(Flint Grey)
493	Royal/(Flint Grey)	545	Purple/(Flint Grey)	610	Cardinal/(Flint Grey)
657	Scarlet/(Flint Grey)				

STORM-FIT



378279

WMNS DEFIANCE PANT

\$55.00

SIZES: XS, S, M, L, XL, 2XL

OFFER DATE: 06/01/10
END DATE: 06/01/13

Storm-FIT 1 mesh lined pant offers long iconic gusset at inner leg for comfort. Cool embossed fabric on back leg panels and inner leg. Lined in mesh to the knee and lower leg lined in self fabric at hem for protection as she trains on and off the field. Full elastic waistband with drawcord makes for a better fit and easy layering piece. Reflective taping down the side of the leg adds interest. Side pockets at waist for storage. Swoosh design trademark at upper left leg. 12" leg zips. Hip width: 22.75", Inseam length: 31" (size medium).

FABRIC: Body: 100% polyester. Lining: 100% polyester.

010	Black/(Flint Grey)	341	Dark Green/(Flint Grey)	419	Navy/(Flint Grey)
493	Royal/(Flint Grey)	545	Purple/(Flint Grey)	610	Cardinal/(Flint Grey)
657	Scarlet/(Flint Grey)				

STORM-FIT



384431

CUSTOM CLASSIC VISOR

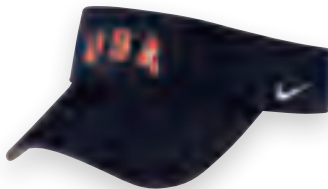
\$13.00

SIZES: One Size Fits Most

Three-panel construction, structured cotton visor with hook and loop closure and 40mm bill curve.

See custom options page

CUSTOM



102700

STOCK CLASSIC VISOR

\$13.00

SIZES: One Size Fits Most

Three-panel construction, structured cotton visor with hook and loop closure and 40mm bill curve.

010	Black/(White)	100	White/(Black)	201	Chino/(White)
341	Dark Green/(White)	419	Navy/(White)	493	Game Royal/(White)
545	Purple/(White)	610	Cardinal/(White)	657	Scarlet/(White)





415177 | WMNS NIKE AIR UNIFY PRO \$70.00

SIZES: 5-12 **OFFER DATE:** C/O

Strategically designed for fastpitch softball. Designed for the athlete looking for comfort and performance.

UPPER: A comfortable blend of synthetics creates a form fitting women's cleat, molded drag cap provides toe protection and durability.

MIDSOLE: Full-length Phylon midsole.

OUTSOLE: Power channel allows for longer surface contact during driving phase molded TPU outsole for lightweight comfortable traction.

001 Black/White



415182 | WMNS AIR TEAM DESTROYER 3 \$65.00

SIZES: 5-12, 13, 14 **OFFER DATE:** 10/1

The first true women's turf shoe. Designed for the competitive athlete looking for comfort and performance.

UPPER: Lightweight and durable synthetic leather with supportive synthetic overlays and midfoot.

MIDSOLE: Phylon midsole with Air-Sole unit for maximum comfort.

OUTSOLE: New rubber bottom Destroyer traction. Integrated flex zones and rubber nubs allow for lightweight traction on all turf conditions.

010 Black/Black-White

100 White/Metallic Silver-Black

NEW



BF1437 | N1 ATHENA 12.50" BASKET WEB \$65.00

SIZES: REGULAR **OFFER DATE:** 10/1

Advanced, articulated Nike Air bag curves from the upper palm to the index finger for no-sting impact control • Game-Ready oiled Steerhide is soft, durable and holds its structure, with reinforced anti-abrasion edges • Full-grain leather lacing for strength and durability • Dri-FIT technology moisture-wicking fabric finger linings help keep hands dry and comfortable • Basket web is strong, durable and versatile

021 Black/Brown/(White)

NEW



BT0644 | AERO ATHENA COMPOSITE (2011) \$275.00

SIZES: 30/20, 33/23, 34/24, 31/21, 32/22 **OFFER DATE:** C/O

Advanced-performance, multi-wall fastpitch bat • Multi-Wall Cross-React Carbon Composite creates an explosive bat/ball collision • Power Belt Technology maximizes the size of the sweet spot • Extended barrel profile expands hitting area and sweet spot • Patented Aero-Cap is 3% more aerodynamic than traditional cupped-end bats for increased bat speed and additional power • Durable automotive clearcoat • -10 length-to-weight ratio, 2 1/4" barrel diameter, fastpitch certified ASA 2004, USSSA BPF 1.20, NSA, and ISF BPF 1.20 • Cushioned synthetic-leather grip offers exceptional feel and durability

110 White/White/(Black)

NEW



GB0309 | IMARA \$20.00

SIZES: S, M, L, XL **OFFER DATE:** C/O

Competitive/recreational fastpitch batting gloves • Genuine leather palm offers exceptional grip and feel • Ventilated mesh helps keep hands cool and comfortable • Adjustable elastic wristband secures fit

151 White/(White)

NEW



BS0122 | VAPOR BAT BAG \$40.00

SIZES: MISC **OFFER DATE:** C/O

Backpack-style carry system with padded back panel balances loads evenly and features adjustable padded straps for comfort • Padded three-bat sleeve, fence hook, dugout organizer flap, mesh locker pouch, shoe compartment • Main Compartment holds a helmet, fielding glove and other equipment • 600 D polyester with coated water and scuff-resistant bottom, rugged extra large zippers

058 Black/Silver

Team Customer Service: 1-877-235-6453
Fax: (503) 532-6708
Customer Affairs: 1-800-344-6453

06/11 20K GAC - SPRING 2012 TEAM FAST PITCH FLYER
© Nike, Inc. 2011. All rights reserved.
Price: Suggested Retail

