

**WOMEN'S
TRAINING** 



453181

WMNS LEGEND S/S TEE

\$25.00

SIZES: XS, S, M, L, XL, 2XL

OFFER DATE: 12/01/11
END DATE: 12/01/14

Dri-FIT fabric wicks away sweat to help keep you comfortable and dry. Short-sleeve construction is ideal for a variety of training conditions. Neck tape added for durability and comfort. Swoosh design trademark at upper left chest. Body width: 18.75", Body length: 26.25" (size medium).

FABRIC: 100% polyester.

010 Black/(Cool Grey)	100 White/(Cool Grey)	260 Onyx Heather/(Black)
341 Dark Green/(Cool Grey)	419 Navy/(Cool Grey)	448 Light Blue/(Cool Grey)
493 Royal/(Cool Grey)	545 Purple/(Cool Grey)	610 Cardinal/(Cool Grey)
657 Scarlet/(Cool Grey)	667 Shy Pink/(Cool Grey)	669 Deep Maroon/(Cool Grey)
698 Crimson/(Cool Grey)	727 Bright Gold/(Cool Grey)	783 Vegas Gold/(Cool Grey)
802 Desert Orange/(Cool Grey)	888 University Orange/(Cool Grey)	

Youth #453189 / S-XL / \$22.00 / Body width: 17.75", Body length: 23.5" (size medium)

DRI-FIT 



453182

WMNS LEGEND L/S TEE

\$28.00

SIZES: XS, S, M, L, XL, 2XL

OFFER DATE: 12/01/11
END DATE: 12/01/14

Dri-FIT fabric wicks away sweat to help keep you comfortable and dry. Long-sleeve construction is ideal for a variety of training conditions. Neck tape added for durability and comfort. Swoosh design trademark at upper left chest. Body width: 18.75", Body length: 26.25" (size medium).

FABRIC: 100% polyester.

010 Black/(Cool Grey)	100 White/(Cool Grey)	260 Onyx Heather/(Black)
341 Dark Green/(Cool Grey)	419 Navy/(Cool Grey)	448 Light Blue/(Cool Grey)
493 Royal/(Cool Grey)	545 Purple/(Cool Grey)	610 Cardinal/(Cool Grey)
657 Scarlet/(Cool Grey)	667 Shy Pink/(Cool Grey)	669 Deep Maroon/(Cool Grey)
698 Crimson/(Cool Grey)	727 Bright Gold/(Cool Grey)	783 Vegas Gold/(Cool Grey)
802 Desert Orange/(Cool Grey)	888 University Orange/(Cool Grey)	

DRI-FIT



410626 NIKE PRO - CORE TIGHT (COMPRESSION) SLEEVELESS V-NECK \$28.00

SIZES: XS, S, M, L, XL, 2XL **OFFER DATE:** 06/01/10
END DATE: 06/01/13

Dri-FIT poly spandex top Nike Pro fitted sleeveless V-neck. Body-skimming top with raglan arm-hole and backwards wrapping side seams. Pop color stitch and inside neck band on fashion colorways. #3 Swoosh design trademark heat transfer. Body width: 15.25", Body length: 25" (size medium).

FABRIC: Body (solid): Dri-FIT 170 g. 84% polyester/16% spandex. Body (heather): Dri-FIT 167 g. 84% polyester/16% spandex.

010 Black/(White)	091 Carbon Heather/(White)	100 White/(Cool Grey)
341 Dark Green/(White)	419 Navy/(White)	493 Royal/(White)
545 Purple/(White)	610 Cardinal/(White)	657 Scarlet/(White)
669 Dark Maroon/(White)	783 Vegas Gold/(White)	

DRI-FIT **COMPRESSION**



410625 NIKE PRO - CORE TIGHT (COMPRESSION) L/S V-NECK \$35.00

SIZES: XS, S, M, L, XL, 2XL **OFFER DATE:** 06/01/10
END DATE: 06/01/13

Dri-FIT poly spandex top Nike Pro fitted long-sleeve V-neck. Body-skimming top with raglan arm-hole and backwards wrapping side seams. Pop color stitch and inside neck band on fashion colorways. #3 Swoosh design trademark heat transfer. Body width: 15.25", Body length: 25" (size medium).

FABRIC: Body (solid): Dri-FIT 170 g. 84% polyester/16% spandex. Body (heather): Dri-FIT 167 g. 84% polyester/16% spandex.

010 Black/(White)	091 Carbon Heather/(White)	100 White/(Cool Grey)
341 Dark Green/(White)	419 Navy/(White)	493 Royal/(White)
545 Purple/(White)	610 Cardinal/(White)	657 Scarlet/(White)
669 Dark Maroon/(White)	727 Bright Gold/(White)	783 Vegas Gold/(White)
810 Orange/(White)		

DRI-FIT **COMPRESSION**



444116 NIKE PRO - THERMAL MOCK \$50.00

SIZES: XXS, XS, S, M, L, XL **OFFER DATE:** 09/01/11
END DATE: 09/01/14

It's cold outside but she's still training for her sport. Pro thermal mock is the ultimate layering solution for our athlete. Body fabric is a Dri-FIT brushed spandex jersey. Keeps her warm and she can move in it. Seams shifted to the back for comfort, thumbholes for added warmth, and underarm gussets for mobility. Body width: 17.5", Body length: 26" (size medium).

FABRIC: 88% polyester/12% spandex.

010 Black/(White)	063 Grey Heather/(White)	100 White/(Black)
341 Dark Green/(White)	419 Navy/(White)	493 Royal/(White)
545 Purple/(White)	610 Cardinal/(White)	657 University Red/(White)
669 Dark Maroon/(White)		

DRI-FIT



410633NIKE PRO FITTED S/S V-NECK\$30.00

SIZES: XS, S, M, L, XL, 2XLOFFER DATE: 06/01/10
END DATE: 06/01/13

Dri-FIT poly spandex top Nike Pro fitted short-sleeve V-neck. Body-skimming top with raglan arm-hole and backwards wrapping side seams. Pop color stitch and inside neck band on fashion colorways. #3 Swoosh design trademark heat transfer. Body width: 17.5", Body length: 26" (size medium).

FABRIC: Body (solid): Dri-FIT 170 g. 84% polyester/16% spandex. Body (heather): Dri-FIT 167 g. 84% polyester/16% spandex.

010 Black/(White)	091 Carbon Heather/(White)	100 White/(Cool Grey)
341 Dark Green/(White)	419 Navy/(White)	493 Royal/(White)
545 Purple/(White)	610 Cardinal/(White)	657 Scarlet/(White)
669 Dark Maroon/(White)	727 Bright Gold/(White)	783 Vegas Gold/(White)
810 Orange/(White)		

DRI-FITFITTED



410624NIKE PRO HYPERCOOL RACER-BACK TANK\$35.00

SIZES: XS, S, M, L, XL, 2XLOFFER DATE: 06/01/10
END DATE: 06/01/13

Nike Pro Hypercool racer-tank V-neck. Body skimming fit with bonded mesh panel in the center back for maximum ventilation. Contrast color to highlight this innovation appeal to the athlete. Nike Pro branding at inside neck band. #3 heat transfer Swoosh design trademark. Body width: 17", Body length: 24.75" (size medium).

FABRIC: Body: 84% polyester/16% spandex. Side panel: 80% polyester/20% spandex. Back panel: 81% polyester/19% spandex.

012 Black/Black/White/(White)	100 White/White/White/(Cool Grey)	420 Navy/Navy/White/(White)
494 Royal/Royal/White/(White)	658 Scarlet/Scarlet/White/(White)	

DRI-FIT



410631NIKE PRO BRA\$30.00

SIZES: XS, S, M, L, XL, 2XLOFFER DATE: 06/01/10
END DATE: 06/01/13

New Dri-FIT Nike Pro compression bra with updated fit and fabrication. Revised body shape for improved support. Bonded seam on front snap, side exterior seam bonded seams. The perfect bra for every activity and motion with its compression fit which provides excellent support. Every detail is carefully considered including the flat and clean finished seams. Lastly, this great piece is hit with the Nike Pro badge at center back to let the athlete know its authenticity. Swoosh design trademark at center chest. Body width: 14", Front Body length: 6.5" (size medium).

FABRIC: Body: 88% polyester/12% spandex.

010 Black/(White)	091 Carbon Heather/(White)	100 White/(Cool Grey)
419 Navy/(White)	657 Scarlet/(White)	

DRI-FIT



410620 | PHANTOM PERFORMANCE SHORT

\$40.00

SIZES: XS, S, M, L, XL, 2XL

OFFER DATE: 06/01/10
END DATE: 06/01/13

High performance fabrication comes together in this stylish short designed for high mobility workouts. The outer layer features a stretch woven quick dry fabric that will keep up with her through the agility ladder and power ball tosses. The inner layer features a Dri-FIT fabric compression short with seams oriented away from the body to avoid irritation and chaffing. This compression short offers the athlete complete coverage through a wide range of movements and a pop of color as she lunges and twists. The Just Do It. trademark waistband provides the perfect motivation and style to complete the garment. Hip width: 22", Inseam length: 4" (size medium).

FABRIC: Body: Dri-FIT 137 g. 84% polyester/16% spandex. Lining: Dri-FIT 240 g. 92% polyester/8% spandex.

010 Black/Cool Grey/(Cool Grey)	419 Navy/Cool Grey/(Cool Grey)	493 Royal/Cool Grey/(Cool Grey)
657 Scarlet/Cool Grey/(Cool Grey)		

DRI-FIT



243438 | WMNS RACE SHORT

\$28.00

SIZES: XS, S, M, L, XL, 2XL

OFFER DATE: 12/01/07
END DATE: 12/01/13

Two-color race short with contrast color down side and elastic waistband. Dri-FIT fabric liner. Embroidered Swoosh design trademark at lower left hem. Hip width: 21.75" (size medium), Inseam length: 3" (all sizes).

FABRIC: Body: 100% polyester. Insert: 95% polyester/5% spandex.

012 Black/White/(White)	342 Dark Green/White/(White)	420 Navy/White/(White)
494 Royal/White/(White)	546 Purple/White/(White)	612 Cardinal/White/(White)
658 Scarlet/White/(White)		

DRI-FIT



410623 | FRESH MESH 5" FIELD SHORT

\$30.00

SIZES: XS, S, M, L, XL, 2XL

OFFER DATE: 06/01/10
END DATE: 06/01/13

New standard in core excellence this short inspired by field sports will become a staple of the field, gym and track. Open hole mesh construction makes this piece both light and breathable. Taping details give a classic feel that will never go out of style. The 5" inseam provides complete coverage through all athletic movements. Swoosh design trademark embroidered at left leg. Hip width: 23.25", Inseam length: 5" (size medium).

FABRIC: Body: 100% polyester.

012 Black/White/(White)	212 Anthracite/White/(White)	342 Dark Green/White/(White)
420 Navy/White/(White)	494 Royal/White/(White)	546 Purple/White/(White)
612 Cardinal/White/(White)	658 Scarlet/White/(White)	

DRI-FIT



508929

CORE 5” COMPRESSION SHORT

\$28.00

SIZES: XS, S, M, L, XL, 2XL

OFFER DATE: 06/01/10
END DATE: 06/01/13

Dri-FIT polyester spandex Nike Pro compression short. Shiny elastic waistband with Nike Pro branding. #3 Swoosh design trademark heat transfer. Nike Pro jock tag at back center waist. Flat seams for comfort and fit. 5" inseam (size medium) can be worn as a base layer and is an essential piece in every athlete's wardrobe. Hip width: 14", Inseam length: 5" (size medium).

FABRIC: Body: Dri-FIT 230 g. 82% polyester/18% spandex.

010 Black/(White)	091 Carbon Heather/(Black)	100 White/(Cool Grey)
419 Navy/(White)		

DRI-FIT

COMPRESSION



508930

CORE 7” COMPRESSION SHORT

\$30.00

SIZES: XS, S, M, L, XL, 2XL

OFFER DATE: 06/01/10
END DATE: 06/01/13

Dri-FIT polyester spandex Nike Pro compression short. Shiny elastic waistband with Nike Pro branding. #3 Swoosh design trademark heat transfer. Nike Pro jock tag at back center waist. Flat seams for comfort and fit. 7" inseam (size medium) can be worn as a base layer and is an essential piece in every athlete's wardrobe. Hip width: 14", Inseam length: 7" (size medium).

FABRIC: Body: 82% polyester/18% spandex.

010 Black/(White)	091 Carbon Heather/(Black)	100 White/(Cool Grey)
419 Navy/(White)		

DRI-FIT

COMPRESSION



392950 | WMNS FRANCHISE WARM-UP JACKET

\$70.00*

SIZES: S, M, L, XL, 2XL

OFFER DATE: 09/01/10

*15% upcharge for 3XL, MT, LT, XLT, 2XLT, 3XLT

END DATE: 09/01/13

Knit long-sleeve, full-zip warm-up jacket, with shadow stripe contrast chest inset, front zipper pockets, Nike Plus enabled in left side pocket. Rib knit collar, cuffs and waistband. Embroidered Swoosh design trademark at right chest. Body width: 21.5", Body length: 24.75" (size medium), Tall Body length: +2.375", Tall Sleeve length: +2.375" (all sizes).

FABRIC: Body: 100% polyester.

012 Black/White/(White)	342 Dark Green/White/(White)	420 Navy/White/(White)
494 Royal/White/(White)	546 Purple/White/(White)	612 Cardinal/White/(White)
658 Scarlet/White/(White)		



392951 | WMNS FRANCHISE WARM-UP PANT

\$60.00*

SIZES: S, M, L, XL, 2XL

OFFER DATE: 09/01/10

*15% upcharge for 3XL, MT, LT, XLT, 2XLT, 3XLT

END DATE: 09/01/13

Knit warm-up pant, contrast shadow stripe side panels, drawcord waistband, front zipper pockets, and 10" leg zippers. Embroidered Swoosh design trademark at left front. Hip width: 21.75", Inseam length: 31" (size medium), Tall Inseam length: +2.375" (all sizes).

FABRIC: Body: 100% polyester.

012 Black/White/(White)	342 Dark Green/White/(White)	420 Navy/White/(White)
494 Royal/White/(White)	546 Purple/White/(White)	612 Cardinal/White/(White)
658 Scarlet/White/(White)		



378278

WMNS DEFIANCE JACKET

\$65.00

SIZES: XS, S, M, L, XL, 2XL

OFFER DATE: 06/01/10
END DATE: 06/01/13

Storm-FIT 1 poly taffeta long sleeve full-zip jacket. Fully lined with mesh with taffeta lined sleeve. Easy fit, underarm gussets for mobility. Rib at hem and at cuffs. Elongated neck for warmth. Packable zip hood. Cool embossed fabric on front for a fresh look. Front pockets that allow easy storage for her keys or ID cards. Nike Plus enabled in left front pocket. Reflective taping at center front zipper and center back adds extra style and interest. Swoosh design trademark at upper right chest. Perfect jacket for cool spring mornings into evening practices. Body width: 21.25", Body length: 25" (size medium).

FABRIC: Body/Rib/Lining: 100% polyester.

010 Black/(Flint Grey)	419 Navy/(Flint Grey)	341 Dark Green/(Flint Grey)
493 Royal/(Flint Grey)	545 Purple/(Flint Grey)	610 Cardinal/(Flint Grey)
657 Scarlet/(Flint Grey)		

STORM-FIT



378279

WMNS DEFIANCE PANT

\$55.00

SIZES: XS, S, M, L, XL, 2XL

OFFER DATE: 06/01/10
END DATE: 06/01/13

Storm-FIT 1 mesh lined pant offers long iconic gusset at inner leg for comfort. Cool embossed fabric on back leg panels and inner leg. Lined in mesh to the knee and lower leg lined in self fabric at hem for protection as she trains on and off the field. Full elastic waistband with drawcord makes for a better fit and easy layering piece. Reflective taping down the side of the leg adds interest. Side pockets at waist for storage. Swoosh design trademark at upper left leg. 12" leg zips. Hip width: 22.75", Inseam length: 31" (size medium).

FABRIC: Body: 100% polyester. Lining: 100% polyester.

010 Black/(Flint Grey)	341 Dark Green/(Flint Grey)	419 Navy/(Flint Grey)
493 Royal/(Flint Grey)	545 Purple/(Flint Grey)	610 Cardinal/(Flint Grey)
657 Scarlet/(Flint Grey)		

STORM-FIT



337295

WMNS CLASSIC FLEECE HOODY

\$50.00*

SIZES: XS, S, M, L, XL, 2XL
*15% upcharge for 3XL, ST, MT, LT, XLT, 2XLT

OFFER DATE: 06/01/09
END DATE: 06/01/13

Women's Specific Fit. Long-sleeve fleece hood with "V" at center front neck. Knit rib waistband/side-panel. Embroidered Swoosh design trademark located at upper right chest. Body width: 21.25", Body length: 25.25" (size medium), Tall Body length: +2.375", Tall Sleeve length: +2.375" (all sizes).

FABRIC: Body: 9.6 oz. 80% cotton/20% polyester. Rib: 95% cotton/5% spandex.

010 Black/(White)	075 Sport Grey Heather/(Black)	419 Navy/(White)
493 Royal/(White)	657 Scarlet/(White)	



337296

WMNS CLASSIC FLEECE PANT

\$40.00*

SIZES: XS, S, M, L, XL, 2XL
*15% upcharge for 3XL, ST, MT, LT, XLT, 2XLT

OFFER DATE: 06/01/09
END DATE: 06/01/13

Women's Specific Fit. Fleece pant with embroidered Swoosh design trademark at left hip. Draw-cord waistband for adjustable fit and open bottom hem. Hip width: 21.5", Inseam length: 32" (size medium), Tall Inseam length: +2.375" (all sizes).

FABRIC: Body: 9.6 oz. 80% cotton/20% polyester. Rib: 95% cotton/5% spandex.

010 Black/(White)	075 Sport Grey Heather/(Black)	419 Navy/(White)
493 Royal/(White)	657 Scarlet/(White)	



361053

WMNS L/S TRAINING TOP

\$65.00

SIZES: S, M, L, XL
US Team Sports Fit

OFFER DATE: 01/01/10
END DATE: 12/01/14

Updated design. Dri-FIT fabric technical hooded training top with four-way mechanical stretch, half-zip front and vented back panels for thermal regulation. Swoosh design trademark on right chest. Body width: 20", Body length: 26" (size medium).

FABRIC: Body: 92% polyester/8% spandex. Insets: 95% polyester/5% spandex.

018 Black/Silver/(Silver)	214 Anthracite/Silver/(Silver)	346 Dark Green/Silver/(Silver)
424 Navy/Silver/(Silver)	499 Royal/Silver/(Silver)	664 Scarlet/Silver/(Silver)

DRI-FIT



379185 | WMNS QUARTER-ZIP PERFORMANCE THERMAL TOP \$60.00

SIZES: S, M, L, XL **OFFER DATE:** 06/01/10
US Team Sports Fit **END DATE:** 12/01/14

Long-sleeve fl-zip performance fleece pull-over top. Therma-FIT technical fleece with Dri-FIT mesh underarm and side panels for ventilation. 2x2 knit rib at cuffs for a snug fit. No sew inside music pocket. Contrast top stitching. #3 embroidered Swoosh design trademark at right chest. Body width: 20.5", Body length: 26.75" (size medium).

FABRIC: 100% polyester.

010 Black/(Silver)	060 Anthracite/(Silver)	341 Dark Green/(Silver)
419 Navy/(Silver)	493 Royal/(Silver)	610 Cardinal/(Silver)
657 Scarlet/(Silver)	669 Dark Maroon/(Silver)	

DRI-FIT



476405 | WMNS FULL-ZIP POLY FLEECE HOODY \$65.00

SIZES: S, M, L, XL **OFFER DATE:** 06/01/12
END DATE: 06/01/15

Dri-FIT full-zip hoody with poly knit fabric contains thermal properties which help to keep her warm. Hood provides warmth for training outside and also features a three piece construction for enhanced fit and mobility. Drawcords on the hood help to keep in place. Kangaroo pocket with mesh lining for added storage. Rib at cuff with thumbholes and rib also at hem for a sporty look and feel. Body width: 20.75", Body length: 27.5" (size medium).

FABRIC: 100% polyester.

010 Black/(White)	060 Anthracite/(White)	100 White/(Black)
341 Dark Green/(White)	419 Navy/(White)	493 Royal/(White)
610 Cardinal/(White)	657 Scarlet/(White)	669 Dark Maroon/(White)

DRI-FIT



378280 | WMNS TECH FLEECE PANT \$45.00

SIZES: XS, S, M, L, XL, 2XL **OFFER DATE:** 06/01/10
END DATE: 06/01/13

Keep yourself warm in these Therma fleece open hem pants with front pockets. Rib waistband with a flat drawcord for adjustability. Contrast side seam stitching and 10" leg zips. Embroidered swoosh design trademark at left mid thigh. Hip width: 21.5", Inseam length: 32" (size medium).

FABRIC: Body: 100% polyester. Insets: 97% polyester/3% spandex.

010 Black/(White)	060 Anthracite/(White)	341 Dark Green/(White)
419 Navy/(White)	493 Royal/(White)	610 Cardinal/(White)
657 Scarlet/(White)	670 Dark Maroon/(White)	



379186 | WMNS MYSTIFI WARM-UP JACKET

\$65.00*

SIZES: XS, S, M, L, XL, 2XL

OFFER DATE: 06/01/10

*15% upcharge for MT, LT, XLT, 2XLT

END DATE: 06/01/14

Knit long-sleeve full-zip warm-up jacket. Dri-FIT double knit piqué with knit-in dot pattern, 2x2 knit rib at collar, waist and cuffs. Higher collar height for added warmth, front pockets with zipper closures, Nike Plus enabled in left pocket, #3 embroidered Swoosh design trademark at right front. Body width: 19", Body length: 26" (size medium), Tall Body length: +2.375", Tall Sleeve length: +2.375" (all sizes).

FABRIC: Body: 100% polyester.

012 Black/White/(White)	342 Dark Green/White/(White)	420 Navy/White/(White)
494 Royal/White/(White)	546 Purple/White/(White) Not shown	612 Cardinal/White/(White)
658 Scarlet/White/(White)		

Youth #379147 / S-XL / \$60.00 / Body width: 17", Body length: 21" (size medium)

DRI-FIT 



378281 | MYSTIFI OPEN BOTTOM PANT

\$50.00*

SIZES: XS, S, M, L, XL, 2XL

OFFER DATE: 06/01/10

*15% upcharge for MT, LT, XLT, 2XLT

END DATE: 06/01/14

Dri-FIT double knit tapered pant with hidden zipper pockets on the front. 2" wide waistband with flat drawcord for adjustability. Full length contrast pique knit fabric inset on side panel. 12" bottom leg zips. #3 embroidered Swoosh design trademark on upper left thigh. Hip width: 21.75, Inseam length: 31" (size medium), Tall Inseam length: +2.375" (all sizes).

FABRIC: Body: 100% polyester.

012 Black/White/(White)	342 Dark Green/White/(White)	420 Navy/White/(White)
494 Royal/White/(White)	546 Purple/White/(White)	612 Cardinal/White/(White)
658 Scarlet/White/(White)		

Youth #379148 / S-XL / \$45.00 / Hip width: 17.75", Inseam length: 25.375" (size medium)

DRI-FIT 



379188

WMNS PASADENA II WARM-UP JACKET

\$45.00

SIZES: S, M, L, XL
US Team Sports Fit

OFFER DATE: 06/01/10
END DATE: 01/01/14

Knit long-sleeve full-zip soccer warm-up jacket. Warp knit with 2x2 knit rib at collar, waist, and cuffs. Higher collar height for added warmth, front pockets, music cord management, #3 embroidered Swoosh design trademark at right front. Body width: 20", Body length: 26" (size medium).

FABRIC: Body: 70g. 100% polyester plain warp knit.

012 Black/White/(White)	342 Dark Green/White/(White)	420 Navy/White/(White)
494 Royal/White/(White)	612 Cardinal/White(white)	658 Scarlet/White/(White)

Youth #379149 / S-XL / \$42.00 / Body width: 17", Body length: 21" (size medium)

Y



379189

WMNS PASADENA II WARM-UP PANT

\$35.00

SIZES: S, M, L, XL
US Team Sports Fit

OFFER DATE: 06/01/10
END DATE: 01/01/14

Knit soccer warm-up pant. Warp knit body with contrast side panels, side pockets, elastic waist with drawcord, side leg zippers, #3 embroidered Swoosh design trademark at left front. Hip width: 21.75", Inseam length: 31" (size medium).

FABRIC: Pant: 70g. 100% polyester plain warp knit.

012 Black/White	420 Navy/White
-----------------	----------------

Youth #379150 / S-XL / \$33.00 / Hip width: 17.75", Inseam length: 25.25" (size medium)

Y



399913

WMNS CLASSIC KNIT JACKET

\$70.00

SIZES: XS, S, M, L, XL
US Team Sports Fit

OFFER DATE: 04/01/11
END DATE: 01/01/14

Full-zip Dri-FIT waffle knit warm-up jacket with mesh underarm insets, higher collar for increased warmth, side front zipper pockets with Nike+ enabled pocket in left front pocket. Contrast piping at front chest and sides. Rib knit cuffs and waistband. Embroidered Swoosh design trademark at upper right front. Body width: 19", Body length: 26" (size medium).

FABRIC: 100% polyester.

012 Black/White/(White)	106 White/Black/(Black)	213 Anthracite/Black/(Black)
342 Dark Green/White/(White)	420 Navy/White/(White)	494 Royal/White/(White)
658 Scarlet/White/(White)		

Youth #399912 / XS-XL / \$60.00 / Body width: 17", Body length: 21" (size medium)

DRI-FIT 



399914

WMNS CLASSIC KNIT PANT

\$50.00

SIZES: XS, S, M, L, XL
US Team Sports Fit

OFFER DATE: 04/01/11
END DATE: 01/01/14

Dri-FIT waffle knit warm-up pant with mesh back knee panels for increased breathability, contrast piping at sides, side seam pockets, and leg zippers. Embroidered Swoosh design trademark at left front. Hip width: 21.75", Inseam length: 31" (size medium).

FABRIC: 100% polyester.

012 Black/White/(White)	106 White/Black/(Black)	213 Anthracite/Black/(Black)
342 Dark Green/White/(White)	420 Navy/White/(White)	494 Royal/White/(White)
658 Scarlet/White/(White)		

Youth #399915 / XS-XL / \$45.00 / Hip width: 17.75", Inseam length: 25.25" (size medium)

DRI-FIT 



399916

WMNS CLASSIC KNIT CAPRI

\$40.00

SIZES: XS, S, M, L, XL
US Team Sports Fit

OFFER DATE: 04/01/11
END DATE: 01/01/14

Dri-FIT waffle knit Capri with mesh back knee panels for increased breathability, contrast piping at sides, side seam pockets. Embroidered Swoosh design trademark at left front. Hip width: 21.75", Inseam length: 16" (size medium).

FABRIC: 100% polyester.

012 Black/White/(White)	213 Anthracite/Black/(Black)	420 Navy/White/(White)
-------------------------	------------------------------	------------------------

Youth #399917 / XS-XL / \$38.00 / Hip width: 17.75", Inseam length: 15" (size medium)

DRI-FIT 



476324 | WMNS AMBASSADOR JACKET

\$125.00*

SIZES: S, M, L, XL, 2XL

OFFER DATE: 06/01/12

*15% upcharge for 3XL

END DATE: 06/01/15

Women's specific full-zip woven jacket. Poly fleece lining to keep the body warm during cooler temperatures. Built-in stow away hood around neck collar. Internal bottom hem elasticized drawcord. Embroidered Swoosh design trademark at upper right chest. Body width: 20.5", Body length: 25.5" (size medium).

FABRIC: 100% polyester.

010 Black/(White)	060 Anthracite/(White)	341 Dark Green/(White)
419 Navy/(White)	493 Royal/(White)	545 Purple/(White)
610 Cardinal/(White)	657 Scarlet/(White)	669 Dark Maroon/(White)



453185 | WMNS NIKE ZOOM RUNNING JACKET

\$70.00

SIZES: XS, S, M, L, XL, 2XL

OFFER DATE: 12/01/11

END DATE: 12/01/14

Wind and water resistant full-zip jacket with Dri-FIT properties. Front zipper has a protective chin guard. Front zipped pockets for secure storage and venting. Elastic binding at sleeve hem and adjustable elastic drawcord at bottom hem allow for a custom fit. Mesh lined back vent helps to regulate your temperature during a run. Reflective heat transfers on front zipper and upper back allow for added visibility. Reflective Swoosh design trademark on upper right chest. Body width: 20", Body length: 27.5" (size medium).

FABRIC: 100% polyester.

010 Black/(Reflective Silver)	060 Anthracite/(Reflective Silver)	341 Dark Green/(Reflective Silver)
419 Navy/(Reflective Silver)	657 Scarlet/(Reflective Silver)	



509176UP AND UNDER MESH TANK\$30.00*

SIZES: S, M, L, XL, 2XL

OFFER DATE: 09/01/12

*15% upcharge for 3XL, LT, XLT, 2XLT, 3XLT

END DATE: 09/01/15

Tricot warp knit mesh reversible racer-back tank with wome's specific fit. Contrast color on side panels and upper shoulders. Nike team sports jock tag on lower left hem and embroidered Swoosh design trademark on reversed back yoke. Body width: 19.25", Body length: 26.5" (size medium). Tall body length: +2.375" (all sizes).

FABRIC: Body: Color: 100% nylon. White: 100% polyester..

012 Black/White/(Black)	342 Dark Green/White/(Dark Green)	420 Navy/White/(Navy)
494 Royal/White/(Royal)	546 Purple/White/(Purple)	610 Cardinal/White/(Cardinal)
658 Scarlet/White/(Scarlet)	670 Dark Maroon/White/(Dark Maroon)	

NEW



436652UP AND UNDER SHORT\$28.00*

SIZES: XS, S, M, L, XL, 2XL

OFFER DATE: 09/01/11

*15% upcharge for 3XL

END DATE: 09/01/13

Tricot warp knit mesh short with contrast side taping. 2" wide waistband with drawcord for adjust-ability. Embroidered Swoosh design trademark at lower left leg. Hip width: 23.25" (size medium), Inseam length: 9" (all sizes).

FABRIC: 100% polyester.

012 Black/White/(White)	057 Grey/White/(White)	342 Dark Green/White/(White)
420 Navy/White/(White)	453 Light Blue/White/(White)	494 Royal/White/(White)
546 Purple/White/(White)	612 Cardinal/White/(White)	658 Scarlet/White/(White)
670 Dark Maroon/White/(White)	784 Vegas Gold/White/(White)	821 Orange/White/(White)



359937WMNS COACHES THREE-POCKETED SHORT\$35.00

SIZES: XS, S, M, L, XL, 2XL

OFFER DATE: 12/01/09

END DATE: 12/01/12

Dri-FIT circular knit body fabric. Brushed elastic Nike trademark design waistband with drawcord. Inside waistband will be Anthracite for ALL colorways. Lower leg contrast insets. Two front pock-ets and a back right zipper pocket. Swoosh design trademark on left leg. Hip width: 22.25" (size medium), Inseam length: 7" (all sizes).

FABRIC: 100% polyester.

012 Black/White/(White)	212 Anthracite/White/(Black)	342 Dark Green/White/(White)
420 Navy/White/(White)	494 Royal/White/(White)	612 Cardinal/White/(White)
658 Scarlet/White/(White)		

DRI-FIT



476325 | WMNS GUNG-HO POLO**\$35.00*****SIZES:** XS, S, M, L, XL, 2XL**OFFER DATE:** 06/01/12

*15% upcharge for 3XL

END DATE: 06/01/15

Women's specific fit. Double knit piqué fabric short-sleeve polo with self-fabric collar. Contrast piping detail at shoulder seam and collar. 3 button front placket. Suggested placement for embroidered team logo at left chest. Embroidered Swoosh design trademark at upper right chest. Body width: 18.5", Body length: 26.25" (size medium).

FABRIC: 100% polyester.

012 Black/White/(White)	100 White/Black/(Black)	212 Anthracite/White/(White)
342 Dark Green/White/(White)	420 Navy/White/(White)	453 Light Blue/White/(White)
494 Royal/White/(White)	546 Purple/White/(White)	612 Cardinal/White/(White)
658 Scarlet/White/(White)	670 Dark Maroon/White/(White)	784 Vegas Gold/White/(Black)
821 Orange/White/(Orange)		

DRI-FIT**418642 | WMNS S/S POLO II****\$48.00****SIZES:** XS, S, M, L, XL, 2XL**OFFER DATE:** 06/01/11**END DATE:** 06/01/14

Three-button placket short-sleeve polo. Dri-FIT fabric technology for moisture management. Swoosh design trademark at right chest. Body width: 18.5", Body length: 26.25" (size medium).

FABRIC: 90% polyester/10% spandex.

010 Black/(White)	100 White/(Black)	341 Dark Green/(White)
419 Navy/(White)	493 Royal/(White)	610 Cardinal/(White)
657 Scarlet/(White)	669 Dark Maroon/(White)	

DRI-FIT**418643 | WMNS L/S POLO II****\$60.00****SIZES:** XS, S, M, L, XL, 2XL**OFFER DATE:** 06/01/11**END DATE:** 06/01/14

Three-button placket long-sleeve polo. Dri-FIT fabric technology for moisture management. Swoosh design trademark at right chest. Body width: 18.5", Body length: 26.25" (size medium).

FABRIC: 90% polyester/10% spandex.

010 Black/(White)	100 White/(Black)	341 Dark Green/(White)
419 Navy/(White)	493 Royal/(White)	610 Cardinal/(White)
657 Scarlet/(White)	669 Dark Maroon/(White)	

DRI-FIT

359936

WMNS ELITE QUARTER-ZIP L/S POLO

\$60.00*

SIZES: S, M, L, XL, 2XL

OFFER DATE: 12/01/09

*15% upcharge for 3XL

END DATE: 12/01/12

Poly spandex long-sleeve quarter-zip polo with contrast back piping. Embroidered Swoosh design trademark on upper right chest. Body width: 19.25", Body length: 27.5" (size medium).

FABRIC: 86% polyester/14% spandex.

010	Black/White/(White)	060	Anthracite/White/(White)	100	White/White/(Black)
341	Dark Green/White/(White)	419	Navy/White/(White)	494	Royal/White/(White)
545	Purple/White/(White)	610	Cardinal/White/(White)	658	Scarlet/White/(White)

DRI-FIT



418644

WMNS COACHES SHORT

\$45.00

SIZES: 4, 6, 8, 10, 12, 14, 16, 18

OFFER DATE: 06/01/11

END DATE: 06/01/14

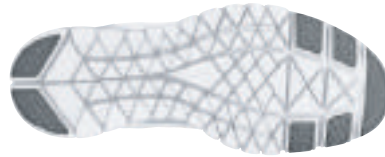
Dri-FIT cotton poly short with 5 shaped belt loops and a standard brass center front zipper with a two button fly extension closure. 2" wide waistband, two front pockets, two back pockets. Embroidered tonal Swoosh design trademark on back right pocket. Hip width: 20.75" (size 10), Inseam length: 8" (all sizes).

FABRIC: 61% cotton/39% polyester.

010	Black/Black	221	Chino/Chino
-----	-------------	-----	-------------

DRI-FIT





525151 | WMNS AIR PEGASUS+ 29 \$100.00

SIZES: 5-12 OFFER DATE: C/O

The cushioning, ride and women's-specific fit that neutral runners expect from this classic Nike running franchise; with an even better fit. 9.2 oz (Women's size 8).

UPPER: Women's-specific design with breathable mesh, targeted no-sew overlays, a Nike Flywire technology midfoot panel and notched innersleeve for optimal comfort and support.

MIDSOLE: Full-length Cushlon foam works with a Nike Zoom unit in the heel for soft, responsive cushioning and great forefoot flexibility.

OUTSOLE: BRS 1000 carbon rubber heel with an environmentally preferred rubber, Waffle outsole throughout for durable traction. Gender-specific flex grooves.

001 Black/Black-Summit White	100 Summit White/Black-Neutral Grey
103 Summit White/Black-Deep Forest	104 Summit White/Black-Midnight Navy
105 Summit White/Black-Maroon	106 Summit White/Black-Varsity Red
108 Summit White/Black-Safety Orange	114 Summit White/Black-Varsity Royal
116 Summit White/Black-Varsity Crimson	118 Summit White/Black-Desert Orange
124 Summit White/Black-University Blue	

NIKE ZOOM



487789 | WMNS NIKE FREE TR FIT 2 \$90.00

SIZES: 5-12 OFFER DATE: C/O

Designed for the female athlete looking to improve lower body strength and flexibility while training for her sport.

UPPER: Engineered foam construction. Asymmetrical internal structural support system for multidirectional movement. Stretch heel counter for ankle mobility.

MIDSOLE: Phylite midsole siped with linear and lateral flex grooves for ultimate multidirectional flexibility and natural motion.

OUTSOLE: Heel and forefoot rubber pods for multidirectional traction and control on all surfaces.

102 White/White-Metallic Silver-Cool Grey

312618 | BENASSI SWOOSH \$22.00

SIZES: 6-18 (Whole) OFFER DATE: C/O

Classic team slide, incredible value.

UPPER: One-piece synthetic upper.

MIDSOLE: Injected Phylon midsole.

OUTSOLE: Injected Phylon outsole.

011 Black/White



BA3198 | NIKE ULTIMATUM MAX AIR MEDIUM DUFFEL \$75.00

SIZES: MISC **OFFER DATE:** C/O

Water-resistant coated material • Tough nailhead dobby polyester • Max Air Curve shoulder strap • Ventilated shoe or wet/dry storage • Insulated water bottle pocket • Multiple pockets for organization • Appliquéd Swoosh design trademark

030 Black/Black/(Black)



BA3232 | BRASILIA 5 LARGE DUFFEL/GRIP \$45.00

SIZES: MISC **OFFER DATE:** C/O

Tough 600D polyester • Durable 300D polyester • Detachable shoulder strap • Ventilated shoe or wet/dry storage • Secure zip pocket • Limited lifetime guarantee • Screened Swoosh design trademark

DIMENSIONS: 30.5" L x 14" W x 14" H / 5978 cu. in.

067 Black/Black/(White) 468 Game Royal/Black/(Black)

472 Midnight Navy/Black/(White) 600 Gym Red/Black/(Black)



BA3233 | BRASILIA 5 MEDIUM DUFFEL/GRIP \$35.00

SIZES: MISC **OFFER DATE:** C/O

Tough 600D polyester • Durable 300D polyester • Detachable shoulder strap • Ventilated shoe or wet/dry storage • Secure zip pocket • Limited lifetime guarantee • Screened Swoosh design trademark

DIMENSIONS: 25.75" L x 12" W x 12" H / 3660 cu. in.

067 Black/Black/(White) 082 Flint Grey/Black/(White)

468 Game Royal/Black/(Black) 472 Midnight Navy/Black/(White)

600 Gym Red/Black/(Black) 606 Spark/Black/(Black)



BA3234 | BRASILIA 5 SMALL DUFFEL/GRIP \$30.00

SIZES: MISC **OFFER DATE:** C/O

Tough 600D polyester • Durable 300D polyester • Detachable shoulder strap • Ventilated shoe or wet/dry storage • Secure zip pocket • Limited lifetime guarantee • Screened Swoosh design trademark

DIMENSIONS: 21"L x 10" W x 10" H / 2501 cu. in.

067 Black/Black/(White) 082 Flint Grey/Black/(White)

468 Game Royal/Black/(Black) 472 Midnight Navy/Black/(White)

600 Gym Red/Black/(Black)



BA3238 | BRASILIA 5 XLG BACKPACK \$45.00

SIZES: MISC **OFFER DATE:** C/O

Large, zippered main compartment / Stores large items securely • Zippered front pocket / Additional storage • Audio pocket with cord portal / Storage • Mesh water bottle pocket / Additional storage • Adjustable shoulder straps / Customized fit • Padded back / Additional comfort • Screened Swoosh design trademark • Limited lifetime guarantee

DIMENSIONS: 20" H x 13.5" W x 9.5D

067 Black/Black/(White)



BA3237 | BRASILIA 5 GYM SACK \$12.00

SIZES: MISC **OFFER DATE:** C/O

75 denier polyester dobby weave • 210D nylon • Drawstring closure / Easy access to contents

DIMENSIONS: 18.5"H x 13.5" W x 4.25" D / 915 cu. in.

067 Black/Black/(White) 082 Flint Grey/Black/(White)

472 Midnight Navy/Black/(White) 600 Gym Red/Black/(Black)



BA3253 | TEAM SALES NUTMEG BACKPACK - MEDIUM \$45.00

SIZES: MISC OFFER DATE: C/O

• Tough 600D polyester • Water-resistant Tarpaulin bottom • Padded shoulder straps
• Padded backpanel • Ventilated shoe pocket • Ball carry up to size 4 • Wet/dry separation • Water-resistant Tarpaulin • Room for all your tournament, match or training gear • Screened Swoosh design trademark

DIMENSIONS: 19" H x 15" W x 10" D / 1952 cu. in.

067 Black/Black/(White)	074 Flint Grey/Black/(White)
472 Midnight Navy/Black/(White)	479 Varsity Royal/Black/(White)
624 Varsity Red/Black/(White)	



BA3183 | CASCADE MESSENGER \$45.00

SIZES: MISC OFFER DATE: C/O

054 Black/Black/(Silver)



3PPK DRI-FIT HALF-CUSHION NO SHOW

\$16.00

Orders accepted in increments of 6 PPK units only

SIZES: MISC

OFFER DATE: C/O

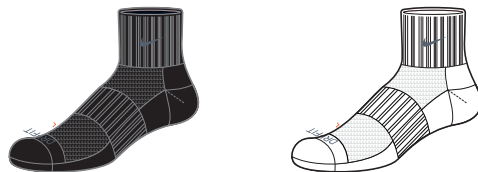
Half-cushioned, medium-density padding / Impact absorption • Dri-FIT fabric / Wicks away moisture to keep feet dry and cool • Arch support / Snug, secure fit • Anatomical left and right / Superior fit and cushioning

FABRIC: 53% polyester/23% nylon/22% cotton/2% spandex.

SIZE: XL sock = M 12-15 shoe size; L sock = M 8-12 shoe size, W 10-13 shoe size; M sock = M 6-8 shoe size, W 6-10 shoe size.

SX4214-001	Black/(Flint Grey)	X-LARGE (M12-15)	\$16.00
SX4214-101	White/(Flint Grey)	X-LARGE (M12-15)	\$16.00
SX4213-001	Black/(Flint Grey)	LARGE (M8-12, W10-13)	\$16.00
SX4213-101	White/(Flint Grey)	LARGE (M8-12, W10-13)	\$16.00
SX4212-001	Black/(Flint Grey)	MEDIUM (M6-8, W6-10)	\$16.00
SX4212-101	White/(Flint Grey)	MEDIUM (M6-8, W6-10)	\$16.00

DRI-FIT



3PPK DRI-FIT HALF-CUSHION QUARTER

\$16.00

Orders accepted in increments of 6 PPK units only

SIZES: MISC

OFFER DATE: C/O

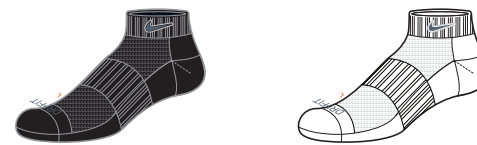
Half-cushioned, medium-density padding / Impact absorption • Dri-FIT fabric / Wicks away moisture to keep feet dry and cool • Arch support / Snug, secure fit • Anatomical left and right / Superior fit and cushioning

FABRIC: 48% polyester/28% nylon/22% cotton/2% spandex.

SIZE: XL sock = M 12-15 shoe size; L sock = M 8-12 shoe size, W 10-13 shoe size; M sock = M 6-8 shoe size, W 6-10 shoe size.

SX4217-001	Black/(Flint Grey)	X-LARGE (M12-15)	\$16.00
SX4217-101	White/(Flint Grey)	X-LARGE (M12-15)	\$16.00
SX4216-001	Black/(Flint Grey)	LARGE (M8-12, W10-13)	\$16.00
SX4216-101	White/(Flint Grey)	LARGE (M8-12, W10-13)	\$16.00
SX4215-001	Black/(Flint Grey)	MEDIUM (M6-8, W6-10)	\$16.00
SX4215-101	White/(Flint Grey)	MEDIUM (M6-8, W6-10)	\$16.00

DRI-FIT



3PPK DRI-FIT HALF-CUSHION LOW CUT

\$16.00

Orders accepted in increments of 6 PPK units only

SIZES: MISC

OFFER DATE: C/O

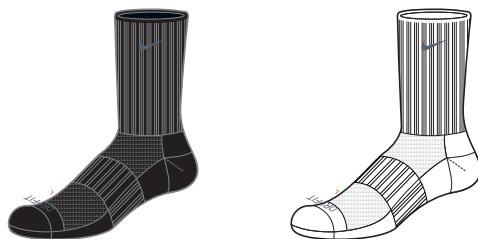
Half-cushioned terry foot / Comfort and shock absorption • Dri-FIT fabric / Wicks away moisture to keep feet dry and cool • Arch support / Snug, secure fit • Anatomical left and right / Superior fit and cushioning

FABRIC: 50% polyester/25% nylon/23% cotton/2% spandex.

SIZE: XL sock = M 12-15 shoe size; L sock = M 8-12 shoe size, W 10-13 shoe size; M sock = M 6-8 shoe size, W 6-10 shoe size.

SX4211-001	Black/(Flint Grey)	X-LARGE (M12-15)	\$16.00
SX4211-101	White/(Flint Grey)	X-LARGE (M12-15)	\$16.00
SX4210-001	Black/(Flint Grey)	LARGE (M8-12, W10-13)	\$16.00
SX4210-101	White/(Flint Grey)	LARGE (M8-12, W10-13)	\$16.00
SX4209-001	Black/(Flint Grey)	MEDIUM (M6-8, W6-10)	\$16.00
SX4209-101	White/(Flint Grey)	MEDIUM (M6-8, W6-10)	\$16.00

DRI-FIT



3PPK DRI-FIT HALF-CUSHION CREW

\$16.00

Orders accepted in increments of 6 PPK units only

SIZES: MISC

OFFER DATE: C/O

Half-cushioned terry foot / Comfort and shock absorption • Dri-FIT fabric / Wicks away moisture to keep feet dry and cool • Arch support / Snug, secure fit • Anatomical left and right / Superior fit and cushioning

FABRIC: 60% polyester/26% nylon/12% cotton/2% spandex.

SIZE: XL sock = M 12-15 shoe size; L sock = M 8-12 shoe size, W 10-13 shoe size; M sock = M 6-8 shoe size, W 6-10 shoe size.

SX4208-001	Black/(Flint Grey)	X-LARGE (M12-15)	\$16.00
SX4208-101	White/(Flint Grey)	X-LARGE (M12-15)	\$16.00
SX4207-001	Black/(Flint Grey)	LARGE (M8-12, W10-13)	\$16.00
SX4207-101	White/(Flint Grey)	LARGE (M8-12, W10-13)	\$16.00
SX4206-001	Black/(Flint Grey)	MEDIUM (M6-8, W6-10)	\$16.00
SX4206-101	White/(Flint Grey)	MEDIUM (M6-8, W6-10)	\$16.00

DRI-FIT



3PPK WMNS DRI-FIT CUSHION NO SHOW

\$16.00

Orders accepted in increments of 6 PPK units only

SIZES: MISC

OFFER DATE: C/O

Half-cushion sandwich terry foot / Comfort and shock-absorption • Dri-FIT fabric / Wicks away moisture to keep feet dry and cool • Anatomical left and right / Superior fit and cushioning • Arch support / Snug, secure fit

FABRIC: 60% polyester/26% nylon/12% cotton/2% spandex.

SHOE SIZE: M sock = M 6-8 shoe size, W 6-10 shoe size.

SX4494-101	White/(Black)	MEDIUM (M6-8, W6-10)	\$16.00
-------------------	---------------	-----------------------------	----------------

DRI-FIT