



# NIKE TEAM WINTER 2012

MEN'S & BOYS'



[NIKETEAM.COM](http://NIKETEAM.COM)





**JUST DO IT.** 

**EVERY  
SEASON.  
EVERY  
SPORT.  
EVERY  
ATHLETE.**





## **BASKETBALL**

- 3 GAME THEATRE
- 4 STOCK UNIFORMS
- 11 TEAM ID UNIFORMS
- 17 MODIFIED UNIFORMS
- 28 DIGITAL QUICK-TURN UNIFORMS
- 31 CUSTOM UNIFORMS
- 40 FOOTWEAR
- 42 EQUIPMENT
- 44 ACCESSORIES

## **WRESTLING**

- 46 TEAM ID UNIFORMS
- 48 DIGITAL QUICK-TURN UNIFORMS
- 50 FOOTWEAR

## **DIGITAL QUICK-TURN**

- 52 BASKETBALL
- 54 WRESTLING & LACROSSE
- 55 CROSS COUNTRY
- 56 SOCCER

## **TRAINING**

- 60 NIKE PRO
- 66 MODIFIED
- 69 FUNDAMENTALS
- 87 COACHES
- 91 FOOTWEAR
- 92 EQUIPMENT
- 94 ACCESSORIES

## **INFORMATION**

SEE WOMEN'S CONTENTS PAGE

**NIKETEAM.COM**

# MEN'S BASKETBALL



## TRAIN

- 1 **PINNACLE MESH 3.0 JERSEY**  
509149 / PAGE 14
- 2 **PINNACLE MESH 3.0 SHORT**  
509148 / PAGE 14



## COMPETE

- 1 **FADEAWAY GAME JERSEY**  
509151 / PAGE 19
- 2 **FADEAWAY GAME SHORT**  
509150 / PAGE 19



## TRAVEL

- 1 **GAME THEATRE JACKET**  
509141 / PAGE 3
- 2 **GAME THEATRE PANT**  
509140 / PAGE 3



509141 | GAME THEATRE JACKET

\$75.00\*

**SIZES:** XS, S, M, L, XL, 2XL

**ORDER DATE:** 04/13/12

\*15% upcharge for 3XL, 4XL, LT, XLT, 2XLT, 3XLT, 4XLT

**DELIVERY DATE:** 09/15/12

Woven long-sleeve full-zip jacket. Contrast color insets across the front chest and sleeves. Welt pockets and embroidered Swoosh design trademark on upper right chest. Body width: 25", Body length: 28.75" (size large). Tall body length: +2.375" (all sizes). Tall sleeve length: +2.375" (all sizes).

**FABRIC:** 100% polyester.

013 Black/Scarlet/White/(White)	014 Black/Royal/White/(White)	016 Black/Vegas Gold/White/(White)
022 Black/Cardinal/White/(White)	031 Black/Orange/White/(White)	051 Pewter/Black/White/(White)
073 Pewter/Navy/White/(White)	074 Pewter/Dark Green/White/(White)	077 Pewter/Royal/White/(White)
078 Pewter/Scarlet/White/(White)	081 Pewter/Purple/White/(White)	421 Navy/Scarlet/White/(White)
422 Navy/Vegas Gold/White/(White)	423 Navy/Bright Gold/White/(White)	436 Navy/Orange/White/(White)

**NEW** FUTURES ONLY



509140 | GAME THEATRE PANT

\$60.00\*

**SIZES:** XS, S, M, L, XL, 2XL

**ORDER DATE:** 04/13/12

\*15% upcharge for 3XL, 4XL, LT, XLT, 2XLT, 3XLT, 4XLT

**DELIVERY DATE:** 09/15/12

Woven warm-up pant with contrast color side paneling, welt pockets, leg zippers, elastic waistband with drawcord and open bottom hem. Embroidered Swoosh design trademark at left front. Hip width: 25", Inseam length: 33" (size large). Tall inseam length: +2.375" (all sizes).

**FABRIC:** 100% polyester.

013 Black/Scarlet/White/(White)	014 Black/Royal/White/(White)	016 Black/Vegas Gold/White/(White)
022 Black/Cardinal/White/(White)	031 Black/Orange/White/(White)	051 Pewter/Black/White/(White)
073 Pewter/Navy/White/(White)	074 Pewter/Dark Green/White/(White)	077 Pewter/Royal/White/(White)
078 Pewter/Scarlet/White/(White)	081 Pewter/Purple/White/(White)	421 Navy/Scarlet/White/(White)
422 Navy/Vegas Gold/White/(White)	423 Navy/Bright Gold/White/(White)	436 Navy/Orange/White/(White)

**NEW** FUTURES ONLY





509144

BASELINE JERSEY

\$35.00\*

SIZES: XS, S, M, L, XL, 2XL

OFFER DATE: 09/01/12

\*15% upcharge for 3XL

END DATE: 01/01/15

Piqué jersey with flat-back mesh side panels featuring two-color taping down the seams of the side panel. Nike Team Sports jock tag at lower left hem. Body width: 20.75", Body length: 31.25" (size large).

Part of Response Program.  
Part of Stock Embellishment Program.

FABRIC: 100% polyester.

012 Black/White	104 White/Cardinal	106 White/Black
107 White/Navy	108 White/Royal	109 White/Scarlet
110 White/Purple	111 White/Dark Green	115 White/Dark Maroon
342 Dark Green/White	420 Navy/White	494 Royal/White
546 Purple/White	612 Cardinal/White	658 Scarlet/White
670 Dark Maroon/White		



509145

BASELINE SHORT

\$35.00\*

SIZES: XS, S, M, L, XL, 2XL

OFFER DATE: 09/01/12

\*15% upcharge for 3XL

END DATE: 01/01/15

Piqué short with flat-back mesh side panels featuring two-color taping down the side panel seams and across the lower side hem, elastic waistband, and drawcord. Swoosh design trademark at upper left hip. Hip width: 29.75", Inseam length: 11.25" (size large).

Part of Response Program.

FABRIC: 100% polyester.

012 Black/White/(White)	104 White/Cardinal/(Cardinal)	106 White/Black/(Black)
107 White/Navy/(Navy)	108 White/Royal/(Royal)	109 White/Scarlet/(Scarlet)
110 White/Purple/(Purple)	111 White/Dark Green/(Dark Green)	115 White/Dark Maroon/(Dark Maroon)
342 Dark Green/White/(White)	420 Navy/White/(White)	494 Royal/White/(White)
546 Purple/White/(White)	612 Cardinal/White/(White)	658 Scarlet/White/(White)
670 Dark Maroon/White/(White)		





509155 | JORDAN WARM-UP JACKET

\$85.00\*

SIZES: XS, S, M, L, XL, 2XL  
\*15% upcharge for 3XL, 4XL, LT, XLT, 2XLT, 3XLT, 4XLT

OFFER DATE: 09/01/12  
END DATE: 09/01/15

Knit, full-zip, long-sleeve warm-up jacket featuring contrast color inset across the front chest and down the sleeves, zipper pockets, and jumpman design trademark logo at upper front right chest. Body width: 26.5", Body length: 30.25" (size large). Tall body length: +2.375" (all sizes). Tall sleeve length: +2.375" (all sizes).

FABRIC: 100% polyester.

012 Black/White/(White)	060 Anthracite/White/(White)	420 Navy/White/(White)
494 Royal/White/(White)	658 Scarlet/White/(White)	

NEW DRI-FIT



509154 | JORDAN WARM-UP PANT

\$75.00\*

SIZES: XS, S, M, L, XL, 2XL  
\*15% upcharge for 3XL, 4XL, LT, XLT, 2XLT, 3XLT, 4XLT

OFFER DATE: 09/01/12  
END DATE: 09/01/15

Knit, open bottom warm-up pant featuring contrast color inset down the side, zipper pockets, side leg zippers, and jumpman design trademark logo at left leg. Hip width: 24.25", Inseam length: 32.25" (size large). Tall inseam length: +2.375" (all sizes).

FABRIC: 100% polyester.

012 Black/White/(White)	060 Anthracite/White/(White)	420 Navy/White/(White)
494 Royal/White/(White)	658 Scarlet/White/(White)	

NEW DRI-FIT





509142 | HUSTLE REVERSIBLE TANK

\$30.00\*

SIZES: S, M, L, XL, 2XL

OFFER DATE: 09/01/12

\*15% upcharge for 3XL, LT, XLT, 2XLT, 3XLT

END DATE: 09/01/15

Reversible mesh jersey. Nike Team Sports jock tag on lower left outer front and embroidered Swoosh design trademark at inner back yoke. Body width: 23.25", Body length: 30" (size large). Tall body length: +2.375" (all sizes).

FABRIC: Color: 100% nylon; White: 100% polyester.

012 Black/White/(Black)	342 Dark Green/White/(Dark Green)	420 Navy/White/(Navy)
494 Royal/White/(Royal)	546 Purple/White/(Purple)	610 Cardinal/White/(Cardinal)
658 Scarlet/White/(Scarlet)	670 Dark Maroon/White/(Dark Maroon)	

Youth #509143 / S-XL / \$28.00 / Body width: 17.5", Body length: 24" (size medium)

NEW

Y



436634 | HYPER ELITE JERSEY

\$50.00\*

SIZES: S, M, L, XL, 2XL  
\*15% upcharge for 3XL

OFFER DATE: 09/01/11  
END DATE: 01/01/14

System of dress game uniform. Double knit fabrication. V-neck design. Contrast printed silicone striping down side panels. Contrast neck band. Nike Team Sports jock tag at lower left hem. Body width: 20.75, Body length: 31.25" (size large).

Part of Stock Embellishment Program.

FABRIC: Body: 100% recycled polyester. Collar: 92% polyester/8% spandex.

012 Black/White	104 White/Cardinal	106 White/Black
107 White/Navy	108 White/Royal	109 White/Scarlet
110 White/Purple	111 White/Dark Green	115 White/Dark Maroon
342 Dark Green/White	420 Navy/White	494 Royal/White
546 Purple/White	612 Cardinal/White	658 Scarlet/White
670 Dark Maroon/White		



436635 | HYPER ELITE SHORT

\$55.00\*

SIZES: S, M, L, XL, 2XL  
\*15% upcharge for 3XL

OFFER DATE: 09/01/11  
END DATE: 01/01/14

System of dress game short. Woven fabrication. 2" gripper elastic waistband with drawcord for adjustability. Contrast printed stripes and laser perforations on side for ultimate ventilation. Swoosh design trademark at lower left hip. Hip width: 25", Inseam length: 11.25" (size large).

FABRIC: Body: 100% recycled polyester.

012 Black/White/(White)	104 White/Cardinal/(Cardinal)	106 White/Black/(Black)
107 White/Navy/(Navy)	108 White/Royal/(Royal)	109 White/Scarlet/(Scarlet)
110 White/Purple/(Purple)	111 White/Dark Green/(Dark Green)	115 White/Dark Maroon/(Dark Maroon)
342 Dark Green/White/(White)	420 Navy/White/(White)	494 Royal/White/(White)
546 Purple/White/(White)	612 Cardinal/White/(White)	658 Scarlet/White/(White)
670 Dark Maroon/White/(White)		





436632

L/S SHOOT AROUND II

\$50.00\*

SIZES: XS, S, M, L, XL, 2XL

OFFER DATE: 09/01/11

\*15% upcharge for 3XL, MT, LT, XLT, 2XLT, 3XLT

END DATE: 09/01/14

Dri-FIT long-sleeve shooting shirt. Contrast color blocking on shoulders and rib knit fabrication on bottom of sleeve hems and neck band. Embroidered Swoosh design trademark at upper right chest. Body width: 24.5", Body length: 30.75" (size large). Tall body length: +2.375", Tall sleeve length: +2.375" (all sizes).

FABRIC: Body: 100% polyester.

100 White/White/(Black)	104 White/Cardinal/(Cardinal)	106 White/Black/(Black)
107 White/Navy/(Navy)	108 White/Royal/(Royal)	109 White/Scarlet/(Scarlet)
110 White/Purple/(Purple)	111 White/Dark Green/(Dark Green)	115 White/Dark Maroon/(Dark Maroon)

DRI-FIT



436633

TEAR AWAY PANT II

\$65.00\*

SIZES: XS, S, M, L, XL, 2XL

OFFER DATE: 09/01/11

\*15% upcharge for 3XL, MT, LT, XLT, 2XLT, 3XLT

END DATE: 09/01/14

Dri-FIT knit snap tear away pant. Contrast set on taping down side panels and around bottom hem. Covered elastic waistband with draw cord for adjustability. Open bottom hem. Embroidered Swoosh design trademark at left leg. Hip width: 23.25", Inseam length: 31.75" (size large). Tall inseam length: +2.375" (all sizes).

FABRIC: 100% polyester.

012 Black/White/(White)	100 White/White/(Black)	342 Dark Green/White/(White)
420 Navy/White/(White)	494 Royal/White/(White)	546 Purple/White/(White)
612 Cardinal/White/(White)	658 Scarlet/White/(White)	670 Dark Maroon/White/(White)

DRI-FIT



392905

OKLAHOMA GAME JERSEY

\$45.00\*

SIZES: S, M, L, XL, 2XL

OFFER DATE: 09/01/10

\*15% upcharge for 3XL

END DATE: 01/01/13

System of dress uniform. V-neck tailored fit including double knit fabric for a lightweight and breathable jersey. Flat back mesh contrast side panels. Nike Team Sports jock tag at lower left hem. Body width: 20.75", Body length: 31.25" (size large).

Part of Stock Embellishment Program.

FABRIC: Body: 100% polyester.

012 Black/White	104 White/Cardinal	106 White/Black
107 White/Navy	108 White/Royal	109 White/Scarlet
110 White/Purple	111 White/Dark Green	115 White/Dark Maroon
342 Dark Green/White	420 Navy/White	494 Royal/White
546 Purple/White	612 Cardinal/White	658 Scarlet/White
670 Dark Maroon/White		

Youth #392907 / S-XL / \$40.00 / Body width: 16.75", Body length: 25" (size medium)

DRI-FIT  



392906

OKLAHOMA GAME SHORT

\$45.00\*

SIZES: S, M, L, XL, 2XL

OFFER DATE: 09/01/10

\*15% upcharge for 3XL

END DATE: 01/01/13

System of dress uniform short. Combination of double knit fabric and flat back mesh make this a lightweight and breathable short. 2" gripper elastic waistband with drawcord for adjustability. Contrast side panels. Embroidered Swoosh design trademark at upper left hip. Hip width: 30" (size large), Inseam length: 11" (all sizes).

FABRIC: Body: 100% polyester.

012 Black/White	104 White/Cardinal	106 White/Black
107 White/Navy	108 White/Royal	109 White/Scarlet
110 White/Purple	111 White/Dark Green	115 White/Dark Maroon
342 Dark Green/White	420 Navy/White	494 Royal/White
546 Purple/White	612 Cardinal/White	658 Scarlet/White
670 Dark Maroon/White		

Youth #392908 / S-XL / \$40.00 / Hip width: 21.5", Inseam length: 9.25" (size medium)

DRI-FIT  





392909

BB10 S/S SHOOTING SHIRT

\$45.00\*

SIZES: XS, S, M, L, XL, 2XL

OFFER DATE: 09/01/10

\*15% upcharge for 3XL

END DATE: 09/01/13

Single pique quarter zip short-sleeve shooting shirt. Set on taping across center chest. Embroidered Swoosh design trademark at upper right chest. Nike Team Sports jock tag at lower left hem. Body width: 24.25", Body length: 31" (size large).

FABRIC: 100% polyester.

012 Black/White/(White)	342 Dark Green/White/(White)	420 Navy/White/(White)
494 Royal/White/(White)	546 Purple/White/(White)	612 Cardinal/White/(White)
658 Scarlet/White/(White)		

DRI-FIT



526615 TEAM ID III GAME JERSEY

\$45.00\*



SIZES: XS, S, M, L, XL, 2XL

OFFER DATE: 09/01/12

\*15% upcharge for 3XL, LT, XLT, 2XLT, 3XLT

END DATE: 09/01/15

Lightweight, fully sublimated, performance game jersey. Contrast color design details across shoulder panels and on neck band. Nike Team Sports jock tag at lower left hem. Body width: 24", Body length: 29.5" (size large). Tall body length: +2.375" (all sizes). **Custom Logo and Workmark Available.**

FABRIC: 100% polyester.

Youth #531471 / S-XL / \$40.00 / Body width: 17.5", Body length: 25" (size medium)

NEW Y C



526614 TEAM ID III GAME SHORT

\$45.00\*



SIZES: XS, S, M, L, XL, 2XL

OFFER DATE: 09/01/12

\*15% upcharge for 3XL, LT, XLT, 2XLT, 3XLT

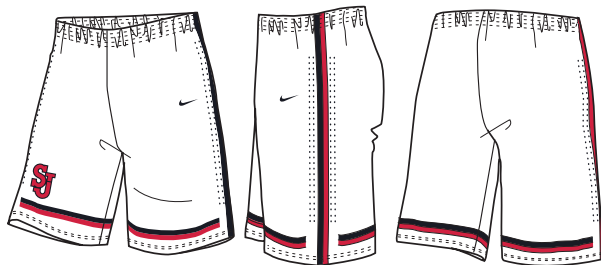
END DATE: 09/01/15

Lightweight, fully sublimated, performance game short. Contrast color design details down both sides and at hem. Elastic waistband and drawcord. Swoosh design trademark at front left hip. Hip width: 25.5", Inseam length: 9" (size large). Tall inseam length: +1.25" (all sizes). **Custom Logo Available.**

FABRIC: 100% polyester.

Youth #531472 / S-XL / \$40.00 / Hip width: 20.25", Inseam length: 8" (size medium)

NEW Y C





TEAM ID PLUS GAME JERSEY

See below\*



SIZES: XS, S, M, L, XL, 2XL  
\*15% upcharge for 3XL, LT, XLT, 2XLT, 3XLT

OFFER DATE: 09/01/11  
END DATE: 09/01/14

System of dress elite game jersey. Combination of piqué and flat back mesh fabrication create a lightweight and breathable jersey. Fully sublimated v-neck design, tailored fit, engineered mesh side panel with ability for team color customization. Nike Team Sports jock tag at lower left hem. Body width: 20.75", Body length: 31.25" (size large). Tall body length: +2.375" (all sizes). **Custom Logo and Workmark Available.**

FABRIC: 100% polyester.

436636 XX3 Design \$60.00\*



TEAM ID PLUS GAME SHORT

See below\*



SIZES: XS, S, M, L, XL, 2XL  
\*15% upcharge for 3XL, LT, XLT, 2XLT, 3XLT

OFFER DATE: 09/01/11  
END DATE: 09/01/14

System of dress elite game short. Combination of piqué and flat back mesh make this short breathable and lightweight. Fully sublimated engineered mesh shorts which allow the ability to customize with team colors. 2" gripper elastic waistband with drawcord for adjustability. Embroidered Jumpman logo design trademark at left thigh. Hip width: 29.75", Inseam length: 11.25" (size large). Tall inseam length: +1" (all sizes). **Custom Logo Available.**

FABRIC: 100% polyester.

436637 XX3 Design \$60.00\*



TEAM ID GAME JERSEY

See below\*



SIZES: XS, S, M, L, XL, 2XL  
\*15% upcharge for 3XL, LT, XLT, 2XLT, 3XLT

OFFER DATE: 09/01/09  
END DATE: 09/01/13

Lightweight, fully sublimated performance jersey, uniquely printed Nike team design. Flat-seam construction. Striped V-neck and arm rib. Set-in side-panel. Nike Team Sports jock tag lower left hem. Body width: 24", Body length: 29.5" (size large). Tall body length: +2.375" (all sizes). NFHS approved. **Custom Logo and Wordmark Available.**

FABRIC: 100% polyester.

356867	Baton Rouge Design	\$45.00*
356867	Zag Design	\$45.00*
214453	Motion Design	\$45.00*



TEAM ID GAME SHORT

See below\*



SIZES: XS, S, M, L, XL, 2XL  
\*15% upcharge for 3XL, LT, XLT, 2XLT, 3XLT

OFFER DATE: 09/01/06  
END DATE: 09/01/13

Lightweight, fully sublimated single-panel short. Drawcord waistband. No side seam. Contrast Swoosh design trademark on lower left hip. Hip width: 25.5", Inseam: 9" inseam (size large). Tall inseam length: 11" (size LT). NFHS approved. **Custom Logo Available.**

FABRIC: 100% polyester.

214454	Baton Rouge Design	\$45.00*
214454	Zag Design	\$45.00*
214454	Motion Design	\$45.00*



Baton Rouge Design



Zag Design



Motion Design





509149 | PINNACLE MESH 3.0 JERSEY

\$65.00\*



SIZES: XS, S, M, L, XL, 2XL

OFFER DATE: 09/01/12

\*15% upcharge for 3XL, 4XL, LT, XLT, 2XLT, 3XLT, 4XLT

END DATE: 09/01/15

Pinnacle mesh provides the latest in single layer technology for optimal practice performance. Dri-FIT fabric reversible single-layer mesh jersey. Two fully sublimated design graphic options on the front accomodating a full team name or single letter graphic. Back features tonal net graphic pattern and number. Swoosh design trademark at center front. Nike Team Sports jock tag at lower left hem. Body width: 24", Body length: 29.5" (size large). Tall body length: +2.375" (all sizes).

**Custom Logo and Wordmark Available.**

FABRIC: 100% polyester.



509148 | PINNACLE MESH 3.0 SHORT

\$50.00\*



SIZES: XS, S, M, L, XL, 2XL

OFFER DATE: 09/01/12

\*15% upcharge for 3XL, 4XL, LT, XLT, 2XLT, 3XLT, 4XLT

END DATE: 09/01/15

Fully sublimated Dri-FIT fabric pinnacle mesh short featuring contrast color down the side panels and at hem, tonal net design graphic on both side panels, and Swoosh design trademark at lower left side panel. Hip width: 25", Inseam length: 9" (size large). Tall inseam length: +1.25" (all sizes).

**Custom Logo Available.**

FABRIC: 100% polyester.



399629 RECRUIT MESH JERSEY

\$70.00



SIZES: XS, S, M, L, XL, 2XL

OFFER DATE: 12/01/10

\*15% upcharge for 3XL, 4XL, LT, XLT, 2XLT, 3XLT, 4XLT

END DATE: 12/01/13

Fully sublimated double knit mesh reversible jersey. V-neck design. Ability for team color customization. Nike Team Sports jock tag at lower left hem. Optional sublimated Swoosh design trademark at upper right chest. Body width: 24", Body length: 31.25" (size large), Tall Body length: +2.375". **Custom Logo and Wordmark Available.**

FABRIC: 100% polyester.

Youth #425344 / S-XL / \$65.00 / Body width: 17.5", Body length: 25" (size medium)

DRI-FIT



399628 RECRUIT MESH SHORT

\$70.00



SIZES: XS, S, M, L, XL, 2XL

OFFER DATE: 12/01/10

\*15% upcharge for 3XL, 4XL, LT, XLT, 2XLT, 3XLT, 4XLT

END DATE: 12/01/13

Fully sublimated reversible double knit mesh short. Elastic waistband with drawcord for adjustability and comfort. Sublimated Swoosh design trademark at upper left hip. Hip width: 25" (size large), Inseam length: 11" (all sizes), Tall Inseam length: +1.25". **Custom Logo Available.**

FABRIC: 100% polyester.

Youth #425345 / S-XL / \$65.00 / Hip width: 20", Inseam length: 9.25" (size medium)

DRI-FIT





# BASKETBALL - TEAM ID UNIFORM OPTIONS



## COLOR OPTIONS



## LETTER FONT OPTIONS: Height will vary based on team name.

### FULL BLOCK - 1 or 2 color

ABCDEFGHIJKLMNOPQRSTUVWXYZ

### ATHLETIC SHADOW - 1 or 2 color

ABCDEFGHIJKLMNOPQRSTUVWXYZ

### BUREAU - 1 or 2 color

ABCDEFGHIJKLMNOPQRSTUVWXYZ

### COUGARS - 1 or 2 color (Cannot be Arched or Vertically Arched)

ABCDEFGHIJKLMNOPQRSTUVWXYZ

### DADE BOLD - 1 or 2 color

ABCDEFGHIJKLMNOPQRSTUVWXYZ

### FB RUSH - 1 or 2 color

ABCDEFGHIJKLMNOPQRSTUVWXYZ

### GLADES BOLD - 1 or 2 color

ABCDEFGHIJKLMNOPQRSTUVWXYZ

### ITHACA - 1 or 2 color

ABCDEFGHIJKLMNOPQRSTUVWXYZ

## NUMBER FONT OPTIONS: 5" front, 8" back.

### FULL BLOCK - 1 or 2 color

1234567890

### ATHLETIC SHADOW - 2 color

1234567890

### BUREAU - 1 or 2 color

1234567890

### COUGARS - 1 or 2 color

0123456789

### DADE BOLD - 1 or 2 color

1234567890

### FB RUSH - 1 or 2 color

1234567890

### GLADES BOLD - 1 or 2 color

1234567890

### ITHACA - 1 or 2 color

1234567890

### KANSAS BLOCK - 1 or 2 color

1234567890

### MICHIGAN STATE - 1 or 2 color

1234567890

### TUCSON BOLD - 1 or 2 color

1234567890

### BOULDER BOLD - 3 color

1234567890

### KANSAS BLOCK - 1 or 2 color

ABCDEFGHIJKLMNOPQRSTUVWXYZ

### MICHIGAN STATE - 1 or 2 color

ABCDEFGHIJKLMNOPQRSTUVWXYZ

### TUCSON BOLD - 1 or 2 color

ABCDEFGHIJKLMNOPQRSTUVWXYZ

### BOULDER BOLD - 3 color

ABCDEFGHIJKLMNOPQRSTUVWXYZ

### CAXTON ROMAN BLOCK - 1 or 2 color

ABCDEFGHIJKLMNOPQRSTUVWXYZ

### BRUSH SCRIPT - 1 or 2 color

ABCDEFGHIJKLMNOPQRSTUVWXYZ

### BRUSH SCRIPT LOWER CASE - 1 or 2 color

abcdefghijklmnopqrstuvwxyz

### CAXTON ROMAN - 1 or 2 color

1234567890

### BLACKSBURG - 1, 2 or 3 color

1234567890

### GRID IRON BLOCK - 3 color

1234567890

### MORGANTOWN BOLD ITALIC - 1 or 2 color

1234567890

## TEAM NAME OPTIONS - 1 or 2 line options, using any combination of name and number fonts.

KENTUCKY

10

Straight - 1 line  
1 or 2 Color

KENTUCKY

10

Vertical Arch - 1 line  
1 or 2 Color

KENTUCKY

10

Arched - 1 line  
1 or 2 Color

KENTUCKY

10

WILDCATS

Straight - 2 line  
1 or 2 Color

KENTUCKY

10

WILDCATS

Vertical Arch - 2 line  
1 or 2 Color

KENTUCKY

10

WILDCATS

Arched - 2 line  
1 or 2 Color

Custom Logo Available. Custom art handling fee \$60.00.

Post embellishment is not recommended with digitally printed styles.

HYPER ELITE 3.0 JERSEY

See below\*



SIZES: S, M, L, XL, 2XL  
\*15% upcharge for 3XL, LT, XLT, 2XLT, 3XLT

OFFER DATE: 09/01/12  
END DATE: 09/01/15

The pinnacle jersey in the Nike team basketball line, inspired by Olympic designs. Fully sublimated lightweight flatback mesh fabrication and aerographic engineered mesh back panel keep this jersey light and breathable during competition. Contrast color side panels and back shoulder panel. Available with fully sublimated or twill embellishment options. Nike Team Sports jock tag at lower left hem. Body width: 20.75", Body length: 31.25" (size large). Tall body length: +2.375" (all sizes). NFHS approved. **Custom Logo and Wordmark Available.**

FABRIC: 100% polyester.

509146	Sublimated Jersey with Sublimated Name and Number	\$70.00*
532630	Sublimated Jersey with One-Color Lightweight Stretch Twill	\$126.00*
532629	Sublimated Jersey with Sublimated Lightweight Stretch Twill	\$130.00*

NEW DRI-FIT MOD



HYPER ELITE 3.0 SHORT

See below\*



SIZES: S, M, L, XL, 2XL  
\*15% upcharge for 3XL, LT, XLT, 2XLT, 3XLT

OFFER DATE: 09/01/12  
END DATE: 09/01/15

The pinnacle short in the Nike team basketball line, inspired by Olympic designs. Fully sublimated lightweight woven fabrication and laser perforations keep this short light and breathable during competition. Contrast color side panels and option for contrast front to back look. Swoosh design trademark at upper left hip. Hip width: 25", Inseam length: 11.25" (size large). Tall inseam length: +1.25" (all sizes). NFHS approved. **Custom Logo Available.**

FABRIC: 100% polyester.

509147	Blank	\$75.00*
--------	-------	----------

NEW DRI-FIT MOD





VICTORY SHOOTING SHIRT

See below\*



**SIZES:** XS, S, M, L, XL, 2XL  
**OFFER DATE:** 09/01/12  
**END DATE:** 09/01/15

\*15% upcharge for 3XL, 4XL, LT, XLT, 2XLT, 3XLT, 4XLT  
Dri-FIT knit shooting shirt inspired by olympic designs. Featuring contrast side panels and quarter-zip silhouette. Swoosh design trademark at upper right chest. Nike Team Sports jock tag at lower left hem. Body width: 24.5", Body length: 31" (size large). Tall body length: +2.375" (all sizes). Tall sleeve length: +1.25" (all sizes). **Custom Logo and Wordmark Available.**

**FABRIC:** 100% polyester.

509156	Blank	\$70.00*
409643	One-Color Twill (2" letters, 1-3 letters)	\$72.00*
409644	Two-Color Twill (2" letters, 1-3 letters)	\$73.00*
518148	Two-Color Sublimated Lightweight Stretch Twill	\$74.00*
418812	1" Embroidery	\$80.00*

NEW DRI-FIT MOD C



FADEAWAY GAME JERSEY

See below\*

SIZES: XS, S, M, L, XL, 2XL

OFFER DATE: 09/01/12

\*15% upcharge for 3XL, 4XL, LT, XLT, 2XLT, 3XLT, 4XLT

END DATE: 09/01/15

Dri-FIT knit game jersey featuring contrast color detailing at shoulder and contrast color neckband. Aerographic engineered mesh back panel keeps this jersey lightweight and breathable during competition. Nike Team Sports jock tag at lower left hem. Body width: 20.75", Body length: 31.25" (size large). Tall body length: +2.375" (all sizes). **Custom Logo Available.**

FABRIC: 100% polyester.

509151	Blank	\$60.00*
359555	One-Color Screen Print	\$76.00*
359556	Two-Color Screen Print	\$86.00*
330089	One-Color Twill	\$86.00*
330090	Two-Color Twill	\$96.00*
409640	Three-Color Twill	\$106.00*
409637	One-Color Lightweight Stretch Twill	\$96.00*
409638	Two-Color Lightweight Stretch Twill	\$104.00*
409639	Three-Color Lightweight Stretch Twill	\$116.00*
456533	Sublimated Standard Twill Hoops/Lax	\$90.00*
456047	Sublimated Lightweight Standard Twill Hoops/Lax	\$100.00*

NEW DRI-FIT MOD



FADEAWAY GAME SHORT

See below\*

SIZES: S, M, L, XL, 2XL

OFFER DATE: 09/01/12

\*15% upcharge for 3XL, 4XL, LT, XLT, 2XLT, 3XLT, 4XLT

END DATE: 09/01/15

Dri-FIT knit game short featuring contrast color design details at side panels and hem. Team name option on left side panel and contrast color belt buckle option. Swoosh design trademark at upper left hip. Hip width: 29.75", Inseam length: 11.25" (size large). Tall inseam length: +1.25" (all sizes). **Custom Logo Available.**

FABRIC: 100% polyester.

509150	Blank	\$60.00*
531989	One-Color 2" Short Lightweight Twill	\$80.00*
531990	One-Color 2" Short Standard Twill	\$75.00*
531991	Sublimated Standard Twill	\$70.00*
531992	Sublimated Lightweight Standard Twill	\$75.00*
531993	One-Color 2" Short Screenprint	\$70.00*
531994	Two-Color 2" Short Screenprint	\$75.00*

NEW DRI-FIT MOD





436638 HYPER ELITE 2.0 JERSEY

\$65.00



SIZES: S, M, L, XL, 2XL  
\*15% upcharge for 3XL, LT, XLT, 2XLT, 3XLT

OFFER DATE: 09/01/11  
END DATE: 09/01/14

Be at your best on court with this system of dress elite fit game jersey. Fully sublimated lightweight flatback mesh material help make this uniform lightweight. A unique aerographic engineered mesh on the back panel of this style provide breathability for the athlete during competition. V-neck design. Contrast neck band and contrast striping on top of the shoulders. Nike Team Sports jock tag at lower left hem. Body width: 20.75", Body length: 31.25" (size large). Tall body length: +2.375" (all sizes). NFHS approved. **Custom Logo Available.**

FABRIC: 100% polyester.



436639 HYPER ELITE 2.0 SHORT

\$75.00



SIZES: S, M, L, XL, 2XL  
\*15% upcharge for 3XL, LT, XLT, 2XLT, 3XLT

OFFER DATE: 09/01/11  
END DATE: 09/01/14

System of dress elite game short. Fully sublimated, lightweight woven fabrication with laser perforated side panels elevate this short for ultimate breathability and performance. 2" gripper elastic draw cord waistband for adjustability. Ability to contrast team colors on side panels and option for one letter team customization on lower right side panel. Embroidered Swoosh design trademark at upper left thigh. Hip width: 25", Inseam length: 11.25" (size large). Tall inseam length: +1" (all sizes). **Custom Logo Available.**

FABRIC: 100% polyester.



HYPER ELITE GAME JERSEY

See below\*

SIZES: S, M, L, XL, 2XL  
\*15% upcharge for 3XL, LT, XLT, 2XLT, 3XLT

OFFER DATE: 09/01/10  
END DATE: 09/01/13

"System of Dress" uniform with v-neck design and a tailored fit. A combination of Dri-FIT piqué body fabric on the front of the jersey and an aerographic engineered mesh fabric on the back of the jersey make this an elevated breathable and lightweight game uniform. Contrast color neck band. Nike Team Sports jock tag at lower left hem. Body width: 20.75", Body length: 31.25" (size large). Tall body length: +2.375" (all sizes). NFHS approved. **Custom Logo Available.**

FABRIC: 100% polyester.

392912	Blank	\$60.00*
330089	One-Color Twill	\$86.00*
330090	Two-Color Twill	\$96.00*
409640	Three-Color Twill	\$106.00*
409637	One-Color Lightweight Stretch Twill	\$96.00*
409638	Two-Color Lightweight Stretch Twill	\$104.00*
409639	Three-Color Lightweight Stretch Twill	\$116.00*
456533	Sublimated Standard Twill Hoops/Lax	\$90.00*
456047	Sublimated Lightweight Standard Twill Hoops/Lax	\$100.00*

DRI-FIT MOD



HYPER ELITE GAME SHORT

See below\*

SIZES: S, M, L, XL, 2XL  
\*15% upcharge for 3XL, LT, XLT, 2XLT, 3XLT

OFFER DATE: 09/01/10  
END DATE: 09/01/13

An authenticated Nike hyper elite short that is 70% lighter than a traditional game short is sure to keep any player cool while in the heat of competition. 2" gripper elastic waistband with drawcord for adjustability. Side panels with perms add breathability and highlight Nike pro combat apparel underneath. Ability to color customize side ovals on panels for a unique on court look. Ability for one letter embellishment on lower left leg. Embroidered Swoosh design trademark at upper left thigh. Hip width: 30", Inseam length: 11" (size large). Tall inseam length: +1.25" (size large). **Custom Logo Available.**

FABRIC: 100% polyester.

392913	Blank	\$65.00*
379436	One-Letter One-Color Twill	\$70.00*
379374	One-Letter Two-Color Twill	\$72.00*
409641	One-Color One-Letter Lightweight Stretch Twill	\$71.00*
409642	Two-Color One-Letter Lightweight Stretch Twill	\$73.00*
456534	Short Sublimated 1 Letter Standard Twill	\$71.00*
456532	Sublimated Short 1 Letter Lightweight Stretch Twill	\$72.00*

DRI-FIT MOD





TEAM JORDAN JERSEY

See below\*

SIZES: XS, S, M, L, XL, 2XL  
\*15% upcharge for 3XL, LT, XLT, 2XLT, 3XLT

OFFER DATE: 09/01/09  
END DATE: 09/01/13

“System of Dress” uniform. V-neck tailored fit including flat-back mesh for a smooth and breathable feel. Dri-FIT piqué side panel with contrast piping on front and back design seams. Body width: 20.75”, Body length: 31” (size large). Tall body length: +2.375” (all sizes). NFHS approved. Custom Logo Available.

FABRIC: 100% polyester.

350787	Blank	\$70.00*
359555	One-Color Screen Print	\$86.00*
359556	Two-Color Screen Print	\$96.00*
330089	One-Color Twill	\$96.00*
330090	Two-Color Twill	\$106.00*
409640	Three-Color Twill	\$116.00*
409637	One-Color Lightweight Stretch Twill	\$106.00*
409638	Two-Color Lightweight Stretch Twill	\$114.00*
409639	Three-Color Lightweight Stretch Twill	\$126.00*
456533	Sublimated Standard Twill Hoops/Lax	\$100.00*
456047	Sublimated Lightweight Standard Twill Hoops/Lax	\$110.00*

DRI-FIT MOD



TEAM JORDAN SHORT

See below\*

SIZES: XS, S, M, L, XL, 2XL  
\*15% upcharge for 3XL, LT, XLT, 2XLT, 3XLT

OFFER DATE: 09/01/09  
END DATE: 09/01/13

“System of Dress” uniform. Flat-back mesh with exposed gripper elastic waistband and drawcord for easy adjustability. Dri-FIT piqué side panel with contrast piping on front and back design seams. Jumpman design trademark at upper right hip. 5” letter option at lower left panel. Hip width: 29.75”, Inseam length: 11” (size large). Tall inseam length: +1” (all sizes). NFHS approved. Custom Logo Available.

FABRIC: 100% polyester.

350788	Blank	\$65.00*
379375	One-Letter One-Color Screen Print	\$68.00*
379376	One-Letter Two-Color Screen Print	\$70.00*
379436	One-Letter One-Color Twill	\$70.00*
379374	One-Letter Two-Color Twill	\$72.00*
409641	One-Color One-Letter Lightweight Stretch Twill	\$71.00*
409642	Two-Color One-Letter Lightweight Stretch Twill	\$73.00*
456534	Short Sublimated 1 Letter Standard Twill	\$71.00*
456532	Sublimated Short 1 Letter Lightweight Stretch Twill	\$72.00*

DRI-FIT MOD



TEAM JORDAN SHOOTING SHIRT

See below\*



SIZES: XS, S, M, L, XL, 2XL  
\*15% upcharge for 3XL, 4XL, LT, XLT, 2XLT, 3XLT, 4XLT

OFFER DATE: 09/01/09  
END DATE: 09/01/13

Pinnacle mesh Dri-FIT shooting shirt with quarter-zip through collar. Contrast color at upper back panel and back side of lower sleeves. Jumpman design trademark at upper back collar and front left chest. Body width: 24.5", Body length: 30.75" (size large). Tall body length: +2.375" (all sizes).

Custom Logo and Wordmark Available.

FABRIC: 100% polyester.

350789	Blank	\$75.00*
330089	One-Color Twill	\$101.00*
330090	Two-Color Twill	\$111.00*
409637	One-Color Lightweight Stretch Twill	\$111.00*
409638	Two-Color Lightweight Stretch Twill	\$119.00*

DRI-FIT

MOD



GEORGETOWN GAME JERSEY

See below\*

SIZES: XS, S, M, L, XL, 2XL  
\*15% upcharge for 3XL, LT, XLT, 2XLT, 3XLT

OFFER DATE: 09/01/10  
END DATE: 09/01/13

"System of Dress" uniform. V-neck tailored fit including flat-back mesh for a smooth and breathable feel. Unique tonal kinta print design on neck and arm cuff. Nike Team Sports jock tag on lower left hem. Body width: 20.75", Body length: 31.25" (size large). Tall body length: +2.375" (all sizes). NFHS approved. **Custom Logo Available.**

FABRIC: 100% polyester.

392920	Blank	\$75.00*
359555	One-Color Screen Print	\$91.00*
359556	Two-Color Screen Print	\$101.00*
330089	One-Color Twill	\$101.00*
330090	Two-Color Twill	\$111.00*
409640	Three-Color Twill	\$121.00*
409637	One-Color Lightweight Stretch Twill	\$111.00*
409638	Two-Color Lightweight Stretch Twill	\$119.00*
409639	Three-Color Lightweight Stretch Twill	\$131.00*
456533	Sublimated Standard Twill Hoops/Lax	\$105.00*
456047	Sublimated Lightweight Standard Twill Hoops/Lax	\$115.00*

DRI-FIT MOD NFHS C



GEORGETOWN GAME SHORT

See below\*

SIZES: XS, S, M, L, XL, 2XL  
\*15% upcharge for 3XL, LT, XLT, 2XLT, 3XLT

OFFER DATE: 09/01/10  
END DATE: 09/01/13

"System of Dress" uniform. Flat-back mesh with exposed gripper elastic waistband and draw-cord for easy adjustability. Unique tonal kinta design on center front waistband, taping and bottom hem. Jumpman design trademark at upper left hip. Optional 1" direct embroidery team name on lower left hem. Hip width: 29.75", Inseam length: 11" (size large). Tall inseam length: +1" (all sizes). NFHS approved. **Custom Logo Available.**

FABRIC: 100% polyester.

392921	Blank	\$70.00*
394875	1" Embroidery	\$80.00*

DRI-FIT MOD NFHS C





PENN STATE GAME JERSEY

See below\*



**SIZES:** S, M, L, XL, 2XL  
\*15% upcharge for 3XL, LT, XLT, 2XLT, 3XLT  
“System of Dress” v-neck Dri-FIT flat-back mesh jersey with contrast neck line and contrast piqué side panel insets and piping. Nike Team Sports jock tag at lower left hem. Body width: 20.75", Body length: 31.25" (size large). Tall body length: +2.375" (all sizes). NFHS approved. **Custom Logo Available.**  
**FABRIC:** Body: 100% polyester.

392910	Blank	\$55.00*
359555	One-Color Screen Print	\$71.00*
359556	Two-Color Screen Print	\$81.00*
330089	One-Color Twill	\$81.00*
330090	Two-Color Twill	\$91.00*
409640	Three-Color Twill	\$101.00*
409637	One-Color Lightweight Stretch Twill	\$91.00*
409638	Two-Color Lightweight Stretch Twill	\$99.00*
409639	Three-Color Lightweight Stretch Twill	\$111.00*
456533	Sublimated Standard Twill Hoops/Lax	\$85.00*
456047	Sublimated Lightweight Standard Twill Hoops/Lax	\$95.00*

DRI-FIT MOD



PENN STATE GAME SHORT

See below\*



**SIZES:** S, M, L, XL, 2XL  
\*15% upcharge for 3XL, LT, XLT, 2XLT, 3XLT  
“System of Dress” Dri-FIT mesh short with 2" gripper elastic waistband with drawcord. Piqué side panel insets and piping. Embroidered Swoosh design trademark at upper left hip. Hip width: 30" (size large), Inseam length: 11" (all sizes). Tall inseam length: +1.25" (all sizes). NFHS approved. **Custom Logo Available.**  
**FABRIC:** 100% polyester.

392911	Blank	\$55.00*
409645	1" Screen Print	\$65.00*
394875	1" Embroidery	\$65.00*

DRI-FIT MOD



BB10 L/S SHOOTING SHIRT

See below\*



SIZES: S, M, L, XL, 2XL  
\*15% upcharge for 3XL, LT, XLT, 2XLT, 3XLT

OFFER DATE: 09/01/10  
END DATE: 09/01/13

Single piqué quarter zip long-sleeve shooting shirt. Set on taping across center chest. Sideseam vents for easy mobility. Embroidered Swoosh design trademark at upper right chest. Nike Team Sports jock tag at lower left hem. Body width: 24.25", Body length: 31" (size large). Tall body length: +2.375" (all sizes). Tall sleeve length: +2.375" (all sizes). **Custom Logo and Wordmark Available.**

FABRIC: 100% polyester.

392914	Blank	\$65.00*
409643	One-Color Twill (2" letters, 1-3 letters)	\$67.00*
409644	Two-Color Twill (2" letters, 1-3 letters)	\$68.00*
394875	1" Embroidery (shown)	\$75.00*

DRI-FIT MOD C



# BASKETBALL - MODIFIED UNIFORM OPTIONS



## COLOR OPTIONS



## LETTER FONT OPTIONS: Height will vary based on team name.

FULL BLOCK - 1 or 2 color screen print, tackle twill or sublimated twill

ABCDEFGHIJKLMNOPQRSTUVWXYZ

ATHLETIC SHADOW - 1 or 2 color screen print, tackle twill or sublimated twill

ABCDEFGHIJKLMNOPQRSTUVWXYZ

BUREAU - 1 or 2 color screen print, tackle twill or sublimated twill

ABCDEFGHIJKLMNOPQRSTUVWXYZ

COUGARS - 1 or 2 color screen print, tackle twill or sublimated twill (Select Styles Only) (Cannot be Arched or Vertically Arched)

ABCDEFGHIJKLMNOPQRSTUVWXYZ

DADE BOLD - 1 or 2 color screen print, tackle twill or sublimated twill

ABCDEFGHIJKLMNOPQRSTUVWXYZ

FB RUSH - 1 or 2 color screen print, tackle twill or sublimated twill

ABCDEFGHIJKLMNOPQRSTUVWXYZ

GLADES BOLD - 1 or 2 color screen print, tackle twill or sublimated twill

ABCDEFGHIJKLMNOPQRSTUVWXYZ

ITHACA - 1 or 2 color screen print, tackle twill or sublimated twill

ABCDEFGHIJKLMNOPQRSTUVWXYZ

## NUMBER FONT OPTIONS: 5" front, 8" back.

FULL BLOCK - 1 or 2 color screen print or tackle twill

1234567890

ATHLETIC SHADOW - 2 color screen print or tackle twill

1234567890

BUREAU - 1 or 2 color screen print or tackle twill

1234567890

COUGARS - 1 or 2 color screen print or tackle twill

0123456789

DADE BOLD - 1 or 2 color screen print or tackle twill

1234567890

FB RUSH - 1 or 2 color screen print or tackle twill

1234567890

GLADES BOLD - 1 or 2 color screen print or tackle twill

1234567890

ITHACA - 1 or 2 color screen print or tackle twill

1234567890

KANSAS BLOCK - 1 or 2 color screen print or tackle twill

1234567890

MICHIGAN STATE - 1 or 2 color screen print or tackle twill

1234567890

TUCSON BOLD - 1 or 2 color screen print or tackle twill

1234567890

BOULDER BOLD - 3 color tackle twill

1234567890

KANSAS BLOCK - 1 or 2 color screen print, tackle twill or sublimated twill

ABCDEFGHIJKLMNOPQRSTUVWXYZ

MICHIGAN STATE - 1 or 2 color screen print, tackle twill or sublimated twill

ABCDEFGHIJKLMNOPQRSTUVWXYZ

TUCSON BOLD - 1 or 2 color screen print, tackle twill or sublimated twill

ABCDEFGHIJKLMNOPQRSTUVWXYZ

BOULDER BOLD - 3 color screen print, tackle twill or sublimated twill

ABCDEFGHIJKLMNOPQRSTUVWXYZ

CAXTON ROMAN BLOCK - 1 or 2 color screen print, tackle twill or sublimated twill

ABCDEFGHIJKLMNOPQRSTUVWXYZ

BRUSH SCRIPT - 1 or 2 color screen print, tackle twill or sublimated twill

ABCDEFGHIJKLMNOPQRSTUVWXYZ

BRUSH SCRIPT LOWER CASE - 1 or 2 color screen print, tackle twill or sublimated twill

abcdefghijklmnopqrstuvwxyz

CAXTON ROMAN - 1 or 2 color screen print or tackle twill

1234567890

BLACKSBURG - 1, 2 or 3 color screen print or tackle twill

1234567890

GRID IRON BLOCK - 3 color tackle twill

1234567890

MORGANTOWN BOLD ITALIC - 1 or 2 color screen print or tackle twill

1234567890

TEAM NAME OPTIONS - 1 or 2 line options, using any combination of name and number fonts.



Custom Logo Available. Custom art handling fee \$60.00.

Post embellishment is not recommended with digitally printed styles.



509152 DQT DIAMOND PRESS JERSEY

\$85.00\*



SIZES: XS, S, M, L, XL, 2XL  
\*15% upcharge for 3XL, 4XL, LT, XLT, 2XLT, 3XLT, 4XLT

OFFER DATE: AVAILABLE 365 DAYS/YEAR

Digitally printed and fully sublimated game jersey featuring contrast color designs down both side panels and on neck band. Aerographic mesh back panel helps keep this jersey lightweight and breathable during competition. Nike Team Sports jock tag at lower left hem. Body width: 20.75", Body length: 31.25" (size large). Tall body length: +2.375" (all sizes). NFHS approved. **Exclusive order form required. Custom Logo and Wordmark Available.**

FABRIC: 100% polyester.



509153 DQT DIAMOND PRESS SHORT

\$75.00\*



SIZES: XS, S, M, L, XL, 2XL  
\*15% upcharge for 3XL, 4XL, LT, XLT, 2XLT, 3XLT, 4XLT

OFFER DATE: AVAILABLE 365 DAYS/YEAR

Digitally printed and fully sublimated game short featuring contrast color designs and team embellishment options down both sides. Elastic waistband and drawcord. Swoosh design trademark at upper left hip. +2" and +4" additional length option for size S-4XL. Hip width: 30", Inseam length: 11" (size large). Tall inseam length: +1.25" (size LT). NFHS approved. **Exclusive order form required. Custom Logo Available.**

FABRIC: 100% polyester.



350823 DQT GATOR GAME JERSEY

\$80.00\*



**SIZES:** XS, S, M, L, XL, 2XL **OFFER DATE:** AVAILABLE 365 DAYS/YEAR  
\*15% upcharge for 3XL, 4XL, LT, XLT, 2XLT, 3XLT, 4XLT

Fully sublimated lightweight performance V-neck game jersey. Contrast team color name across center front chest and straight printed side panel. Nike Team Sports jock tag at lower left hem. Body width: 20.75", Body length: 31.25" (size large), Tall Body length: +2.375". NFHS approved. **Exclusive order form required. Custom Logo and Wordmark Available.**

**FABRIC:** 100% polyester.



350824 DQT GATOR GAME SHORT

\$72.00\*



**SIZES:** XS, S, M, L, XL, 2XL **OFFER DATE:** AVAILABLE 365 DAYS/YEAR  
\*15% upcharge for 3XL, 4XL, LT, XLT, 2XLT, 3XLT, 4XLT

Fully sublimated lightweight performance game short. Drawcord waistband and contrast team color side panel inset with no side-seam. Swoosh design trademark at lower left hip. +2" and +4" additional length option for size S-4XL. Hip width: 30" (size large), Inseam length: 11" (all sizes), Tall Inseam length: +1.25" (all sizes). NFHS approved. **Exclusive order form required. Custom Logo Available.**

**FABRIC:** 100% polyester.



# DIGITAL QUICK-TURN UNIFORM OPTIONS



## PRIMARY AND SECONDARY COLOR OPTIONS



## FONT OPTIONS

FULL BLOCK - 1 or 2 color

ABCDEFGHIJKLMNOPQRSTUVWXYZ

ATHLETIC SHADOW - 1 or 2 color

ABCDEFGHIJKLMNOPQRSTUVWXYZ

BUREAU - 1 or 2 color

ABCDEFGHIJKLMNOPQRSTUVWXYZ

COUGARS - 1 or 2 color (Cannot be Arched or Vertically Arched)

ABCDEFGHIJKLMNOPQRSTUVWXYZ

DADE BOLD - 1 or 2 color

ABCDEFGHIJKLMNOPQRSTUVWXYZ

FB RUSH - 1 or 2 color

ABCDEFGHIJKLMNOPQRSTUVWXYZ

GLADES BOLD - 1 or 2 color

ABCDEFGHIJKLMNOPQRSTUVWXYZ

ITHACA - 1 or 2 color

ABCDEFGHIJKLMNOPQRSTUVWXYZ

KANSAS BLOCK - 1 or 2 color

ABCDEFGHIJKLMNOPQRSTUVWXYZ

MICHIGAN STATE - 1 or 2 color

ABCDEFGHIJKLMNOPQRSTUVWXYZ

TUCSON BOLD - 1 or 2 color

ABCDEFGHIJKLMNOPQRSTUVWXYZ

BOULDER BOLD - 3 color

ABCDEFGHIJKLMNOPQRSTUVWXYZ

CAXTON ROMAN BLOCK - 1 or 2 color

ABCDEFGHIJKLMNOPQRSTUVWXYZ

BRUSH SCRIPT - 1 or 2 color

ABCDEFGHIJKLMNOPQRSTUVWXYZ

BRUSH SCRIPT LOWER CASE - 1 or 2 color

abcdefghijklmnopqrstuvwxyz

FULL BLOCK - 1 or 2 color

1234567890

ATHLETIC SHADOW - 2 color

1234567890

BUREAU - 1 or 2 color

1234567890

COUGARS - 1 or 2 color

0123456789

DADE BOLD - 1 or 2 color

1234567890

FB RUSH - 1 or 2 color

1234567890

GLADES BOLD - 1 or 2 color

1234567890

ITHACA - 1 or 2 color

1234567890

KANSAS BLOCK - 1 or 2 color

1234567890

MICHIGAN STATE - 1 or 2 color

1234567890

TUCSON BOLD - 1 or 2 color

1234567890

BOULDER BOLD - 3 color

1234567890

CAXTON ROMAN - 1 or 2 color

1234567890

BLACKSBURG - 1, 2 or 3 color

1234567890

GRID IRON BLOCK - 3 color

1234567890

MORGANTOWN BOLD ITALIC - 1 or 2 color

1234567890

© Custom Logo Available.

See Uniform Builder at [Niketeam.com](http://Niketeam.com) or Team representative for order and delivery dates.



**436792 | HYPER ELITE JERSEY**

**SIZES:** S, M, L, XL, 2XL  
\*15% upcharge for 3XL

Fully sublimated flat back mesh fabric with an engineered mesh back panel for a lightweight and breathable elite game jersey. V-neck design with a contrast neck trim option. Ability for team color customization on side panels and arm trim. Nike Team Sports jock tag at lower left hem. Options: +2" and +4" additional length. Body width: 20.75", Body length: 31.25" (size large). NFHS approved.

**FABRIC:** 100% polyester.



**436791 | HYPER ELITE SHORT**

**SIZES:** S, M, L, XL, 2XL  
\*15% upcharge for 3XL

System of dress elite fit. Fully sublimated stretch woven game short. Perforated side panels allow for ultimate breathability. Gripper elastic waistband with drawcord for adjustability. Embroidered Swoosh design trademark at left thigh. Options: +2" and +4" additional length. Hip width: 30" (size large), Inseam length: 11" (all sizes). NFHS approved.

**FABRIC:** 100% polyester.



**436640 | L/S SHOOTING SHIRT**

**SIZES:** S, M, L, XL, 2XL  
\*15% upcharge for 3XL

Flat back mesh long-sleeve shooting shirt. Rib knit trim at sleeve hem and neck collar. Contrast sleeve stripes for team color customization. Hidden snaps on front placket. Embroidered Swoosh design trademark at upper right chest. Nike Team Sports jock tag at lower left hem. Options: +2" and +4" additional length. Body width: 25", Body length: 31.25" (size large).  
**FABRIC:** 100% polyester.

**CUSTOM**



**392917 NO LOOK GAME JERSEY**

**SIZES:** S, M, L, XL, 2XL  
\*15% upcharge for 3XL  
Flat-back mesh V-neck game jersey with a tailored fit. Contrasting flat-back mesh taping and dazzle flat piping. Nike Team Sports jock tag on lower left hem. Options: +2" and +4" additional length. Body width: 20.75", Body length: 31.25" (size large). NFHS approved.  
**FABRIC:** 100% polyester.



**392918 NO LOOK GAME SHORT**

**SIZES:** S, M, L, XL, 2XL  
\*15% upcharge for 3XL  
Four-needle 2" exposed gripper elastic waistband with a drawcord. Contrasting flat-back mesh and taping with dazzle flat piping trim - allowing for extra customization on this short. Embroidered Swoosh design trademark at upper left hip. Options: +2" and +4" additional length. Hip width: 30" (size large), Inseam length: 11" (all sizes). NFHS approved.  
**FABRIC:** 100% polyester.





350801 | SPARTACUS GAME JERSEY

**SIZES:** S, M, L, XL, 2XL  
\*25% upcharge for 3XL

1.25" self-material neck with clean finished armhole. Contrasting back shoulder and side insert with a .375" contrasting shimmersheen overlay that is sewn on back and front of side insert. Home plate option is not available on this style. Options: +2" and +4" additional length. Body width: 20.75", Body length: 31.25" (size large). NFHS approved.

**FABRIC:** White: 100% polyester. Colors: 100% nylon.

Flat-back mesh

CUSTOM

SPARTACUS GAME SHORT

**SIZES:** S, M, L, XL, 2XL  
\*25% upcharge for 3XL

Four-needle 2" exposed gripper elastic waistband with a drawcord. Contrasting top and bottom side insert with a .375" contrasting shimmersheen overlay on front and back of side inserts. Options: +2" and +4" additional length. Hip width: 30" (size large), Inseam length: 11" (all sizes). NFHS approved.

**FABRIC:** White: 100% polyester. Colors: 100% nylon.

350803 Flat-back mesh

350804 Two-ply flat-back mesh

CUSTOM



287758 CAVALIER GAME JERSEY

**SIZES:** S, M, L, XL, 2XL  
\*25% upcharge for 3XL  
0.5" self-fabric armhole trim and 1.25" self-fabric neck with facing. Same or contrasting back shoulder inserts. Shoulder insert. Options: +2" and +4" additional length. Homeplate option is not available on this style. NFHS approved.  
**FABRIC:** White: 100% polyester. Colors: 100% nylon.

Flat-back mesh



CAVALIER GAME SHORT

**SIZES:** S, M, L, XL, 2XL  
\*25% upcharge for 3XL  
Four-needle 2" exposed gripper elastic waistband with a drawcord. Contrasting front and back curved side insert. Options: +2" and +4" additional length. Inseam: 11.25" (all sizes). NFHS approved.  
**FABRIC:** White: 100% polyester. Colors: 100% nylon.

287757 Flat-back mesh

326929 Two-ply flat-back mesh



Additional Cavalier Short options.



COLORADO GAME JERSEY

**SIZES:** S, M, L, XL, 2XL  
\*25% upcharge for 3XL  
0.625" rib knit mitered V-neck trim and clean finished armholes. Contrasting pieced side inserts with a contrasting color center insert. Options: +2" and +4" additional length. Homeplate option is not available on this style. Neck trim patterns available: 11, 22, 23E, 33E. NFHS approved.  
**FABRIC:** White: 100% polyester. Colors: 100% nylon.

239325	Flat-back mesh
--------	----------------



COLORADO GAME SHORT

**SIZES:** S, M, L, XL, 2XL  
\*25% upcharge for 3XL  
Four-needle 2" exposed gripper elastic waistband with a drawcord. 8" inseam. Contrasting pieced side inserts with a contrasting color center insert. Options: +2" and +4" additional length. NFHS approved.  
**FABRIC:** White: 100% polyester. Colors: 100% nylon.

239329	Flat-back mesh
--------	----------------

288432	Two-ply flat-back mesh
--------	------------------------





OHIO STATE GAME JERSEY

**SIZES:** S, M, L, XL, 2XL  
\*25% upcharge for 3XL  
0.625" rib knit mitered V-neck and clean finished armholes. Tapered front shoulder inserts, tapered side inserts. Options: +2" and +4" additional length. Neck trim patterns available: 11, 22, 23E, 33E. Homeplate option is not available on this style. NFHS approved.  
**FABRIC:** White: 100% polyester. Colors: 100% nylon.

287126	Flat-back mesh
--------	----------------



OHIO STATE GAME SHORT

**SIZES:** S, M, L, XL, 2XL  
\*25% upcharge for 3XL  
Four-needle 2" exposed gripper elastic waistband with drawcord. 8" inseam. Three-pieced side/front inserts. Options: +2" and +4" additional length. NFHS approved.  
**FABRIC:** White: 100% polyester. Colors: 100% nylon.

208791	Flat-back mesh
288433	Two-ply flat-back mesh



350805 ELITE L/S SHOOTING SHIRT

**SIZES:** S, M, L, XL, 2XL  
\*15% upcharge for 3XL  
1" rib knit neck trim with a 2" rib knit sleeve end trim. Has contrasting shimmersheen piping sewn into seam on top front and top back. Options: +2" and +4" additional length. Body width: 25.5", Body length: 31.25" (size large).  
**FABRIC:** White: 100% polyester. Colors: 100% nylon.

Flat-back mesh

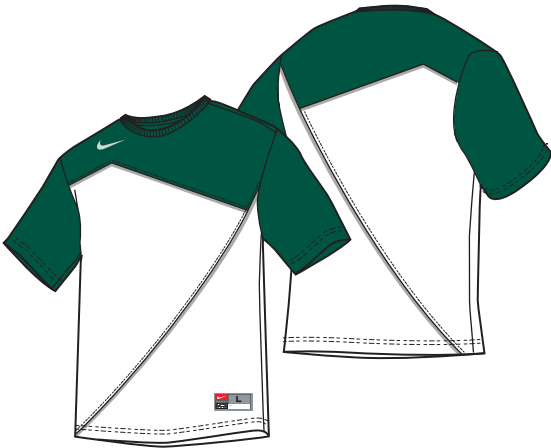
CUSTOM

350806 ELITE S/S SHOOTING SHIRT

**SIZES:** S, M, L, XL, 2XL  
\*15% upcharge for 3XL  
1" rib knit neck trim with hemmed sleeve end. Has contrasting shimmersheen piping sewn into seam on top front and top back. Options: +2" and +4" additional length. Body width: 25.5", Body length: 31.25" (size large).  
**FABRIC:** White: 100% polyester. Colors: 100% nylon.

Flat-back mesh

CUSTOM



## BASKETBALL - CUSTOM UNIFORM OPTIONS

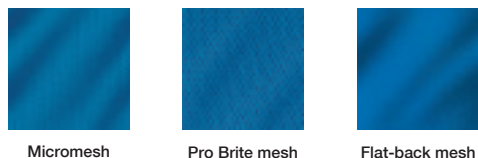


### COLOR OPTIONS



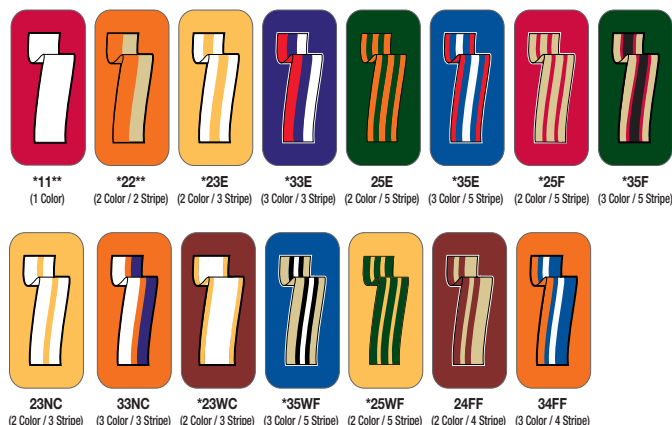
Indicates color of Swoosh patch on fabric color. No options available.

### FABRIC OPTIONS



### NECK/CUFF TRIM OPTIONS

\*5/8" trim available on 11, 22, 22NE, 23E and 33E patterns only.



### MEN'S CUSTOM UNIFORM SIZING (carryover styles only)

SIZE	JERSEY		SHORT		PANT INSEAM
Small	35	37	29	31	33
Medium	38	40	32	34	33
Large	41	43	35	37	35
XL	44	46	38	40	35
2XL	47	49	41	43	36
3XL	50	52	44	46	36

### FONT OPTIONS

PLAIN BLOCK - 1 or 2 color print or tackle twill

ABCDEFGHIJKLMNOPQRSTUVWXYZ

FULL BLOCK - 1 or 2 color print or tackle twill

ABCDEFGHIJKLMNOPQRSTUVWXYZ

FULL BLOCK OUTLINE - 1 or 2 color print only

ABCDEFGHIJKLMNOPQRSTUVWXYZ

GOTHIC BLOCK - 1 or 2 color print or tackle twill

ABCDEFGHIJKLMNOPQRSTUVWXYZ

ATHLETIC GOthic SHADOW - 1 or 2 color print or 2 color tackle twill

ABCDEFGHIJKLMNOPQRSTUVWXYZ

ATHLETIC SHADOW - 1 or 2 color print or 2 color tackle twill

ABCDEFGHIJKLMNOPQRSTUVWXYZ

KANSAS BLOCK - 1 or 2 color print or tackle twill

ABCDEFGHIJKLMNOPQRSTUVWXYZ

CAXTON ROMAN BLOCK - 1 or 2 color print or tackle twill

ABCDEFGHIJKLMNOPQRSTUVWXYZ

NIKE TRUE BLOCK - 1 or 2 color print or tackle twill

ABCDEFGHIJKLMNOPQRSTUVWXYZ

BOULDER BOLD - 3 color tackle twill

ABCDEFGHIJKLMNOPQRSTUVWXYZ

MIAMI (NOT SHOWN) - 1 or 2 color print or tackle twill

SCRIPT (NOT SHOWN) - 1 or 2 color print or tackle twill

ATHLETIC GOthic SHADOW - 2 color print or tackle twill (4\*/6\*/8")

1234567890

FULL BLOCK - 1 or 2 color print or tackle twill (8\*/10")

1234567890

ATHLETIC SHADOW - 2 color print or tackle twill (4\*/5\*/6\*/8\*/10")

1234567890

GOTHIC - 1 or 2 color print (4\*/6\*/8\*/10"/12"), tackle twill only (4\*/6\*/8\*/10")

1234567890

KANSAS BLOCK - 1 or 2 color print or tackle twill (4\*/6\*/8")

1234567890

CAXTON ROMAN - 1 or 2 color print or tackle twill (4\*/5\*/6\*/8")

1234567890

SYRACUSE BLOCK - tackle twill (3\*/4\*/6\*/8")

1234567890

NIKE TRUE BLOCK - 1 or 2 color print or tackle twill (4\*/10")

123456789

BLOCK WITH OUTLINE - 1 or 2 color print only (4\*/8\*/10")

1234567890

BOULDER BOLD - 3 color tackle twill

1234567890

MIAMI (NOT SHOWN) - 1 or 2 color print or tackle twill (4\*/5\*/6\*/8\*/9")



524882 | NIKE LUNAR HYPERDUNK 2012 TB \$140.00

SIZES: 6-14, 15, 16, 17, 18 OFFER DATE: 9/1

Revolutionary.  
UPPER: Dynamic protection and containment.  
MIDSOLE: Superior cushioning.  
OUTSOLE: Multidirectional traction.

001 Black/Metallic Silver-White	100 White/Black-Metallic Silver
300 Gorge Green/White	400 University Blue/White
401 Midnight Navy/White	402 Game Royal/White
500 Court Purple/White	600 Team Red/White
601 Gym Red/White	800 Orange Blaze/White

NEW

525017 | NIKE ZOOM SOLDIER VI TB \$120.00

SIZES: 7-14, 15, 16, 17, 18 OFFER DATE: 9/1

The lightest Zoom Soldier to date that incorporates the latest footwear innovation with signature styling and detailing.  
UPPER: Zonal performance hyperfuse upper reduces layers and provides lightweight strength and increased breathability.  
MIDSOLE: Phylon midsole with lightweight responsive bottom loaded Zoom Air in the heel and top loaded Zoom Air in the forefoot.  
OUTSOLE: Solid rubber outsole with modified herringbone traction with signature details embedded in low traction areas.

002 Wolf Grey/Gorge Green-White	003 Wolf Grey/Gym Red-White
004 Wolf Grey/Black-White	005 Wolf Grey/Midnight Navy-White
006 Wolf Grey/Game Royal-White	

NEW



NIKE ZOOM



525019 | NIKE ZOOM HYPERFUSE 2012 TB \$110.00

SIZES: 7-14, 15, 16, 17, 18 OFFER DATE: 9/1

Update to one of the most adopted and coveted on-court basketball offering that now offers a better fit for a wider range of players.  
UPPER: Updated hyprefuse technology that utilizes stretch mesh and foot mapping to ensure enhanced fit and feel for a wide range of players and foot types.  
MIDSOLE: Phylon midsole that focuses on stability through high wrapping rubber sidewalls that keeps the on the footbed and eliminates excessive flexing.  
OUTSOLE: Data informed finely tuned outsole that maximizes traction, cushioning, durability and minimizes weight.

001 Black/White	100 White/Black
300 Gorge Green/White	400 Game Royal/White
401 Midnight Navy/White	600 Gym Red/White

NEW

NIKE ZOOM





524867 | AIR MAX HYPERAGGRESSOR TB \$100.00

SIZES: 7-14, 15, 16, 17, 18, 19, 20, 21, 22 OFFER DATE: 9/1

A bold no nonsense shoe geared towards those players who approach the game of basketball with the same relentlessness.

UPPER: Hyperfuse technology allows us to be lighter, stronger and more durable through an innovative method of making footwear.

MIDSOLE: Injected Phylon midsole coupled with Max Air in the heel provide maximum impact protection and a well cushioned ride.

OUTSOLE: Solid rubber outsole with herringbone traction pattern for exceptional traction and durability.

001 Black/White-Metallic Silver	100 White/Black-Metallic Silver
300 Gorge Green/White	400 Game Royal/White
401 Midnight Navy/White	402 University Blue/White
500 Court Purple/White	600 Gym Red/White
601 Team Red/White	800 Orange Blaze/White

NEW  MAX AIR



312618 | BENASSI SWOOSH \$22.00

SIZES: 6-18 (Whole) OFFER DATE: C/O

Classic team slide, incredible value.

UPPER: One-piece synthetic upper with jersey lining and foam package

MIDSOLE: Injected Phylon midsole

OUTSOLE: Injected Phylon outsole

011 Black/White



ELITE CHAMPIONSHIP AIRLOCK 8P

**SIZES:** 6, 7 **OFFER DATE:** 07/01/12

Airlock Technology/ Holds exact air pressure over 85x longer than closest competition • Fully Adjustable / Adjust the air pressure exactly where you want it • Precision Feel / Consistent handle with precise, steady air pressure week after week • Game-Dry Composite Leather / Micro-perforated material helps keep sweat from collecting on the surface of the ball for a sure handle and ultra-soft touch all game long • Soft-touch woven microfiber backing/ Delivers a soft, indoor feel with deep-pebble grip • Wide channels/ Shooter-preferred wide channels help your fingers find a groove • Nike Elite basketballs preferred by over 250 major college programs • NFHS approved for high school play • Indoor use • NFHS approved.

BB0495-801	Amber/(Black-Platinum)	Size 7	\$70.00
BB0496-801	Amber/(Black-Platinum)	Size 6	\$70.00



GAME TACK

**SIZES:** 5, 6, 7 **OFFER DATE:** C/O

77% Rubber/12% Nylon/11% Synthetic Leather - Non-Woven.

BB0451-801	Amber/(Black-Platinum)	Size 7	\$20.00
BB0452-801	Amber/(Black-Platinum)	Size 6	\$20.00
BB0453-801	Amber/(Black-Platinum)	Size 5	\$20.00



ELITE TOURNAMENT 8-PANEL

**SIZES:** 6, 7 **OFFER DATE:** C/O

Confident grip and feel / New deep-pebbled composite leather with Microfiber backing for soft feel and solid handle • Quicker shooting alignment / Wrap-around panels remove channel intersections for a quicker alignment on each shot • Better ball control / Wide channels help fingers find a groove for precise control • NFHS approved.

BB0401-801	Amber/(Black-Platinum)	Size 7	\$45.00
BB0402-801	Amber/(Black-Platinum)	Size 6	\$45.00



BA4402 | NIKE BASKETBALL BALL CARRY BAG \$45.00

**SIZES:** MISC **OFFER DATE:** C/O

Nylon construction, full-length zipper closure • Holds six official-size basketballs • Padded shoulder strap

067 Black/Black/(White)



ELITE COMPETITION 8-PANEL

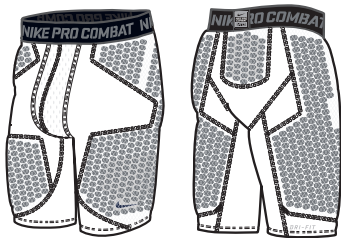
**SIZES:** 5, 6, 7 **OFFER DATE:** C/O

Soft-touch, superb grip / Game-Dry composite leather is micro-perforated to keep the ball grippy and dry in your hand • Quicker shooting alignment / Wrap-around panels remove channel intersections for a quicker alignment on each shot • Better ball control / Wide channels help fingers find a groove for precise control • NFHS approved

BB0446-801	Amber/(Black-Platinum)	Size 7	\$32.00
BB0445-801	Amber/(Black-Platinum)	Size 6	\$32.00
BB0444-801	Amber/(Black-Platinum)	Size 5	\$32.00







**533561 NPC HYPERSTRONG BASKETBALL SHORT 2.0 \$80.00\***

**SIZES:** S, M, L, XL, 2XL **OFFER DATE:** 09/01/12  
**\*15% upcharge for 3XL, 4XL** **END DATE:** 01/01/14

**FABRIC:** Body: Dri-FIT. 170g. 84% polyester/16% spandex. Gusset: Dri-FIT. 246g. 90% polyester/10% spandex.

**010** Black/Cool Grey **100** White/Cool Grey

NEW



**375887 NPC ATTACK COMPRESSION VIS ELBOW SLEEVE \$25.00**

**SIZES:** S/M, L/XL **OFFER DATE:** 09/01/11  
**END DATE:** 01/01/13

The Nike Pro Combat Vis Elbow Sleeve provides lightweight protection for the serious basketball athlete who wants to dominate the competition. The sleeve utilizes ergonomically designed Deflex floating foam technology in the elbow to cushion impact. Mesh covering provides optimal breathability and flexibility. Superior Dri-FIT fabric wicks moisture to help keep you dry, and flatlocked seams were engineered for movement and to reduce chafing. Swoosh design trademark heat transfer on wrist. Sleeve length: 17" (size L/XL)

**FABRIC:** Body: Dri-FIT 170 g. 84% polyester/16% spandex. Pads: Ethylene vinyl acetate foam. Pad overlay: 158 g. 70% polyester/30% spandex.

**010** Black/Cool Grey/(Cool Grey) **101** White/Neutral Grey/(Cool Grey)

DRI-FIT COMPRESSION





**NIKE ELITE BASKETBALL SOCK** **\$14.00**

Orders accepted in increments of 6 PPK units only

**SIZES:** MISC **OFFER DATE:** C/O

Midfoot Compression Fit-Secure stable design helps keep socks and cushioning in place • Footstrike Cushioning (patent pending) / New, clearly defined pattern is even more closely aligned to pressure patterns on a runners feet • Dri-FIT fabric / Wicks away moisture to help keep feet dry and cool • Anatomical left and right / Superior fit and cushioning

**FABRIC:** 62% polyester/21% nylon/15% cotton/2% spandex.

**SIZE:** XL sock = M 12-15 shoe size; L sock = M 8-12 shoe size, W 10-13 shoe size; M sock = M 6-8 shoe size, W 6-10 shoe size.

SX3694-002	Black/Varsity Red/(Varsity Red)	X-LARGE (M12-15)	\$14.00
SX3694-007	Black/White/(White)	X-LARGE (M12-15)	\$14.00
SX3694-102	White/Midnight Navy/(Midnight Navy)	X-LARGE (M12-15)	\$14.00
SX3694-107	White/Black/(Black)	X-LARGE (M12-15)	\$14.00
SX3694-126	White/University Blue/(University Blue)	X-LARGE (M12-15)	\$14.00
SX3694-143	White/Game Royal/(Game Royal)	X-LARGE (M12-15)	\$14.00
SX3694-160	White/Varsity Red/(Varsity Red)	X-LARGE (M12-15)	\$14.00
SX3694-345	Gorge Green/White/(White)	X-LARGE (M12-15)	\$14.00
SX3694-401	Midnight Navy/White/(White)	X-LARGE (M12-15)	\$14.00
SX3694-421	Concord/White/(White)	X-LARGE (M12-15)	\$14.00
SX3694-441	Game Royal/White/(White)	X-LARGE (M12-15)	\$14.00
SX3694-601	Varsity Red/White/(White)	X-LARGE (M12-15)	\$14.00
SX3694-642	Team Maroon/White/(White)	X-LARGE (M12-15)	\$14.00
SX3693-002	Black/Varsity Red/(Varsity Red)	LARGE (M8-12, W10-13)	\$14.00
SX3693-007	Black/White/(White)	LARGE (M8-12, W10-13)	\$14.00
SX3693-102	White/Midnight Navy/(Midnight Navy)	LARGE (M8-12, W10-13)	\$14.00
SX3693-107	White/Black/(Black)	LARGE (M8-12, W10-13)	\$14.00
SX3693-126	White/University Blue/(University Blue)	LARGE (M8-12, W10-13)	\$14.00
SX3693-143	White/Game Royal/(Game Royal)	LARGE (M8-12, W10-13)	\$14.00
SX3693-160	White/Varsity Red/(Varsity Red)	LARGE (M8-12, W10-13)	\$14.00
SX3693-345	Gorge Green/White/(White)	LARGE (M8-12, W10-13)	\$14.00
SX3693-401	Midnight Navy/White/(White)	LARGE (M8-12, W10-13)	\$14.00
SX3693-421	Concord/White/(White)	LARGE (M8-12, W10-13)	\$14.00
SX3693-441	Game Royal/White/(White)	LARGE (M8-12, W10-13)	\$14.00
SX3693-601	Varsity Red/White/(White)	LARGE (M8-12, W10-13)	\$14.00
SX3693-642	Team Maroon/White/(White)	LARGE (M8-12, W10-13)	\$14.00
SX3692-002	Black/Varsity Red/(Varsity Red)	MEDIUM (M6-8, W6-10)	\$14.00
SX3692-007	Black/White/(White)	MEDIUM (M6-8, W6-10)	\$14.00
SX3692-102	White/Midnight Navy/(Midnight Navy)	MEDIUM (M6-8, W6-10)	\$14.00
SX3692-107	White/Black/(Black)	MEDIUM (M6-8, W6-10)	\$14.00
SX3692-126	White/University Blue/(University Blue)	MEDIUM (M6-8, W6-10)	\$14.00
SX3692-143	White/Game Royal/(Game Royal)	MEDIUM (M6-8, W6-10)	\$14.00
SX3692-160	White/Varsity Red/(Varsity Red)	MEDIUM (M6-8, W6-10)	\$14.00
SX3692-345	Gorge Green/White/(White)	MEDIUM (M6-8, W6-10)	\$14.00
SX3692-401	Midnight Navy/White/(White)	MEDIUM (M6-8, W6-10)	\$14.00
SX3692-421	Concord/White/(White)	MEDIUM (M6-8, W6-10)	\$14.00
SX3692-441	Game Royal/White/(White)	MEDIUM (M6-8, W6-10)	\$14.00
SX3692-601	Varsity Red/White/(White)	MEDIUM (M6-8, W6-10)	\$14.00
SX3692-642	Team Maroon/White/(White)	MEDIUM (M6-8, W6-10)	\$14.00

DRI-FIT



**NIKE ELITE BASKETBALL KAY YOW CREW** **\$14.00**

Orders accepted in increments of 6 PPK units only

**SIZES:** MISC **OFFER DATE:** 9/1

Strategic multi-density cushioning softens the impact where it counts • Dri-FIT fabric pulls away sweat to help keep you cool and comfortable • Supportive fit with arch compression • Left/Right specific design for a better fit • Reinforced heel and toe for enhanced durability

**FABRIC:**

**SIZE:** L sock = M 8-12 shoe size, W 10-13 shoe size; M sock = M 6-8 shoe size, W 6-10 shoe size.

SX4513-166	White/Pinkfire II/(Pinkfire II)	LARGE (M8-12, W10-13)	\$14.00
SX4513-611	Pinkfire II/White/(White)	LARGE (M8-12, W10-13)	\$14.00
SX4512-166	White/Pinkfire II/(Pinkfire II)	MEDIUM (M6-8, W6-10)	\$14.00
SX4512-611	Pinkfire II/White/(White)	MEDIUM (M6-8, W6-10)	\$14.00

NEW DRI-FIT



**NIKE ELITE 2-LAYER BASKETBALL CREW** **\$18.00**

Orders accepted in increments of 6 PPK units only

**SIZE:** Large **OFFER DATE:** 9/1

Two layers of soft cushioning reduce impact and friction • Strategic multi-density cushioning softens the impact where it counts • Dri-FIT fabric pulls away sweat to help keep you cool and comfortable • Supportive fit with arch compression • Left/Right specific design for a better fit

**FABRIC:**

**SIZE:** L sock = M 8-12 shoe size, W 10-13 shoe size.

SX4584-007	Black/White/(White)	LARGE (M8-12, W10-13)	\$18.00
SX4584-101	White/(Black)	LARGE (M8-12, W10-13)	\$18.00

NEW DRI-FIT