



# **MEN'S FOOTBALL**

**FALL 2012**



[NIKETEAM.COM](http://NIKETEAM.COM)



473569NIKE PRO COMBAT SPEED JERSEY\$70.00\*

SIZES: S, M, L, XL, 2XL  
\*15% upcharge for 3XL

OFFER DATE: 06/01/12  
END DATE: 06/01/15

Nike football's system of dress stock version of our pinnacle jersey style. Cordura spandex material and four way stretch mesh strategically placed panels for ventilation and lock down fit. 2-ply reinforced shoulder for increased durability. Body width: 20" (size large), Body length: 35" (all sizes).

FABRIC: Body: Color: 86% nylon/14% spandex. White: 86% polyester/14% spandex.

012 Black/White/(White)	100 White/White/(White)	106 White/Black/(Black)
107 White/Navy/(Navy)	108 White/Royal/(Royal)	109 White/Scarlet/(Scarlet)
111 White/Dark Green/(Dark Green)	342 Dark Green/Dark Green/(White)	420 Navy/White/(White)
494 Royal/White/(White)	658 Scarlet/White/(White)	

NEW



473570NIKE PRO COMBAT SPEED PANT\$75.00\*

SIZES: S, M, L, XL, 2XL  
\*15% upcharge for 3XL

OFFER DATE: 06/01/12  
END DATE: 06/01/15

Nike football's system of dress stock version of our pinnacle style integrated Nike football pant. Cordura material pant comes with compression molded, integrated knee pad. Set on stripe over vented mesh side panels allow for breathability. Stretch fabrication and integrated belt and with padded hip design work in conjunction with "Nike Pro combat hyperstrong hard plate girdle" style. Hip width: 20.25", Inseam length: 15" (size large).

FABRIC: Body: Color: 86% nylon/14% spandex. White: 86% polyester/14% spandex.

012 Black/White/(White)	100 White/White/(White)	342 Dark Green/White/(White)
420 Navy/White/(White)	494 Royal/White/(White)	658 Scarlet/White/(White)

NEW



424173STOCK COMBAT PANT\$70.00\*

SIZES: S, M, L, XL, 2XL  
\*15% upcharge for 3XL

OFFER DATE: 06/01/11  
END DATE: 06/01/14

New "Best in Class" Nike football pant. This pant strips away what is not needed and incorporates what today's football athletes need. Pant comes with compression molded, integrated knee pad design. Fully sublimated vented mesh side panels allow for breathability and team customization. New stretch spandex fabrication and integrated belt and padded hip/belt design work in conjunction with "Nike Pro combat hard plate" style. Option to add team name direct embroidery on back waist band. Embroidered Swoosh design on upper right hip. Hip width: 18.75", Inseam length: 15" (size large).

FABRIC: Body: White: 86% polyester/14% spandex. Color: 86% nylon/14% spandex.

010 Black/(White)	057 Pewter/(Black)	100 White/(Black)
419 Navy/(White)		



477689REPLACEMENT KNEE PADS\$5.00

SIZES: ONE SIZE

OFFER DATE: 06/01/10  
END DATE: 06/01/13

Compression molded pads can be used in any pant with knee pockets.

One Pair



424133 | CRACK BACK GAME JERSEY

\$65.00\*

SIZES: S, M, L, XL, 2XL

OFFER DATE: 06/01/11

\*15% upcharge for 3XL

END DATE: 06/01/14

Tapered fit, full-length performance football jersey. Contrast side panel insert extending from underarm to neck insert. Contrast shoulder inset for fit and two-ply construction for added durability. Embroidered Swoosh design trademark at upper left chest and Nike Team Sports jock tag at lower left hem. Stock product comes blank. Body width: 21" (size large), Body length: 34.5" (all sizes).

FABRIC: Body: Color: 86% nylon/14% spandex. White: 100% polyester; 86% polyester/14% spandex.

012 Black/White/(White)	100 White/White/(Black)	104 White/Cardinal/(Cardinal)
106 White/Black/(Black)	107 White/Navy/(Navy)	108 White/Royal/(Royal)
109 White/Scarlet/(Scarlet)	110 White/Purple/(Purple)	111 White/Dark Green/(Dark Green)
112 White/Vegas Gold/(Black)	115 White/Dark Maroon/(Dark Maroon)	342 Dark Green/White/(White)
420 Navy/White/(White)	494 Royal/White/(White)	546 Purple/White/(White)
612 Cardinal/White/(White)	658 Scarlet/White/(White)	670 Dark Maroon/White/(White)
784 Vegas Gold/(Black)		

Youth #424135 / XS-2XL / \$55.00 / Body width: 17.5", Body length: 26.25" (size medium)

Y



378261 | PERFORMANCE GAME PANT

\$62.00\*

SIZES: S, M, L, XL, 2XL

OFFER DATE: 06/01/10

\*15% upcharge for 3XL

END DATE: 06/01/13

Performance game pant with three-piece back and 2.5" silicone gripper elastic slotted waistband. Spandex thigh and knee pad pocket system set-on with three-step zigzag construction designed to hold various pads firmly in place. Hemmed elastic leg opening. No fly construction on front of pant for optimal fit. Embroidered Swoosh design trademark at upper right hip. Hip width: 18.25", Inseam length: 15" (size large).

FABRIC: 86% polyester/14% spandex.

010 Black/(White)	057 Pewter/(Black)	100 White/(Black)
341 Dk Green/(White)	419 Navy/(White)	493 Royal/(White)
545 Purple/(White)	657 Scarlet/(White)	716 Bright Gold/(Black)
783 Vegas Gold/(Black)		



113780 | STOCK BELT

\$8.00

SIZES: ONE SIZE FITS MOST

OFFER DATE: 06/01/05

END DATE: 06/01/13

Heavyweight nylon fabric belt with 1.5" D-ring closure.

FABRIC: 100% nylon.

010 Black	057 Pewter	100 White
341 Dark Green	419 Navy	493 Royal
545 Purple	610 Cardinal	657 Scarlet
669 Dark Maroon	716 Bright Gold	783 Vegas Gold



473568 VELOCITY PRACTICE JERSEY \$40.00\*

SIZES: S, M, L, XL, 2XL OFFER DATE: 06/01/12  
\*15% upcharge for 3XL END DATE: 06/01/15

Fit and performance driven practice jersey allows a tighter look and feel and aligns with our game day jerseys. Spandex added around and under the arm to allow movement for a better fit. Double layer yolk. Breathable open hole mesh on front and back body. Enhanced neckband with spandex to create a structured neckline. Swoosh design trademark at upper left chest. Nike Team Sports jock tag at lower left hem. Body width: 23", Body length: 27" (size large).

010 Black/(White)	057 Pewter/(Black)	100 White/(Black)
341 Dark Green/(White)	419 Navy/(White)	448 Light Blue/(White)
493 Royal/(White)	545 Purple/(White)	610 Cardinal/(White)
657 Scarlet/(White)	669 Dark Maroon/(White)	783 Vegas Gold/(Black)

NEW

424134 VELOCITY PANT \$40.00\*

SIZES: S, M, L, XL, 2XL OFFER DATE: 06/01/11  
\*15% upcharge for 3XL END DATE: 06/01/14

Hip width: 18.25", Inseam length: 15" (size large).

FABRIC: Body: 86% polyester/14% spandex.

010 Black/(White)	100 White/(Black)
-------------------	-------------------

395273 CORE PRACTICE JERSEY \$22.00\*

SIZES: S, M, L, XL, 2XL OFFER DATE: 06/01/10  
\*15% upcharge for 3XL END DATE: 06/01/13

Breathable mesh football jersey with open arm construction and belt-length cut. Reinforced two-ply yoke for added durability. Embroidered Swoosh design trademark at upper left chest. Nike Team Sports jock tag at lower left hem. Youth style is constructed with single-ply yoke. Stock product comes blank. Body width: 23", Body length: 28" (size large).

FABRIC: Colors: 100% nylon. White: 100% polyester.

010 Black/(White)	057 Pewter/(Black)	100 White/(Black)
341 Dk Green/(White)	419 Navy/(White)	448 Lt Blue/(White)
493 Royal/(White)	545 Purple/(White)	610 Cardinal/(White)
657 Scarlet/(White)		

Youth #395272 / XS-2XL / \$15.00 / Body width: 12.25", Body length: 24" (size medium)

Y

378272 YOUTH COMBAT INTEGRATED \$55.00\*

SIZES: XS, S, M, L, XL, 2XL OFFER DATE: 06/01/10  
\*15% upcharge for 3XL END DATE: 06/01/13

The youth combat pant allows today's youth athlete to perform at an elite level. 7-piece compression molded integrated pad system set. Four-way stretch spandex fabrication provides optimal performance for the youth football athlete. Plain front fly, 1" self-fabric belt with 1" D-ring closure. Elasticized leg opening. Embroidered Swoosh design trademark at upper right hip. Hip width: 13", Inseam length: 11.375" (size medium).

FABRIC: Body: Colors: 86% nylon/14% spandex. Body: White: 86% polyester/14% spandex.

010 Black/White/(White)	100 White/White/(Black)	419 Navy/White/(White)
493 Royal/White/(White)	657 Scarlet/White/(White)	783 Vegas Gold/White/(Black)

Y

378273 YOUTH RECRUIT INTEGRATED PANT \$40.00\*

SIZES: XS, S, M, L, XL, 2XL OFFER DATE: 06/01/10  
\*15% upcharge for 3XL END DATE: 06/01/13

Performance game pant with 7-piece pad system set. Plain front fly, 1" self-fabric belt with 1" D-ring closure. Elasticized leg opening. Embroidered Swoosh design trademark at upper right hip. Hip width: 13", Inseam length: 12" (size medium).

FABRIC: 100% polyester.

010 Black/(White)	100 White/(Black)
-------------------	-------------------

Y





**424139 VAPOR CARBON SL TOP \$40.00**

**SIZES:** S, M, L, XL, 2XL  
\*15% upcharge for 3XL, 4XL  
**OFFER DATE:** 06/01/11  
**END DATE:** 06/01/14  
Premium 7-on-7 football uniform. Fully sublimated football top with new design graphic. Teams can customize team color, team name and individual player number on front and back of jersey. Body width: 17", Body length: 26" (size large).  
**FABRIC:** Body: 88% polyester/12% spandex. Mesh: 86% polyester/14% spandex.

MOD

**424140 VAPOR CARBON LOOSE TOP \$45.00**

**SIZES:** S, M, L, XL, 2XL  
\*15% upcharge for 3XL, 4XL  
**OFFER DATE:** 06/01/11  
**END DATE:** 06/01/14  
Fully sublimated football design graphic. Teams can customize team color, team name and individual player number. New material and new graphic for this loose-fitting top for increased range of motion. Body width: 22.75", Body length: 30.25" (size large).  
**FABRIC:** 100% polyester.

MOD

**424141 VAPOR CARBON SHORT \$50.00**

**SIZES:** S, M, L, XL, 2XL  
\*15% upcharge for 3XL, 4XL  
**OFFER DATE:** 06/01/11  
**END DATE:** 06/01/14  
Fully sublimated football design graphic. Teams can customize team color, team name and individual player number on short side panel. New graphic option and ability to customize team name on center back waist. Hip width: 25", Inseam length: 10" (size large).  
**FABRIC:** 100% polyester.

MOD

**387007 SPEED FURY TOP \$40.00**

**SIZES:** S, M, L, XL, 2XL  
\*15% upcharge for 3XL, 4XL  
**OFFER DATE:** 06/01/10  
**END DATE:** 06/01/13  
Premium 7-on-7 football uniform. Fully sublimated football top with new design graphic. Teams can customize team color, team name and individual player number on front and back of jersey. Body width: 17", Body length: 26" (size large).  
**FABRIC:** Body: 88% polyester/12% spandex. Mesh: 86% polyester/14% spandex.

MOD

**378259 SPEED FURY LOOSE TOP \$45.00**

**SIZES:** S, M, L, XL, 2XL  
\*15% upcharge for 3XL, 4XL  
**OFFER DATE:** 06/01/10  
**END DATE:** 06/01/13  
Fully sublimated football design graphic. Teams can customize team color, team name and individual player number. New material and new graphic for this loose-fitting top for increased range of motion. Body width: 22.75", Body length: 30" (size large).  
**FABRIC:** 100% polyester.

MOD

**386771 SPEED FURY SHORT \$50.00**

**SIZES:** S, M, L, XL, 2XL  
\*15% upcharge for 3XL, 4XL  
**OFFER DATE:** 06/01/10  
**END DATE:** 06/01/13  
Fully sublimated football design graphic. Teams can customize team color, team name and individual player number on short side panel. New graphic option and ability to customize team name on center back waist. Hip width: 25", Inseam length: 10" (size large).  
**FABRIC:** 100% polyester.

MOD



NIKE PRO COMBAT SPEED JERSEY

See below\*

SIZES: S, M, L, XL, 2XL  
\*15% upcharge for 3XL, 4XL

OFFER DATE: 06/01/12  
END DATE: 06/01/15

Nike football's system of dress pinnacle Nike design using Nike Team football's lightest stretch woven nylon fabrication on shoulder, sleeve and front back panels for performance fit and durability. 2-ply reinforced shoulder for increased durability. Four-way stretch mesh panels at front and back to optimize breathability, fit and performance. Added "Flywire" design aesthetic detail on neck to align with college rivalry game uniform. Swoosh design trademark on left front chest and Nike Team Sports jock tag at lower left hem. Body width: 20.5" (size large), Body length: 35" (all sizes). **Custom Logo Available.**

FABRIC: Body: Color: 91% nylon/9% spandex. White: 91% polyester/9% spandex.

473572	Blank	\$140.00*
475026	Blank Cap Sleeve	\$140.00*
337309	One-Color Screen Print	\$160.00*
337310	Two-Color Screen Print	\$170.00*
397644	One-Color Lightweight Stretch Twill	\$180.00*
397645	Two-Color Lightweight Stretch Twill	\$190.00*
397646	Three-Color Lightweight Stretch Twill	\$200.00*
442783	Sublimated Lightweight Stretch Twill	\$190.00*

NEW MOD C

NIKE PRO COMBAT SPEED PANT

See below\*

SIZES: S, M, L, XL, 2XL  
\*15% upcharge for 3XL, 4XL

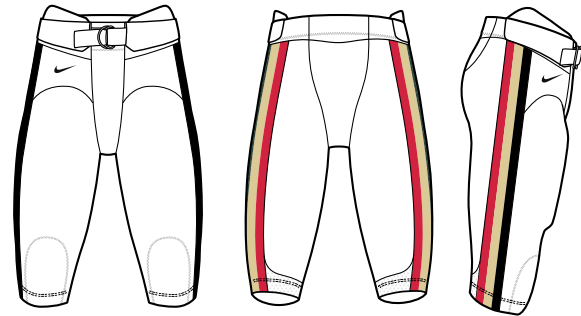
OFFER DATE: 06/01/12  
END DATE: 06/01/15

Nike football's system of dress pinnacle Nike design using Nike Team football's lightest stretch nylon fabrication. Integrated hip and knee pad. Side panel digitally printed in team name, 3 color stripe and solid option. Elastic leg opening. Swoosh design trademark at upper right hip. Stretch fabrication and integrated belt and with padded hip design work in conjunction with "Nike Pro combat hard plate" style. Hip width: 20.25", Inseam length: 15" (size large). **Custom Logo Available.**

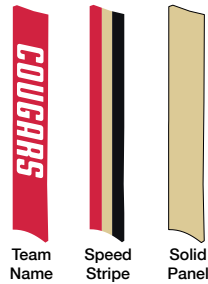
FABRIC: Body: Color: 91% nylon/9% spandex. White: 91% polyester/9% spandex.

473573	Integrated	\$105.00*
486154	Non-Integrated	\$90.00*

NEW MOD C



SIDE PANEL OPTIONS





CRACK BACK GAME JERSEY

See below\*

SIZES: S, M, L, XL, 2XL

OFFER DATE: 06/01/12

\*15% upcharge for 3XL, 4XL

END DATE: 06/01/15

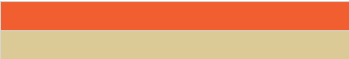
Tapered fit, full-length performance football jersey featuring a two-ply high tenacity Cordura® yoke and sleeve, high tenacity upper front chest, four-way stretch mesh on front and back panel. Contrast side panel insert with piping option and contrast shoulder panel insert. Embroidered Swoosh design trademark at upper left. Body width: 21" (size large), Body length: 34.5" (all sizes). **Custom Logo Available.**

FABRIC:

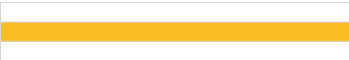
473574	Blank	\$70.00*
475030	Blank Cap Sleeve	\$70.00*
337309	One-Color Screen Print	\$90.00*
337310	Two-Color Screen Print	\$100.00*
280405	One-Color Standard Twill	\$100.00*
280406	Two-Color Standard Twill	\$110.00*
397567	Three-Color Standard Twill	\$120.00*
442782	Sublimated Standard Twill	\$110.00*
442783	Sublimated Lightweight Stretch Twill	\$120.00*
519182	Digital Neck And Sleeve Stripes	\$12.00*



DOUBLE STRIPE



OLD SCHOOL STRIPE



5 STRIPE



SKINNY STRIPE



473575

CRACK BACK PANT

\$80.00

SIZES: S, M, L, XL, 2XL

OFFER DATE: 06/01/12

\*15% upcharge for 3XL, 4XL

END DATE: 06/01/15

Game pant featuring a flyless front with three-piece back and 2-1/2" non-roll elastic waistband. Contrasting side inserts. Spandex thigh and kneepad pocket system set on with three-step zig-zag stitch construction designed to hold various sized pads in place.Elasticized leg opening and embroidered Swoosh design trademark at upper right hip. Hip width: 18.25", Inseam length: 15" (size large). **Custom Logo Available.**

FABRIC:



ENFORCER JERSEY

See below\*



SIZES: S, M, L, XL, 2XL  
\*15% upcharge for 3XL, 4XL

OFFER DATE: 06/01/09  
END DATE: 06/01/13

High-performance original Nike design football game jersey. High-tenacity Cordura® knit fabrication and four-way stretch mesh provides football athletes with the latest in performance fabrics to optimize fit and durability. High-tenacity knit fabrication reinforced with second layer of fabric for added durability. Four-way stretch mesh placed in zones for optimal breathability. Embroidered Swoosh design trademark at center front neck and Nike Team Sports jock tag at lower left hem. Name available with 1" embroidery only. New name plate option available. Body width: 19.5" (size large), Body length: 35" (all sizes). **Custom Logo Available.**

**FABRIC:** Colors: Body - 86% nylon/14% spandex. Colors: Mesh - 88% nylon/12% spandex. White: Body - 86% polyester/14% spandex. White: Mesh - 89% polyester/11% spandex.

350786	Blank	\$120.00*
337371	Blank Cap Sleeve	\$120.00*
280403	One-Color Stretch Twill	\$164.00*
280404	Two-Color Stretch Twill	\$174.00*
397647	Three-Color Stretch Twill	\$184.00*
397644	One-Color Lightweight Stretch Twill	\$160.00*
397645	Two-Color Lightweight Stretch Twill	\$170.00*
397646	Three-Color Lightweight Stretch Twill	\$180.00*
442783	Sublimated Lightweight Stretch Twill	\$170.00*

MOD C

378268 | ENFORCER INTEGRATED PANT

\$90.00



SIZES: S, M, L, XL, 2XL  
\*15% upcharge for 3XL, 4XL

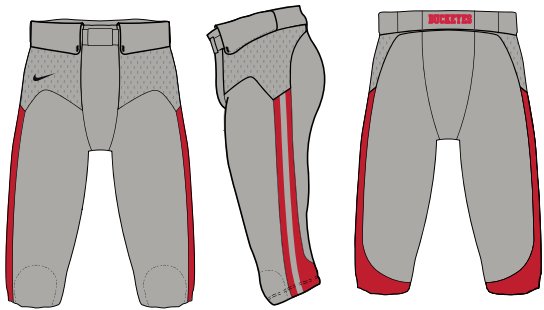
OFFER DATE: 06/01/10  
END DATE: 06/01/14

New "Best in Class" Nike football pant. This pant strips away what is not needed and incorporates what today's football athletes need. Pant comes with compression molded, integrated knee pad design. Fully sublimated vented mesh side panels allow for breathability and team customization. New stretch spandex fabrication and integrated belt and padded hip/belt design work in conjunction with "Nike Pro combat hard plate" style. Option to add team name direct embroidery on back waist band. Embroidered Swoosh design on upper right hip. Hip width: 18.75", Inseam length: 15" (size large). **Custom Logo Available.**

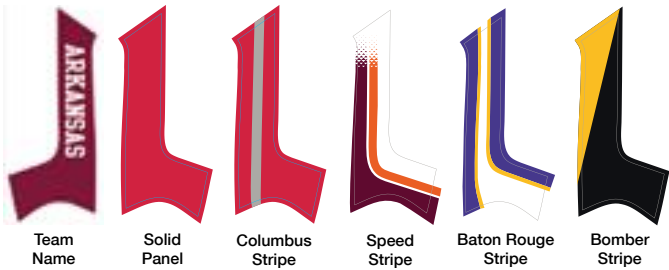
**FABRIC:** Body: 86% polyester/14% spandex. Mesh: 88% nylon/12% spandex.

394875	1" Team Name Embroidery	\$10.00
--------	-------------------------	---------

MOD C



SIDE PANEL OPTIONS







**LIZARD PRINT**



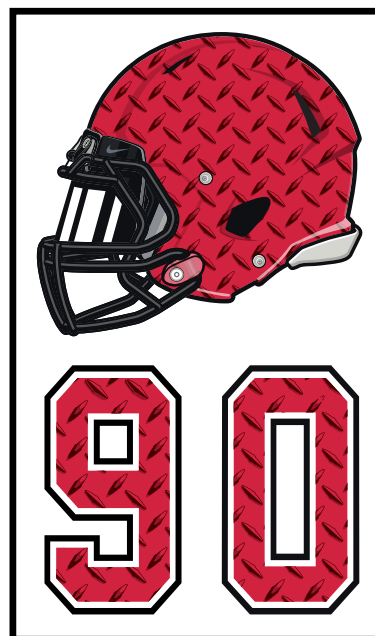
**CANES PRINT**



**CAMO PRINT**



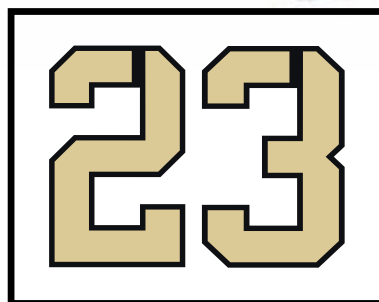
**CARBON FIBER PRINT**



**DIAMOND PLATE PRINT**



**SPEED PRINT**



**STEEL CITY**

GUNNER GAME JERSEY

See below\*



SIZES: S, M, L, XL, 2XL  
\*15% upcharge for 3XL, 4XL  
OFFER DATE: 06/01/10  
END DATE: 06/01/13  
Body width: 20" (size large), Body length: 34.5" (all sizes). **Custom Logo Available.**  
FABRIC: Body: White: 86% polyester/14% spandex. Color: 86% nylon/14% spandex.

424136	Blank	\$100.00*
475162	Blank Cap Sleeve	\$100.00*
280403	One-Color Stretch Twill	\$144.00*
280404	Two-Color Stretch Twill	\$154.00*
397647	Three-Color Stretch Twill	\$164.00*
397644	One-Color Lightweight Stretch Twill	\$140.00*
397645	Two-Color Lightweight Stretch Twill	\$150.00*
397646	Three-Color Lightweight Stretch Twill	\$160.00*
442783	Sublimated Lightweight Stretch Twill	\$150.00*

This style available in Texas Orange.

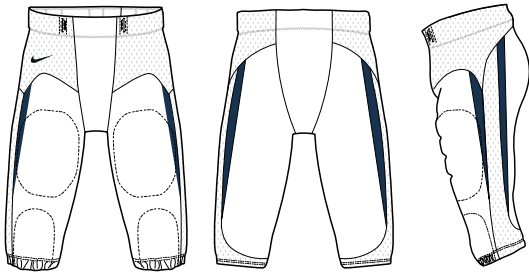


424137 GUNNER GAME PANT

\$85.00



SIZES: S, M, L, XL, 2XL  
\*15% upcharge for 3XL, 4XL  
OFFER DATE: 06/01/10  
END DATE: 06/01/13  
Performance game pant with contrast side inserts, ten-slot, non-roll elastic tunnel waistband. Spandex thigh and kneepads with three-step zigzag construction are designed to hold various sized pads firmly in place. Four-way stretch mesh side panel and waist for added breathability. Embroidered Swoosh design trademark upper right hip. Hip width: 18.25", Inseam length: 15.125" (size large). **Custom Logo Available.**  
FABRIC: Body: White: 86% polyester/14% spandex. Color: 86% nylon/14% spandex.





DESTROYER GAME JERSEY

See below\*



SIZES: S, M, L, XL, 2XL  
\*15% upcharge for 3XL, 4XL

OFFER DATE: 06/01/09  
END DATE: 06/01/15

Tapered fit, full-length performance football jersey. Two-ply reinforced at shoulder, back yoke and sleeve for durability in high impact areas. Side panel spandex inserts for tapered fit and range of motion. Tonal color or contrast rib knit at neck and cuff. Embroidered Swoosh design trademark at upper left chest and Nike Team Sports jock tag at lower left hem. New name plate and home plate options available. Body width: 22.25" (size large), Body length: 34.5" (all sizes). **Custom Logo Available.**

FABRIC: Colors: Body/yoke - 100% nylon. Side panel - 86% nylon/14% spandex. White: Body/yoke - 100% polyester. Side panel - 86% polyester/14% spandex.

337356	Blank	\$60.00*
475194	Blank Cap Sleeve	\$60.00*
337309	One-Color Screen Print	\$80.00*
337310	Two-Color Screen Print	\$90.00*
280405	One-Color Standard Twill	\$90.00*
280406	Two-Color Standard Twill	\$100.00*
397567	Three-Color Standard Twill	\$110.00*
442782	Sublimated Standard Twill	\$100.00*
442783	Sublimated Lightweight Stretch Twill	\$110.00*

Youth #346537 / S-2XL / \$45.00 / Blank / \$65.00 - One-Color Screen Print / \$75.00 - Two-Color Screen Print / Body width: 18.5", Body length: 26.25" (size medium)

MOD Y C



346538 DESTROYER GAME PANT

\$75.00



SIZES: S, M, L, XL, 2XL  
\*15% upcharge for 3XL, 4XL

OFFER DATE: 06/01/09  
END DATE: 06/01/15

Game pant with choice of contrast colored piping and inset at side panel. Ten-slot, non-roll elastic tunnel waistband. Spandex thigh and kneepad pocket system set-on with three-step zigzag construction are designed to hold various sized pads firmly in place. Industrial strength rubber band leg opening. Embroidered Swoosh design trademark upper right hip. Hip width: 17.5", Inseam length: 15" (size large). **Custom Logo Available.**

FABRIC: Colors: 86% nylon/14% spandex. White: 86% polyester/14% spandex.

MOD C



MISSOURI GAME JERSEY

See below\*



SIZES: S, M, L, XL, 2XL  
\*15% upcharge for 3XL, 4XL

OFFER DATE: 06/01/06  
END DATE: 06/01/14

Original Nike design. Self-fabric front neck band, 1" heavyweight self-fabric cuffs with elastic, Cordura® knit fabrication panel at upper front and sleeve, warp knit mesh lower front and back. Embroidered Swoosh design trademark at upper left chest and Nike Team Sports jock tag at lower left hem. Name available only with 1" direct embroidery. New name plate and home plate options available. Body width: 17" (size large), Body length: 34.75" (all sizes). **Custom Logo Available.**

**FABRIC:** Colors: Body - 78% nylon/22% spandex. Colors: Mesh - 90% nylon/10% spandex. White: Body - 89% polyester/11% spandex. White: Mesh - 89% polyester/11% spandex.

252856	Blank	\$105.00*
475196	Blank Cap Sleeve	\$105.00*
280403	One-Color Stretch Twill	\$149.00*
280404	Two-Color Stretch Twill	\$159.00*
397647	Three-Color Stretch Twill	\$169.00*
397644	One-Color Lightweight Stretch Twill	\$145.00*
397645	Two-Color Lightweight Stretch Twill	\$155.00*
397646	Three-Color Lightweight Stretch Twill	\$165.00*
442783	Sublimated Lightweight Stretch Twill	\$155.00*

MOD C



126969 | MISSOURI GAME PANT

\$80.00



SIZES: S, M, L, XL, 2XL  
\*15% upcharge for 3XL, 4XL

OFFER DATE: 06/01/06  
END DATE: 06/01/14

Game pant with elastic ten-slot internal waistband and three-piece back construction, contrast colored side insert piece at lower leg, spandex thigh and knee pad pocket system is set-on with three-step zigzag stitching. Spandex knee and thigh pad pockets are designed to hold various size pads firmly in place to prevent shifting. This performance feature was designed by Nike and is currently worn by many Nike promo teams. Hip width: 17.5", Inseam length: 15" (size large). **Custom Logo Available.**

**FABRIC:** Colors: 86% polyester/14% spandex. White: 86% polyester/14% spandex.

MOD C





'CUSE GAME JERSEY

See below\*



SIZES: S, M, L, XL, 2XL  
\*15% upcharge for 3XL, 4XL

OFFER DATE: 06/01/07  
END DATE: 06/01/14

Classic Nike football design with 3" set-on shoulder insert pattern. Nylon mesh at front and back for durability. Nike Team Sports jock tag at lower left hem. New name plate and home plate options available. Body width: 20.75" (size large), Body length: 35" (all sizes). **Custom Logo Available.**  
**FABRIC:** Colors: Body - 86% nylon/14% spandex. Colors: Mesh - 100% nylon. White: Body - 86% polyester/14% spandex. White: Mesh - 100% polyester.

226994	Blank	\$70.00*
475231	Blank Cap Sleeve	\$70.00*
337309	One-Color Screen Print	\$90.00*
337310	Two-Color Screen Print	\$100.00*
280405	One-Color Standard Twill	\$100.00*
280406	Two-Color Standard Twill	\$110.00*
397567	Three-Color Standard Twill	\$120.00*
442782	Sublimated Standard Twill	\$110.00*
442783	Sublimated Lightweight Stretch Twill	\$120.00*

MOD C



226995 'CUSE GAME PANT

\$75.00



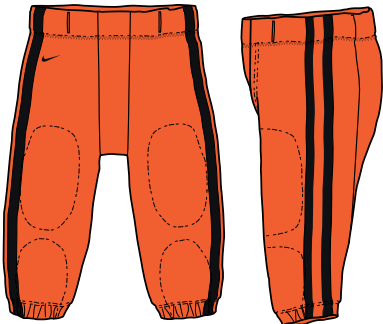
SIZES: S, M, L, XL, 2XL  
\*15% upcharge for 3XL, 4XL

OFFER DATE: 06/01/07  
END DATE: 06/01/14

Flyless game pant with three-piece back and 2.5" non-roll elastic tunnel waistband. Classic 3" set side stripe with multiple color combinations available. Spandex thigh and knee pad pocket system set-on with three-step zigzag construction are designed to hold various sized pads firmly in place to prevent shifting. Industrial strength rubber band leg opening. This performance feature was designed by Nike and is currently worn by many Nike promo teams. Embroidered Swoosh design trademark at upper right hip. Hip width: 17.5", Inseam length: 15" (size large). **Custom Logo Available.**

**FABRIC:** Colors: 86% nylon/14% spandex. White: 86% nylon/14% spandex.

MOD C



## MODIFIED AND TEAM ID UNIFORM OPTIONS



**JERSEY AND PANT COLOR OPTIONS** \*Brown not available on all styles. \*\*Available on Nike Pro Combat Speed Uniform ONLY. Please refer to Uniform Builder for options.



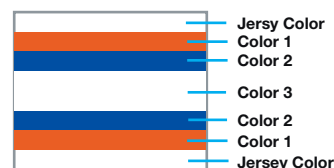
**TWILL AND SCREEN PRINT COLOR OPTIONS** \*Silver not available on all styles. \*\*Available on Nike Pro Combat Speed Uniform ONLY. Please refer to Uniform Builder for options.



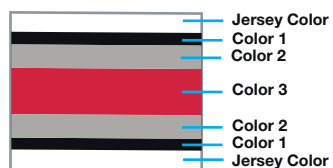
**SUBLIMATED COLOR OPTIONS\*** \*Solid jersey option available only on Vapor Z jersey. \*\*Available on Nike Pro Combat Speed Uniform ONLY.



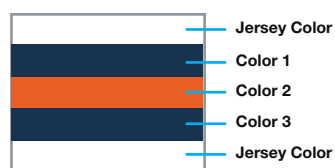
### STRIPE OPTIONS – \$12.00



GRID IRON SLEEVE STRIPE



COLUMBUS SLEEVE STRIPE



OLD SCHOOL SLEEVE STRIPE



SPEED SLEEVE STRIPE

### FONT OPTIONS

**FULL BLOCK LETTERS** - 1 color direct embroidery or 1 or 2 color tackle twill

**A B C D E F G H I J K L M N O P Q R S T U V W X Y Z**

**ATHLETIC SHADOW** - 2 color screen print or 2 color tackle twill

**A B C D E F G H I J K L M N O P Q R S T U V W X Y Z**

**TUSCON BOLD** - 1 or 2 color screen print or tackle twill

**A B C D E F G H I J K L M N O P Q R S T U V W X Y Z**

**BOULDER BOLD** - 3 color tackle twill

**A B C D E F G H I J K L M N O P Q R S T U V W X Y Z**

**DADE BOLD** - 1 or 2 color screen print or tackle twill

**A B C D E F G H I J K L M N O P Q R S T U V W X Y Z**

**GLADES BOLD** - 1 or 2 color screen print or tackle twill

**A B C D E F G H I J K L M N O P Q R S T U V W X Y Z**

**FULL BLOCK** - 1 or 2 color tackle twill

**1 2 3 4 5 6 7 8 9 0**

**ATHLETIC SHADOW BLOCK** - 2 color screen print or 2 color tackle twill

**1 2 3 4 5 6 7 8 9 0**

**TUSCON BOLD** - 1 or 2 color screen print or tackle twill

**1 2 3 4 5 6 7 8 9 0**

**BOULDER BOLD** - 3 color tackle twill

**1 2 3 4 5 6 7 8 9 0**

**DADE BOLD** - 1 or 2 color screen print or tackle twill

**1 2 3 4 5 6 7 8 9 0**

**GLADES BOLD** - 1 or 2 color screen print or tackle twill

**1 2 3 4 5 6 7 8 9 0**

**MORGANTOWN BOLD ITALIC** - 1 or 2 color tackle twill

**1 2 3 4 5 6 7 8 9 0**

**BLACKSBURG** - 1 or 2 color tackle twill

**1 2 3 4 5 6 7 8 9 0**

**GRID IRON BLOCK** - 3 color only

**1 2 3 4 5 6 7 8 9 0**

© Custom Logo Available.

Custom art handling fee \$30.00.

Home Plate – \$5.00.

Name Plate – \$8.00.

Please see Uniform Builder at [Niketeam.com](http://Niketeam.com) or Team representative for order and delivery dates.

BLAZE GAME JERSEY

See below\*

SIZES: S, M, L, XL, 2XL

OFFER DATE: 06/01/12

\*15% upcharge for 3XL, 4XL

END DATE: 06/01/15

Tapered fit, full-length performance football jersey featuring a two-ply high tenacity Cordura® yoke and sleeve, high tenacity upper front chest, four-way stretch mesh on front and back panel. Embroidered Swoosh design trademark at upper left. Body width: 18.5" (size large), Body length: 34.5" (all sizes). Options: +2" and +4" additional length.

FABRIC: Body: Color: 86% nylon/14% spandex. White: 86% polyester/14% spandex.

473576	Blank
475266	Blank Cap Sleeve

NEW

BLAZE GAME PANT

See below\*

SIZES: S, M, L, XL, 2XL

OFFER DATE: 06/01/12

\*15% upcharge for 3XL, 4XL

END DATE: 06/01/15

Game pant featuring a flyless front with three-piece back and 2-1/2" non-roll elastic waistband. Contrasting side inserts. Spandex thigh and kneepad pocket system set on with three-step zig-zag stitch construction designed to hold various sized pads in place. Mesh side panel insert. Elasticized leg opening and embroidered Swoosh design trademark at upper right hip. Hip width: 18.25", Inseam length: 15" (all sizes). Options: +2" and +4" additional length.

FABRIC: Body: Color: 86% nylon/14% spandex. White: 86% polyester/14% spandex.

473577	Blank
476781	Slotted Option

NEW





ELITE ENFORCER JERSEY

See below\*



SIZES: S, M, L, XL, 2XL		OFFER DATE: 06/01/11
*25% upcharge for 3XL, 50% for 4XL		END DATE: 06/01/14
Original Nike design. High-tenacity stretch Cordura® knit fabrication on shoulder for performance fit and durability. Four-way stretch fabric at front and back for breathability. Swoosh design trademark on left front chest and Nike Team Sports jock tag at lower left hem. Name plaque option not available.		
FABRIC: Colors: Upper body/sleeves: 86% nylon/14% spandex. Lower body/mesh: 88% nylon/12% spandex. White: Upper body/sleeves: 86% polyester/14% spandex. Lower body/mesh: 89% polyester/11% spandex.		
349322	Cap Sleeve	
337303	Lineman	

CUSTOM

ELITE ENFORCER PANT

See below\*



SIZES: S, M, L, XL, 2XL		OFFER DATE: 06/01/11
*25% upcharge for 3XL, 50% for 4XL		END DATE: 06/01/14
Pant has three-piece back and 2.5" non-roll elastic waistband. 1.5" custom side braid. Spandex thigh and knee pad pocket system set-on with three-step zigzag stitching. Elastic leg opening. Swoosh design trademark at upper right hip. Options: 2" or 4" additional inseam length. Optional concealed slots.		
FABRIC: White: 91% polyester/9% spandex. Heavyweight colors: 92% nylon/8% spandex.		
360195	Tunnel Waist w/Fly	
360194	10-Slot Waist w/Fly	
360196	Tunnel Waist w/No Fly	
337304	10-Slot Waist w/No Fly	

CUSTOM

CRACK BACK GAME JERSEY

See below\*



SIZES: S, M, L, XL, 2XL		OFFER DATE: 06/01/11
*15% upcharge for 3XL, 4XL		END DATE: 06/01/13
Tapered fit, full-length performance football jersey featuring a two-ply high tenacity Cordura® yoke and sleeve, high tenacity upper front chest, four-way stretch mesh on front and back panel. Contrast side panel insert with piping option and contrast shoulder panel insert. Embroidered Swoosh design trademark at upper left. Body width: 21" (size large), Body length: 34.5" (all sizes). Options: +2" and +4" additional length.		
FABRIC: Body: Color: 86% nylon/14% spandex. White: 100% polyester; 86% polyester/14% spandex.		
424154	Blank	
440636	Blank Cap Sleeve	

CRACK BACK PANT

See below\*



SIZES: S, M, L, XL, 2XL		OFFER DATE: 06/01/11
*15% upcharge for 3XL, 4XL		END DATE: 06/01/13
Game pant featuring a flyless front with three-piece back and 2-1/2" non-roll elastic waistband. Contrasting side inserts. Spandex thigh and kneepad pocket system set on with three-step zigzag stitch construction designed to hold various sized pads in place. Optional 3/16"spandex piping placed on side seam. Elasticized leg opening and embroidered Swoosh design trademark at upper right hip. Hip width: 18.25", Inseam length: 15" (size large). Options: +2" and +4" additional length.		
FABRIC: 86% polyester/14% spandex.		
424155	Blank	
439391	Slotted Option	



## ELITE AND VARSITY CUSTOM UNIFORM OPTIONS



### FABRIC AND COLOR OPTIONS

FABRICS	White	Black	Brown	Navy	Purple	Royal	Lt Blue	Dk Green	Kelly Green	Dk Maroon	Cardinal	Scarlet	Orange	Bright Gold	Vegas Gold	Grey
Cordura																
Stretch mesh																
Pro Brite mesh																
Shimmersheen																
Spandex																

See Uniform Builder or Team representative for order and delivery dates.

### NECK/CUFF TRIM OPTIONS

\*Available pattern for a pant side insert & the Corvallis jersey side insert.

\*\*Available 3/8" braid patterns for the Corvallis jersey & elite tapered pants.



### SLEEVE STRIPE OPTIONS\* \*TV numbers on sleeves are not available in conjunction with sleeves.



### SLEEVE STRIPE DIMENSIONS IN INCHES

323E	1 - 1 - 1	NW	1/2 - 1/2 - 2 - 1/2 - 1/2	IOWA	1/2 - 1/4 - 1/2 - 1/4 - 2 - 1/2 - 1/4 - 1/2 - 1/4
33E	1 - 1 - 1, or center stripe to be fabric	35F	3/4 - 1/4 - 2 - 1/4 - 3/4	535E	1 - 1 - 1 - 1 - 1
23BC	1 - 1 1/2 - 1	A7711	1/8 - 3/4 - 1/8 - 3/4 - 1/8 - 3/4 - 1/8 - 3/4 - 1/8 - 3/4 - 1/8	NWF	1/4 - 1/2 - 1/4 - 1/2 - 1/4 - 2 - 1/4 - 1/2 - 1/4 - 1/2 - 1/4
422	2 - 2	A1411	1/4 - 1 - 1/4 - 3/8 - 1/4 - 1 - 1/4 - 3/8 - 1/4	NW73	1/2 - 1/2 - 1/2 - 1/2 - 2 - 1/2 - 1/2 - 1/2 - 1/2
335E	1/2 - 1/2 - 1/2 - 1/2 - 1/2	GB1410	1 - 1/4 - 1/2 - 1/4 - 1 - 1/4 - 1/2 - 1/4 - 1	2NKNW	1/2 - 1/2 - 1 - 1/2 - 1/2
435E	3/4 - 3/4 - 3/4 - 3/4 - 3/4	3NTS	1/2 - 1 - 1/2 - 1 - 1/2	3NKNW	1/2 - 1/2 - 1 - 1/2 - 1/2

## FONT OPTIONS

PLAIN BLOCK - 1 or 2 color print or tackle twill

ABCDEFGHIJKLMNOPQRSTUVWXYZ

FULL BLOCK - 1 or 2 color print or tackle twill

ABCDEFGHIJKLMNOPQRSTUVWXYZ

FULL BLOCK OUTLINE - 1 or 2 color print only

ABCDEFGHIJKLMNOPQRSTUVWXYZ

GOTHIC BLOCK - 1 or 2 color print or tackle twill

ABCDEFGHIJKLMNOPQRSTUVWXYZ

ATHLETIC GOTHIC SHADOW - 1 or 2 color print or 2 color tackle twill

ABCDEFGHIJKLMNOPQRSTUVWXYZ

ATHLETIC SHADOW - 1 or 2 color print or 2 color tackle twill

ABCDEFGHIJKLMNOPQRSTUVWXYZ

FANCY BLOCK - 1 or 2 color print or tackle twill

ABCDEFGHIJKLMNOPQRSTUVWXYZ

KANSAS BLOCK - 1 or 2 color print or tackle twill

ABCDEFGHIJKLMNOPQRSTUVWXYZ

CAXTON ROMAN BLOCK - 1 or 2 color print or tackle twill

ABCDEFGHIJKLMNOPQRSTUVWXYZ

NIKE TRUE BLOCK - 1 or 2 color print or tackle twill

ABCDEFGHIJKLMNOPQRSTUVWXYZ

BLOCK - 1 or 2 color print or tackle twill (4"/10"/12")

1234567890

MIAMI - 1 or 2 color print only (4"/10"/12")

1234567890

BLOCK WITH OUTLINE - 1 or 2 color print only (4"/10"/12")

1234567890

GOTHIC - 1 or 2 color print or tackle twill (4"/10"/12")

1234567890

ATHLETIC GOTHIC SHADOW - 1 or 2 color print or 2 color tackle twill (4"/10"/12")

1234567890

ATHLETIC SHADOW BLOCK - 1 or 2 color print or 2 color tackle twill (4"/10"/12")

1234567890

PRO BOLD - 1 color print only (4"/10"/12")

1234567890

SYRACUSE - Tackle twill only (4"/10"/12")

1234567890

CAXTON ROMAN - 1 or 2 color print only (4"/10"/12")

1234567890

NIKE TRUE BLOCK - 1 or 2 color print or tackle twill (4"/10"/12")

1234567890



**384406 | LEGEND SLEEVELESS POLY TOP \$22.00\***

**SIZES:** S, M, L, XL, 2XL **OFFER DATE:** 06/01/10  
\*15% upcharge for 3XL, 4XL **END DATE:** 12/01/13

Dri-FIT fabric wicks away sweat to help keep you comfortable and dry. Sleeveless construction is ideal for a variety of training conditions. Neck tape added for durability and comfort. Swoosh design trademark at upper left chest. Body width: 22.75", Body length: 29.25" (size large).

**FABRIC:** Body: 100% polyester.

<b>010</b> Black/(Matte Silver)	<b>260</b> Onyx Heather/Onyx Heather/(Blk)	<b>100</b> White/(Matte Silver)
<b>341</b> Dark Green/(Matte Silver)	<b>419</b> Navy/(Matte Silver)	<b>448</b> Light Blue/(Matte Silver)
<b>493</b> Royal/(Matte Silver)	<b>545</b> Purple/(Matte Silver)	<b>610</b> Cardinal/(Matte Silver)
<b>657</b> Scarlet/(Matte Silver)	<b>669</b> Dark Maroon/(Matte Silver)	<b>727</b> Bright Gold/(Matte Silver)
<b>783</b> Vegas Gold/(Matte Silver)	<b>802</b> Desert Orange/(Matte Silver)	<b>888</b> University Orange/(Matte Silver)

*DRI-FIT*



**384407 | LEGEND S/S POLY TOP \$25.00\***

**SIZES:** S, M, L, XL, 2XL **OFFER DATE:** 06/01/10  
\*15% upcharge for 3XL, 4XL **END DATE:** 12/01/13

Dri-FIT fabric wicks away sweat to help keep you comfortable and dry. Short-sleeve construction is ideal for a variety of training conditions. Neck tape added for durability and comfort. Swoosh design trademark at upper left chest. Body width: 22.75", Body length: 29.25" (size large).

**FABRIC:** Body: 100% polyester.

<b>010</b> Black/(Matte Silver)	<b>260</b> Onyx Heather/Onyx Heather/(Black)	<b>100</b> White/(Matte Silver)
<b>341</b> Dark Green/(Matte Silver)	<b>419</b> Navy/(Matte Silver)	<b>448</b> Light Blue/(Matte Silver)
<b>493</b> Royal/(Matte Silver)	<b>545</b> Purple/(Matte Silver)	<b>610</b> Cardinal/(Matte Silver)
<b>657</b> Scarlet/(Matte Silver)	<b>669</b> Dark Maroon/(Matte Silver)	<b>698</b> Crimson/(Matte Silver)
<b>727</b> Bright Gold/(Matte Silver)	<b>783</b> Vegas Gold/(Matte Silver)	<b>802</b> Desert Orange/(Matte Silver)

**888** University Orange/(Matte Silver)

**Youth #453189 / S-XL / \$22.00 / Body width: 17.75", Body length: 23.5" (size medium)**

*DRI-FIT* **Y**



**384408 | LEGEND L/S POLY TOP \$28.00\***

**SIZES:** S, M, L, XL, 2XL **OFFER DATE:** 06/01/10  
\*15% upcharge for 3XL, 4XL **END DATE:** 12/01/13

Dri-FIT fabric wicks away sweat to help keep you comfortable and dry. Long-sleeve construction is ideal for a variety of training conditions. Neck tape added for durability and comfort. Swoosh design trademark at upper left chest. Body width: 22.75", Body length: 29.25" (size large).

**FABRIC:** Body: 100% polyester.

<b>010</b> Black/(Matte Silver)	<b>260</b> Onyx Heather/Onyx Heather/(Blk)	<b>100</b> White/(Matte Silver)
<b>341</b> Dark Green/(Matte Silver)	<b>419</b> Navy/(Matte Silver)	<b>448</b> Light Blue/(Matte Silver)
<b>493</b> Royal/(Matte Silver)	<b>545</b> Purple/(Matte Silver)	<b>610</b> Cardinal/(Matte Silver)
<b>657</b> Scarlet/(Matte Silver)	<b>669</b> Dark Maroon/(Matte Silver)	<b>698</b> Crimson/(Matte Silver)
<b>727</b> Bright Gold/(Matte Silver)	<b>783</b> Vegas Gold/(Matte Silver)	<b>802</b> Desert Orange/(Matte Silver)

**888** University Orange/(Matte Silver)

*DRI-FIT*



**269602 NIKE PRO - CORE S/L CREW (TIGHT) \$25.00\***

SIZES: S, M, L, XL, 2XL OFFER DATE: 01/01/08  
\*15% upcharge for 3XL END DATE: 12/01/12

Engineered Dri-FIT stretch body fitting first-layer fabric. Dynamic fit and superior technical fabrics provide optimal ventilation and moisture management. Strategically designed seams provide enhanced comfort and performance. Contrast tipping at neck and Nike Pro jock tag at lower left hem. Body width: 17", Body length: 26" (size large).

FABRIC: 84% polyester/16% spandex.

010 Black/(Cool Grey)	021 Carbon Heather/(Black)	100 White/(Cool Grey)
341 Dark Green/(Flint Grey)	419 Navy/(Flint Grey)	493 Royal/(Flint Grey)
545 Purple/(Flint Grey)	610 Cardinal/(Flint Grey)	657 Scarlet/(Cool Grey)
669 Dark Maroon/(Flint Grey)	783 Vegas Gold/(Cool Grey)	

DRI-FIT COMPRESSION

**269603 NIKE PRO - CORE S/S CREW (TIGHT) \$25.00\***

SIZES: S, M, L, XL, 2XL OFFER DATE: 01/01/08  
\*15% upcharge for 3XL END DATE: 12/01/12

Engineered Dri-FIT stretch body fitting first-layer fabric. Dynamic fit and superior technical fabrics provide optimal ventilation and moisture management. Strategically designed seams provide enhanced comfort and performance. Contrast tipping at neck and Nike Pro jock tag at lower left hem. Body width: 17", Body length: 26" (size large).

FABRIC: 84% polyester/16% spandex.

010 Black/(Cool Grey)	021 Carbon Heather/(Black)	100 White/(Cool Grey)
341 Dark Green/(Flint Grey)	419 Navy/(Flint Grey)	493 Royal/(Flint Grey)
545 Purple/(Flint Grey)	610 Cardinal/(Flint Grey)	657 Scarlet/(Cool Grey)
669 Dark Maroon/(Flint Grey)	727 Bright Gold/(Cool Grey)	783 Vegas Gold/(Flint Grey)
810 Orange/(Cool Grey)		

Youth #413911-010, 021, 100, 419, 493, 657 / S-XL / \$20.00 / Body width: 13", Body length: 20" (size medium)

DRI-FIT COMPRESSION Y

**269607 NIKE PRO - CORE L/S CREW (TIGHT) \$35.00\***

SIZES: S, M, L, XL, 2XL OFFER DATE: 01/01/08  
\*15% upcharge for 3XL END DATE: 12/01/12

Engineered Dri-FIT stretch body fitting first-layer fabric. Dynamic fit and superior technical fabrics provide optimal ventilation and moisture management. Strategically designed seams provide enhanced comfort and performance. Contrast tipping at neck and Nike Pro jock tag at lower left hem. Body width: 17", Body length: 26" (size large).

FABRIC: 84% polyester/16% spandex.

010 Black/(Cool Grey)	021 Carbon Heather/(Black)	100 White/(Cool Grey)
341 Dark Green/(Flint Grey)	419 Navy/(Flint Grey)	493 Royal/(Flint Grey)
545 Purple/(Flint Grey)	610 Cardinal/(Flint Grey)	657 Scarlet/(Cool Grey)
669 Dark Maroon/(Flint Grey)	727 Bright Gold/(Cool Grey)	783 Vegas Gold/(Cool Grey)
810 Orange/(Cool Grey)		

Youth #413912-010, 021, 100, 419, 493, 657 / S-XL / \$25.00 / Body width: 13", Body length: 20" (size medium)

DRI-FIT COMPRESSION Y

**405879 NPC HYPERCOOL COMPRESSION 1/2 S/L 2.0 \$45.00\***

SIZES: S, M, L, XL, 2XL OFFER DATE: 06/01/11  
\*15% upcharge for 3XL END DATE: 06/01/13

The Nike Pro Hypercool 1/2 Sleeve Top is designed to help keep you cool during the heat of battle. It has engineered Dri-FIT stretch fabric on the body and flat-back mesh on the back panel and under arms. Bonded open hole mesh pods on the back provide maximum ventilation. Body skimming fit allows for cooling air to flow next to skin. Strategically designed seams provide enhanced comfort for performance. Nike Pro jock tag at lower left hem. Nike Pro read on back neck. Body width: 17", Body length: 26.75" (size large).

FABRIC: 84% polyester/16% spandex.

010 Black/Flint Grey/(Flint Grey)	021 Carbon Heather/Black/(Black)	103 White/Matte Silver/(Black)
419 Navy/Flint Grey/(Flint Grey)	493 Varsity Royal/Black/(Black)	657 Scarlet/Black/(Black)

DRI-FIT COMPRESSION



451656

NPC HYPERCOOL CLAMPDOWN L/S TOP

\$65.00\*

SIZES: S, M, L, XL, 2XL

OFFER DATE: 06/01/12

\*15% upcharge for 3XL

END DATE: 06/01/14

Compression fit for a locked down feel without sacrificing great range of motion and comfort. Mesh insets are strategically bonded in high-heat zones for breathability and ventilation. Jock tag at the front hem for easy product identification. Nike trademark on the inner neck and Nike Pro Combat on the outer back of the neck for a bold look. Contrast-colored flat-seam construction helps reduce irritation caused by chafing. Ergonomic seaming maps the natural contours of the body for reduced areas of irritation. Grip print at lower forearm and bicep for better ball control in wet and cold conditions. Body width: 16", Body length: 27.25" (size large).

FABRIC: 84% polyester/16% spandex jersey.

011 Black/(Flint Grey)	101 White/(Matte Silver)	475 Dark Obsidian/(Flint Grey)
493 Varsity Royal/(Black)	648 Varsity Red/(Black)	



371570

NPC HYPERWARM COMPRESSION MOCK

\$50.00\*

SIZES: S, M, L, XL, 2XL

OFFER DATE: 12/01/11

END DATE: 12/01/13

The Nike Pro Combat Hyperwarm mock is designed to keep you warm, even when it's not. It uses a brushed polyester Dri-FIT technical fabric for maximum warmth and to help keep you dry. Compression fit provides support and helps keep you warm. Mock neck construction and sleeve cuffs help retain heat. Flat seam construction helps reduce chafing, and ergonomic seams were designed for movement. Nike Pro Combat jock tag at front left hem and Dri-FIT trademark heat transfer at front right hem. Embroidered Swoosh design trademark on left neck. Body width: 17.25", Body length: 26.5" (size large).

FABRIC: 88% polyester/12% spandex.

010 Black/(Medium Grey)	064 Flint Grey/(Medium Grey)	100 White/(Medium Grey)
341 Gorge Green/(Medium Grey)	419 College Navy/(Medium Grey)	493 Varsity Royal/(Medium Grey)
545 Court Purple/(Medium Grey)	610 Team Maroon/(Medium Grey)	648 Varsity Red/(Medium Grey)
810 University Orange/(Medium Grey)		

Youth #336474 / XS-XL / \$40.00 / Body width: 13.5", Body length: 20" (size medium)



451655

NPC HYPERSTRONG 4-PAD TOP

\$75.00\*

SIZES: S, M, L, XL, 2XL

OFFER DATE: 06/01/12

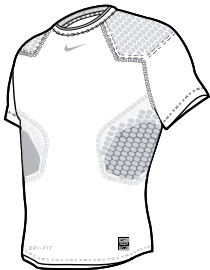
\*15% upcharge for 3XL, 4XL

END DATE: 06/01/13

The Nike Pro Combat four-pad top provides lightweight protection for the football athlete who wants to dominate the competition. It utilizes ergonomically designed deflex floating foam technology in the shoulders and ribs to cushion impact. Superior technical Dri-FIT fabric wicks moisture to help keep you dry. Flat-locked seams were engineered for movement and to reduce chafing. Nike Pro Combat jock tag on lower right hem. Body width: 17", Body length: 25.75" (size large).

FABRIC: Body: 84% polyester/16% spandex. Mesh: 90% polyester/10% spandex.

101 White/(Matte Silver)
--------------------------



451657

NPC HYPERSTRONG CARBON PLATE SHORT

\$175.00\*

SIZES: S, M, L, XL, 2XL

OFFER DATE: 06/01/12

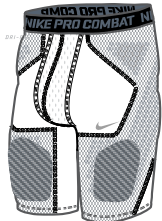
\*15% upcharge for 3XL

END DATE: 06/01/14

Ergonomically designed, 4mm EVA floating-foam technology provides lightweight impact protection on the thighs, hips, and tailbone. Carbon plate allows for additional customized protection on the thighs. Compression fit for support and comfort under athletic uniforms or as a layering piece. Contrast-colored flat-seam construction helps reduce irritation caused by chafing and seam-stacking and offers a pop of color. Jock tag at the center of the back waist for quick and easy product identification. Elastic waistband with a contrast-colored Nike Pro Combat repeat print for a snug, personalized. Hip width: 17.25", Inseam length: 10.25" (size large).

FABRIC: Body: 84% polyester/16% spandex. Gusset: 90% polyester/10% spandex.

100 White/(Matte Silver)
--------------------------





451658

NPC HYPERSTRONG 3/4 PANT

\$110.00\*

SIZES: S, M, L, XL, 2XL

OFFER DATE: 06/01/12

\*15% upcharge for 3XL

END DATE: 06/01/13

Dominate the competition in the Nike Pro Combat men's football pant. With flexible foam padding and durable thigh plates designed to integrate seamlessly into your uniform, you can compete longer and harder while reducing overall weight and bulk. Dri-FIT fabric to wick sweat away and help keep you dry and comfortable. Durable stretch-tape waist for support and comfort. Ergonomic seams with flat-seam construction to maximize mobility and to reduce chafing. Dual-density foam padding at thighs and single-density foam padding at hips and tailbone for superior impact protection. Additional padding. Hip width: 15.75", Inseam length: 15.25" (size large). **FABRIC:** Body: 84% polyester/16% spandex. Pad overlay: 70% polyester/30% spandex.

100 White/(Matte Silver)

NEW DRI-FIT

411019

NPC HYPERSTONG FOOTBALL SHORT

\$80.00\*

SIZES: S, M, L, XL, 2XL

OFFER DATE: 06/01/11

\*15% upcharge for 3XL

END DATE: 06/01/13

Dominate the competition in the Nike Pro Combat Football Short. With flexible foam padding and durable thigh plates designed to integrate seamlessly into your uniform, you can compete longer and harder while reducing overall weight and bulk. Dri-FIT fabric to wick sweat away and help keep you dry and comfortable. Durable stretch-tape waist for support and comfort. Ergonomic seams with flat-seam construction to maximize mobility and to reduce chafing. Dual-density foam padding at thighs and single-density foam padding at hips and tailbone for superior impact protection. Hip width: 17", Inseam length: 9.25" (size large). **FABRIC:** Body: Dri-FIT 170 g. 84% polyester/16% spandex. Pads: Ethylene vinyl acetate foam. Pad overlay: 158 g. 70% polyester/30% spandex.

100 White/Black/(Cool Grey)

DRI-FIT COMPRESSION

401934

NPC HYPERSTONG HIP AND TAIL FOOTBALL SHORT

\$50.00

SIZES: S, M, L, XL, 2XL

OFFER DATE: 06/01/11

END DATE: 06/01/13

Dominate the competition in the Nike Pro Combat Hip and Tail Football Short. With flexible foam padding you can compete longer and harder while reducing overall weight and bulk. Dri-FIT fabric to wick sweat away and help keep you dry and comfortable. Durable stretch-tape waist for support and comfort. Ergonomic seams with flat-seam construction to maximize mobility and to reduce chafing. Single-density foam padding at hips and tailbone for superior impact protection. Hip width: 16.25", Inseam length: 9.5" (size large) fits like 10.75" with gusset. **FABRIC:** Body: Dri-FIT 170 g. 84% polyester/16% spandex. Pads: Ethylene vinyl acetate foam. Pad overlay: 158 g. 70% polyester/30% spandex.

101 White/Black/(Cool Grey)

DRI-FIT COMPRESSION

424188

NPC HYPERSTRONG JOCK

\$40.00\*

SIZES: S, M, L, XL, 2XL

OFFER DATE: 06/01/12

\*15% upcharge for 3XL

END DATE: 06/01/14

Ergonomically designed, 10mm EVA floating-foam technology provides lightweight impact protection on the thighs, hips, and tailbone. Compression fit for support and comfort under athletic uniforms or as a layering piece. Contrast-colored flat-seam construction helps reduce irritation caused by chafing and seam-stacking and offers a pop of color. Jock tag at the center of the back waist for quick and easy product identification. Elastic waistband with a contrast-colored Nike Pro Combat repeat print for a snug, personalized fit and an authentic look. **FABRIC:** Body: 84% polyester/16% spandex. Pad overlay: 70% polyester/30% spandex.

100 White/Neutral Grey/(Cool Grey)

NEW DRI-FIT

267371

NIKE PRO - CORE 5-PAD POCKET GIRDLE

\$30.00\*

SIZES: S, M, L, XL, 2XL

OFFER DATE: 06/01/08

\*15% upcharge for 3XL

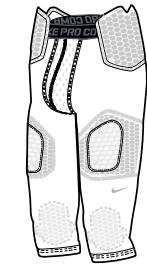
END DATE: 06/01/12

Dri-FIT fabric stretch tight girdle with five-pad pockets that fit a wide range of pads. Flat-seam construction and Nike Pro performance waistband. Hip width: 15.5", Inseam length: 9.25" (size large). **FABRIC:** 82% polyester/18% spandex.

010 Black/(White)

100 White/(Black)

DRI-FIT COMPRESSION



**453352 | MEN'S DUGOUT JACKET \$85.00\***

**SIZES:** S, M, L, XL, 2XL **OFFER DATE:** 12/01/11  
\*15% upcharge for 3XL **END DATE:** 12/01/14

Full-zip fleece-lined jacket. Two front pockets. Water resistant outer shell. V-shaped contrast design detail on front. Bungee cord bottom hem. Embroidered Swoosh design trademark on front right chest. Body width: 24.5", Body length: 29.75" (size large).

**FABRIC:** 100% polyester.

<b>010</b> Black/(White)	<b>060</b> Anthracite/(White)	<b>419</b> Navy/(White)
<b>493</b> Royal/(White)	<b>657</b> Scarlet/(White)	



**453353 | MEN'S STOCK STAFF ACE PULLOVER \$70.00\***

**SIZES:** S, M, L, XL, 2XL **OFFER DATE:** 12/01/11  
\*15% upcharge for 3XL, 4XL **END DATE:** 12/01/14

Lightweight v-neck pullover. Polyester two-way stretch fabric. Strategically placed overlay for added range of motion. Single knit mesh underarm gusset for breathability. Drawcord around bottom hem for player comfort. Embroidered Swoosh design trademark on front right chest. Body width: 24.75", Body length: 30" (size large).

**FABRIC:** Body: 100% polyester. Insets: 95% polyester/5% spandex.

<b>010</b> Black/(White)	<b>060</b> Anthracite/(White)	<b>341</b> Dark Green/(White)
<b>419</b> Navy/(White)	<b>493</b> Royal/(White)	<b>610</b> Cardinal/(White)
<b>657</b> Scarlet/(White)	<b>669</b> Dark Maroon/(White)	

*DRI-FIT*



**359725 | WHEELHOUSE L/S JACKET \$65.00\***

**SIZES:** S, M, L, XL, 2XL **OFFER DATE:** 12/01/09  
\*15% upcharge for 3XL **END DATE:** 12/01/12

Clima-FIT fabric long-sleeve jacket with front pockets, bottom toggles for adjustability and mesh ventilation under arms for breathability. Quarter-zip pullover with Swoosh design trademark at upper right chest. Body width: 25.75", Body length: 31" (size large).

**FABRIC:** 100% polyester.

<b>250</b> Flint Grey/Black/(White)	<b>251</b> Flint Grey/Dark Green/(White)	<b>252</b> Flint Grey/Navy/(White)
<b>253</b> Flint Grey/Royal/(White)	<b>254</b> Flint Grey/Purple/(White)	<b>255</b> Flint Grey/Cardinal/(White)
<b>256</b> Flint Grey/Scarlet/(White)		



**359724 | WHEELHOUSE S/S JACKET \$55.00\***

**SIZES:** S, M, L, XL, 2XL **OFFER DATE:** 12/01/09  
\*15% upcharge for 3XL **END DATE:** 12/01/12

Clima-FIT fabric short-sleeve jacket with front pockets, bottom toggles for adjustability and mesh ventilation under arms for breathability. Quarter-zip pull-over with Swoosh design trademark at upper right chest. Body width: 25.75", Body length: 31" (size large).

**FABRIC:** 100% polyester.

<b>230</b> Black/Flint Grey/(White)	<b>231</b> Dark Green/Flint Grey/(White)	<b>232</b> Navy/Flint Grey/(White)
<b>233</b> Royal/Flint Grey/(White)	<b>234</b> Purple/Flint Grey/(White)	<b>236</b> Scarlet/Flint Grey/(White)
<b>237</b> Cardinal/Flint Grey/(White)		



453354

MEN'S THERMA-FIT KO CREW

\$55.00\*

SIZES: XS, S, M, L, XL, 2XL

OFFER DATE: 12/01/11

\*15% upcharge for 3XL

END DATE: 12/01/14

Performance fleece pull-over with trim at neck, sleeve and hem. Unique armhole design and rib side panels. Embroidered Swoosh design trademark on center front chest. Body width: 25.25", Body length: 28.75" (size large).

FABRIC: 100% polyester.

010 Black/(White)	057 Grey/(Black)	341 Dark Green/(White)
419 Navy/(White)	493 Royal/(White)	610 Cardinal/(White)
657 Scarlet/(White)	669 Dark Maroon/(White)	

Therma-FIT



337294

TEAM TECH FLEECE HOODY

\$60.00\*

SIZES: S, M, L, XL, 2XL

OFFER DATE: 06/01/09

\*15% upcharge for 3XL, 4XL

END DATE: 06/01/13

Performance fleece hoody with rib trim at sleeve and hem. Unique armhole design and rib side panels. Embroidered Swoosh design trademark located centrally on pouch. Body width: 28.75", Body length: 28.375" (size large).

FABRIC: Body: 9.5 oz. Therma-FIT 100% polyester. Rib: 98% polyester/2% spandex.

010 Black/(White)	057 Grey/(Black)	341 Dark Green/(White)
419 Navy/(White)	493 Royal/(White)	610 Cardinal/(White)
657 Scarlet/(White)	669 Dark Maroon/(White)	

Therma-FIT



378255

TECH FLEECE PANT

\$50.00\*

SIZES: S, M, L, XL, 2XL

OFFER DATE: 06/01/10

\*15% upcharge for 3XL, 4XL

END DATE: 06/01/13

Performance fleece pant with side seam pockets and exposed elastic waist with drawcord for adjustable fit. The open hem features an elasticized drawcord to adjust the fit. Swoosh design trademark at left hip. Hip width: 23.25" (size large), Inseam length: 32.75" (all sizes).

FABRIC: Body: 100% polyester.

010 Black/(White)	057 Grey/(Black)	341 Dark Green/(White)
419 Navy/(White)	493 Royal/(White)	610 Cardinal/(White)
657 Scarlet/(White)	670 Dark Maroon/(White)	

Therma-FIT





**453188** | **MEN'S NIKE ZOOM RUNNING JACKET** **\$70.00\***

**SIZES:** XS, S, M, L, XL, 2XL **OFFER DATE:** 12/01/11  
\*15% upcharge for 3XL **END DATE:** 12/01/14

Wind and water resistant full-zip jacket with Dri-FIT properties. Front zipper has a protective chin guard. Front zipped pockets for secure storage and venting. Elastic binding at sleeve hem and adjustable elastic drawcord at bottom hem allow for a custom fit. Mesh lined back vent helps to regulate your temperature during a run. Reflective heat transfers on upper arms allow for added visibility. Reflective Swoosh design trademark on upper right chest. Body width: 23.5", Body length: 29.5" (size large).

**FABRIC:** 100% polyester.

<b>010</b> Black/(Reflective Silver)	<b>060</b> Anthracite/(Reflective Silver)	<b>341</b> Dark Green/(Reflective Silver)
<b>419</b> Navy/(Reflective Silver)	<b>657</b> Scarlet/(Reflective Silver)	



**337299** | **MEN'S 1/4-ZIP HOOD JACKET** **\$55.00\***

**SIZES:** XS, S, M, L, XL, 2XL **OFFER DATE:** 06/01/09  
\*15% upcharge for 3XL, 4XL **END DATE:** 06/01/13

Quarter-zip unlined woven pull-over jacket with hood. Zippered pockets. Drop-tail for extra coverage and a vented back. Embroidered Swoosh design trademark at upper right chest. Easy access back vent with hook and loop tape closure for ease of screen print. Body width: 27", Body length: 34.25" (size large).

**FABRIC:** 100% polyester.

<b>010</b> Black/(White)	<b>341</b> Dark Green/(White)	<b>419</b> Navy/(White)
<b>448</b> Light Blue/(White)	<b>493</b> Royal/(White)	<b>545</b> Purple/(White)
<b>610</b> Cardinal/(White)	<b>657</b> Scarlet/(White)	<b>669</b> Dark Maroon/(White)
<b>820</b> Orange/(White)		



**476243** | **MEN'S AMBASSADOR JACKET** **\$125.00\***

**SIZES:** S, M, L, XL, 2XL **OFFER DATE:** 06/01/12  
\*15% upcharge for 3XL, 4XL **END DATE:** 06/01/15

Full-zip woven jacket. Poly fleece lining to keep the body warm during cooler temperatures. Built-in stow away hood around neck collar. Internal bottom hem elasticized drawcord. Embroidered Swoosh design trademark at upper right chest. Body width: 23.5", Body length: 27.75" (size large).

**FABRIC:** 100% polyester.

<b>010</b> Black/(White)	<b>060</b> Anthracite/(White)	<b>341</b> Dark Green/(White)
<b>419</b> Navy/(White)	<b>493</b> Royal/(White)	<b>545</b> Purple/(White)
<b>610</b> Cardinal/(White)	<b>657</b> Scarlet/(White)	<b>669</b> Dark Maroon/(White)

**NEW**



**378246** | **SUBZERO FILLED JACKET** **\$150.00\***

**SIZES:** XS, S, M, L, XL, 2XL **OFFER DATE:** 06/01/10  
\*15% upcharge for 3XL, 4XL **END DATE:** 06/01/13

Be prepared for the elements. The new Subzero filled jacket is designed with cold weather in mind. Storm-FIT 1, full-zip jacket is filled; fleece lined and has an internal pocket for easy post-embroidery and storage. Jacket comes with two front pockets, adjustability at sleeve and hem, as well as removable hood. Music enabled/media pocket. Swoosh design trademark at upper right chest. Body width: 26.5", Body length: 32.5" (size large).

**FABRIC:** Body: 100% recycled polyester. Fill: 150g 100% polyester.

<b>010</b> Black/(Flint Grey)	<b>060</b> Anthracite/(Flint Grey)	<b>419</b> Navy/(Flint Grey)
<b>493</b> Royal/(Flint Grey)	<b>657</b> Scarlet/(Flint Grey)	

STORM-FIT



361056

MEN'S TEAM FLY SHORT

\$25.00\*

SIZES: S, M, L, XL, 2XL  
\*15% upcharge for 3XL, 4XL

OFFER DATE: 12/01/09  
END DATE: 06/01/13

Dri-FIT circular knit body fabric. Brushed waistband with drawcord. Inside waistband will be Anthracite for ALL colorways. Swoosh design trademark at lower left hem. Hip width: 24.5", Inseam length: 10" (size large).

FABRIC: 100% polyester.

010 Black/(Matte Silver)	060 Anthracite/(Matte Silver)	341 Dark Green/(Matte Silver)
419 Navy/(Matte Silver)	448 Light Blue/(Matte Silver)	493 Royal/(Matte Silver)
545 Purple/(Matte Silver)	610 Cardinal/(Matte Silver)	657 Scarlet/(Matte Silver)
669 Dark Maroon/(Matte Silver)	716 Bright Gold/(Matte Silver)	783 Vegas Gold/(Matte Silver)
820 Orange/(Matte Silver)		

Youth #361058 / S-XL / \$22.00 / Hip width: 20", Inseam length: 8" (size medium)

DRI-FIT 

418635

MEN'S 3 POCKET FLY SHORT

\$35.00\*

SIZES: S, M, L, XL, 2XL  
\*15% upcharge for 3XL, 4XL

OFFER DATE: 06/01/11  
END DATE: 06/01/14

Dri-FIT circular knit body fabric. Brushed waistband with drawcord. Swoosh design trademark at lower left hem. Hip width: 25.75", Inseam length: 9.25" (size large).

FABRIC: 100% polyester.

010 Black/(White)	060 Anthracite/(White)	341 Dark Green/(White)
419 Navy/(White)	493 Royal/(White)	610 Cardinal/(White)
657 Scarlet/(White)	669 Dark Maroon/(White)	

DRI-FIT

476281

GUNG-HO POLO

\$35.00\*

SIZES: S, M, L, XL, 2XL  
\*15% upcharge for 3XL, 4XL

OFFER DATE: 06/01/12  
END DATE: 06/01/15

Double knit piqué fabric short-sleeve polo with self-fabric collar. Contrast piping detail at shoulder seam and collar. 3 button front placket. Suggested placement for embroidered team logo at left chest. Embroidered Swoosh design trademark at upper right chest. Body width: 23.5", Body length: 31" (size large).

FABRIC: 100% polyester.

012 Black/White/(White)	106 White/Black/(Black)	212 Anthracite/White/(White)
342 Dark Green/White/(White)	420 Navy/White/(White)	453 Light Blue/White/(White)
494 Royal/White/(White)	546 Purple/White/(White)	612 Cardinal/White/(White)
658 Scarlet/White/(White)	670 Dark Maroon/White/(White)	784 Vegas Gold/White/(Black)
821 Orange/White/(Orange)		

NEW DRI-FIT

418636

RECKONING II POLO

\$50.00\*

SIZES: S, M, L, XL, 2XL  
\*15% upcharge for 3XL, 4XL

OFFER DATE: 06/01/11  
END DATE: 06/01/14

Performance fundamental polo for all of your team needs. Relaxed cut polo is constructed with lightweight Dri-FIT to ensure you stay cool, comfortable and dry. Expanded color palette allows any team to match school colors. Swoosh design trademark on front right chest. Body width: 23.5", Body length: 30.25" (size large).

FABRIC: 100% polyester.

009 Silver/(Black)	010 Black/(White)	100 White/(Black)
341 Dark Green/(White)	419 Navy/(White)	448 Light Blue/(White)
493 Royal/(White)	545 Purple/(White)	610 Cardinal/(White)
657 Scarlet/(White)	669 Dark Maroon/(White)	783 Vegas Gold/(Black)
820 Orange/(White)		

DRI-FIT



267850

L/S MOCK

\$45.00\*

SIZES: S, M, L, XL, 2XL

OFFER DATE: 06/01/08

\*15% upcharge for 3XL, 4XL

END DATE: 06/01/13

Dri-FIT fabric long-sleeve mock with self-fabric collar. Open-hole mesh fabrication under arm provides optimal ventilation. Swoosh design trademark embroidered at left collar. Body width: 23.5", Body length: 31" (size large).

FABRIC: 100% polyester.

010 Black/(White)	100 White/(Black)	341 Dark Green/(White)
419 Navy/(White)	493 Royal/(White)	610 Cardinal/(White)
657 Scarlet/(White)		

DRI-FIT

125383

S/S MOCK

\$38.00\*

SIZES: S, M, L, XL, 2XL

OFFER DATE: 06/01/05

\*15% upcharge for 3XL

END DATE: 06/01/13

Dri-FIT microfiber mesh with rib knit collar. Swoosh design trademark embroidered at left collar. Body width: 23.5", Body length: 29" (size large).

FABRIC: 100% polyester.

010 Black/(White)	100 White/(Black)	221 Chino/(Black)
341 Dark Green/(White)	419 Navy/(White)	493 Royal/(White)
545 Purple/(White)	610 Cardinal/(White)	657 Scarlet/(White)

DRI-FIT

267853

COACHES VEST

\$50.00\*

SIZES: S, M, L, XL, 2XL

OFFER DATE: 06/01/08

\*15% upcharge for 3XL

END DATE: 06/01/13

Technical and comfortable double-knit Dri-FIT fabric coaches vest. Rib knit neck, lower hem and arm. Swoosh design trademark at upper right chest. Body width: 23", Body length: 28.25" (size large).

FABRIC: 100% polyester.

010 Black/(White)	100 White/(Black)	221 Chino/(White)
341 Dark Green/(White)	419 Navy/(White)	493 Royal/(White)
545 Purple/(White)	610 Cardinal/(White)	657 Scarlet/(White)

DRI-FIT

267858

COACHES PERFORMANCE PANT

\$70.00

SIZES: 30, 32, 34, 36, 38, 40, 42, 44, 46, 48, 50, 52, 54

OFFER DATE: 06/01/08

END DATE: 06/01/13

Coaches pant with lightweight stretch fabrication. Flat front, front pockets, two set back pockets with tonal Swoosh design trademark located at upper right back pocket. Hip width: 22.75" (size 36), Inseam length: 36" unhemmed (all sizes).

FABRIC: Body: 92% polyester/8% spandex.

010 Black	221 Chino
-----------	-----------







**500068 | NIKE VAPOR TALON ELITE LOW \$140.00**

SIZES: 8-15, 16 OFFER DATE: 4/1

The game's fastest cleat. Designed for the game's fastest players looking for elite signature performance.

**UPPER:** Low-cut hyperfuse construction provides zoned support and breathability in an ultra-light, ultra-strong package.

**MIDSOLE:** Dual-density sockliner for ideal blend of comfort and responsiveness.

**OUTSOLE:** Injected Pebax outsole. Forefoot traction on demand system for pinpoint cuts. Carbon fiber insert for mid-foot support.

010 Black/Chrome-White	100 White/Black
410 Navy/Chrome-White	610 Game Red/Chrome-White

NEW



**442245 | ALPHA SPEED D \$95.00**

SIZES: 6-15, 16 OFFER DATE: 4/1

Designed with the true hybrid player in mind, the Nike Alpha Speed is a perfect balance between crafted fit and versatile, lightweight performance.

**UPPER:** 3/4-height with performance synthetic leather. Durable cast urethane design throughout collar to protect and go the distance.

**MIDSOLE:** EVA sockliner with Poron® forefoot for enhanced fit.

**OUTSOLE:** TPU 7-stud plate for lightweight control.

001 Black/White-Black	002 Black/Tornado
141 White/Midnight Navy	161 White/Game Red

NEW



**511342 | NIKE VAPOR PRO LOW D \$95.00**

SIZES: 6-15, 16 OFFER DATE: 4/1

Vapor design and engineering. Built for speed and pro level performance.

**UPPER:** Upper with no sew and engineered mesh for superior lightweight feel, support and breathability.

**MIDSOLE:** Molded PU foam sockliner with forefoot Poron insert for comfort.

**OUTSOLE:** 7-stud speed outsole for a lighter, faster, control system.

010 Black/Metallic Silver-White	100 White/Black-Black
144 White/Midnight Navy-Midnight Navy	166 White/Game Red-Game Red

NEW



**442244 | ALPHA SPEED TD \$90.00**

SIZES: 6-15, 16 OFFER DATE: 4/1

Designed with the true hybrid player in mind, the Nike Alpha Speed is a perfect balance between crafted fit and versatile, lightweight performance.

**UPPER:** 3/4-height with performance synthetic leather. Durable cast urethane design throughout collar to protect and go the distance.

**MIDSOLE:** Molded TPU plate for lightweight control.

**OUTSOLE:** EVA sockliner with Poron® forefoot for enhanced fit.

001 Black/White-White	002 Black/Tornado
141 White/Midnight Navy	161 White/Game Red

NEW



IMAGE NOT AVAILABLE

**511328 | NIKE LUNAR SUPER BAD PRO D \$90.00**

SIZES: 6-16, 17, 18 OFFER DATE: 4/1

The perfect blend of quickness and power in a bold and aggressive design.

**UPPER:** Lightweight synthetic leather upper with integrated fit sleeve for proprioceptive fit and lockdown.

**MIDSOLE:** Dual-density midsole with zoned Lunarlon foam for zoned cushion and response.

**OUTSOLE:** 7-stud detach Pebax plate with secondary shark teeth for better grab on all field types.

001 Black/White-Black	009 Black/Tornado-Metallic Silver
110 White/White-Black	

NEW



**511340 | NIKE VAPOR PRO LOW TD \$90.00**

SIZES: 6-15, 16 OFFER DATE: 4/1

Vapor design and engineering. Built for speed and pro level performance.

**UPPER:** Upper with no sew and engineered mesh for superior lightweight feel, support and breathability.

**MIDSOLE:** Molded PU foam sockliner with forefoot Poron insert for comfort.

**OUTSOLE:** Molded speed outsole for a lighter, traction control system. Sidewall shovel cleats enable quicker, stronger edge movements.

010 Black/Metallic Silver-White	100 White/Black-Black
144 White/Midnight Navy-Midnight Navy	166 White/Game Red-Game Red

NEW



IMAGE NOT AVAILABLE

511334 | NIKE LUNAR SUPER BAD PRO TD \$85.00

SIZES: 6-14, 15, 16 OFFER DATE: 4/1  
The perfect blend of quickness and power in a bold and aggressive design.  
UPPER: Lightweight synthetic leather upper with integrated fit sleeve for proprioceptive fit and lockdown.  
MIDSOLE: Dual-density midsole with zoned Lunarlon foam for zoned cushion and response.  
OUTSOLE: Molded TPU outsole with perimeter traction elements for superior grab.

001 Black/White-Black	019 Black/Tornado-White
100 White/White-Black	

NEW



487873 | NIKE LUNAR EDGE 13 \$85.00

SIZES: 6-13, 14, 15, 16, 17, 18 OFFER DATE: C/O  
A superior training shoe for the athlete who spends more time on endurance training. Equally adept at the weight room and ability drills.  
UPPER: Synthetic leather or breathable mesh upper for lightweight, breathability and stability. Dual pull midfoot system for lockdown support.  
MIDSOLE: Lunarlon cushioning system provides a dynamic and responsive ride for longer runs or agility drills.  
OUTSOLE: Solid rubber with modified delta nodes for increased cushioning and traction on multiple surfaces.

001 Black/Dark Grey-White	
---------------------------	--



511292 | NIKE LAND SHARK 3/4 \$48.00

SIZES: 6.5-14, 15, 16 OFFER DATE: 4/1  
Celebrating 30 years in the game. From entry-level to high school the Nike Land Shark is proven and tested.  
UPPER: Synthetic materials combine to create a great fit to enhance this classic model.  
MIDSOLE: Full-length Phylon midsole for enhanced support.  
OUTSOLE: Rubber shark outsole with proven and tested traction elements.

010 Black/White	
-----------------	--

NEW



414821 | NIKE AIR ELITE PRE-GAME \$75.00

SIZES: 8-15, 16, 17, 18, 19 OFFER DATE: C/O  
The ultimate baseball trainer for pre-game, post game and everything in between.  
UPPER: Lightweight synthetic leather and mesh upper provides great performance fit and excellent breathability.  
MIDSOLE: Phylon midsole with full-length encapsulated Air-Sole unit and heel crash pad provide a cushioned ride. Injected shank for midfoot strength arch support.  
OUTSOLE: Solid rubber outsole with hybrid traction pattern and lateral outrigger for traction and lateral stability. Toe bumper provides durability toe-drag.

101 White/Black	011 Black/White
-----------------	-----------------

NEW



511296 | NIKE LAND SHARK 3/4 (BG) \$42.00

SIZES: 10c-13c, 1y-6y OFFER DATE: 4/1  
Celebrating 30 years in the game. From entry-level to high school the Nike Land Shark is proven and tested.  
UPPER: Synthetic materials combine to create a great fit to enhance this classic model.  
MIDSOLE: Full-length Phylon midsole for enhanced support.  
OUTSOLE: Rubber shark outsole with proven and tested traction elements.

010 Black/White	
-----------------	--

NEW



AIR PEGASUS+ 29 \$100.00

SIZES: 6-13, 14, 15, 16, 17, 18 OFFER DATE: 6/1  
The cushioning and ride that neutral runners expect from this classic Nike running franchise; with an even better fit. 11.2 oz (Men's size 10).  
UPPER: A breathable mesh upper that features strategically placed no-sew overlays, a Nike Flywire construction midfoot panel and notched inner sleeve for comfort and support.  
MIDSOLE: Full-length Cushlon foam works with a Nike Zoom unit in the heel for soft, responsive cushioning and great forefoot flexibility.  
OUTSOLE: BRS 1000 carbon rubber heel with an environmentally preferred rubber, Waffle outsole throughout for durable traction. Flex grooves for a smooth ride.

001 Black/Black-Summit White	100 Summit White/Black-Neutral Grey
103 Summit White/Black-Deep Forest	104 Summit White/Black-Varsity Royal
106 Summit White/Black-Varsity Crimson	108 Summit White/Black-Safety Orange
116 Summit White/Black-Varsity Red	140 Summit White/Black-Midnight Navy
160 Summit White/Black-Maroon	161 Summit White/Black-University Blue

180 Summit White/Black-Desert Orange	
--------------------------------------	--

001 Black/Black-Summit White (Wide)	
-------------------------------------	--

001 Black/Black-Summit White (4E) SIZES 16, 17, 18 not available in 4E	
--	--

100 Summit White/Black-Neutral Grey (Wide)	
--	--

100 Summit White/Black-Neutral Grey (4E) SIZES 16, 17, 18 not available in 4E	
---	--

NEW





**FT0210 | VAPOR ELITE AIRLOCK \$70.00**

SIZES: 9 OFFER DATE: C/O

Premium leather football with revolutionary Airlock technology • Airlock technology / Industry-best air-retention bladder maintains an exact air pressure day after day, and it is fully adjustable • Premium pro-level waterproof leather / Exceptional feel and grip for accurate throws and precise spirals • Three-ply lining / Superior shape retention • Small girth pattern / Easier to handle • Engraved NFHS logo / Approved for high school play

DIMENSIONS: Official

201 Brown/College Half-Stripe/(Black-Platinum)



**FT0214 | VAPOR FLIGHT AIRLOCK \$35.00**

SIZES: 9 OFFER DATE: C/O

Versatile composite-leather football with revolutionary Airlock technology • Durable soft-touch composite-leather / Excellent grip on every release and every run • Airlock technology / Industry-best air-retention bladder maintains an exact air pressure day after day, and it is fully adjustable • High-tack laces / Performance grip lacing with a textured surface for added control on every release • Small girth pattern / Easier to handle • Engraved NFHS logo / Approved for high school play

DIMENSIONS: Official

201 Brown/College Half-Stripe/(Black-Platinum)



**FT0211 | VAPOR ELITE AIRLOCK COMPOSITE \$45.00**

SIZES: 9 OFFER DATE: C/O

Premium composite-leather football with revolutionary Airlock technology • High-end composite-leather / Exceptional feel, grip and all-weather durability • Airlock technology / Industry-best air-retention bladder maintains an exact air pressure day after day, and it is fully adjustable • High-tack laces / Performance grip lacing with a textured surface for added control on every release • Small girth pattern / Easier to handle • Engraved NFHS logo / Approved for high school play

DIMENSIONS: Official

201 Brown/College Half-Stripe/(Black-Platinum)



**BA3233 | BRASILIA 5 MEDIUM DUFFEL/GRIP \$35.00**

SIZES: MISC OFFER DATE: 6/1

Tough 600D polyester • Durable 300D polyester • Detachable shoulder strap • Ventilated shoe or wet/dry storage • Secure zip pocket • Limited lifetime guarantee • Screened Swoosh design trademark

DIMENSIONS: 25.75" L x 12" W x 12" H / 3660 cu. in.

067 Black/Black/(White)	082 Flint Grey/Black/(White)
301 Team Green/Black/(White)	463 Varsity Royal/Black/(White)
472 Midnight Navy/Black/(White)	633 Perfect Pink/Black/(White)
638 Team Red/Black/(White)	682 Varsity Red/Black/(White)
804 College Orange/Black/(White)	



**BA3183 | CASCADE MESSENGER \$45.00**

SIZES: MISC OFFER DATE: C/O

054 Black/Black/(Silver)





**GF0087 NIKE HYPERBEAST \$60.00**

**SIZES:** M, L, XL, XXL, XXXL **OFFER DATE:** C/O

Massive-impact full-coverage Lineman's glove • Hydragrip all-weather palm / Alternative grip built for consistent performance across wet and dry conditions • Revolutionary compression-molded palm padding / Zero-seam construction brings durable protection with integrated palm pads • Zoned back-of-hand padding / Full-coverage padding wraps the hand in flexible thick pads made to move fast and hit hard • Dual-strap lock-down / Evolved two-strap system lets you tighten the wrist and the palm separately, for a custom fit • Pre-curved fingers / Pre-curved design helps reduce bunding on the palm, increasing grip area on all surfaces • Articulated Thumb / Enhances fit for a secure feel and added dexterity • Jock tag / Write in your number or name to customize the wrist cuff • NFHS/NCAA approved

001 Black/Grey/(White)	003 Black/Red/(White)
004 Black/Royal/(White)	

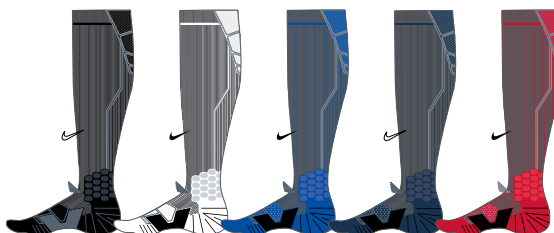


**GF0095 SUPERBAD 2.0 \$50.00**

**SIZES:** S, M, L, XL, XXL **OFFER DATE:** 4/1

High-impact versatile speed glove with Supergrip technology • Supergrip Technology / Nike's best grip ever, made for all conditions and engineered with a stretchy fit for added comfort • Compression-Molded Padding / Integrated, contoured padding over the knuckles and back-of-hand • Pre-curved fingers / Pre-curved design helps reduce bunching on the palm, increasing grip surface area on the ball • Dual-Tension Strap / The molded strap tensions the cuff and palm for a lock-down fit with less bunching • Versatile Wear Options / Lock down the strap or flip up the cuff • Articulated Thumb / Enhances fit for a secure feel and added dexterity • Jock Tag / Write in your number or name to customize the wrist cuff • NFHS/NCAA approved

001 Black/Cool Grey/(Chrome)	101 White/Black/Cool Grey/(Chrome)
301 Gorge Green/Black/Cool Grey/(Chrome)	401 Game Royal/Black/Cool Grey/(Chrome)
402 College Navy/Black/Cool Grey/(Chrome)	501 Court Purple/Black/Cool Grey/(Chrome)
601 University Red/Black/Cool Grey/(Chrome)	602 Deep Maroon/Black/Cool Grey/(Chrome)
603 Pink/Black/Cool Grey/(Chrome)	801 Team Orange/Black/Cool Grey/(Chrome)



**ELITE FOOTBALL KNEE HIGH \$20.00**

**SIZES:** MISC **OFFER DATE:** 7/1

**SHOE SIZE:** M 12-15 (XL sock size); M 8-12 (L sock size)

SX4601-001	Black/Black/(White)	X-LARGE (M12-15)	\$20.00
SX4601-101	White/Black/(Black)	X-LARGE (M12-15)	\$20.00
SX4601-401	Game Royal/Black/(Black)	X-LARGE (M12-15)	\$20.00
SX4601-410	College Navy/Black/(Black)	X-LARGE (M12-15)	\$20.00
SX4601-650	University Red/Black/(Black)	X-LARGE (M12-15)	\$20.00
SX4600-001	Black/Black/(White)	LARGE (M8-12)	\$20.00
SX4600-101	White/Black/(Black)	LARGE (M8-12)	\$20.00
SX4600-401	Game Royal/Black/(Black)	LARGE (M8-12)	\$20.00
SX4600-410	College Navy/Black/(Black)	LARGE (M8-12)	\$20.00
SX4600-650	University Red/Black/(Black)	LARGE (M8-12)	\$20.00



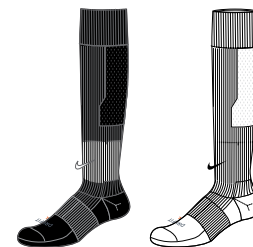
**GF0093 VAPOR JET 2.0 \$45.00**

**SIZES:** S, M, L, XL, XXL **OFFER DATE:** 4/1

Tough and Lightweight skill-player's glove • Magnigrip CL palm / Graphic palms with all-weather grip performance and durability • Ventilated Mesh Panel / Encourages airflow across back-of-hand for Lightweight breathability • Dual-Tension Strap / The molded strap tensions the cuff and palm for a lock-down fit with less bunching • Articulated Thumb / Enhances fit for a secure feel and added dexterity • Versatile Wear Options / Lock down the strap or flip up the cuff • Jock Tag / Write in your number or name to customize the wrist cuff • NFHS/NCAA approved

001 Black/Black/White/(White)	101 White/Silver/White/(White)
301 Gorge Green/Black/White/(White)	401 Game Royal/Black/White/(White)
402 College Navy/Black/White/(White)	501 Court Purple/Black/White/(White)
601 University Red/Black/White/(White)	602 Deep Maroon/Black/White/(White)
603 Pink/Black/White/(White)	801 Team Orange/Black/White/(White)

Youth #GF0094 / 001, 101, 401, 601 / \$30.00



**2PPK NIKE PRO COMPRESSION FOOTBALL \$16.00**

**SIZES:** MISC **OFFER DATE:** C/O

Dri-FIT fabric / Wicks away moisture to keep feet dry and cool • Arch support / Snug, secure fit • Reinforced heel and toe • Reflective pattern / Enhanced visibility **SHOE SIZE:** M 12-15 (XL sock size); M 8-12 (L sock size); M 6-8, W 6-10 (M sock size)

SX3762-001	Black/(White)	X-LARGE (M12-15)	\$16.00
SX3762-101	White/(Black)	X-LARGE (M12-15)	\$16.00
SX3763-001	Black/(White)	LARGE (M8-12)	\$16.00
SX3763-101	White/(Black)	LARGE (M8-12)	\$16.00
SX4357-001	Black/(White)	MEDIUM (M6-8, W6-10)	\$16.00
SX4357-101	White/(Black)	MEDIUM (M6-8, W6-10)	\$16.00



**ELITE FOOTBALL CREW \$16.00**

**SIZES:** MISC **OFFER DATE:** 7/1

**SHOE SIZE:** M 12-15 (XL sock size); M 8-12 (L sock size)

SX4599-001	Black/Black/(White)	X-LARGE (M12-15)	\$16.00
SX4599-101	White/Black/(Black)	X-LARGE (M12-15)	\$16.00
SX4599-401	Game Royal/Black/(Black)	X-LARGE (M12-15)	\$16.00
SX4599-410	College Navy/Black/(Black)	X-LARGE (M12-15)	\$16.00
SX4599-650	University Red/Black/(Black)	X-LARGE (M12-15)	\$16.00
SX4598-001	Black/Black/(White)	LARGE (M8-12)	\$16.00
SX4598-101	White/Black/(Black)	LARGE (M8-12)	\$16.00
SX4598-401	Game Royal/Black/(Black)	LARGE (M8-12)	\$16.00
SX4598-410	College Navy/Black/(Black)	LARGE (M8-12)	\$16.00
SX4598-650	University Red/Black/(Black)	LARGE (M8-12)	\$16.00





Printed on recycled paper containing  
30% post consumer waste.



09/11 20K GAC - FALL 2012 TEAM FOOTBALL FLYER  
© Nike, Inc. 2011. All rights reserved.  
Price: Suggested Retail

Team Customer Service: 1-877-235-6453  
Fax: (503) 532-6708  
Customer Affairs: 1-800-344-6453