



WOMEN'S SOCCER

SPRING 2016



ALEX MORGAN IN THE USA
AWAY KIT WITH COOLING
TECHNOLOGY

FOR A LOOK INSPIRED BY THIS
JERSEY CHECK OUT THE DQT GAME
JERSEY 16 ON PAGE 12



SPRING 2016

STOCK APPAREL	3
CUSTOM APPAREL	10
DIGITAL APPAREL	12
GOALKEEPERS	16
PERFORMANCE SOCKS	17
SOCCER TRAINING	18

LASER PR III JERSEY LASER WOVEN PR SHORT

**LIGHTWEIGHT PERFORMANCE
THAT'S DECEPTIVELY POWERFUL**

LASER-PERF VENTILATION SYSTEM
CONTROLS TEMPERATURE.

LIGHTWEIGHT DRI-FIT FABRIC
FOR ZERO DISTRACTIONS.

DISTINCTIVE DIGITAL FADE GRAPHIC
ON SLEEVES AND SHORTS.



100 480 616 657 702
wht/blk(blk) gm ryl/blk(blk) vvd pnk/blk(blk) unv red/blk(blk) vit/blk(blk)

725955 / **SS LASER PR III JERSEY** / \$60
725978 / **YOUTH SS LASER PR III JERSEY** / \$55

Dri-FIT knit short-sleeve jersey with forwarded shoulder seam. Hybrid crew neck collar. Laser cut holes on both shoulders and on both sides of body. Gradient printed sleeves. Mesh back and side panels. Embroidered Swoosh design trademark. Woven authentic Nike Team jock tag. Body width: 18.5", body length: 26.75" (size medium). Youth body width: 16.75", youth body length: 22.75" (size medium).

FIRST OFFER DATE: 1-1-2016 ADULT SIZES: S, M, L, XL YOUTH SIZES: XS, S, M, L, XL
END DATE: 12-31-2017 FABRIC: 100% POLYESTER



100 480 616 657 702
wht/blk(wht) gm ryl/blk(gm ryl) vvd pnk/blk(vvd pnk) unv red/blk(unv red) vit/blk(vit)

800269 / **LASER WOVEN PR SHORT** / \$40
800267 / **YOUTH LASER WOVEN PR SHORT** / \$35

Dri-FIT woven short without brief. Gradient graphic all around bottom of short. Global soccer fit. Mesh side insert panel with concealed side vent. Mesh back yoke. Embroidered Swoosh design trademark. Hip width: 20.5" (size medium), inseam length: 6.5" (all sizes). Youth hip width: 16.5", youth inseam length: 6.5" (size medium).

FIRST OFFER DATE: 1-1-2016 ADULT SIZES: S, M, L, XL YOUTH SIZES: XS, S, M, L, XL
END DATE: 12-31-2017 FABRIC: 100% POLYESTER



010 015 013 012 014
blk(wht) blk(ryl) blk(vvd pnk) blk(unv red) blk(vit)

394386 / **CLASSIC II SOCK (UNISEX)** / \$12

Game day sock with fold-over cuff, articulated foot specific footbed for superior fit and contrast Swoosh design trademark at ankle. Sold in prepacks of 3.

FIRST OFFER DATE: 1-1-2016 ADULT SIZES: XS, S, M, L, XL YOUTH SIZES: XS, S, M, L, XL
END DATE: 12-31-2018 FABRIC: 100% 93% NYLON/6% POLYESTER/1% SPANDEX.





010 blk/ftbl wht/(ftbl wht) 156 ftbl wht/ftbl wht/(blk) 419 clg nvy/ftbl wht/(ftbl wht) 493 gm ryl/ftbl wht/(ftbl wht) 657 unv red/ftbl wht/(ftbl wht)

645508 / **SS UNITE JERSEY** / \$55
 645923 / **YOUTH SS UNITE JERSEY** / \$50

Dri-FIT knit short-sleeve jersey with rib crew collar. Laser cut holes placement on shoulders. Cut and sew panels on sleeves and chest. Mesh back panel. Embroidered Swoosh design trademark. Woven authentic Nike Team Sports jock tag. Body width: 18.5", body length: 26.75" (size medium). Youth body width: 16.75", body length: 22.75" (size medium).

FIRST OFFER DATE: 1-1-2015 ADULT SIZES: S, M, L, XL
 END DATE: 12-31-2016 YOUTH SIZES: XS, S, M, L, XL
 FABRIC: 100% POLYESTER



010 blk/ftbl wht/(ftbl wht) 156 ftbl wht/ftbl wht/(blk) 419 clg nvy/ftbl wht/(ftbl wht) 493 gm ryl/ftbl wht/(ftbl wht) 657 unv red/ftbl wht/(ftbl wht) 715 vlt/blk/(blk)

645511 / **MAX GRAPHIC SHORT NB** / \$40
 645925 / **YOUTH MAX GRAPHIC SHORT NB** / \$35

Short without brief. Gradient heat embossed graphic on front and back. Solid side insert panel with side vent. Hip width: 20.5" (size medium), inseam length: 6.5" (all sizes). Youth hip width: 16.75", youth inseam length: 7" (size medium).

FIRST OFFER DATE: 1-1-2015 ADULT SIZES: S, M, L, XL
 END DATE: 12-31-2017 YOUTH SIZES: XS, S, M, L, XL
 FABRIC: 100% POLYESTER



010 blk/wht/(wht) 011 blk/unv red/(wht) 104 wht/unv blu/(blk) 303 pn gm/gym gm/(wht) 419 clg nvy/gm ryl/(wht) 480 gm ryl/wht/(wht)

820702 / **SS STRIPED DIVISION II** / \$40
 820701 / **YOUTH SS STRIPED DIVISION II** / \$35

Dri-FIT knit short-sleeve jersey with rib v-collar. Graphic front panel - traditional stripes in gradient execution. Mesh back panel. Embroidered Swoosh design trademark. Woven authentic Nike Team jock tag. Body width: 18.5", body length: 26.75" (size medium). Youth body width: 16.75", youth body length: 22.75" (size medium).

NEW
 FIRST OFFER DATE: 1-1-2016 ADULT SIZES: S, M, L, XL
 END DATE: 12-31-2018 YOUTH SIZES: XS, S, M, L, XL
 FABRIC: 100% POLYESTER

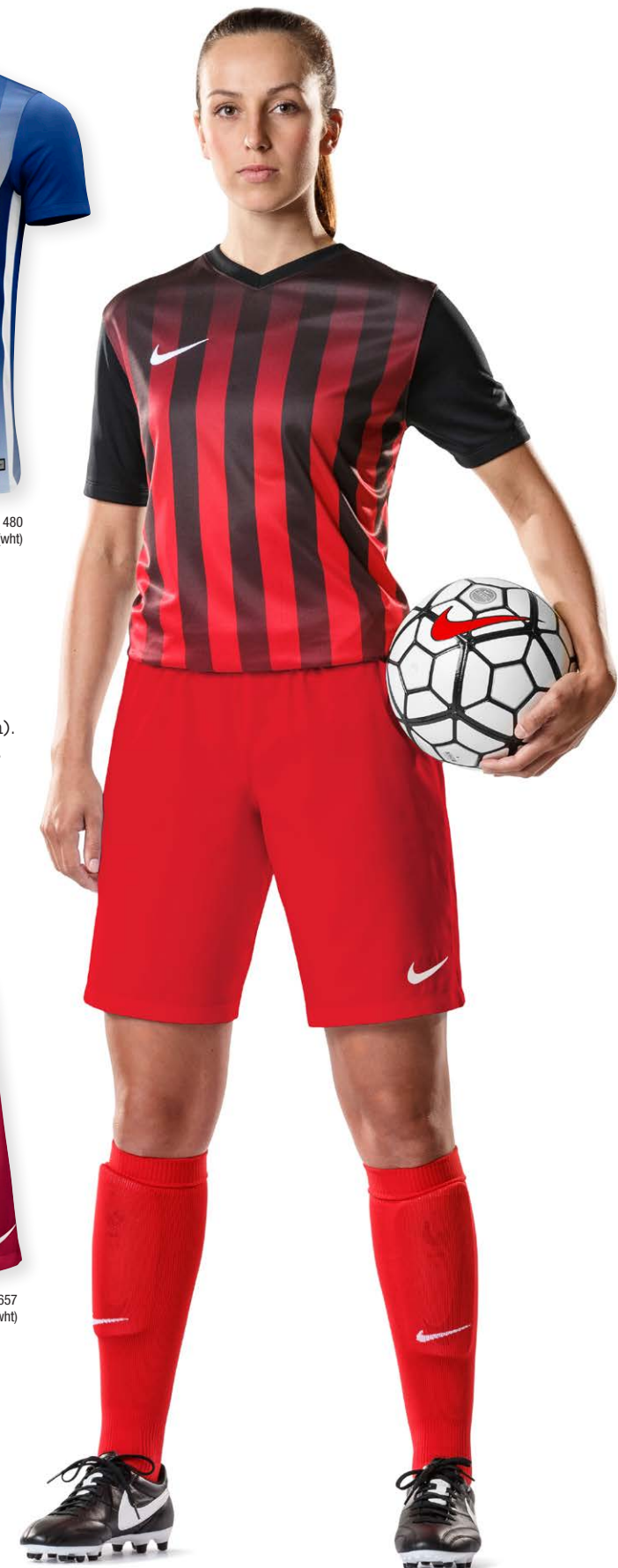


010 blk/(wht) 100 wht/(blk) 419 clg nvy/(wht) 480 gm ryl/(wht) 657 unv red/(wht)

725952 / **LASER WOVEN III SHORT** / \$30
 725980 / **YOUTH LASER WOVEN III SHORT** / \$27.50

Dri-FIT woven short without brief (except white). Global soccer fit. Conceded side vent for improved mobility. Embroidered Swoosh design trademark. Hip width: 20.5" (size medium), inseam length: 6.5" (all sizes). Youth hip width: 16.5" (size medium), youth inseam length: 6.5" (all sizes).

NEW
 FIRST OFFER DATE: 1-1-2016 ADULT SIZES: S, M, L, XL
 END DATE: 12-31-2018 YOUTH SIZES: XS, S, M, L, XL
 FABRIC: 100% POLYESTER





010 blk/wht/wht 101 wht/wht/blk 341 grg grn/wht/wht 419 clg nvy/wht/wht 493 gm ryl/wht/wht 657 unv red/wht/wht 731 unv gld/wht/wht

620883 / **TROPHY JERSEY** / \$45
 620886 / **YOUTH TROPHY JERSEY** / \$40

Short-sleeve jersey with rib v-neck with overlay at center front. Set in sleeves. 3.5cm cut and sew stripe at lower and upper sleeve. Mesh back panel. Elasticated back neck tape. Embroidered Swoosh design trademark on right chest. Woven label on lower left hem. Dri-FIT logo on lower right hem. Body width: 18.5", body length: 26.75" (size medium). Youth body width: 16.75", youth body length: 22.75" (size medium).

FIRST OFFER DATE: 1-1-2015 ADULT SIZES: S, M, L, XL
 END DATE: 12-31-2016 YOUTH SIZES: XS, S, M, L, XL
 FABRIC: 100% POLYESTER



010 blk/wht/wht 156 wht/wht/blk 419 clg nvy/wht/wht 448 vir blu/wht/wht 493 gm ryl/wht/wht 657 unv red/wht/wht 692 tm mnn/wht/wht 715 vlt/blk/blk 891 tm org/wht/wht

645506 / **CHALLENGE JERSEY** / \$35
 645921 / **YOUTH CHALLENGE JERSEY** / \$30

Dri-FIT knit short-sleeve jersey with hybrid v-neck collar. Contrast mesh fabric shoulder and side panels. Mesh back panel. Embroidered Swoosh design trademark. Woven authentic Nike Team Sports jock tag. Body width: 18.5", body length: 26.75" (size medium). Youth body width: 16.75", youth body length: 22.75" (size medium).

FIRST OFFER DATE: 1-1-2015 ADULT SIZES: S, M, L, XL
 END DATE: 12-31-2017 YOUTH SIZES: XS, S, M, L, XL
 FABRIC: 100% POLYESTER



010 blk/wht/wht 100 wht/wht/blk 341 grn/wht/wht 419 nvy/wht/wht 448 vir blu/wht/wht 480 ryl/wht/wht 657 unv red/wht/wht 692 mnn/wht/wht 702 vlt/blk/blk 739 unv gld/wht/wht 891 org/wht/wht

725950 / **SS STRIKER IV JERSEY** / \$30
 725981 / **YOUTH SS STRIKER IV JERSEY** / \$25

Dri-FIT knit short-sleeve jersey with rib v-collar. 1 piece sleeve and shoulder panel. Sleeve cuffs. Mesh back panel. Embroidered Swoosh design trademark. Woven authentic Nike Team jock tag. Body width: 17.25", body length: 26.75" (size medium). Youth body width: 16.75", youth body length: 22.75" (size medium).

NEW
 FIRST OFFER DATE: 1-1-2016 ADULT SIZES: S, M, L, XL
 END DATE: 12-31-2018 YOUTH SIZES: XS, S, M, L, XL
 FABRIC: 100% POLYESTER



010 blk/wht/wht 100 wht/wht/blk 419 clg nvy/wht/wht 480 gm ryl/wht/wht 657 unv red/wht/wht

725956 / **LEAGUE KNIT SHORT** / \$27.50
 725983 / **YOUTH LEAGUE KNIT SHORT** / \$25

Dri-FIT knit short without brief. Global soccer fit. Contrast cut & sew side panel. Embroidered Swoosh design trademark. Hip width: 20.5" (size medium), inseam length: 6.5" (all sizes). Youth hip width: 17.5", youth inseam length: 5.25" (size medium).

NEW
 FIRST OFFER DATE: 1-1-2016 ADULT SIZES: S, M, L, XL
 END DATE: 12-31-2018 YOUTH SIZES: XS, S, M, L, XL
 FABRIC: 100% POLYESTER





010 blk/wht(wht) 101 wht/wht(blk) 341 grg grn/wht(wht) 419 clg nvy/wht(wht) 448 vlr blu/wht(wht) 493 gm ryl/wht(wht) 610 tm mrr/wht(wht) 657 unv red/wht(wht) 739 unv gld/wht(wht) 820 tm org/wht(wht)

620880 / **PARK DERBY JERSEY** / \$30
 620877 / **YOUTH PARK DERBY JERSEY** / \$25

Short-sleeve jersey with rib v-neck with cross over at center front. Cut and sew front and back panel. Set in sleeves. Elasticated back neck tape. Embroidered Swoosh design trademark on right chest. Woven label on lower left hem. Dri-FIT logo on lower right hem. Body width: 18.5", body length: 26.75" (size medium). Youth body width: 16.75", youth body length: 22.75" (size medium).

FIRST OFFER DATE: 1-1-2015 ADULT SIZES: S, M, L, XL
 END DATE: 12-31-2017 YOUTH SIZES: XS, S, M, L, XL
 FABRIC: 100% POLYESTER



010 blk(wht) 093 pwtr(wht) 156 wht(blk) 341 dk grn(wht) 419 nvy(wht) 448 lt blu(wht) 493 ryl(wht) 504 prpl(wht) 651 pnk fr(wht) 657 scrbl(wht) 739 unv gld(wht) 891 org(wht)

645507 / **SS TIEMPO II JERSEY** / \$20
 646399 / **YOUTH SS TIEMPO II JERSEY** / \$19

Dri-FIT knit short-sleeve jersey with self fabric crew collar. No under arm seam for better movement. Mesh side panels for maximum ventilation. Embroidered Swoosh design trademark. Woven authentic Nike Team Sports jock tag. Body width: 18.5", body length: 26.75" (size medium). Youth body width: 16.75", youth body length: 22.75" (size medium).

FIRST OFFER DATE: 1-1-2015 ADULT SIZES: S, M, L, XL, 2XL
 END DATE: 12-31-2018 YOUTH SIZES: XS, S, M, L, XL
 FABRIC: 100% POLYESTER

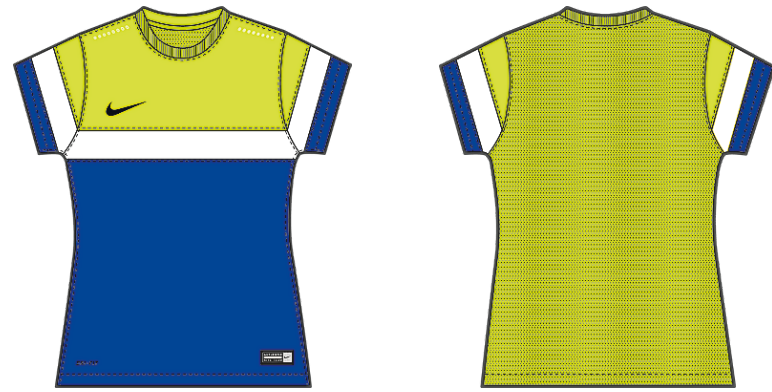


012 blk/wht(wht) 100 wht/wht(blk) 341 grg grn/wht(wht) 420 nvy/wht(wht) 448 vlr blu/wht(wht) 494 ryl/wht(wht) 610 tm mrr/wht(wht) 658 scrbl/wht(wht) 888 unv org/wht(wht)

456271 / **HERTHA KNIT SHORT** / \$25
 456466 / **YOUTH HERTHA KNIT SHORT** / \$20

4cm wide fold over elasticated waistband, 12cm wide mesh gusset, 4cm deep mesh panel 2cm wide self fabric contrast cut & sew. Embroidered Swoosh design trademark, embroidered Dri-FIT logo. Hip width: 21.75", inseam length: 4" (size medium). Youth hip width: 19.25", youth inseam length: 4" (size medium).

FIRST OFFER DATE: 1-1-2012 ADULT SIZES: S, M, L, XL
 END DATE: 12-31-2016 YOUTH SIZES: XS, S, M, L, XL
 FABRIC: 100% POLYESTER



652784 / **SS UNITE MOD JERSEY** / \$60
 652782 / **YOUTH SS UNITE MOD JERSEY** / \$55

Dri-FIT knit short-sleeve jersey with rib crew collar. Laser cut holes placement on shoulders. Cut and sew panels on sleeves and chest. Mesh back panel. Embroidered Swoosh design trademark. Woven authentic Nike Team Sports jock tag. Modified capabilities. Body width: 18.5", body length: 26.25" (size medium). Youth body width: 16.75", youth body length: 22.75" (size medium).

FIRST OFFER DATE: 1-1-2014 ADULT SIZES: S, M, L, XL, 2XL
 END DATE: 12-31-2016 YOUTH SIZES: XS, S, M, L, XL
 FABRIC: 100% POLYESTER



588476 / **SS TROPHY II MOD JERSEY** / \$50
 588386 / **YOUTH SS TROPHY II MOD JERSEY** / \$45

Short-sleeve jersey with rib v-neck with overlay at center front. Set in sleeves. 13/8" cut and sew tripe at lower and upper sleeve. Mesh back panel. Elasticized back neck tape. Embroidered Swoosh design trademark on right chest. Woven label on lower left hem. Dri-FIT logo on lower right hem. Body width: 18.5", body length: 26.75" (size medium). Youth body width: 16.75", youth body length: 22.75" (size medium).

FIRST OFFER DATE: 1-1-2014 ADULT SIZES: S, M, L, XL, 2XL
 END DATE: 12-31-2016 YOUTH SIZES: XS, S, M, L, XL
 FABRIC: BODY: 90% POLYESTER/8% SPANDEX. INSETS: 95% POLYESTER/5% SPANDEX.



725953 / **LEAGUE KNIT MOD SHORT** / \$30
 725982 / **YOUTH LEAGUE KNIT MOD SHORT** / \$27.50

Dri-FIT knit short without brief. Global soccer fit. Contrast cut & sew side panel. Embroidered Swoosh design trademark. Hip width: 20.5" (size medium), inseam length: 6.5" (all sizes). Youth hip width: 17.5", youth inseam length: 5.25" (size medium).

NEW
 FIRST OFFER DATE: 1-1-2016 ADULT SIZES: S, M, L, XL, 2XL
 END DATE: 12-31-2018 YOUTH SIZES: XS, S, M, L, XL
 FABRIC: 100% POLYESTER



588478 / **SS PARK DERBY MOD JERSEY** / \$35
 588388 / **YOUTH SS PARK DERBY MOD JERSEY** / \$30

Short-sleeve jersey with rib v-neck with cross over at center front. Cut and sew front and back panel. Set in sleeves. Elasticized back neck tape. Embroidered Swoosh design trademark on right chest. Woven label on lower left hem. Dri-FIT logo on lower right hem. Body width: 18.5", body length: 26.75" (size medium). Youth body width: 16.75", youth body length: 22.75" (size medium).

FIRST OFFER DATE: 1-1-2014 ADULT SIZES: S, M, L, XL, 2XL
 END DATE: 12-31-2017 YOUTH SIZES: XS, S, M, L, XL
 FABRIC: 100% POLYESTER



728988 / **DQT SS GAME JERSEY 16** / \$80
 728960 / **YOUTH DQT SS GAME JERSEY 16** / \$75

Designed for the elite level athlete, fully sublimated short-sleeve game jersey delivers the ultimate in soccer uniforms. Dri-FIT flat back mesh provided for a high performance jersey. Fully customized with the ability for a unique team name or logo placed at the upper left front or center front, depending on the design chosen. Numbering variations also available. Back name placement options are also available. Body width: 18.5", body length: 26.75" (size medium). Youth body width: 16.75", youth body length: 22.75" (size medium).

NEW
 FIRST OFFER DATE: 1-1-2016 ADULT SIZES: S, M, L, XL, 2XL
 END DATE: 12-31-2018 YOUTH SIZES: S, M, L, XL
 FABRIC: 100% POLYESTER



599538 / **DQT SS GAME JERSEY 14** / \$80
 599526 / **YOUTH DQT SS GAME JERSEY 14** / \$75

Designed for the elite level athlete, fully sublimated short-sleeve game jersey delivers the ultimate in soccer uniforms. Dri-FIT flat back mesh provided for a high performance jersey. Fully customized with the ability for a unique team name or logo placed at the upper left front or center front, depending on the design chosen. Numbering variations also available. Back name placement options are also available. Exclusive order form required. Body width: 18.5", body length: 26.75" (size medium). Youth body width: 16.75", youth body length: 22.75" (size medium).

FIRST OFFER DATE: 1-1-2014 ADULT SIZES: S, M, L, XL, 2XL
 END DATE: 12-31-2016 YOUTH SIZES: S, M, L, XL
 FABRIC: 100% POLYESTER FLAT BACK MESH



599550 / **TEAM ID SS GAME JERSEY 14** / \$50
 599546 / **YOUTH TEAM ID SS GAME JERSEY 14** / \$45

Designed for the elite level athlete, fully sublimated short-sleeve game jersey delivers the ultimate in soccer uniforms. Dri-FIT flat back mesh provided for a high performance jersey. Fully customized with the ability for a unique team name or logo placed at the upper left front or center front, depending on the design chosen. Numbering variations also available. Back name placement options are also available. Body width: 18.5", body length: 26.75" (size medium). Youth body width: 16.75", youth body length: 22.75" (size medium). Exclusive order form required.

FIRST OFFER DATE: 1-1-2014 ADULT SIZES: S, M, L, XL, 2XL
 END DATE: 12-31-2016 YOUTH SIZES: S, M, L, XL
 FABRIC: 100% POLYESTER FLAT BACK MESH





728994 / **SS DIGITAL GAME JERSEY 16** / \$50
 728971 / **YOUTH SS DIGITAL GAME JERSEY 16** / \$45

Designed for the elite level athlete, fully sublimated short-sleeve game jersey delivers the ultimate in soccer uniforms. Dri-FIT flat back mesh provided for a high performance jersey. Fully customized with the ability for a unique team name or logo placed at the upper left front or center front, depending on the design chosen. Numbering variations also available. Back name placement options are also available. Body width: 18.5", body length: 26.75" (size medium). Youth body width: 16.75", youth body length: 22.75" (size medium).

NEW
 FIRST OFFER DATE: 1-1-2016 ADULT SIZES: S, M, L, XL, 2XL
 END DATE: 12-31-2018 YOUTH SIZES: S, M, L, XL
 FABRIC: 100% POLYESTER



729261 / **DIGITAL EQUALISER SHORT** / \$45
 728979 / **YOUTH DIGITAL EQUALISER SHORT** / \$40

New fully sublimated game short delivers the ultimate in men's soccer uniforms. Dri-FIT flat-back mesh provides for a high performance game short. The ability to color block to your teams/clubs needs, as well as the addition of numbers all printed into the short for the best/lightest game ready short available. #3 Swoosh design trademark at left leg. Number placements available at right leg. Hip width: 20.5" (size medium), inseam length: 6.5" (all sizes). Youth hip width: 17.5", youth inseam length: 5.25" (size medium).

NEW
 FIRST OFFER DATE: 1-1-2016 ADULT SIZES: S, M, L, XL
 END DATE: 12-31-2018 YOUTH SIZES: XS, S, M, L, XL
 FABRIC: 100% POLYESTER



728997 / **DQT EQUALISER SHORT** / \$60
 728985 / **YOUTH DQT EQUALISER SHORT** / \$55

New fully sublimated game short delivers the ultimate in men's soccer uniforms. Dri-FIT flat-back mesh provides for a high performance game short. The ability to color block to your teams/clubs needs, as well as the addition of numbers all printed into the short for the best/lightest game ready short available. #3 Swoosh design trademark at left leg. Number placements available at right leg. Hip width: 20.5" (size medium), inseam length: 6.5" (all sizes). Youth hip width: 17.5", youth inseam length: 5.25" (size medium).

NEW
 FIRST OFFER DATE: 1-1-2016 ADULT SIZES: S, M, L, XL, 2XL
 END DATE: 12-31-2018 YOUTH SIZES: XS, S, M, L, XL
 FABRIC: 100% POLYESTER



428812 / **DQT SOCCER GAME SHORT** / \$60
 599531 / **YOUTH DQT SOCCER GAME SHORT** / \$55

3-5 week delivery upon artwork approval. New digitally printed and fully sublimated game short delivers the ultimate in women's soccer uniforms. Dri-FIT flat-back mesh provides for a high performance game short. Fully customized jersey with the ability to color block to your teams/clubs needs, as well as the addition of your custom logo or numbers all printed into the short for the best/lightest game ready short available. #3 Swoosh design trademark at left leg. Hip width: 21.75", inseam length: 4" (size medium). Youth hip width: 19.25", youth inseam length: 4" (size medium). Exclusive order form required.

FIRST OFFER DATE: 1-1-2013 ADULT SIZES: XS, S, M, L, XL
 END DATE: 12-31-2016 YOUTH SIZES: XS, S, M, L, XL
 FABRIC: 100% POLYESTER

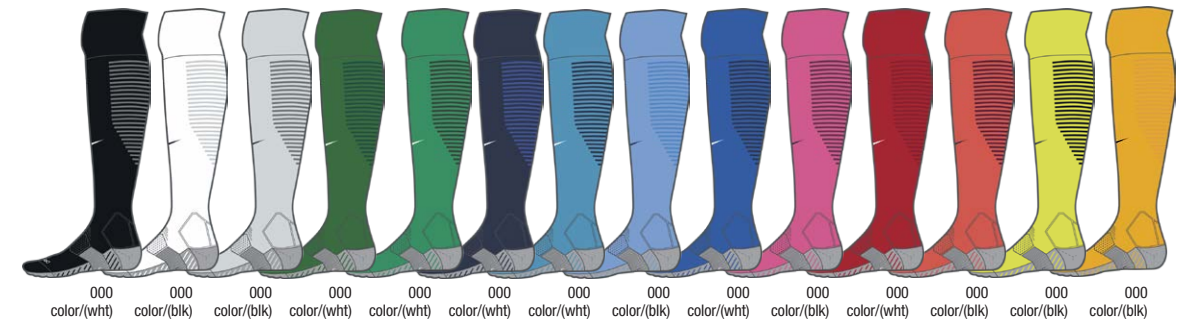


001 mtt slvr/(blk) 010 blk/(wht) 303 elctrc grn/(blk) 657 unv red/(wht)

588509 / **LS PARK GOALIE II JERSEY** / \$50
 588441 / **YOUTH LS PARK GOALIE II JERSEY** / \$45

Long-sleeve rib crew neck goalkeeper jersey. Raglan sleeves and rib sleeve cuffs. Protective elbow padding. Elasticated back neck tape. Embroidered Swoosh design trademark on right chest. Woven label on lower left hem. Dri-FIT logo on lower right hem. Body width: 18.5", body length: 26.75" (size medium). Youth body width: 16.75", youth body length: 24" (size medium).

FIRST OFFER DATE: 1-1-2016 ADULT SIZES: S, M, L, XL
 END DATE: 1-1-2019 YOUTH SIZES: XS, S, M, L, XL
 FABRIC: 100% POLYESTER



800265 / **TEAM MATCHFIT CORE OTC SOCK** / \$20

Lorem ipsum dolor sit amet, consectetur adipiscing elit, sed do eiusmod tempor incididunt ut labore et dolore magna aliqua. Ut enim ad minim veniam, quis nostrud exercitation ullamco laboris nisi ut aliquip.

NEW
 FIRST OFFER DATE: 1-1-2016 ADULT SIZES: S, M, L, XL
 END DATE: 1-1-2019 FABRIC: 100% POLYESTER



822892 / **VAPOR III SOCK** / \$15

Knee length Dri-FIT knitted sock with performance footbed. Elite mark on calve. Contrast stripe graphic on side. Toe and achilles cushioning. Anatomical left and right.

NEW
 FIRST OFFER DATE: 1-1-2016 ADULT SIZES: XS, S, M, L, XL
 END DATE: 1-1-2019 FABRIC: 88% NYLON/9% POLYESTER/3% SPANDEX.



394386 / **CLASSIC II SOCK (UNISEX)** / \$12

Game day sock with fold-over cuff, articulated foot specific footbed for superior fit and contrast Swoosh design trademark at ankle. Sold in prepacks of 3.

FIRST OFFER DATE: 1-1-2016 ADULT SIZES: XS, S, M, L, XL
 END DATE: 12-31-2018 FABRIC: 100% 93% NYLON/6% POLYESTER/1% SPANDEX.



010 blk/(wht) 100 wht/(blk) 302 pn grn/(wht) 419 clg nvy/(wht) 463 ryl blu/(wht) 657 unv red/(wht) 739 unv gld/(blk)

616605 / **ACADEMY14 SIDELINE KNIT JACKET** / \$70
 588400 / **YOUTH ACADEMY14 SIDELINE KNIT JACKET** / \$65

Knit jacket with 7 cm collar with rib lining in contrast colour. Set in sleeves. Adjustability system at right side of hem. Rib hem and sleeve cuffs. Self fabric hem tab between hem rib and zipper. Contrast color self fabric cut and sew panels at both shoulders and upper and lower side panels. Exposed center front zip with zip guard at top of zipper. Concealed pocket zips at side seam. Football verbiage on back neck tape. Embroidered Swoosh design trademark on right chest. Embroidered Nike football logo on upper back. Dri-FIT logo on upper right below waistband. Body width: 19.75", body length: 26" (size medium). Youth body width: 18.5", youth body length: 20.75" (size medium).

FIRST OFFER DATE: 1-1-2014 ADULT SIZES: S, M, L, XL
 END DATE: 12-31-2016 YOUTH SIZES: XS, S, M, L, XL
 FABRIC: 100% POLYESTER



010 blk/(wht)

588501 / **LIBERO TECH KNIT PANT** / \$55
 588393 / **YOUTH LIBERO TECH KNIT PANT** / \$50

Technical knit pant. Grown on elasticated waistband with drawcords. Mesh set in panel at upper back with embroidered Nike football logo. No pockets. Embroidered Swoosh design trademark on left side. Dri-FIT logo on upper right below waistband. Hip width: 19.75" (size medium). Youth hip width: 16.5", youth inseam length: 27" (size medium).

FIRST OFFER DATE: 1-1-2016 ADULT SIZES: S, M, L, XL
 END DATE: 12-31-2016 YOUTH SIZES: XS, S, M, L, XL
 FABRIC: 100% POLYESTER

728112 / **NIKE PRO COOL SS** / \$30

New Nike Pro Cool short-sleeve top is the lightest and most minimal product with Dri-FIT technology to keep the athlete dry and cool. Featuring an improved fit for movement and sport. Center back mesh for venting. This short-sleeve top has inset sleeves with gusset for mobility. Crew shaped neck and screenprint Swoosh design trademark. Body width: 15.25", body length: 24" (size medium).

NEW
 FIRST OFFER DATE: 1-1-2016 ADULT SIZES: XS, S, M, L, XL, 2XL
 END DATE: 12-31-2018
 FABRIC: 84% POLYESTER/16% SPANDEX



010 blk/(wht) 091 pwtr/(wht) 341 grg grn/(wht) 493 ryl/(wht) 610 crdnl/(wht) 670 dk mnn/(wht)
 060 anthrct/(wht) 100 wht/(blk) 419 nvy/(wht) 545 prpl/(wht) 658 scrft/(wht)

728114 / **NIKE PRO COOL LS** / \$35

New Nike Pro Cool long-sleeve top is the lightest and most minimal product with Dri-FIT technology to keep the athlete dry and cool. Featuring an improved fit for movement and sport. Center back mesh for venting. This long-sleeve top has inset sleeves with gusset for mobility. Crew shaped neck and screenprint Swoosh design trademark. Body width: 15.25", body length: 24" (size medium).

NEW
 FIRST OFFER DATE: 1-1-2016 ADULT SIZES: XS, S, M, L, XL, 2XL
 END DATE: 12-31-2018
 FABRIC: 84% POLYESTER/16% SPANDEX



010 blk/(wht) 091 pwtr/(blk) 341 grg grn/(wht) 493 ryl/(wht) 610 crdnl/(wht) 670 dk mnn/(wht)
 060 anthrct/(wht) 100 wht/(blk) 419 nvy/(wht) 545 prpl/(wht) 658 scrft/(wht)

728512 / **NIKE BALANCE TANK** / \$25

The Nike Balance Tank is an update to the legend tank. The 187 come in Dri-FIT fabric to help keep her dry and comfortable, a wide variety of colors, and a racerback design for movability. Body width: 16.75", body length: 25.5" (size medium).

NEW
 FIRST OFFER DATE: 1-1-2016 ADULT SIZES: XS, S, M, L, XL, 2XL
 END DATE: 12-31-2018 FABRIC: 100% POLYESTER



010 blk/(wht) 091 pwtr/(wht) 100 wht/(blk) 341 grg grn/(wht) 419 nvy/(wht) 493 ryl/(wht) 545 prpl/(wht) 610 crdnl/(wht) 620 vvd pnk/(wht) 658 scrft/(wht)

728195 / **NIKE PRO CLASSIC BRA** / \$30

Dri-FIT Nike Pro compression bra with updated fit and fabrication. Revised body shape for improved support. Bonded seam on front strap, side exterior seam bonded seams. The perfect bra for every activity and motion with its compression fit which provides excellent support. Every detail is carefully considered including the flat and clean finished seams. Swoosh design trademark at center chest.

NEW
 FIRST OFFER DATE: 1-1-2016
 END DATE: 12-31-2018
 ADULT SIZES: XS, S, M, L, XL, 2XL
 FABRIC: 88% POLYESTER/12% SPANDEX



728192 / **NIKE PRO COOL 3" SHORT** / \$30

New Nike Pro Cool 3 short features an improved fit and updated fabrication for modesty. Maintaining lightweight and minimal seams for zero distraction and mobility, this iconic short is a favorite of the athlete. Updated wider Nike Pro waistband helps to keep the short in place during motion. Hip width: 13.5", inseam length: 5" (size medium).

NEW
 FIRST OFFER DATE: 1-1-2016
 END DATE: 12-31-2018
 ADULT SIZES: XS, S, M, L, XL, 2XL
 FABRIC: 80% POLYESTER/20% SPANDEX



728444 / **LEGEND 2.0 TIGHT** / \$70

New and improved Legend 2.0 featuring recycled polyester fabrication with black lycra. Waistband construction is tilted up in back for natural fit and coverage. Low profile pocket is bonded to the inside of the waistband for storage of small items. Body skimming fit through hip and thigh for comfort and style. Hip width: 18.5", inseam length: 32.5" (size medium).

NEW
 FIRST OFFER DATE: 1-1-2016
 END DATE: 12-31-2018
 ADULT SIZES: XS, S, M, L, XL, 2XL
 FABRIC: 88% POLYESTER/12% SPANDEX



453181 / **LEGEND SS TEE** / \$25
 453189 / **YOUTH LEGEND SS TEE** / \$20

Dri-FIT fabric wicks away sweat to help keep you comfortable and dry. Short-sleeve construction is ideal for a variety of training conditions. Neck tape added for durability and comfort. Swoosh design trademark at upper left chest. Body width: 18.75", body length: 26.25" (size medium). Youth body width: 17.75", youth body length: 23.5" (size medium).

FIRST OFFER DATE: 4-1-2016
 END DATE: 12-31-2018
 FABRIC: 100% POLYESTER
 ADULT SIZES: XS, S, M, L, XL, 2XL
 YOUTH SIZES: S, M, L, XL



453182 / **LEGEND LS TEE** / \$28

Dri-FIT fabric wicks away sweat to help keep you comfortable and dry. Long-sleeve construction is ideal for a variety of training conditions. Neck tape added for durability and comfort. Swoosh design trademark at upper left chest. Body width: 18.75", body length: 26.25" (size medium).

FIRST OFFER DATE: 4-1-2016
 OFFER DATE: 12-31-2018
 FABRIC: 100% POLYESTER
 ADULT SIZES: XS, S, M, L, XL, 2XL



010 blk/(wht) 106 wht/(blk) 316 kly grn/(wht) 420 nvy/(wht) 494 ryl/(wht) 612 crdnl/(wht) 658 scrtr/(wht) 717 brt gld/(wht) 803 dsrt org/(wht)
 061 anthrct/(wht) 257 brn/(wht) 342 dk grn/(wht) 453 lt blu/(wht) 546 prpl/(wht) 620 vvd pnk/(wht) 670 dk mrm/(wht) 784 vgs gld/(wht) 821 org/(wht)

658063 / NIKE TEAM GAMEDAY POLO / \$40

This short-sleeve polo has a Dri-FIT double knit flat back mesh body fabric with self collar. Contrast mesh insets at shoulder, collar and side seam. 3 Button front placket. Embroidered Swoosh design trademark at right chest. Body width: 19", body length: 26.25" (size medium).

FIRST OFFER DATE: 1-1-2015 ADULT SIZES: XS, S, M, L, XL, 2XL
 OFFER DATE: 12-31-2017 FABRIC: 100% POLYESTER



012 blk/(wht) 061 anthrct/(wht) 100 wht/(blk) 106 wht/(anthrct) 342 dk grn/(wht) 420 nvy/(wht) 494 ryl/(wht) 612 crdnl/(wht) 658 scrtr/(wht) 670 dk mrm/(wht)

728202 / NIKE TEAM LS GAMEDAY POLO / \$45

This long-sleeve polo has a Dri-FIT double knit flat back mesh body fabric with self collar. Contrast mesh insets at shoulder, collar and side seam. 3 Button front placket. Embroidered Swoosh design trademark at right chest. Body width: 19", body length: 26.25" (size medium).

FIRST OFFER DATE: 1-1-2016 ADULT SIZES: XS, S, M, L, XL, 2XL
 OFFER DATE: 12-31-2017 FABRIC: 100% POLYESTER



012 blk/(wht) 061 anthrct/(wht) 420 nvy/(wht) 494 ryl/(wht) 658 scrtr/(wht)

615729 / COACH POCKET SHORT 14 / \$35

Dri-FIT double knit body fabric with contrast side panel insert. Elastic waistband with drawcord. Side pockets and side hem vents. Heat transfer Swoosh design trademark on left hip. Hip width: 22.25" (size medium), inseam length: 7" (all sizes).

FIRST OFFER DATE: 1-1-2014 ADULT SIZES: XS, S, M, L, XL, 2XL
 OFFER DATE: 1-1-2017 FABRIC: 100% POLYESTER



012 blk/(wht) 063 dk gry htr/(wht) 249 brn/(wht) 341 dk grn/(wht) 448 lt blu/(wht) 545 prpl/(wht) 657 scrtr/(wht) 716 brt gld/(blk) 802 dsrt org/(wht)
 060 anthrct/(wht) 100 wht/(blk) 315 kly grn/(wht) 419 nvy/(wht) 493 ryl/(wht) 610 crdnl/(wht) 669 dk mrm/(wht) 783 vgs gld/(blk) 820 org/(wht)

598575 / NIKE TEAM CLUB FLEECE HOODY / \$45
598446 / YOUTH NIKE TEAM CLUB FLEECE HOODY / \$40

Women's specific fit. Long-sleeve hooded fleece with at center front neck. Knit rib sleeve cuff and waistband. Drawcord at neck opening and lined hood. Center front pocket. Embroidered Swoosh design trademark located centered below neck opening. Body width: 21.25", body length: 26" (size medium). Tail body length: +2.375" (all sizes). Tail sleeve length: +2.375" (all sizes). Youth body width: 18", youth body length: 21.5" (size medium). *Talls colors: 010, 063, 419, 493, 657.

FIRST OFFER DATE: 1-1-2014 ADULT SIZES: XS, S, M, L, XL, 2XL, 3XL, *ST, MT, LT, XLT, 2XLT
 END DATE: 12-31-2016 YOUTH SIZES: S, M, L, XL
 FABRIC: SOLID: 80% COTTON/20% POLYESTER. HEATHER: 70% COTTON/30% POLYESTER.



010 blk/(wht) 060 anthrct/(wht) 063 dk gry htr/(wht) 100 wht/(blk) 341 dk grn/(wht) 419 nvy/(wht) 493 ryl/(wht) 545 prpl/(wht) 610 crdnl/(wht) 657 scrtr/(wht) 669 dk mrm/(wht)

598576 / NIKE TEAM CLUB FLEECE PANT / \$40
598447 / YOUTH NIKE TEAM CLUB FLEECE PANT / \$40

Women's specific fit. Fleece pant with rib waistband. Drawcord at waistband for adjustability with side pockets and open hem. Embroidered Swoosh design trademark at left hip. Hip width: 21.25", inseam length: 32" (size medium). Tail inseam length: +2.375" (all sizes). Youth hip width: 17.5", youth inseam length: 26" (size medium). *Talls colors: 010, 063, 419, 493, 657.

FIRST OFFER DATE: 1-1-2014 ADULT SIZES: XS, S, M, L, XL, 2XL, 3XL, *ST, MT, LT, XLT, 2XLT
 END DATE: 12-31-2016 YOUTH SIZES: S, M, L, XL
 FABRIC: SOLID: 80% COTTON/20% POLYESTER. HEATHER: 70% COTTON/30% POLYESTER.