

MEN'S SOCCER



MEN'S DIGITAL SOCCER GAME JERSEY

379164 A fully sublimated game jersey designed for the elite athlete.



Ability to place unique team name or logo

Dri-FIT flat-back mesh construction

Two Federation designs to choose from

MEN'S DIGITAL SOCCER GAME SHORT

379167 Fully sublimated high-performance game short.



Dri-FIT flat-back mesh construction

Inseam: 7" (size large)

Ability to place unique team logo or number



TIEMPO LEGEND III FG

366201 New refinements elevate this staple soccer boot to the highest levels of craftsmanship.



FC JACKET

325296 Dri-FIT fabric warp knit warm-up jacket with contrast insets on sides, neck and front shoulders.



MERCURIAL LITE SHINGUARD

SP0233 Low-profile construction provides protection while not distracting the athlete. NikeFIT dry fabric sleeves are highly breathable and lightweight.



T90 PREMIER TEAM BALL

SC1794 Geo Balanced technology allows for truer and more accurate flight. Hand-stitched high-quality PU.

379168 MEN'S BRASILIA III GAME JERSEY**\$44.00**

SIZES: S, M, L, XL, XXL

OFFER DATE: 01/01/06
END DATE: 01/01/10

Short-sleeve Dri-FIT crew neck soccer jersey. No distractions seaming. #3 embroidered Swoosh design trademark at upper right chest, Nike Team Sports badge at lower left front. Body length: 31.5" (size large).

FAB RIC: 100% polyester.

010 Black/(White)	100 White/(Silver)	341 Dark Green/(White)
419 Navy/(White)	448 Light Blue/(White)	493 Royal/(White)
610 Cardinal/(White)	657 Scarlet/(White)	750 Gold/(White)
888 University Orange/(White)		

Youth #379155 / S-XL / \$40.00 / Body length: 24" (size medium)

DRI-FIT **432351 MEN'S BRASILIA III GAME SHORT****\$30.00**

SIZES: S, M, L, XL, XXL

OFFER DATE: 01/01/06
END DATE: 01/01/10

Dri-FIT longer length soccer game short. No distractions seaming. #3 embroidered Swoosh design trademark at left front. Inseam: 7" (size large).

FAB RIC: Body: 100% polyester.

010 Black/(White)	100 White/(Silver)	341 Dark Green/(White)
419 Navy/(White)	448 Light Blue/(White)	493 Royal/(White)
610 Cardinal/(White)	657 Scarlet/(White)	750 Gold/(White)
888 University Orange/(White)		

Youth #432352 / S-XL / \$28.00 / Inseam: 5" (size medium)

DRI-FIT **373813 PREMIUM BRASIL S/S JERSEY US****\$65.00**

SIZES: S, M, L, XL, 2XL

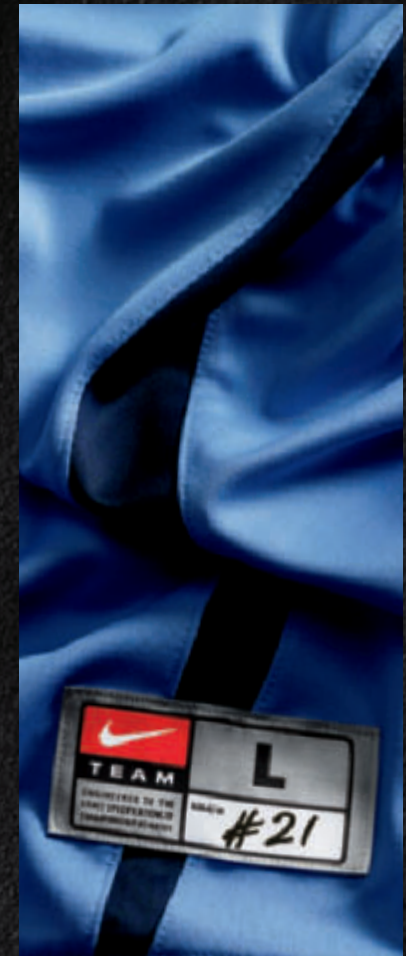
OFFER DATE: 06/01/10
END DATE: 06/01/13

100% recycled polyester, side panel with laser cut holes, embroidered Swoosh design trademark and Dri-FIT logo, shoulder screen print. Body length: 28.5" (size large).

FAB RIC: 100% polyester.

012 Black/White/(White)	106 White/Black/(Black)	342 Gorge Green/White/(White)
420 College Navy/White/(White)	494 Varsity Royal/White/(White)	612 Cardinal/White/(White)
658 University Red/White/(White)	705 Varsity Maize/Pine Green/(Pine Green)	

Youth #376507 / XS-XL / \$60.00 / Body length: 23.25" (size medium)

DRI-FIT **MEN'S
SOCCER**

Stock Uniforms

325292 FC JERSEY**\$50.00**

SIZES: S, M, L, XL, 2XL

OFFER DATE: 01/01/09
END DATE: 01/01/12

Short-sleeve Dri-FIT fabric jersey with striped mesh front. Contrast insets at front and back shoulders and hem. Heat transfer stripe detail on back. Embroidered Swoosh design trademark at right chest and heat transfer Nike Team Sports jock tag at left hem. Body length: 32.125" (size large).

FABRIC: 100% polyester.

012 Black/White/(White)	100 White/White/(Pewter Grey)	342 Dark Green/White/(White)
420 Navy/White/(White)	494 Royal/White/(White)	612 Cardinal/White/(White)
658 Scarlet/White/(White)	741 Gold/White/(White)	463 Royal/Gold/(Gold)
889 University Orange/White/(White)	013 Black/Scarlet/(Scarlet)	

YOUTH #325308 / S-XL / \$44.00 / Body length: 24.875" (size medium)

DRI-FIT **325293 FC SHORT****\$35.00**

SIZES: S, M, L, XL, 2XL

OFFER DATE: 01/01/09
END DATE: 01/01/12

Dri-FIT fabric woven game short with Dri-FIT fabric gusset. Contrast detail on sides and hem with Dri-FIT fabric mesh panel on back. Embroidered Swoosh design trademark on lower left leg. Inseam: 6" (size large).

FABRIC: 100% polyester.

012 Black/White/(White)	100 White/White/(Pewter Grey)	342 Dark Green/White/(White)
420 Navy/White/(White)	494 Royal/White/(White)	612 Cardinal/White/(White)
658 Scarlet/White/(White)	741 Gold/White/(White)	463 Royal/Gold/(Gold)
889 University Orange/White/(White)	013 Black/Scarlet/(Scarlet)	

YOUTH #325309 / S-XL / \$30.00 / Inseam: 4.75" (size medium)

DRI-FIT 

339072 LASER JERSEY

\$48.00

SIZES: S, M, L, XL, 2XL

OFFER DATE: 06/01/09

END DATE: 06/01/12

Dri-FIT fabric short-sleeve game jersey with contrast striping in home and away colors. Heat transfer Nike Team Sports jock tag at left hem. Embroidered Swoosh design trademark on right chest. Body length: 30" (size large).

FABRIC: 100% polyester.

012 Black/White/(White)	104 White/Cardinal/(Cardinal)	106 White/Black/(Black)
107 White/Navy/(Navy)	108 White/Royal/(Royal)	109 White/Scarlet/(Scarlet)
110 White/Purple/(Purple)	111 White/Dark Green/(Dark Green)	113 White/Univ. Orange/(Univ. Orange)
342 Dark Green/White/(White)	420 Navy/White/(White)	494 Royal/White/(White)
546 Purple/White/(White)	612 Cardinal/White/(White)	658 Scarlet/White/(White)
889 University Orange/White/(White)		

Youth #339084 / S-XL / \$42.00 / Body length: 24" (size medium)

DRI-FIT 



339073 LASER SHORT

\$38.00

SIZES: S, M, L, XL, 2XL

OFFER DATE: 06/01/09

END DATE: 06/01/12

Longer-length game short of high spandex polyester woven fabric for comfort and stretch. Contrast side stripes and boxer brief liner. Interior seams bound with contrast fabric for reinforcement. Contrast stitching across back yoke seam. Soft exposed waist elastic with contrast pinstripe. Embroidered Swoosh design trademark at lower left leg. Inseam: 7" (size large).

FABRIC: Body: 84% polyester/16% spandex. Lining: 100% polyester.

010 Black/Black/(White)	012 Black/White/(White)	100 White/White/(Black)
342 Dark Green/White/(White)	420 Navy/White/(White)	546 Purple/White/(White)
494 Royal/White/(White)	612 Cardinal/Cardinal/(White)	658 Scarlet/Scarlet/(White)
889 University Orange/White/(White)		

Youth #339085 / S-XL / \$33.00 / Inseam: 5" (size medium)

DRI-FIT 



339077 BREMEN JERSEY**\$35.00****SIZES:** S, M, L, XL, 2XL**OFFER DATE:** 06/01/09**END DATE:** 06/01/12

Dri-FIT fabric short-sleeve game jersey with sublimated diamond pattern. Two-piece raglan sleeve. Dri-FIT fabric mesh inserts in sides. Heat transfer Nike Team Sports jock tag at left hem. Embroidered Swoosh design trademark at center front chest. Body length: 30" (size large).

Fabric: 100% polyester.

010 Black/(White)	100 White/(Black)	341 Dark Green/(White)
419 Navy/(White)	493 Royal/(White)	545 Purple/(White)
610 Cardinal/(White)	657 Scarlet/(White)	888 University Orange/(White)

Youth #339089 / S-XL / \$30.00 / Body length: 24" (size medium)

DRI-FIT **339078 BREMEN SHORT****\$25.00****SIZES:** S, M, L, XL, 2XL**OFFER DATE:** 06/01/09**END DATE:** 06/01/12

Dri-FIT woven fabric game short with Dri-FIT fabric mesh side insets. Embroidered Swoosh design trademark on lower left leg. Inseam: 5.5" (size large).

Fabric: 100% polyester.

010 Black/White/(White)	100 White/(Black)	341 Dark Green/(White)
419 Navy/(White)	493 Royal/(White)	545 Purple/(White)
610 Cardinal/(White)	657 Scarlet/(White)	888 University Orange/(White)

Youth #339090 / S-XL / \$22.00 / Inseam: 4.5" (size medium)

DRI-FIT 

379170 MEN'S RIO II S/S JERSEY**\$25.00**

SIZES: S, M, L, XL, 2XL

OFFER DATE: 06/01/10
END DATE: 06/01/13

Short-sleeve crew neck soccer game jersey. Dri-FIT piqué front and sleeves with a horizontal front mesh chest inset. Dri-FIT mesh at back and sides for additional ventilation. #3 embroidered Swoosh design trademark at right chest. Nike Team Sports jock tag heat transfer at lower left front. Body length: 31.5" (size large).

F**Ab Ric**: 100% polyester.

012 Black/White/(White)	100 White/White/(Silver)	342 Dark Green/White/(White)
420 Navy/White/(White)	453 Light Blue/White/(White)	494 Royal/White/(White)
612 Cardinal/White/(White)	658 Scarlet/White/(White)	741 Gold/White/(White)
889 Univ Orange/White/(White)		

Youth #379157 / S-XL / \$22.00 / Body length: 24" (size medium)

DRI-FIT **379171 MEN'S RIO II L/S JERSEY****\$30.00**

SIZES: S, M, L, XL, 2XL

OFFER DATE: 06/01/10
END DATE: 06/01/13

Long-sleeve crew neck soccer game jersey. Dri-FIT piqué front and sleeves with a horizontal front mesh chest inset. Dri-FIT mesh at back and sides for additional ventilation. #3 embroidered Swoosh design trademark at right chest. Nike Team Sports jock tag heat transfer at lower left front. Body length: 31.5" (size large).

F**Ab Ric**: 100% polyester.

012 Black/White/(White)	100 White/White/(Silver)	342 Dark Green/White/(White)
420 Navy/White/(White)	453 Light Blue/White/(White)	494 Royal/White/(White)
612 Cardinal/White/(White)	658 Scarlet/White/(White)	741 Gold/White/(White)
889 Univ Orange/White/(White)		

Youth #379158 / S-XL / \$28.00 / Body length: 24" (size medium)

DRI-FIT **379172 MEN'S RIO II GAME SHORT****\$20.00**

SIZES: S, M, L, XL, 2XL

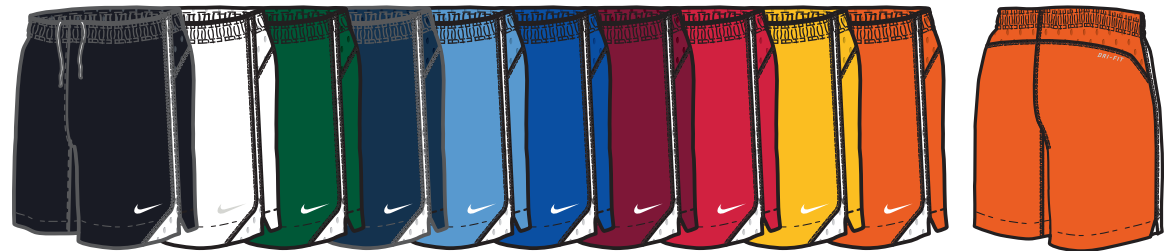
OFFER DATE: 06/01/10
END DATE: 06/01/13

Woven soccer game short. White colorway is lined with Dri-FIT mesh. Dri-FIT taffeta with Dri-FIT mesh back yoke and contrast mesh side panels. #3 embroidered Swoosh design trademark at left front. Inseam: 7" (size large).

F**Ab Ric**: 100% polyester.

012 Black/White/(White)	100 White/White/(Silver)	342 Dark Green/White/(White)
420 Navy/White/(White)	453 Light Blue/White/(White)	494 Royal/White/(White)
612 Cardinal/White/(White)	658 Scarlet/White/(White)	741 Gold/White/(White)
889 Univ Orange/White/(White)		

Youth #379159 / S-XL / \$18.00 / Inseam: 6" (size medium)

DRI-FIT 

269751 TIEMPO JERSEY (UNISEX) \$18.00

SIZES: S, M, L, XL, 2XL

OFFER DATE: 06/01/08
END DATE: 06/01/11

Short-sleeve crew-neck game day jersey. Contrast collar and sleeve inset. Embroidered Swoosh design trademark at right chest. Body length: 28" (size large).

FABRIC: 100% polyester.

002 Silver/Black/(Black)	012 Black/White/(White)	100 White/White/(Black)
342 Dark Green/White/(White)	420 Navy/White/(White)	453 Light Blue/White/(White)
494 Royal/White/(White)	546 Purple/White/(White)	612 Cardinal/White/(White)
658 Scarlet/White/(White)	667 Shy Pink/White/(White)	742 Gold/Black/(Black)
889 University Orange/White/(White)		

Youth #269753 / XS-XL / \$17.00 / Body length: 22.75" (size medium)

DRI-FIT 



269752 TIEMPO SHORT (UNISEX) \$16.00

SIZES: S, M, L, XL, 2XL

OFFER DATE: 06/01/08
END DATE: 06/01/11

Game day short with elastic waistband and drawcord for custom fit. Embroidered Swoosh design trademark at lower left thigh. Inseam: 6" (size large).

FABRIC: 100% polyester.

012 Black/White/(White)	100 White/White/(Black)	420 Navy/White/(White)
494 Royal/White/(White)	658 Scarlet/White/(White)	

Youth #269754 / XS-XL / \$15.00 / Inseam: 5" (size medium)

DRI-FIT 



361044 MEN'S DRI-FIT REVERSIBLE JERSEY \$35.00

SIZES: S, M, L, XL, 2XL

OFFER DATE: 01/01/10
END DATE: 01/01/13

Updated design. Dri-FIT fabric reversible jersey (team color reverses to a light grey) with light grey flat-lock stitching along design lines (both sides) and contrast side panels. Heat applied Swoosh design trademark applied on inside and outside of garment centered at upper front chest. Body length: 30.25" (size large).

FABRIC: 100% polyester.

010 Black/(White)	341 Dark Green/(White)	419 Navy/(White)
493 Royal/(White)	657 Scarlet/(White)	

Youth #368971 / S-XL / \$30.00 / Body length: 24" (size medium)

DRI-FIT 



361045 MEN'S DRI-FIT GAME SHORT \$20.00

SIZES: S, M, L, XL, 2XL

OFFER DATE: 01/01/10
END DATE: 01/01/13

Updated design. Dri-FIT fabric woven game short with side vent, gripper elastic waist and embroidered Swoosh design trademark on left leg. Inseam: 7" (size large).

FABRIC: 100% polyester.

010 Black/(White)	100 White/(Black)	341 Dark Green/(White)
419 Navy/(White)	493 Royal/(White)	657 Scarlet/(White)

Youth #368972 / S-XL / \$18.00 / Inseam: 4.5" (size medium)

DRI-FIT 



361048 MEN'S L/S TRAINING TOP**\$65.00*****SIZES:** S, M, L, XL, 2XL**OFFER DATE:** 01/01/10

*15% upcharge for 3XL

END DATE: 01/01/13

Updated design. Dri-FIT fabric technical training top with four-way mechanical stretch, half-zip front and vented back panels for thermal regulation. Swoosh design trademark on right chest. Body length: 30.75" (size large).

FAB RIC: Body: 92% polyester/8% spandex. Insets: 95% polyester/5% spandex.

018 Black/Silver/Silver	214 Anthracite/Silver/Silver	346 Dark Green/Silver/Silver
-------------------------	------------------------------	------------------------------

424 Navy/Silver/Silver	499 Royal/Silver/Silver	664 Scarlet/Silver/Silver
------------------------	-------------------------	---------------------------

Youth #368976 / S-XL / \$60.00 / Body length: 24" (size medium)

DRI-FIT **379173 MEN'S QUARTER-ZIP PERFORMANCE FLEECE TOP****\$60.00*****SIZES:** S, M, L, XL, 2XL**OFFER DATE:** 06/01/10

*15% upcharge for 3XL

END DATE: 06/01/13

Long-sleeve quarter-zip performance fleece pull-over top. Therma-FIT technical fleece with Dri-FIT mesh underarm and side panels for ventilation. 2x2 knit rib at cuffs for a snug fit. No sew inside music pocket. Contrast top stitching. #3 embroidered Swoosh design trademark at right chest. Body length: 31" (size large).

FAB RIC: 100% polyester.

010 Black/Silver	060 Anthracite/Silver	341 Dark Green/Silver
------------------	-----------------------	-----------------------

419 Navy/Silver	493 Royal/Silver	610 Cardinal/Silver
-----------------	------------------	---------------------

657 Scarlet/Silver	669 Dark Maroon/Silver
--------------------	------------------------

Youth #379161 / S-XL / \$55.00 / Body length: 24" (size medium)

DRI-FIT 

361036 MEN'S T90 RAIN JACKET**\$110.00**

SIZES: S, M, L, XL, 2XL

OFFER DATE: 01/01/10

END DATE: 01/01/13

Updated design. Technical Nike Clima-FIT fabric rain jacket with hood and vented back. Anthracite color pop on left chest. Zippered front pockets with music enabled player cord system in right pocket. Swoosh design trademark at upper right chest. Body length: 31" (size large).

Fabric: Jacket Body: Clima-FIT 120g, 100% polyester dobby.

020 Black/anthracite/(White)	361 Dark Green/anthracite/(White)	418 Navy/anthracite/(White)
------------------------------	-----------------------------------	-----------------------------

466 Royal/anthracite/(White)	656 Scarlet/anthracite/(White)
------------------------------	--------------------------------

Youth #368970 / S-XL / \$95.00 / Body length: 25.5" (size medium)

DRI-FIT **361037 MEN'S T90 RAIN PANT****\$70.00**

SIZES: S, M, L, XL, 2XL

OFFER DATE: 01/01/10

END DATE: 01/01/13

Updated design. Technical Nike Clima-FIT fabric rain pant with elastic drawcord waist and leg zips at bottom hem. Embroidered Swoosh design trademark at upper left leg. Inseam: 32.125" (size large).

Fabric: Body: Clima-FIT 120g, 100% polyester dobby

010 Black/(White)	060 Anthracite/(White)
-------------------	------------------------

Youth #368969 / S-XL / \$55.00 / Inseam: 25.5" (size medium)

DRI-FIT 

339079 LASER WARM-UP JACKET**\$90.00****SIZES:** S, M, L, XL, 2XL**OFFER DATE:** 06/01/09**END DATE:** 06/01/12

Dri-FIT woven fabric full-zip warm-up jacket with mesh liner. Printed striped inserts on shoulders and sides. Zippered pockets with internal MP3 player in right pocket. Body length: 29.375" (size large).

Fabric: Body and Body Lining: 100% polyester. Sleeve Lining: 100% nylon.

012 Black/White/(White)	342 Dark Green/White/(White)	420 Navy/White/(White)
494 Royal/White/(White)	612 Cardinal/White/(White)	658 Scarlet/White/(White)

Youth #339091 / S-XL / \$85.00 / Body length: 22" (size large)

DRI-FIT 

**339080 LASER WARM-UP PANT****\$60.00****SIZES:** S, M, L, XL, 2XL**OFFER DATE:** 06/01/09**END DATE:** 06/01/12

Dri-FIT woven fabric warm-up pants with mesh liner. Zippered pockets and lower leg zips for easy pant removal. Embroidered Swoosh design trademark on left leg. Inseam: 30.5" (size large).

Fabric: Body and Body Lining: 100% polyester. Leg Lining: 100% nylon.

010 Black/(White)	419 Navy/(White)
--------------------------	-------------------------

Youth #339092 / S-XL / \$55.00 / Inseam: 23" (size medium)

DRI-FIT 



325296 FC JACKET**\$70.00**

SIZES: S, M, L, XL, 2XL

OFFER DATE: 01/01/09
END DATE: 01/01/12

Dri-FIT fabric warp knit warm-up jacket with contrast insets on sides, neck and front shoulders. Full-zip front with zippered side pockets and internal MP3 player pocket in right pocket. Embroidered Swoosh design trademark on upper right chest. Body length: 28.25" (size large).

FAB RIC: 100% polyester.

012 Black/White/(White)	061 Pewter Grey Grey/White/(White)	106 White/Black/(Black)
342 Dark Green/White/(White)	420 Navy/White/(White)	494 Royal/White/(White)
612 Cardinal/White/(White)	658 Scarlet/White/(White)	

YOUTH #325312 / S-XL / \$60.00 / Body length: 22" (size medium)

DRI-FIT **325297 FC PANT****\$50.00**

SIZES: S, M, L, XL, 2XL

OFFER DATE: 01/01/09
END DATE: 01/01/12

Dri-FIT fabric warp knit warm-up pant with drawstring waist, zippered side pockets and contrast detail at side seams. Tapered leg with 12" zipper up each leg. Embroidered Swoosh design trademark at upper left leg. Inseam: 30.5" (size large).

FAB RIC: 100% polyester.

012 Black/White/(White)	061 Pewter Grey/White/(White)	420 Navy/White/(White)
-------------------------	-------------------------------	------------------------

YOUTH #325313 / S-XL / \$45.00 / Inseam: 23" (size medium)

DRI-FIT **325298 3/4 PANT****\$40.00**

SIZES: S, M, L, XL, 2XL

OFFER DATE: 01/01/09
END DATE: 01/01/12

Dri-FIT fabric warp knit 3/4-length warm-up pant with drawstring waist and zippered side pockets. Open bottom with mesh inset behind knee. Embroidered Swoosh design trademark at upper left leg. Inseam: 15.125" (size large).

FAB RIC: 100% polyester.

010 Black/(White)	061 Pewter Grey/White/(White)	420 Navy/White/(White)
-------------------	-------------------------------	------------------------

YOUTH #325314 / S-XL / \$38.00 / Inseam: 12.25" (size medium)

DRI-FIT 

373817 FEDERATION DRI-FIT KNIT JACKET US**\$75.00**

SIZES: S, M, L, XL, 2XL

OFFER DATE: 06/01/10
END DATE: 06/01/13

Dri-FIT Knit full-zip warm-up jacket with zippered pockets based off the same design National teams will wear in 2010. Embroidered Swoosh design trademark on right chest. Body length: 26" (size large).

FAB Ric: Body: 100% polyester. Rib: 100% polyester.

012 Black/White/(White)	342 Gorge Green/White/(White)	420 College Navy/White/(White)
493 Varsity Royal/White/(White)	612 Cardinal/White/(White)	658 University Red/White/(White)

Youth #391429 / XS-XL / \$70.00 / Body length: 22.25" (size medium)

DRI-FIT **342787 MEN'S CLASSIC WARM-UP JACKET****\$70.00**

SIZES: S, M, L, XL, 2XL

OFFER DATE: 06/01/09
END DATE: 06/01/12

Dri-FIT knit fabric full-zip warm-up jacket with zippered pockets and black sleeves. MP3 player pocket inside right pocket. Embroidered Swoosh design trademark on right chest. Body length: 23.375" (size large).

FAB Ric: 100% polyester.

010 Black/Black/(White)	099 Pewter Grey/Black/(White)	343 Dark Green/Black/(White)
427 Navy/Black/(White)	496 Royal/Black/(White)	613 Cardinal/Black/(White)
661 Scarlet/Black/(White)		

Youth #344695/ S-XL / \$65.00 / Body length: 22" (size medium)

DRI-FIT **342786 MEN'S CLASSIC WARM-UP PANT****\$50.00**

SIZES: S, M, L, XL, 2XL

OFFER DATE: 06/01/09
END DATE: 06/01/12

Dri-FIT knit fabric warm-up pant with drawcord waist, side pockets and lower leg. Zips for easy pant removal. Embroidered Swoosh design trademark on left leg. Inseam: 30.5" (size large).

FAB Ric: 100% polyester.

010 Black/(White)

Youth #344696 / S-XL / \$45.00 / Inseam: 23" (size medium)

DRI-FIT 

379176 MEN'S RIO II WARM-UP JACKET**\$45.00**

SIZES: S, M, L, XL, 2XL
 *15% upcharge for 3XL

OFFER DATE: 06/01/10
END DATE: 06/01/13

Poly knit warm-up jacket with a horizontal front chest inset. Center front full-zip opening, front side pockets, 1x1 rib knit waist and cuffs, #3 embroidered Swoosh design trademark at left front. Body length: 29.25" (size large).

FAB RIC: Body: 100% polyester. Rib: 95% polyester/5% spandex.

012 Black/White/(White)	342 Dark Green/White/(White)	420 Navy/White/(White)
494 Royal/White/(White)	658 Scarlet/White/(White)	

Youth #379162 / S-XL / \$42.00 / Body length: 24" (size medium)

Y**379175 MEN'S RIO II WARM-UP PANT****\$35.00**

SIZES: S, M, L, XL, 2XL
 *15% upcharge for 3XL

OFFER DATE: 06/01/10
END DATE: 06/01/13

Poly knit warm-up pant. Front pockets, elastic waist with drawcord, leg zippers, #3 embroidered Swoosh design trademark at left front. Inseam: 30.5" (size large)

FAB RIC: Body: 100% polyester.

010 Black/(White)	419 Navy/(White)
-------------------	------------------

Youth #379163 / S-XL / \$33.00 / Inseam: 24" (size medium)

Y

361122 | PARK III L/S GOALIE**\$70.00**

SIZES: XS, S, M, L, XL, 2XL

OFFER DATE: 06/01/10
END DATE: 06/01/13

Long sleeve Dri-FIT goalie jersey. Crew neck pull-over with sublimated printed sleeves, mesh side panels. Embroidered Swoosh design trademark at right front. Body length: 30.75" (size large).

FABRIC: Body: 100% polyester. Mesh: 100% polyester.

010 Black/Matte Silver/(White)	075 Matte Silver/Black/(Black)	302 Pine Green/Black/(White)
406 Photo Blue/Black/(White)	698 Varsity Crimson/Black/(White)	703 Varsity Maize/Black/(Black)
827 Orange Blaze/Black/(White)		

Youth #361137 / XS-XL / \$65.00 / Body length: 25.375" (size medium)

DRI-FIT **Y****361047 | MEN'S REVERSIBLE GOALKEEPER JERSEY****\$50.00**

SIZES: S, M, L, XL, 2XL

OFFER DATE: 01/01/10
END DATE: 01/01/13

Dri-FIT fabric reversible goalkeeper jersey with contrast flat-lock stitching along design lines (both sides) and contrast side panels and forearms. Heat applied Swoosh design trademark applied on inside and outside of garment centered at upper front chest. Body length: 32.375" (size large).

FABRIC: 100% polyester.

020 Black/Anthracite/Chile Red	310 Kelly Green/Anthracite/Yellow Strike	478 Valor Blue/Anthracite/Black
656 Chile Red/Anthracite/Yellow Strike		

Youth #368975 / S-XL / \$45.00 / Body length: 24" (size medium)

DRI-FIT **Y****371588 | SCRIMMAGE VEST (UNISEX)****\$10.00**

SIZES: ONE SIZE FITS ALL

OFFER DATE: 01/01/10

Scrimmage vest with screen-printed "Soccer" and Swoosh design trademark at center chest. Sold in pre-packs of three. Body length: 22.75".

FABRIC: 100% polyester.

315 Radiant Green/(Black)	493 Blue Reef/(Black)	820 Sunburst/(Black)
716 Chrome Yellow/(Black)		

Youth #371589 / ONE SIZE / \$9.00 / Body length: 20.75" / Sold in pre-packs of three

Y

413309 BRASIL III SOCK (UNISEX)

\$16.00

SIZES: S, M, L

OFFER DATE: 06/01/09
END DATE: 06/01/12

Sold in pre-packs of six.

FABRIC: 88% nylon/9% polyester/3% spandex.

012 Black/White/(Black)	106 White/Black/(Black)	107 White/Navy/(Navy)
108 White/Royal/(Royal)	109 White/Scarlet/(Scarlet)	111 White/Dark Green/(Dark Green)
342 Dark Green/White/(White)	420 Navy/White/(White)	494 Royal/White/(White)
658 Scarlet/White/(White)		



399897 VAPOR SOCK (UNISEX)

\$12.00

SIZES: S, M, L

OFFER DATE: 06/01/09
END DATE: 06/01/12

Sold in pre-packs of six.

FABRIC: 89% nylon/8% polyester/3% spandex.

012 Black/White/(White)	013 Black/University Red/(University Red)	104 White/Team Maroon/(Team Maroon)
106 White/Black/(Black)	107 White/College Navy/(College Navy)	108 White/Game Royal/(Game Royal)
109 White/University Red/(University Red)	111 White/Gorge Green/(Gorge Green)	342 Gorge Green/White/(White)
420 College Navy/White/(White)	494 Game Royal/White/(White)	498 Game Royal/Univ Gold/(Univ Gold)
612 Team Maroon/White/(White)	658 University Red/White/(White)	



394386 CLASSIC III SOCK (UNISEX)

\$10.00

SIZES: S, M, L

OFFER DATE: 07/01/10
END DATE: 07/01/13

Sold in pre-packs of six.

FABRIC: 93% nylon/6% polyester/1% spandex.

010 Black/(White)	057 Pewter/(Black)	100 White/(Black)
323 Gorge Green/(White)	410 College Navy/(White)	448 Valor Blue/(White)
460 Game Royal/(White)	545 Court Purple/(White)	648 University Red/(White)
677 Team Maroon/(White)	750 University Gold/(White)	888 University Orange/(White)



394385 PARK III SOCK (UNISEX)

\$6.00

SIZES: S, M, L

OFFER DATE: 07/01/10
END DATE: 07/01/13

Sold in pre-packs of six.

FABRIC: 95% polyester/5% spandex.

010 Black/(White)	100 White/(Black)	323 Gorge Green/(White)
410 College Navy/(White)	448 Valor Blue/(White)	460 Game Royal/(White)
545 Court Purple/(White)	648 University Red/(White)	667 Shy Pink/(Black)
677 Team Maroon/(White)	750 University Gold/(White)	888 University Orange/(White)



389788 MEN'S C&S S/S BRASILIA III JERSEY

\$50.00



SIZES: S, M, L, XL, 2XL

OFFER DATE: 06/01/10
END DATE: 06/01/13

Dri-FIT fabric short-sleeve crew neck soccer jersey. No distractions seaming. Teams can customize the jerseys color blocking for a unique and functional new uniform. #3 Swoosh design trademark at upper right chest, Nike Team Sports jock tag at lower left front. Body length: 31.5" (size large).

FABRIC: 100% polyester.

Men's L/S #415929 / S-2XL / \$55.00 / Body length: 31.5" (size large)

Youth S/S #389786 / S-XL / \$45.00 / Body length: 24" (size medium)

Youth L/S #415928 / S-XL / \$50.00 / Body length: 24" (size medium)

DRI-FIT **MD** **Y**



389789 MEN'S C&S BRASILIA III SHORT

\$35.00



SIZES: S, M, L, XL, 2XL

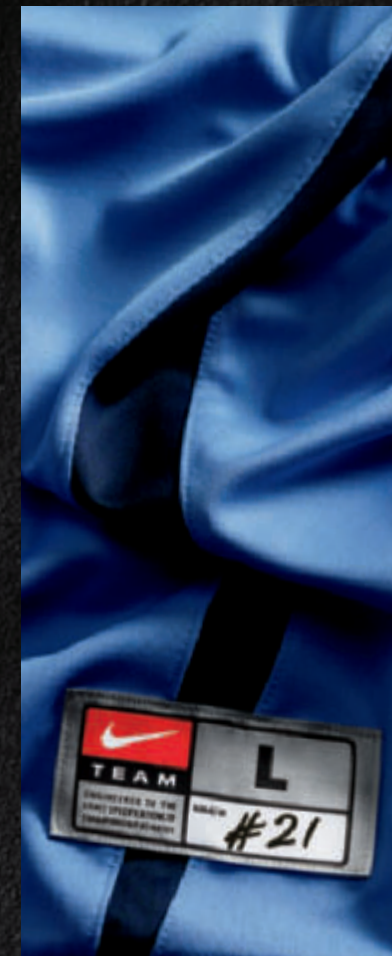
OFFER DATE: 06/01/10
END DATE: 06/01/13

Dri-FIT fabric longer length soccer game short. No distractions seaming. Teams can customize the shorts color blocking for a unique and functional new uniform. #3 Swoosh design trademark at left front. Inseam: 7" (size large).

FABRIC: 100% polyester.

Youth #389787 / S-XL / \$30.00 / Inseam: 5" (size medium)

DRI-FIT **MD** **Y**



MODIFIED UNIFORM OPTIONS



COLOR OPTIONS



See Uniform Builder at Niketeam.com or Team representative for order and delivery dates.

**MEN'S
SOCCER**

Modified Uniforms

379164 MEN'S DIGITAL SOCCER GAME JERSEY

\$80.00



SIZES: S, M, L, XL, 2XL

OFFER DATE: 06/01/10
END DATE: 06/01/13

3-5 WEEK DELIVERY UPON ORDER CONFIRMATION. Designed for the elite level athlete. New digitally printed and fully sublimated short-sleeve game jersey delivers the ultimate in Men's Soccer uniforms. Dri-FIT flat-back mesh provide for high performance game jersey. Fully customized jersey with the ability for a unique team name or logo placed at upper left front or center front depending on design selected. Left chest position can also be a number. Two Federation designs to choose from: US Slash Design or Brasil Dots Design. #3 Swoosh design trademark at right chest. Back name and number placement options are also available. **Exclusive order form required.** Body length: 30.375" (size large).

FABRIC: 100% polyester.

Youth #379151 / S-XL / \$75.00 / Body length: 24" (size medium)

DRI-FIT **MOD Y**



379167 MEN'S DIGITAL SOCCER GAME SHORT

\$60.00



SIZES: S, M, L, XL, 2XL

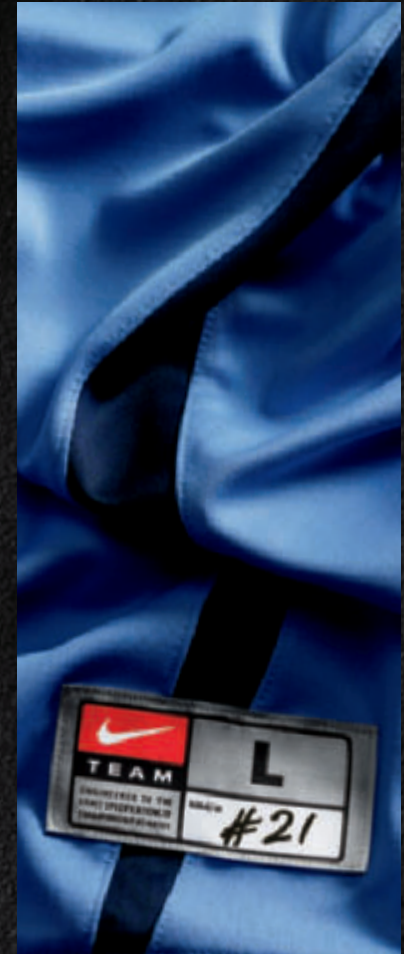
OFFER DATE: 06/01/10
END DATE: 06/01/13

3-5 WEEK DELIVERY UPON ORDER CONFIRMATION. Designed for the elite level athlete. New digitally printed and fully sublimated game short delivers the ultimate in Men's Soccer uniforms. Dri-FIT flat-back mesh provide for high performance game short. Fully customized short with the ability for a unique team logo number placed at right front. #3 Swoosh design trademark at left front. **Exclusive order form required.** Inseam: 7" (size large).

FABRIC: 100% polyester.

Youth #379154 / S-XL / \$55.00 / Inseam: 5" (size medium)

DRI-FIT **MOD Y**



**MEN'S
SOCCER**

Digital Quick-Turn Uniforms



396125 | MERCURIAL VAPOR VI FG \$240.00

SIZES: 6-13 OFFER DATE: 10/1

The ultimate lightweight performance boot built for speed. For use on firm to less firm natural surfaces.

UPPER: Soft, supple Teijin synthetic leather for supreme ball feel. Contoured speed last mirrors the foot shape. Lace cover increases ball contact area.

MIDSOLE: Contoured sockliner with EVA inserts reduces studs pressure.

OUTSOLE: Revolutionary adaptive traction technology provides extra grip when needed. Glass fiber composite chassis and direct-inject dual-density TPU studs.

080 Black/Circuit Orange-Black



396131 | MERCURIAL MIRACLE FG \$125.00

SIZES: 6-13 OFFER DATE: 10/1

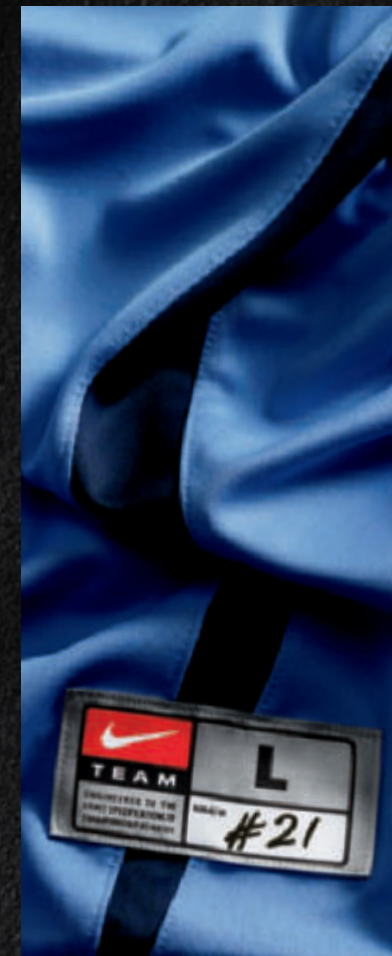
A lightweight performance boot for use on firm natural surfaces.

UPPER: Lightweight Teijin synthetic leather for supreme ball feel. Contoured speed last mirrors the foot shape. Traditional lacing system.

MIDSOLE: Contoured sockliner with EVA inserts reduces studs pressure.

OUTSOLE: Glass fiber composite heel chassis and direct-inject dual-density TPU studs. Super lightweight Vapor traction forefoot island.

080 Black/Crct Orange-Black-Total Orange



**MEN'S
SOCCER**

Footwear
Equipment



385403 | TOTAL90 STRIKE III FG \$100.00

SIZES: 6-13, 14 OFFER DATE: 10/1

Superior technology crafted for the player seeking value in fit, stability, traction, ball control and shooting accuracy.

UPPER: Performance-grade synthetic leather for lightweight comfort and touch. New shot shield provides both the instep and swerve kicking accuracy.

MIDSOLE: Molded EVA sockliner reduces stud pressure and provides contoured arch and heel support.

OUTSOLE: Lightweight TPU with optimized stud placement for traction and structural reinforcement for stability. For use on firm ground surfaces.

013 Black/White-Electric Green



385405 | TOTAL90 STRIKE III L-FG \$100.00

SIZES: 6-13, 14 OFFER DATE: 10/1

Superior technology crafted for the player seeking value in fit, stability, traction, ball control and shooting accuracy.

UPPER: Performance-grade leather for lightweight comfort and natural touch. New shot shield provides both the instep and swerve kicking accuracy.

MIDSOLE: Molded EVA sockliner reduces stud pressure and provides contoured arch and heel support.

OUTSOLE: Lightweight TPU with optimized stud placement for traction and structural reinforcement for stability. For use on firm ground surfaces.

100 Summit White/Black-Metallic Silver-Crimson



366201 | TIEMPO LEGEND III FG \$150.00

SIZES: 4-13, 14, 15 OFFER DATE: 10/1

New refinements elevate this staple soccer boot to the highest levels of craftsmanship. For use on firm ground surfaces.

UPPER: All-over Kangaroo leather for superior comfort and ball feel updated pattern details for a dependable performance fit.

MIDSOLE: High performance, molded sockliner with Poron® cushioning for great in-shoe comfort and fit.

OUTSOLE: Lightweight TPU with glass fiber shank, forefoot flex groove, and combination conical/bladed studs for optimal traction and pressure dispersion.

170 White/Volt-Black

018 Black/White-Metallic Gold



366180 | TIEMPO MYSTIC III FG \$65.00

SIZES: 6-13, 14 OFFER DATE: C/O

New look with the same natural comfort and performance for the serious player. For use on firm ground surfaces.

UPPER: Soft, full-grain leather with all new pattern details

MIDSOLE: High-density, recycled eva sockliner

OUTSOLE: Lightweight TPU plate with combination conical/bladed studs

170 White/Volt-Black

018 Black/White-Metallic Gold



SC1789 | T90 CATALYST \$70.00

SIZES: 5 **OFFER DATE:** C/O

DESIGN: Geometric Precision distributes pressure evenly across panels and around the ball for a consistent, accurate and powerful strike no matter where it's hit • Perfect Sphericity allows the ball to fly faster, farther, and more accurately

GRAPHIC: Asymmetrical High-Contrast Graphic creates an optimal flicker as the ball rotates for a more powerful visual signal allowing the player to more easily identify and track the ball

CASING: Premium PU casing for exceptional touch and feel

BLADDER: 6-wing carbon-latex air chamber for explosive acceleration

WARRANTY: 2 year stitch and shape guarantee

162 White/Red/(Black)



SC1794 | T90 PREMIER TEAM \$40.00

SIZES: 4, 5 **OFFER DATE:** C/O

DESIGN: Geo Balanced Technology allows for truer and more accurate flight

CASING: Hand-stitched high-quality PU

BLADDER: 6-wing latex bladder for strong rebound qualities and superior air retention

WARRANTY: 2 year stitch and shape guarantee

103 White/Black/(Black)



SC1792 | T90 CLUB TEAM \$25.00

SIZES: 3, 4, 5 **OFFER DATE:** C/O

DESIGN: Geo Balanced Technology for truer flight

CASING: Hand-stitched, grained PU for craftsmanship and durability

BLADDER: Butyl bladder for strong rebound and shape-retention qualities

WARRANTY: 2 year stitch and shape guarantee

105 White/Black/(Black)



SP0233 | MERCURIAL LITE \$20.00

SIZES: S, M, L, XL **OFFER DATE:** C/O

DESIGN: Low-Profile Construction provides protection while not distracting the athlete

BACKER: The Durable Low-Profile Shell is bonded to a dense foam backing for excellent impact diffusion and comfort against the skin

SLEEVE: NikeFIT Dry Fabric Sleeves are highly breathable and lightweight, designed to hold the guard secure against the shin

FIT: Anatomical left and right design is engineered and tested to fit the contour of the leg

008 Black/Orange/(White)



SP0227 | T90 PROTEgg A \$20.00

SIZES: S, M, L, XL **OFFER DATE:** C/O

DESIGN: Ventilated Shell and Extended Foam allow maximum protection plus cool airflow • Compound Shell curvature ensures a comfortable horizontal and vertical fit on leg Anatomical Left/Right Design is contoured for a better fit

ANKLE PROTECTION: Lightweight detachable ankle guard with boot shape integration provides additional protection and heel comfort

STRAPPING: Micro and Macro adjustment strapping system offers a customized and secure fit

095 Anthracite/Orange/(White)

137 White/Silver/(Black)





GS0236 | NIKE GK GUNN CUT \$90.00

SIZES: 6, 7, 8, 9, 10, 11, 8.5, 9.5, 10.5 **OFFER DATE:** C/O

WRIST: Flexible Fit Wraparound Tunnel Wristband for a comfortable fit that is easy to adjust

GRIP: Extended 4 mm Contact Foam Palm absorbs shot impact and offers superior grip and control in all conditions

DESIGN: Pre-Curved Fingers positions the hands in a catch-ready position. Gunn Cut Construction with rolled foam fingers for better grip and feel.

063 Black/Crimson/White



GS0230 | NIKE GK SPYNE PRO \$70.00

SIZES: 6, 7, 8, 9, 10, 11 **OFFER DATE:** C/O

WRIST: Wraparound Wristband for a comfortable fit that is easy to adjust

GRIP: 3 mm Super-Soft Latex Foam absorbs shot impact and enhances grip

DESIGN: Pre-Curved Bio-Align Technology positions the hands in a catch-ready position, and reduces stress on the hands

PROTECTION: T90 Spyne Finger Supports for enhanced shot-blocking and stability

063 Black/Crimson/White



BA3211 | ELITE UTILITY DUFFEL \$55.00

SIZES: MISC **OFFER DATE:** 1/1

600D Polyester with PU face / TPU Back • Tarpaulin • Multiple carry ways - Backpack, Shoulder, Brief • Wet/Dry separation • Shoe compartment / Storage • Interior pocket protection / Personal items • Dual zippered main compartment • Rain-flap pocket protection / Keeps contents dry • Side pockets / Easy access to contents • Side carry handle • Screened Swoosh design trademark

DIMENSIONS: 20Lx11Wx12H inch/2899 cu.inch

067 Black/Black/White



BA2625 | TEAM SALES NUTMEG BACKPACK \$40.00

SIZES: MISC **OFFER DATE:** C/O

600D Polyester • Ball pocket/Additional storage • Mesh water bottle pocket / Additional storage • Wet/dry pocket / Storage • Interior hanging small items pocket / Securely stores personal items • Custom Hardware • Screened Swoosh design trademark • Limited lifetime guarantee

DIMENSIONS: 19"H x 16"W x 8"D / 2257 cu. in.

067 Black/Black/White

074 Flint Grey/Black/White

472 Midnight Navy/Black/White

479 Varsity Royal/Black/White

624 Varsity Red/Black/White