



CONTENTS

MEN'S & BOYS'

APPAREL / FOOTWEAR / EQUIPMENT

BASEBALL

- 4 Stock Uniforms
- 11 Modified Uniforms
- 17 Varsity Custom Uniforms
- 19 Elite Custom Uniforms
- 26 Footwear
- 30 Equipment

LACROSSE

- 34 Stock Apparel
- 37 Sublimated Uniforms
- 38 Modified Uniforms
- 40 Custom Uniforms
- 45 Footwear
- 46 Equipment

SOCCER

- 48 Stock Apparel
- 63 Modified Uniforms
- 64 Digital Quick-Turn Uniforms
- 65 Footwear
- 67 Equipment

TRACK & FIELD

- 70 Stock Apparel
- 72 Sublimated Uniforms
- 75 Footwear

BASKETBALL

- 79 Stock Apparel
- 84 Modified Uniforms
- 86 Footwear
- 87 Equipment

TENNIS

- 88 Apparel
- 90 Footwear

DIGITAL QUICK-TURN

- 91 Soccer
- 92 Basketball
- 94 Lacrosse
- 94 Wrestling

TRAINING

- 97 7 on 7
- 99 Nike Pro Apparel
- 107 Fundamentals
- 120 Coaches
- 124 Footwear

HEADWEAR

- 126 Stock

INFORMATION

See Women's Content Page

Coast to Coast Coverage since 1980





MEN'S BASEBALL

MODIFIED PLATINUM JERSEY

399215 It's game day and your team is sure to be at their best in this short-sleeve stretch poly warp knit full button game jersey.



Optional pipe/braid available on sleeve hem and front/neck placket

Heat transfer

Ability to contrast mesh sleeves and under arm inserts for a unique look

Nike Team Sports jock tag on lower hem

MODIFIED PLATINUM PANT

399213 Stretch poly warp knit open bottom hem baseball pant with reinforced knees for durability.



Open bottom hem

Performance seven-belt loop system with gripper elastic waistband

Two back pockets

Embroidered Swoosh design trademark



MAX DIAMOND ELITE FLY

414985 A new era begins with an emphasis on moving the feet quicker.



DIAMOND ELITE SHOW 1150 GLOVE

BF1364 New Premier Diamond Elite Leather has quick break in and form that lasts.



AERO FUSE BESR -3 BAT

BT0601 2-piece, ultra-high performance adult baseball bat.



NPC HYPERSTRONG COMPRESSION 17" VIS SLIDER

395554 Abrasion resistant fabric on outside legs for increased protection and durability.

399209 BP GAME JERSEY**\$37.00***

SIZES: S, M, L, XL, 2XL
 *15% upcharge for 3XL

OFFER DATE: 12/01/10
 END DATE: 12/01/13

Dri-FIT double knit flat back mesh short sleeve jersey. Two button front placket, self-fabric piping on sleeve hem, contrast self-fabric under arm. Embroidered Swoosh design trademark on lower left sleeve. Nike Team Sports jock tag at lower left hem. Body length: 31.5" (size large).

FABRIC: 100% polyester.

012 Black/White/(White)	100 White/White/(Black)	106 White/Black/(Black)
107 White/Navy/(Navy)	109 White/Scarlet/(Scarlet)	342 Dark Green/White/(White)
420 Navy/White/(White)	494 Royal/White/(White)	612 Cardinal/White/(White)
658 Scarlet/White/(White)		

Youth #399210 / S-XL / \$30.00 / Body length: 23" (size medium).

NEW DRI-FIT 

**299401 PHENOM PLAYERS PANT****\$55.00***

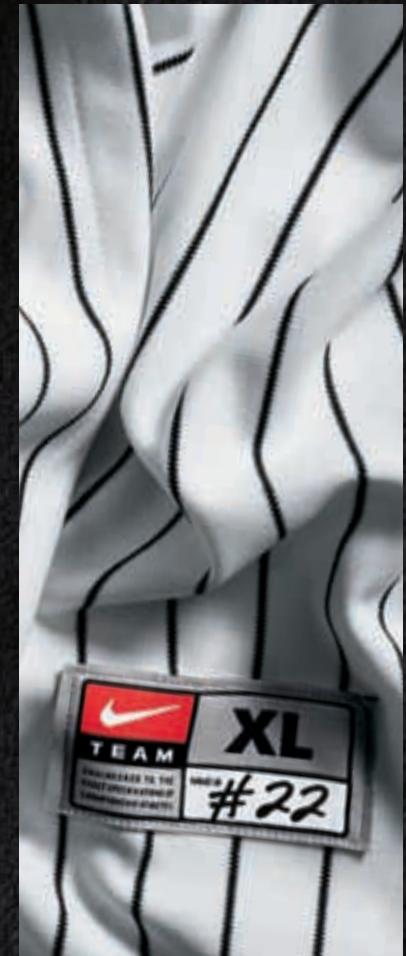
SIZES: S, M, L, XL, 2XL
 *15% upcharge for 3XL

OFFER DATE: 12/01/08
 END DATE: 12/01/11

Poly warp knit baseball pant with reinforced knees for durability, brass zipper, two metal snap closures, two back pockets and performance 7-belt loop system. Unhemmed 37" inseam with open leg. Swoosh design trademark at upper right back hip.

FABRIC: 100% polyester.

052 Blue Grey/(Black)	100 White/(Black)
-----------------------	-------------------



**MEN'S
 BASEBALL**

Stock Uniforms

359727 ACE MESH HENLEY**\$30.00***

SIZES: S, M, L, XL, 2XL
 *15% upcharge for 3XL

OFFER DATE: 12/01/09
 END DATE: 12/01/12

Great lightweight all-over fabric allowing for ultimate breathability with contrast set-on white taping on the sleeve hems and two-button center front placket. Nike Team Sports jock tag at lower left front hem. Embroidered Swoosh design trademark on left sleeve. Body length: 34" (size large).

FABRIC: 100% polyester.

012 Black/White/(White)	100 White/White/(Black)	342 Dark Green/White/(White)
420 Navy/White/(White)	494 Royal/White/(White)	546 Purple/White/(White)
612 Cardinal/White/(White)	658 Scarlet/White/(White)	

Youth #359912 / S-XL / \$25.00 / Body length: 25" (size medium)

Y

**359915 OREGON ELITE PANT****\$55.00***

SIZES: S, M, L, XL, 2XL
 *15% upcharge for 3XL

OFFER DATE: 12/01/09
 END DATE: 12/01/12

Poly warp-knit baseball pant with reinforced articulation in the knee for durability, two set-in back pockets, brass zipper, metal snaps and an angled belt loop system. Gripper elastic at waistband and leg opening. Contrast side insets. Swoosh design trademark on upper left back pocket. Inseam: 31" (size medium).

FABRIC: 100% polyester.

052 Blue Grey/Blue Grey/(Black)	053 Blue Grey/Scarlet/(Scarlet)	056 Blue Grey/Navy/(Navy)
058 Blue Grey/Black/(Black)	100 White/White/(Black)	106 White/Black/(Black)
107 White/Navy/(Navy)	109 White/Scarlet/(Scarlet)	



299419 ELITE HENLEY

\$43.00*

SIZES: S, M, L, XL, 2XL
*15% upcharge for 3XL

OFFER DATE: 12/01/08
END DATE: 12/01/11

Dri-FIT fabric Henley with two-button placket. Swoosh design trademark on left sleeve. Body length: 34" (size large).

FABRIC: 100% polyester.

012 Black/White/(White)	100 White/White/(Black)	342 Dark Green/White/(White)
420 Navy/White/(White)	494 Royal/White/(White)	612 Cardinal/White/(White)
658 Scarlet/White/(White)		

DRI-FIT 



399211 LIGHTS OUT GAME PANT

\$40.00*

SIZES: S, M, L, XL, 2XL
*15% upcharge for 3XL

OFFER DATE: 12/01/10
END DATE: 12/01/13

Poly warp knit baseball pant with reinforced knees for durability, brass zipper, two metal snap closures, two back welt pockets and a seven-belt loop system. Gripper elastic waistband and a 9" bottom hem opening. Embroidered Swoosh design trademark at upper left hip. Inseam: 32" (size large).

FABRIC: 100% polyester.

010 Black/(White)	052 Blue Grey/(Black)	100 White/(Black)
419 Navy/(White)		

Youth #399212 / S-XL / \$30.00 / Inseam: 25.75" (size medium)



433398 LIGHTS OUT GAME PANT PIPED

\$45.00*

SIZES: S, M, L, XL, 2XL
*15% upcharge for 3XL

OFFER DATE: 12/01/10
END DATE: 12/01/13

Poly warp knit baseball pant with reinforced knees for durability, brass zipper, two metal snap closures, two back welt pockets and a seven-belt loop system. Gripper elastic waistband and a 9" bottom hem opening. Embroidered Swoosh design trademark at upper left hip. Inseam: 32" (size large).

FABRIC: 100% polyester.

053 Blue Grey/Scarlet/(Scarlet)	056 Blue Grey/Navy/(Navy)	058 Blue Grey/Black/(Black)
106 White/Black/(Black)	107 White/Navy/(Navy)	109 White/Scarlet/(Scarlet)

Youth #433397 / S-XL / \$40.00 / Inseam: 25.75" (size medium)



299406 TEAM TECH FLEECE CREW**\$46.00***

SIZES: S, M, L, XL, 2XL
 *15% upcharge for 3XL, 4XL

OFFER DATE: 12/01/08
END DATE: 12/01/11

Performance fleece pull-over with trim at neck, sleeve and hem. Unique armhole design and rib side panels. Embroidered Swoosh design trademark on center front chest. Body length: 29" (size large).

FABRIC: 76% cotton/24% polyester.

010 Black/(White)	057 Pewter/(Black)	341 Dark Green/(White)
419 Navy/(White)	493 Royal/(White)	610 Cardinal/(White)
657 Scarlet/(White)	669 Dark Maroon/(White)	

DRI-FIT

**319725 PHENOM PLAYERS PANT - PIPED****\$60.00***

SIZES: S, M, L, XL, 2XL
 *15% upcharge for 3XL

OFFER DATE: 12/01/08
END DATE: 12/01/11

Poly warp knit baseball pant with reinforced knees for durability, brass zipper, two metal snap closures, two back pockets and performance 7-belt loop system. Unhemmed 37" inseam with open leg and 1/4" contrast piping. Swoosh design trademark at upper right back hip.

FABRIC: 100% polyester.

053 Blue Grey/Scarlet/(Black)	056 Blue Grey/Navy/(Black)	058 Blue Grey/Black/(Black)
106 White/Black/(Black)	107 White/Navy/(Black)	109 White/Scarlet/(Black)



299414 FULL-BUTTON MESH JERSEY**\$40.00*****SIZES:** 2XS, XS, S, M, L, XL, 2XL
*15% upcharge for 3XL**OFFER DATE:** 12/01/08
END DATE: 12/01/11

Double-knit full-button jersey with optimized tapered fit. Nike Team Sports jock tag at lower left hem and Swoosh design trademark on left sleeve. Body length: 34" (size large).

FAB RIC: 100% polyester.

010 Black/(White)	100 White/(Black)	341 Dark Green/(White)
419 Navy/(White)	493 Royal/(White)	610 Cardinal/(White)
657 Scarlet/(White)		

**299415 FULL-BUTTON MESH VEST****\$38.00*****SIZES:** 2XS, XS, S, M, L, XL, 2XL
*15% upcharge for 3XL**OFFER DATE:** 12/01/08
END DATE: 12/01/11

Double-knit full-button vest with optimized tapered fit. Nike Team Sports jock tag at lower left hem and Swoosh design trademark at upper center back. Body length: 34" (size large).

FAB RIC: 100% polyester.

010 Black/(White)	100 White/(Black)	341 Dark Green/(White)
419 Navy/(White)	493 Royal/(White)	610 Cardinal/(White)
657 Scarlet/(White)		

**378362 NIKE CORE BASEBALL PANT****\$25.00*****SIZES:** S, M, L, XL, 2XL
*15% upcharge for 3XL**OFFER DATE:** 12/01/09
END DATE: 12/01/12

Poly warp knit baseball pant with reinforced knees for durability, brass zipper, two metal snap closures, two back pockets and performance five-belt loop system. Elastic leg opening and Swoosh design trademark at upper right back hip. Inseam: 29.5" (size large).

FAB RIC: 100% polyester.

010 Black/(White)	052 Blue Grey/(Black)	100 White/(Black)
-------------------	-----------------------	-------------------

Youth #378363 / S-XL / \$20.00 / Inseam: 22.5" (size medium)

Y

269758 NIKE PRO PLAYERS TOP**\$60.00**

SIZES: S, M, L, XL, 2XL

OFFER DATE: 12/01/08

END DATE: 12/01/11

Offering the perfect balance of zoned thermal compression and ventilation to keep your throwing muscles warm and the rest of your body comfortable. Using seamless compression technology, the Nike Pro Players Top has engineered zones of thermal compression in the shoulder and on the elbow, where the arm takes most of its abuse during the throwing motion. Using body mapping technology, the Nike Pro Players Top also offers zoned cooling. Strategic areas on the back of the garment and in key areas of the arm utilize NikeFIT technology to manage moisture, keeping the player cool, comfortable and performing at the highest level. Body length: 27" (size large).

Fab Ric: Body: 59% nylon/30% polyester/11% spandex. Sleeve: 79% polyester/11% nylon/10% spandex.

010 Sport Grey Heather/Black/(White) **419** Sport Grey Heather/Navy/(White) **493** Sport Grey Heather/Royal/(White)

648 Sport Grey Heather/Scarlet/(White)

DRI-FIT

**395554 NPC HYPERSTRONG COMPRESSION 17" VIS SLIDER****\$55.00***

SIZES: S, M, L, XL, 2XL

OFFER DATE: 09/01/10

*15% upcharge for 3XL

END DATE: 06/01/13

Nike Pro Combat Compression Short with abrasion resistant fabric on outside legs for increased protection and durability when sliding and structured foam cells in strategic knee impact zones. Strategically placed flat-lock seams and mesh lined cup pocket. Swoosh design trademark at middle left leg. Inseam 17" (size large).

Fab Ric: 82% polyester/18% spandex.

100 White/Cool Grey/(Black)

NEW DRI-FIT **COMPRESSION**

**299398 NPC HYPERSTRONG HEIST SLIDER****\$30.00***

SIZES: S, M, L, XL, 2XL

OFFER DATE: 12/01/08

*15% upcharge for 3XL

END DATE: 12/01/11

Nike Pro form fitting short. Dri-FIT fabric mesh side panels. Strategically placed padding for protection when sliding. Double-layer mesh cup pocket designed to maximize comfort. Swoosh design trademark at lower left thigh. Inseam: 10.5" (size large).

Fab Ric: Body: 100% polyester. Insets: 90% polyester/10% spandex.

100 White/Flint Grey/(Flint Grey)

Youth #299400 / S-XXL / \$25.00 / Inseam: 6.5" (size medium)

DRI-FIT **Y**



359725 WHEELHOUSE L/S JACKET**\$65.00***

SIZES: S, M, L, XL, 2XL
 *15% upcharge for 3XL

OFFER DATE: 12/01/09
END DATE: 12/01/12

Clima-FIT fabric long-sleeve jacket with front pockets, bottom toggles for adjustability and mesh ventilation under arms for breathability. Quarter-zip pull-over with Swoosh design trademark at upper right chest. Body length: 31" (size large).

FABRIC: 100% polyester.

250 Flint Grey/Black/(White)	251 Flint Grey/Dark Green/(White)	252 Flint Grey/Navy/(White)
253 Flint Grey/Royal/(White)	254 Flint Grey/Purple/(White)	255 Flint Grey/Cardinal/(White)
256 Flint Grey/Scarlet/(White)		

**359724 WHEELHOUSE S/S JACKET****\$55.00***

SIZES: S, M, L, XL, 2XL
 *15% upcharge for 3XL

OFFER DATE: 12/01/09
END DATE: 12/01/12

Clima-FIT fabric short-sleeve jacket with front pockets, bottom toggles for adjustability and mesh ventilation under arms for breathability. Quarter-zip pull-over with Swoosh design trademark at upper right chest. Body length: 31" (size large).

FABRIC: 100% polyester.

230 Black/Flint Grey/(White)	231 Dark Green/Flint Grey/(White)	232 Navy/Flint Grey/(White)
233 Royal/Flint Grey/(White)	234 Purple/Flint Grey/(White)	236 Scarlet/Flint Grey/(White)
237 Cardinal/Flint Grey/(White)		



PLATINUM JERSEY

See below*



SIZES: S, M, L, XL, 2XL
*15% upcharge for 3XL

OFFER DATE: 12/01/10
END DATE: 12/01/13

It's game day and your team is sure to be at their best in this short sleeve poly warp knit full button game jersey. Ability to contrast mesh sleeves and under arm insets can give a unique on field look. Braiding is optional on lower sleeve hems. Embroidered Swoosh design trademark at upper left chest. Nike Team Sports jock tag at lower left hem. Body length: 33.5" (size large).

FAB RIC: Body: 85% polyester/15% spandex. Sleeve: 100% polyester.

399215	Blank	\$60.00*
269941	One-color twill Name/Number Split Front	\$50.00*
269942	Two-color twill Name/Number Split Front	\$70.00*
436077	One-color lightweight twill split front	\$70.00*
436078	Two-color lightweight twill split front	\$80.00*
269945	Arm Cuff - Braid/Piping	\$10.00*
269946	Neck/Placket - Braid/Piping	\$30.00*

DRI-FIT MOD



PLATINUM PANT

See below*



SIZES: S, M, L, XL, 2XL
*15% upcharge for 3XL

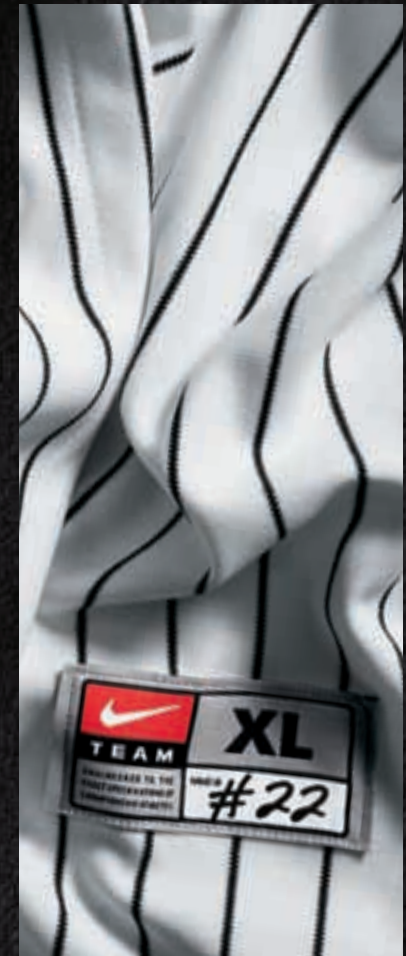
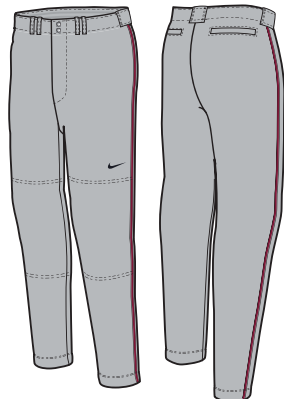
OFFER DATE: 12/01/10
END DATE: 12/01/13

Poly warp knit open bottom hem baseball pant with reinforced knees for durability, brass zipper, two metal snap closures, two back pockets and performance seven-belt loop system. Silicone gripper elastic waistband to help keep jerseys tucked in. Embroidered Swoosh design trademark at upper left leg. Inseam: 32" (size large) with +2" or +4" inseam options.

FAB RIC: 85% polyester/15% spandex.

399213	Blank	\$70.00*
269947	Braid/Piping	\$14.00*

MOD



MEN'S

BASEBALL

Modified Uniforms

RALLY JERSEY

See below*



SIZES: S, M, L, XL, 2XL
*15% upcharge for 3XL

OFFER DATE: 12/01/09
END DATE: 12/01/13

Two-button Dri-FIT fabric baseball jersey. Contrast stitching to team color side inserts. Nike Team Sports jock tag at lower left front hem. Swoosh design trademark at lower left sleeve hem. Body length: 33" (size large).

FABRIC: Body: 100% polyester.

359726	Blank	\$48.00*
359555	One-color screen print	\$16.00*
359556	Two-color screen print	\$26.00*
330089	One-color twill	\$26.00*
330090	Two-color twill	\$36.00*
409637	One-color lightweight twill	\$36.00*
409638	Two-color lightweight twill	\$44.00*

DRI-FIT MOD



LONGHORN TWO-BUTTON SLEEVELESS JERSEY

See below*



SIZES: S, M, L, XL, 2XL
*15% upcharge for 3XL

OFFER DATE: 12/01/09
END DATE: 12/01/12

Two-button sleeveless open-hole mesh baseball jersey. Nike Team Sports jock tag at lower left front hem. Swoosh design trademark at upper left chest. Body length: 33.5" (size large).

FABRIC: 100% polyester.

359919	Blank	\$40.00*
359555	One-color screen print	\$16.00*
359556	Two-color screen print	\$26.00*
330089	One-color twill	\$26.00*
330090	Two-color twill	\$36.00*
409637	One-color lightweight twill	\$36.00*
409638	Two-color lightweight twill	\$44.00*
269945	Arm Cuff - Braid/Piping	\$10.00*

MOD



WALK-OFF JERSEY

See below*



SIZES: S, M, L, XL, 2XL
*15% upcharge for 3XL

OFFER DATE: 12/01/07
END DATE: 12/01/13

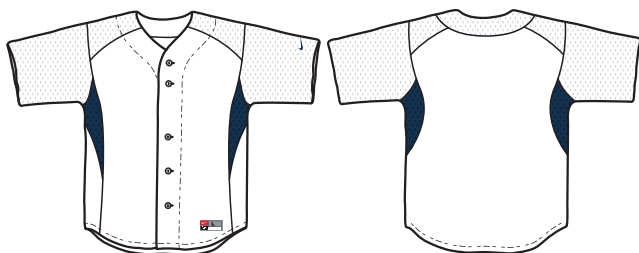
Full-button jersey with flat-back mesh placed on sleeve and shoulder for optimal ventilation, superior comfort and flexibility. Nike Team Sports jock tag at lower left hem and Swoosh design trademark on left sleeve. Body length: 34" (size large).

FABRIC: 100% polyester.

243390	Blank	\$40.00*
269941	One-color twill Name/Number Split Front	\$50.00*
269942	Two-color twill Name/Number Split Front	\$70.00*
269945	Arm Cuff - Braid/Piping	\$10.00*
269946	Neck/Placket - Braid/Piping	\$30.00*

Youth #243399 / S-XL / \$35.00 / Body length: 25" (size medium) / Blank

MOD Y



CONVENTIONAL PANT

See below*



SIZES: S, M, L, XL, 2XL
*15% upcharge for 3XL

OFFER DATE: 12/01/07
END DATE: 12/01/12

Baseball pant with reinforced knees for durability, brass zipper, two metal snap closures, back pocket and performance belt loop system. Elastic leg opening and Swoosh design trademark at upper right back hip. Inseam: 29" (size large) with +2" or +4" inseam options (adult only).

FABRIC: 100% polyester.

243543	Blank	\$40.00*
269947	Braid/Piping	\$14.00*

Youth #243404 / S-XL / \$30.00 / Inseam: 21.25" (size medium) / Blank

MOD Y



FULL-BUTTON JERSEY

See below*



SIZES: S, M, L, XL, 2XL
*15% upcharge for 3XL

OFFER DATE: 12/01/07
END DATE: 12/01/12

Double-knit full-button jersey with optimized tapered fit. Nike Team Sports jock tag at lower left hem. Swoosh design trademark on left sleeve. Body length: 34" (size large).

FABRIC: Solid: 100% polyester. Pinstripe: 94% polyester/6% nylon.

243391	Blank	\$38.00*
269941	One-color twill Name/Number Split Front	\$50.00*
269942	Two-color twill Name/Number Split Front	\$70.00*
269945	Arm Cuff - Braid/Piping	\$10.00*
269946	Neck/Placket - Braid/Piping	\$30.00*

Youth #243400 / S-XL / \$30.00 / Body length: 25" (size medium) / Blank

MOD Y



FULL-BUTTON VEST

See below*



SIZES: S, M, L, XL, 2XL
*15% upcharge for 3XL

OFFER DATE: 12/01/07
END DATE: 12/01/12

Double-knit full-button vest with optimized tapered fit. Nike Team Sports jock tag at lower left hem. Swoosh design trademark at center back neck. Body length: 34" (size large).

FABRIC: Solid: 100% polyester. Pinstripe: 94% polyester/6% nylon.

243392	Blank	\$35.00*
269941	One-color twill Name/Number Split Front	\$50.00*
269942	Two-color twill Name/Number Split Front	\$70.00*
269946	Neck/Placket - Braid/Piping	\$30.00*

Youth #243401 / S-XL / \$28.00 / Body length: 25" (size medium) / Blank

MOD Y



FULL-BUTTON MESH JERSEY

See below*



SIZES: S, M, L, XL, 2XL
*15% upcharge for 3XL

OFFER DATE: 12/01/07
END DATE: 12/01/11

Double-knit full-button jersey with optimized tapered fit. Nike Team Sports jock tag at lower left hem. Swoosh design trademark on left sleeve. Body length: 34" (size large).

FAB RIC: 100% polyester.

243393	Blank	\$40.00*
269941	One-color twill Name/Number Split Front	\$50.00*
269942	Two-color twill Name/Number Split Front	\$70.00*
269945	Arm Cuff - Braid/Piping	\$10.00*
269946	Neck/Placket - Braid/Piping	\$30.00*

MOD



FULL-BUTTON MESH VEST

See below*



SIZES: S, M, L, XL, 2XL
*15% upcharge for 3XL

OFFER DATE: 12/01/07
END DATE: 12/01/11

Double-knit full-button vest with optimized tapered fit. Nike Team Sports jock tag at lower left hem. Swoosh design trademark at center back neck. Body length: 34" (size large).

FAB RIC: 100% polyester.

243394	Blank	\$38.00*
269941	One-color twill Name/Number Split Front	\$50.00*
269942	Two-color twill Name/Number Split Front	\$70.00*
269946	Neck/Placket - Braid/Piping	\$30.00*

MOD



ELITE MESH HENLEY

See below*



SIZES: S, M, L, XL, 2XL
*15% upcharge for 3XL

OFFER DATE: 12/01/07
END DATE: 12/01/12

Dri-FIT fabric mesh henley with two-button placket. Open-hole mesh fabrication at lower back hem for optimal ventilation. Swoosh design trademark on left sleeve. No piping or braid options available for this silhouette. Body length: 34" (size large).

FAB RIC: 100% polyester.

243389	Blank	\$43.00*
359555	One-color screen print	\$16.00*
359556	Two-color screen print	\$26.00*
330089	One-color twill	\$26.00*
330090	Two-color twill	\$36.00*
409637	One-color lightweight twill	\$36.00*
409638	Two-color lightweight twill	\$44.00*

Youth #243402 / S-XL / \$35.00 / Body length: 25" (size medium) / Blank

DRI-FIT MOD Y



BASEBALL AND FAST PITCH MODIFIED OPTIONS



PIPING AND BRAID COLOR OPTIONS



PIPING AND BRAID OPTIONS



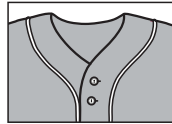
1 color/solid
(1/8" or 3/8" width)



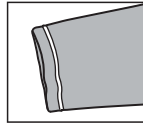
1 color/solid
2 color/3 stripes
(3/8" width)

PIPING AND BRAID PLACEMENTS

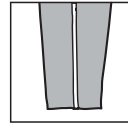
*Please refer to price sheet with body and insert options



Placket



Sleeve



Pant

FONT APPLICATIONS

- 4" front letters (5 letters or less)
- 3" front letters (6-10 letters)
- Scaled names (5" max letter height)
- 4" front numbers
- 8" back numbers
- 9" maximum lettering space
- No nameplates or player names

TIGERS

Straight

Wildcats

Script w/ Tail

Wildcats

Script w/o Tail

EAGLES

Vertical Arch

ARIZONA

Padres Style Arch

BC

Step Down

B

Single 6" Letter
(Men's Only)

FONTS

BRUSH SCRIPT - 1 or 2 color tackle twill

ABCDEFGHIJKLMNOPQRSTUVWXYZ

LOWER CASE SCRIPT - 1 or 2 color tackle twill

abcdefghijklmnopqrstuvwxyz

KANSAS - 1 or 2 color tackle twill

ABCDEFGHIJKLMNOPQRSTUVWXYZ

FULL BLOCK - 1 or 2 color tackle twill

ABCDEFGHIJKLMNOPQRSTUVWXYZ

CAXTON ROMAN - 1 or 2 color tackle twill

ABCDEFGHIJKLMNOPQRSTUVWXYZ

ATHLETIC SHADOW - 1 or 2 color tackle twill

ABCDEFGHIJKLMNOPQRSTUVWXYZ

DADE BOLD - 1 or 2 color tackle twill (No Arched Options)

ABCDEFGHIJKLMNOPQRSTUVWXYZ

COUGARS - 1 or 2 color tackle twill (No Arched Options)

ABCDEFGHIJKLMNOPQRSTUVWXYZ

FULL BLOCK - 1 or 2 color tackle twill

0123456789

CAXTON - 1 or 2 color tackle twill

0123456789

KANSAS - 1 or 2 color tackle twill

0123456789

ATHLETIC SHADOW - 1 or 2 color tackle twill

0123456789

DADE BOLD - 1 or 2 color tackle twill

1234567890

COUGARS - 1 or 2 color tackle twill

0123456789

PRICING

- 359555 – One-color screen print: \$16.00
- 359556 – Two-color screen print: \$26.00
- 330089 – One-color twill: \$26.00
- 330090 – Two-color twill: \$36.00
- 409637 – One-color lightweight twill: \$36.00
- 409638 – Two-color lightweight twill: \$44.00
- 269941 – One-color twill Name/Number split front: \$50.00
- 269942 – Two-color twill Name/Number split front: \$70.00
- 436077 – One-color lightweight twill split front: \$70.00
- 436078 – Two-color lightweight twill split front: \$80.00
- +2" extra length: \$1.50
- +4" extra length: \$3.00

SHOW TEAM FULL-BUTTON JERSEY



SIZES: S, M, L, XL, 2XL

3-4 week delivery of Varsity products upon order confirmation.

JERSEY OPTIONS:

- 1/8" button front piping
- 1/2" button front braid placed like piping
- 1/2" button front braid (2 rows)
- 1/8" sleeve end piping (set 1/2" or 1" up from sleeve end)
- 1" sleeve end braid
- 1/8" piping set below raglan sleeve seam
- 1/2" braid set on neckline
- Lettering: Tackle twill only. Any standard font or arrangement on the front. Numbers front and back only. No lettering on sleeves.

NLGM07314 100% poly warp knit in white and grey

217782 Nylon/cotton plaited in white and grey

CUSTOM

SHOW TEAM CONVENTIONAL PANT



SIZES: S, M, L, XL, 2XL

3-4 week delivery of Varsity products upon order confirmation.

Non-roll elastic waistband with belt loops. Lined knees, two back set in pockets and cover-stitched seams.

PANT OPTIONS:

- 1/8" side piping
- 1/2" side braid
- 1" side braid
- Inseam: 27" (on waist sizes S, 28, 30)
- Inseam: 29" (on waist sizes M-2XL, 34, 36, 38, 40, 42, 44)
- Hemmed bottom with rubberband (on extra length option)
- Hemmed bottom without rubberband (on extra length option)

NPKN07316 Standard length: Poly warp knit in white and grey

217791 Standard length: Nylon/cotton plaited in white and grey

217794 Extra-length: Poly warp knit in white and grey - 31", 33" or 35" inseam

218392 Extra-length: Nylon/cotton plaited white and grey - 31", 33" or 35" inseam

CUSTOM



MEN'S

BASEBALL

Varsity Custom Uniforms

SHOW TEAM FULL-BUTTON VEST

SIZES: S, M, L, XL, 2XL

3-4 week delivery of Varsity products upon order confirmation.

VEST OPTIONS:

- 1/8" button front piping
- 1/2" button front braid placed like piping
- 1/2" button front braid (2 rows)
- 1/8" armhole piping set-in 1/2"
- 1/2" armhole braid set-in 1/2"
- 1/2" braid set on neckline
- Lettering: Tackle twill only. Any standard font or arrangement on the front. Numbers front and back only.

NWVT07315 100% poly warp knit in white and grey

218407 Nylon/cotton plaited in white and grey

CUSTOM



ACE MESH HENLEY



SIZES: S, M, L, XL, 2XL
*15% upcharge for 3XL

Mesh henley with two-button placket. Open-hole mesh fabrication at lower back hem for optimal ventilation. Swoosh design trademark on left sleeve. Body length: 34" (size large). +2" or +4" extra length options.

406853 Flat-back mesh

406854 Pro mesh

CUSTOM



LONGHORN TWO-BUTTON SLEEVELESS JERSEY



SIZES: S, M, L, XL, 2XL
*25% upcharge for 3XL

Two-button sleeveless pull-over baseball jersey with two-button front placket. Swoosh design trademark at upper left chest.

JERSEY OPTIONS:

- No trim, 1/8" or 1/2" trim along armhole

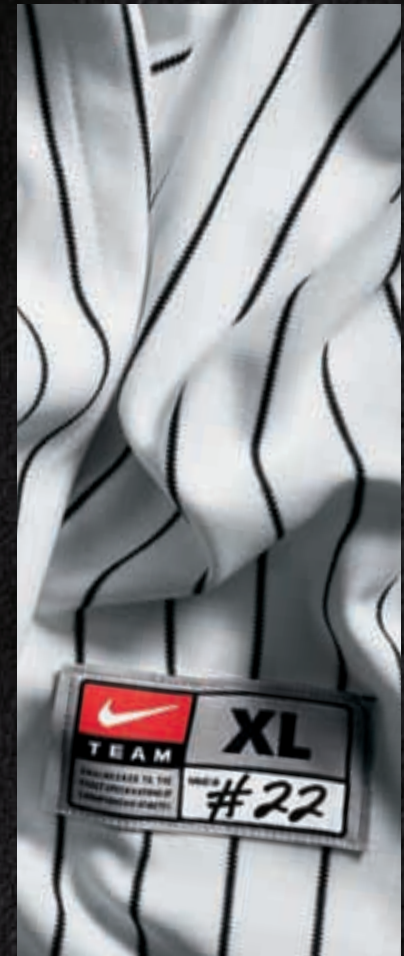
359920 Poly mesh

379535 Poly warp knit

379536 Nylon stretch fit

379537 Flat-back mesh

CUSTOM



MEN'S

BASEBALL

Elite Custom Uniforms

359918 ELITE OREGON JERSEY



SIZES: S, M, L, XL, 2XL
*25% upcharge for 3XL

Full-button front game jersey with 3/8" shoulder and side seam inserts. Pro mesh side and under arm inserts. Back of jersey features vertical darts for enhanced fit. Swoosh design trademark at upper right chest.

Nylon stretch fit

CUSTOM



ELITE FULL-BUTTON JERSEY



SIZES: S, M, L, XL, 2XL
*25% upcharge for 3XL

Full-button front jersey with cover-stitched seams and curved Raglan sleeves.

JERSEY OPTIONS:

- Solid colors or pinstripes
- 1/8" button front braid
- 1/2" button front braid placed like piping
- 1/2" braid set-up from sleeve end
- 1/8" piping set-up from sleeve end
- 1" sleeve end trim
- 1/8" piping set below raglan sleeve seam
- 1/2" braid set-on neckline
- Name plaques
- +2" or +4" extra length
- *Pictured with optional piping*

NLGM01640	Solid colors - Poly warp knit
NLGM03121	White with pinstripes
NLGM03120	Grey with pinstripes
NLGM03114	Solid color - Medium-weight nylon stretch fit
NLGM03116	White with pinstripes - Medium-weight nylon stretch fit
NLGM03115	Grey with pinstripes - Medium-weight nylon stretch fit
NLGM04450	Nylon pro mesh with raglan sleeves
NLGM01636	Nylon pro mesh with set-in sleeves
252188	Pro brite solid with raglan sleeves

CUSTOM

ELITE CONVENTIONAL PANT



SIZES: S, M, L, XL, 2XL
*25% upcharge for 3XL

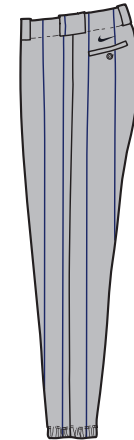
Non-roll elastic waistband with belt loops, two-ply knees, two back set in pockets, left side with button closure and cover-stitched seams.

PANT OPTIONS:

- Solid colors or pinstripes
- 1/8" side piping (not available on pinstripe)
- 1/2" side braid
- 1" side braid
- 1 1/2" side braid
- Braves-style belt loop braid
- +2", +4" or +6" extra length (extra length limitations on nylon pinstripe)
- *Pictured with optional piping*

NPKN01648	Solid colors - Poly warp knit
NPKN03111	White with pinstripes
NPKN03110	Grey with pinstripes
NPKN03106	Solid colors - Medium-weight nylon stretch fit
NPKN03109	White with pinstripes - Medium-weight nylon stretch fit
NPKN03108	Grey with pinstripes - Medium-weight nylon stretch fit
NPKN03104	Heavyweight nylon stretch fit

CUSTOM



ELITE FULL-BUTTON VEST

SIZES: S, M, L, XL, 2XL
 *25% upcharge for 3XL

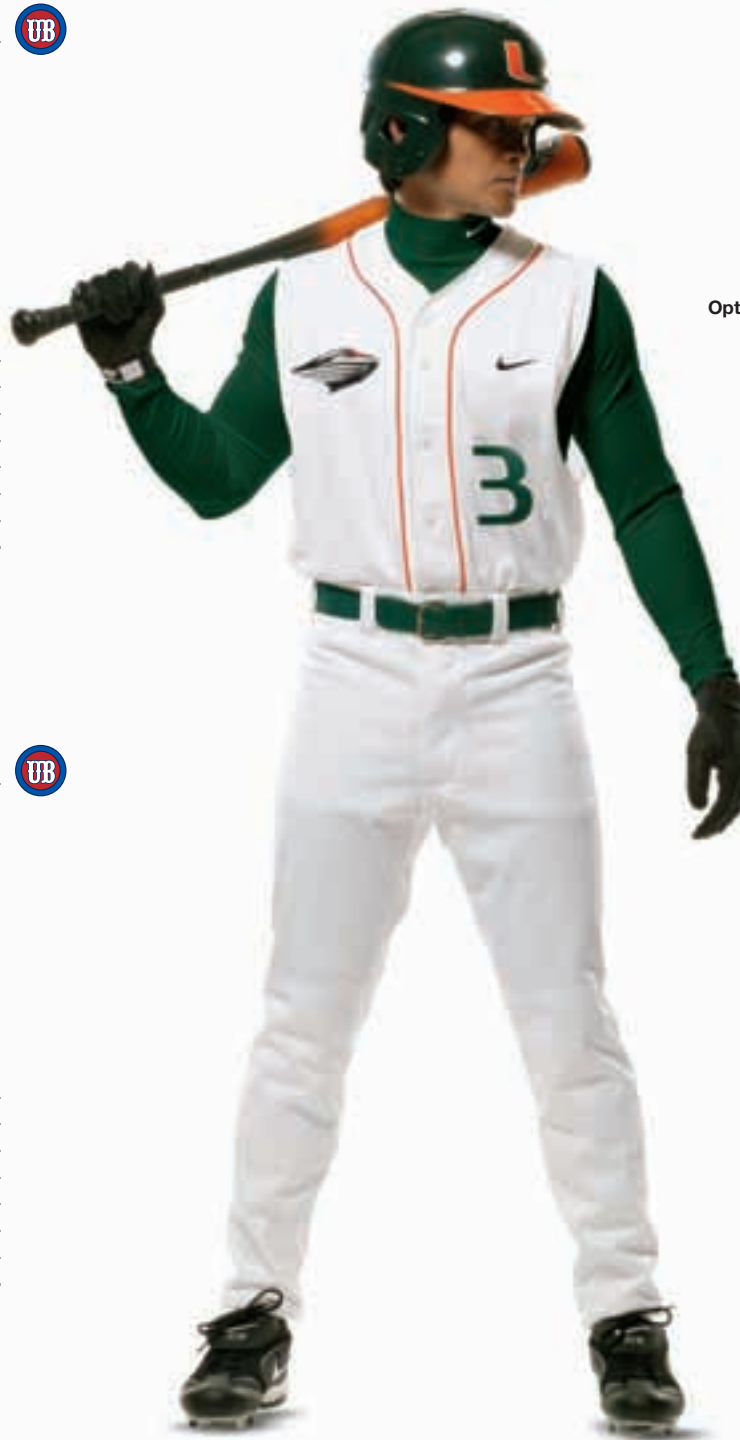
Full-button front vest with cover-stitched seams.

VEST OPTIONS:

- Solid colors or pinstripes
- 1/8" button front piping
- 1/2" button front braid (placed like piping)
- 1/8" armhole piping set 1/2" up
- 1/2" armhole braid set 1/2" up
- Name plaques
- +2" or +4" extra length
- *Pictured with optional piping*

NKGM01639	Solid colors - Poly warp knit
NWVT03123	White with pinstripes
NWVT03122	Grey with pinstripes
NWVT03117	Solid colors - Medium-weight nylon stretch fit
NWVT03119	White with pinstripes - Medium-weight nylon stretch fit
NWVT03118	Grey with pinstripes - Medium-weight nylon stretch fit
NWVT04449	Nylon pro mesh

CUSTOM



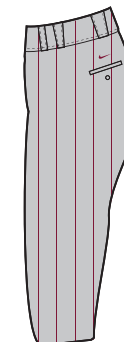
Option: 1/8" button front piping



Option: 1/2" braid



Option: 1/8" piping



Option: 1/2" braid

ELITE TAPERED PANT

SIZES: S, M, L, XL, 2XL
 *25% upcharge for 3XL

Tapered legs, non-roll elastic waistband with belt loops, two-ply knees, two back set in pockets, left side with button closure and cover-stitched seams.

PANT OPTIONS:

- Solid colors or pinstripes
- 1/8" side piping (not available on pinstripe)
- 1/2" side braid
- 1" side braid
- 1 1/2" side braid
- Braves-style belt loop braid
- +2", +4" or +6" extra length (extra length limitations on stretch nylon pinstripe)

NPKN01646	Solid colors - Poly warp knit
NPKN03113	White with pinstripes
NPKN03112	Grey with pinstripes
NPKN03107	Solid colors - Medium-weight nylon stretch fit
NPKN03156	White with pinstripes - Medium-weight nylon stretch fit
NPKN03155	Grey with pinstripes - Medium-weight nylon stretch fit
NPKN03105	Heavyweight nylon stretch fit

CUSTOM



WALK-OFF JERSEY



SIZES: S, M, L, XL, 2XL
*25% upcharge for 3XL

Full-button front jersey with cover-stitched seams. Solid colors, raglan sleeves. Porthole mesh underarm vents provide exceptional ventilation.

JERSEY OPTIONS:

- 1/8" button front piping
- 1/2" button front braid (placed like piping)
- 1/8" piping set-up 1/2" or 1" from sleeve end
- 1" sleeve end trim
- 1/2" sleeve end braid set up 1/2" or 1" from sleeve end
- Name plaques
- +2" or +4" extra length
- *Pictured with 1/2" braid option*

12249X Porthole mesh - Poly warp knit

12250X Porthole mesh - Nylon stretch fit

12326X Micro mesh - Nylon stretch fit

12327X Micro mesh - Poly warp knit

CUSTOM



BASEBALL/FAST PITCH CUSTOM OPTIONS



COLORS AND FABRICS

FABRICS	White	Black	Navy	Purple	Royal	Light Blue	Silver	Dark Green	Kelly Green	Dark Maroon	Cardinal	Scarlet	Orange	Bright Gold	Vegas Gold	Pewter	Blue Grey	Pinkfire II
100% stretch fit nylon - Medium/Heavy	○	●	●	●	●	●	●	●	●	●	●	●	●	●	●	●		
100% stretch fit nylon - Heavy	○	●	●	●	●	●	●	●	●	●	●	●	●	●	●	●		
100% stretch fit nylon white w/ pinstripes - Medium	○	●	●	●	●	●	●	●	●	●	●	●	●	●	●	●		
100% stretch fit nylon grey w/ pinstripes - Medium	○	●	●	●	●	●	●	●	●	●	●	●	●	●	●	●		
100% polyester warp knit (top weight)	○	●	●	●	●	●	●	●	●	●	●	●	●	●	●	●	●	
100% polyester warp knit (bottom weight)	○	●	●								●						●	
100% nylon pro mesh	○	●	●	●	●	●	●	●	●	●	●	●	●	●	●	●	●	
100% nylon Dri-FIT Flat-back mesh	○	●	●	●	●	●	●	●	●	●	●	●	●	●	●	●	●	●
Shimmersheen	○	●	●	●	●	●	●	●	●	●	●	●	●	●	●	●	●	●
Pro-Brite mesh	○	●	●	●	●	●	●	●	●	●	●	●	●	●	●	●	●	●

MEN'S CUSTOM UNIFORM SIZING FOR CARRY OVER STYLES*

*For new styles please refer to sizing chart in information section of the catalog.

SIZE	CHEST	WAIST	INSEAM
Small	34-36	26-28	27
Medium	38-40	30-32	29
Large	42-44	34-36	29
XL	46-48	38-40	29
2XL	50-52	42-44	29

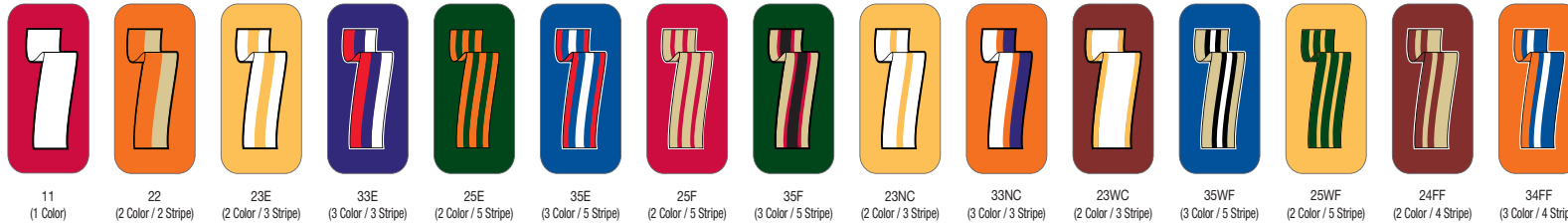
WOMEN'S CUSTOM UNIFORM SIZING FOR CARRY OVER STYLES*

*For new styles please refer to sizing chart in information section of the catalog.

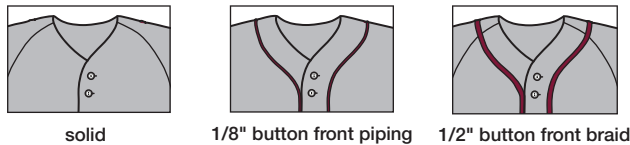
SIZE	BUST	WAIST	INSEAM
Small	32	24	22
Medium	34-36	26-28	22-23
Large	38-40	30-32	23
XL	42-44	34-36	23-25
2XL	46-48	38-40	25
3XL	50-52	42-44	25

TRIM OPTIONS

NECK/CUFF/PANT TRIM OPTIONS* *1/8" braid piping available in solid colors. *1/2" braid available on 11, 22, 23E and 33E patterns only.



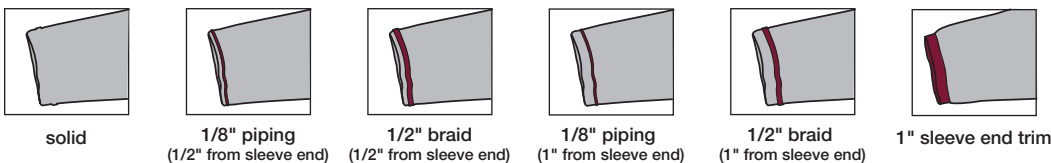
FULL BUTTON JERSEY OR VEST FRONT TRIM OPTIONS



BASEBALL PANT TRIM OPTIONS



FULL BUTTON JERSEY SLEEVE TRIM OPTIONS



FONTS

- Tackle twill and print
- Script lettering - 5" caps with 3" lower case / 4" caps with 2"
- Name plates and names are offered depending on style

Wildcats

SCRIPT 1

(1 or 2 color print or tackle twill,
1 color tail \$6, 2 color tail \$10)

ARIZONA

PADRES STYLE

(2 color print or tackle twill)

PLAIN BLOCK (1 or 2 color print or tackle twill - 3"/4")

ABCDEFGHIJKLMNOPQRSTUVWXYZ

FULL BLOCK (1 or 2 color print or tackle twill - 3"/4")

ABCDEFGHIJKLMNOPQRSTUVWXYZ

ATHLETIC SHADOW (2 color print or tackle twill - 3"/4")

ABCDEFGHIJKLMNOPQRSTUVWXYZ

GOTHIC BLOCK (1 or 2 color print or tackle twill - 3"/4")

ABCDEFGHIJKLMNOPQRSTUVWXYZ

ATHLETIC GOTHIC SHADOW (1 or 2 color print or tackle twill - 3"/4")

ABCDEFGHIJKLMNOPQRSTUVWXYZ

KANSAS BLOCK (1 or 2 color print or tackle twill - 3"/4")

ABCDEFGHIJKLMNOPQRSTUVWXYZ

CAXTON ROMAN BOOK (1 or 2 color print or tackle twill - 3"/4")

ABCDEFGHIJKLMNOPQRSTUVWXYZ

SYRACUSE BLOCK (1 or 2 color print or tackle twill - 3"/4")

ABCDEFGHIJKLMNOPQRSTUVWXYZ

TRUE BLOCK - 1 or 2 color tackle twill)

ABCDEFGHIJKLMNOPQRSTUVWXYZ

MIAMI - 1 or 2 color tackle twill)

ABCDEFGHIJKLMNOPQRSTUVWXYZ

ATHLETIC GOTHIC SHADOW (2 color print or tackle twill - 4"/6"/8")

1234567890

ATHLETIC SHADOW (2 color only print or tackle twill - 4"/5"/6"/8"/10"/12")

1234567890

KANSAS BLOCK (1 or 2 color print or tackle twill - 4"/6"/8")

1234567890

SYRACUSE BLOCK (tackle twill - 3"/4"/6"/8")

1234567890

GOTHIC (1 or 2 color print - 4"/6"/8"/10"/12", tackle twill only - 4"/6"/8"/10")

1234567890

FULL BLOCK (1 or 2 color print or tackle twill - 8"/10"/12")

1234567890

CAXTON ROMAN BOOK (1 or 2 color print or tackle twill - 4"/5"/6"/8")

1234567890

TRUE BLOCK - 1 or 2 color tackle twill)

0123456789

MIAMI - 1 or 2 color tackle twill)

0123456789



414985 | MAX DIAMOND ELITE FLY \$100.00

SIZES: 8-14, 15, 16 OFFER DATE: 10/1

A new era begins with an emphasis on moving the feet quicker. Max Air unit designed to be lighter and more comfortable on the diamond.

UPPER: Lightweight and durable leather with supportive synthetic overlays.

MIDSOLE: Full-length Phylon with large-volume heel Max Air unit for maximum comfort.

OUTSOLE: Power channel flex grooves allow for better traction through driving process allows better contact of all 9 spikes.

011 Black/White-White (Flywire)	012 Black/White-White
101 White/Black	411 Pro Blue/White
611 Pro Red/White	



375764 | NIKE SHOX FUSE 2 \$105.00

SIZES: 4-14, 15, 16 OFFER DATE: 10/1

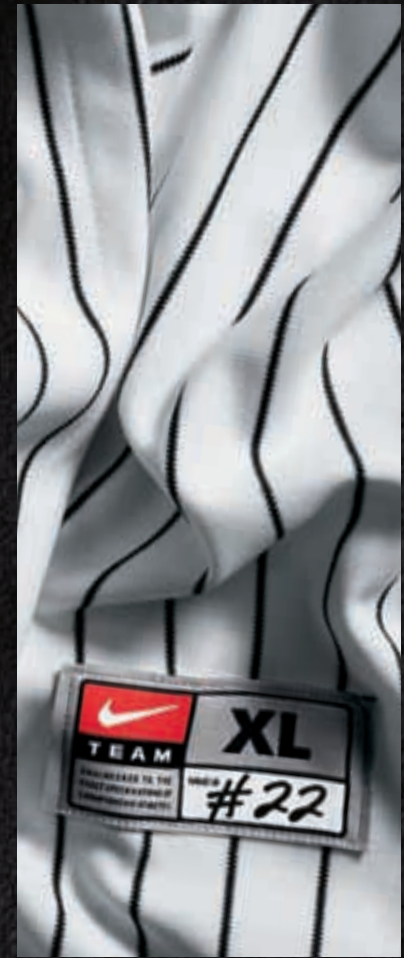
A new era begins with an emphasis on moving the feet quicker. Comfort from Shox technology and power from the V9 outsole.

UPPER: Integrated synthetic leather, mesh and hf welded TPU for durability, breathability and comfort.

MIDSOLE: Full-length Phylon midsole with TPU Nike Shox top plate incorporated for arch support and maximum comfort.

OUTSOLE: New V9 outsole with enhanced first step power release technology.

006 Black/Black-Metallic Silver	012 Black/White-Metallic Silver
015 Black/White-Game Orange	131 White/Deep Forest
411 Pro Blue/White-Reflective Silver	611 Pro Red/White-Reflective Silver



**MEN'S
BASEBALL**

Footwear
Equipment



330060 | AIR ZOOM COOP V \$90.00

SIZES: 4-14, 15, 16 OFFER DATE: 10/1

For the serious athlete looking for comfort, ankle control and elite level performance.

UPPER: The finest in synthetic materials blended with mesh for breathability.

MIDSOLE: Full-length Phylon midsole with Nike Zoom unit for best ride.

OUTSOLE: Nine-cleat traction with shorter supplemental cleats for increased lateral movements.

011 Black/White	081 Black/Game Orange
131 White/Deep Forest	411 Pro Blue/White
611 Pro Red/White	

NEW zoom



333778 | AIR ZOOM COOP V MCS \$85.00

SIZES: 4-14, 15, 16 OFFER DATE: 10/1

For the serious athlete looking for comfort, ankle control and elite level performance.

UPPER: The finest in synthetic materials blended with mesh for breathability.

MIDSOLE: Full-length Phylon midsole with Nike Zoom unit for best ride.

OUTSOLE: V9 outsole with enhanced first step power released technology.

011 Black/White

NEW zoom

375562 | AIR HUARACHE LWP90 \$90.00

SIZES: 8-14, 15, 16 OFFER DATE: C/O

A new era begins with an emphasis on moving the feet quicker. Comfort from Air-Sole unit technology and power from the V9 outsole.

UPPER: Premium synthetic leathers combine with an ankle strap for form fit and ankle support. TPU external heel counter for a better heel shape and fit.

MIDSOLE: New full-length Phylon midsole with encapsulated Air-Sole unit for comfort and response.

OUTSOLE: New V9 outsole with enhanced first step power release technology.

004 Medium Grey/Black	011 Black/White
014 Black/White-Game Orange	101 White/Black
131 White/Deep Forest	411 Pro Blue/White
611 Pro Red/White	





414986 | AIR SHOW ELITE 2 \$80.00

SIZES: 4-14, 15, 16 OFFER DATE: 10/1

A versatile, low-cut cleat. Blends classic baseball DNA with modern design and detail for elite-level performance and style.

UPPER: Premium synthetic leather upper with integrated dynamic fit sleeve provide lightweight, crafted fit. Some color-way with interchangeable-color Swoosh.

MIDSOLE: Full-length midsole with heel Air-Sole unit for a smooth, fast ride. Framelite, medial toe guard for enhanced durability.

OUTSOLE: 9-cleat traction with shorter supplemental for increased lateral movement.

011 Black/White	041 Black/Sport Royal
061 Black/Game Red	101 White/Black

Available in Wide: 416348-011 Black/White



414821 | AIR ELITE PREGAME \$75.00

SIZES: 8-15, 16, 17, 18, 19 OFFER DATE: 10/1

The ultimate baseball trainer for pre-game, post game and everything in between.

UPPER: Lightweight synthetic leather and mesh upper provides great performance fit and excellent breathability.

MIDSOLE: Phylon midsole with full-length encapsulated Air-Sole unit and heel crash pad provide a cushioned ride. Injected shank for midfoot strength arch support.

OUTSOLE: Solid rubber outsole with hybrid traction pattern and lateral outrigger for traction and lateral stability. Toe bumper provides durability toe-drag.

011 Black/White	101 White/Black
401 Deep Royal/Metallic Silver-White	601 Pro Red/Metallic Silver-White



333785 | AIR DIAMOND TRAINER \$60.00

SIZES: 4-14, 15, 16 OFFER DATE: C/O

A classic baseball trainer designed for the needs of today's athlete.

UPPER: Lightweight synthetic leather combination with removable tongue flap.

MIDSOLE: Full-length Phylon midsole with Air-Sole unit in heel.

OUTSOLE: Rubber outsole combines our nubby bottom outsole with cross-training traction to meet the on-field needs of MLB players.

012 Black/White-Metallic Silver	103 White/Metallic Silver-Black
411 Pro Blue/White-Metallic Silver	611 Pro Red/White-Metallic Silver





414990 | NIKE SLASHER \$60.00

SIZES: 6-14, 15, 16 OFFER DATE: C/O

A low-cut speed shoe with the energy of a pro-level product.

UPPER: Lightweight and synthetic overlays provide a dynamic fit.

MIDSOLE: Phylon midsole wedge with EVA foam liner for comfort.

OUTSOLE: Five-spoke Nike speed plate with supplemental cleats providing extra traction in change of directions movements.

011 Black/White-Metallic Silver



375559 | KEYSTONE 3/4 \$45.00

SIZES: 6.5-13 OFFER DATE: C/O

A supportive 3/4-height versatile baseball/softball shoe for all turf conditions.

UPPER: Lightweight and durable synthetic leather.

MIDSOLE: Newly designed, sculpted full-length Phylon midsole.

OUTSOLE: 3-color solid rubber outsole. Bi-level cleats.

011 Black/White



375560 | KEYSTONE LOW \$40.00

SIZES: 6.5-13 OFFER DATE: C/O

A supportive low-cut versatile baseball/softball shoe for all turf conditions.

UPPER: Lightweight and durable synthetic leather.

MIDSOLE: Newly designed, sculpted full-length Phylon midsole.

OUTSOLE: 3-color solid rubber outsole. Bi-level cleats.

011 Black/White



375767 | KEYSTONE 3/4 (BG) \$35.00

SIZES: 1y-6y OFFER DATE: C/O

A supportive 3/4-height versatile baseball/softball shoe for all turf conditions.

UPPER: Lightweight and durable synthetic leather.

MIDSOLE: Newly designed, sculpted full-length Phylon midsole.

OUTSOLE: 3-color solid rubber outsole. Bi-level cleats.

011 Black/White



375561 | KEYSTONE LOW (BG) \$30.00

SIZES: 1y-6y OFFER DATE: C/O

A supportive low-cut versatile baseball/softball shoe for all turf conditions.

UPPER: Lightweight and durable synthetic leather.

MIDSOLE: Newly designed, sculpted full-length Phylon midsole.

OUTSOLE: 3-color solid rubber outsole. Bi-level cleats.

011 Black/White



BF1364 | DIAMOND ELITE SHOW 1150 \$110.00

SIZES: REGULAR **OFFER DATE:** 10/1

New Premier Diamond Elite Leather has quick break in and form that lasts

- Full-grain leather palm lining offers exceptional feel and durability
- Leather reinforced palm provides additional structure
- Rolled leather welting improves structure and helps maintain shape
- Full-grain leather lacing for strength and durability
- Modified T web is light, flexible and reinforced to add strength and shape to pocket
- 11 1/2" infield and pitchers' pattern with shallow pocket for easy ball transfer
- Thumb and pinky loops enhance closure for better glove control

021 Black/Bone/(White)



BF1365 | DIAMOND ELITE SHOW 1200 \$110.00

SIZES: REGULAR **OFFER DATE:** 10/1

New Premier Diamond Elite Leather has quick break in and form that lasts

- Full-grain leather palm lining offers exceptional feel and durability
- Leather reinforced palm provides additional structure
- Rolled leather welting improves structure and helps maintain shape
- Full-grain leather lacing for strength and durability
- Basket web is strong, durable and versatile
- 12" infield and pitchers' pattern with deep, bowl-shaped pocket for better ball control
- Thumb and pinky loops enhance closure for better glove control

002 Black/Black/(Bone)



BT0596 | AERO FUSE CX2 -3 \$400.00

SIZES: 31/28, 32/29, 33/30, 34/31 **OFFER DATE:** 10/1

2-piece, ultra-high performance adult baseball bat

- Multi-Wall Cross-React Carbon Composite creates an explosive bat/ball collision
- Power Belt Technology maximizes the size of the sweet spot
- Speedlink System composite handle with alloy barrel is balanced for bat speed, engineered to flex for quicker acceleration, and tuned for reduced vibration and solid feel at contact
- Patented Aero-Cap is 3% more aerodynamic than traditional cupped-end bats for increased bat speed and additional power
- Durable automotive clearcoat
- -3 length-to-weight ratio, 2 5/8" barrel, meets all standards for college and high school play (BESR certified)
- Cushioned synthetic-leather grip offers exceptional feel and durability

471 Varsity Blue/Yellow/(White)



BT0601 | AERO FUSE BESR -3 \$300.00

SIZES: 32/29, 33/30, 34/31 **OFFER DATE:** 10/1

2-piece, ultra-high performance adult baseball bat

- Speedlink System composite handle with alloy barrel is balanced for bat speed, engineered to flex for quicker acceleration, and tuned for reduced vibration and solid feel at contact
- Patented Aero-Cap is 3% more aerodynamic than traditional cupped-end bats for increased bat speed and additional power
- MeC 35 Max Energy Collision alloy engineered to produce the most explosive bat/ball collision possible
- Precision Barrel Structure optimizes responsiveness of hitting area
- Shot-peen textured finish for durable performance
- -3 length-to-weight ratio, 2 5/8" barrel, meets all standards for college and high school play (BESR certified)
- Cushioned synthetic-leather grip offers exceptional feel and durability

681 Varsity Red/Orange/(White)



BT0578 | AERO TORQUE BESR -3 \$250.00

SIZES: 31/28, 32/29, 33/30, 34/31 **OFFER DATE:** 10/1

Advanced, high-performance adult baseball bat

- Precision Barrel Structure optimizes responsiveness of hitting area
- MeC 30 Max Energy Collision alloy engineered to produce an explosive bat/ball collision
- Painted finish with durable automotive clearcoat
- -3 length-to-weight ratio, 2 5/8" barrel, meets all standards for college and high school play (BESR certified)
- Extended barrel profile expands hitting area and sweet spot
- Cushioned synthetic-leather grip offers exceptional feel and durability

061 Black/Red/(White)



GB0281 | JORDAN TEAM BATTING GLOVES \$60.00

SIZES: S, M, L, XL **OFFER DATE:** 10/1
 Premier batting gloves • Ventilated mesh and flexible spandex on back-of-hand • Perforated fingers allow ventilation and quicker drying • Pre-curved fingers match shape of hand • One-piece seamless Cabretta leather palm • Mesh-wrapped adjustable wrist strap for comfort • Worn by Jeter

101 White/Black/(Chrome)	102 White/Red/(Chrome)
103 White/Navy/(Chrome)	104 White/Royal/(Chrome)

GB0308 | VAPOR ELITE \$45.00

SIZES: S, M, L, XL **OFFER DATE:** 10/1
 Revolutionary fit engineering brings an all-new completely pre-curved design, for a perfect fit wrapped around the bat • Ultra-thin textured synthetic palm is highly durable, for an unprecedented close connection and a nearly bare-hand feel • Innovative Flywire wraparound wrist strap brings a close-fitting secure lock-down to the entire glove • Lightweight, low-profile design for at-bat protection with complete connectio

001 Black/White	117 White/Black (<i>not shown</i>)
407 Royal/Black	601 Red/Black (<i>not shown</i>)

GB0305 | DIAMOND ELITE PRO \$40.00

SIZES: S, M, L, XL **OFFER DATE:** 10/1
 Advanced performance batting glove • Seamless Spyder-Tex cabretta leather from Pittards offers superior grip and feel • The leather wraps up and around the side of the pinky, thumb and index finger, moving seams away for a clean connection • Stretch gusset over the thumb lets the hand fully wrap around the bat comfortably • Pre-curved fingers match shape of hand • Wide, secure spandex wrist strap • NikeFIT dry moisture-wicking fabric on back-of-hand and between fingers helps keep you dry and comfortable

001 Black/White	004 Black/Grey
005 Black/Green	006 Black/Purple
008 Black/Orange	041 Black/Royal
075 Black/Red	100 White/Black
103 White/Red	104 White/Royal
105 White/Navy	107 White/Purple
108 White/Green	150 White/Grey
160 White/Maroon	



BA2725 FUSE ROLLER BAG \$100.00

SIZES: MISC OFFER DATE: 10/1

Ultimate wheeled locker bag with dugout organizer flap • Wide mouth padded four-bat sleeve, huge main compartment for helmet, catcher's gear and tournament essentials • Fence hooks, dugout flap, two mesh pouches, shoe compartment, insulated water-bottle holder • Durable urethane wheels and nylon pull-strap make it easy to carry heavy loads • 1200D polyester with coated water and scuff-resistant bottom, rugged extra-large zippers on main compartment

DIMENSIONS: 36"L x 14"W x 14"H

058 Black/Black/(Metallic Silver)



BS0110 TEAM ROLLER \$70.00

SIZES: MISC OFFER DATE: 10/1

Extra-Large capacity / Wide-mouth padded four-bat sleeve, huge main compartment for helmets, catcher's gear, and tournament essentials • Easy transport / Durable urethane wheels, multiple straps, haul handle for hanging, loading and unloading • Dugout durability / 600D polyester with coated water and scuff-resistant bottom, rugged extra-large zippers

DIMENSIONS: 35"L x 12"W x 12"H / 4090 cu. in.

001 Black/Black/(Silver)



BS0107 BASEBALL BACKPACK \$60.00

SIZES: MISC OFFER DATE: 10/1

Air straps for comfort • Dual bat sleeves • Separate shoe compartment • Sealed batting glove pocket • Fielding glove pouch • Easy-access pocket for the little things

DIMENSIONS: 19"H x 14"W x 10"D / 2320 cu. in.

001 Black/Black/(Silver)



BS0122 VAPOR BAT BAG \$40.00

SIZES: MISC OFFER DATE: 10/1

Backpack-style carry system with padded back panel balances loads evenly and features adjustable padded straps for comfort • Padded three-bat sleeve, fence hook, dugout organizer flap, mesh locker pouch, shoe compartment • Main Compartment holds a helmet, fielding glove and other equipment • 600 D polyester with coated water and scuff-resistant bottom, rugged extra large zippers

682 Red/Black

058 Black/Silver

463 Royal/Black



BS0121 DIAMOND ELITE SHOW BAT BAG \$30.00

SIZES: MISC OFFER DATE: 10/1

Durable bat bag with fence clip and valuables pocket • Padded three-bat sleeve, fence hook, dugout organizer flap, mesh locker pouch, shoe compartment • Padded shoulder strap and handles • 600 D polyester and nylon construction, rugged large zippers, wide nylon webbing, dual loop

DIMENSIONS: 36"L x 8"W x 9"H

058 Black/Black/(Metallic Silver)

463 Varsity Royal/Black/(Metallic Silver)

682 Varsity Red/Black/(Metallic Silver)